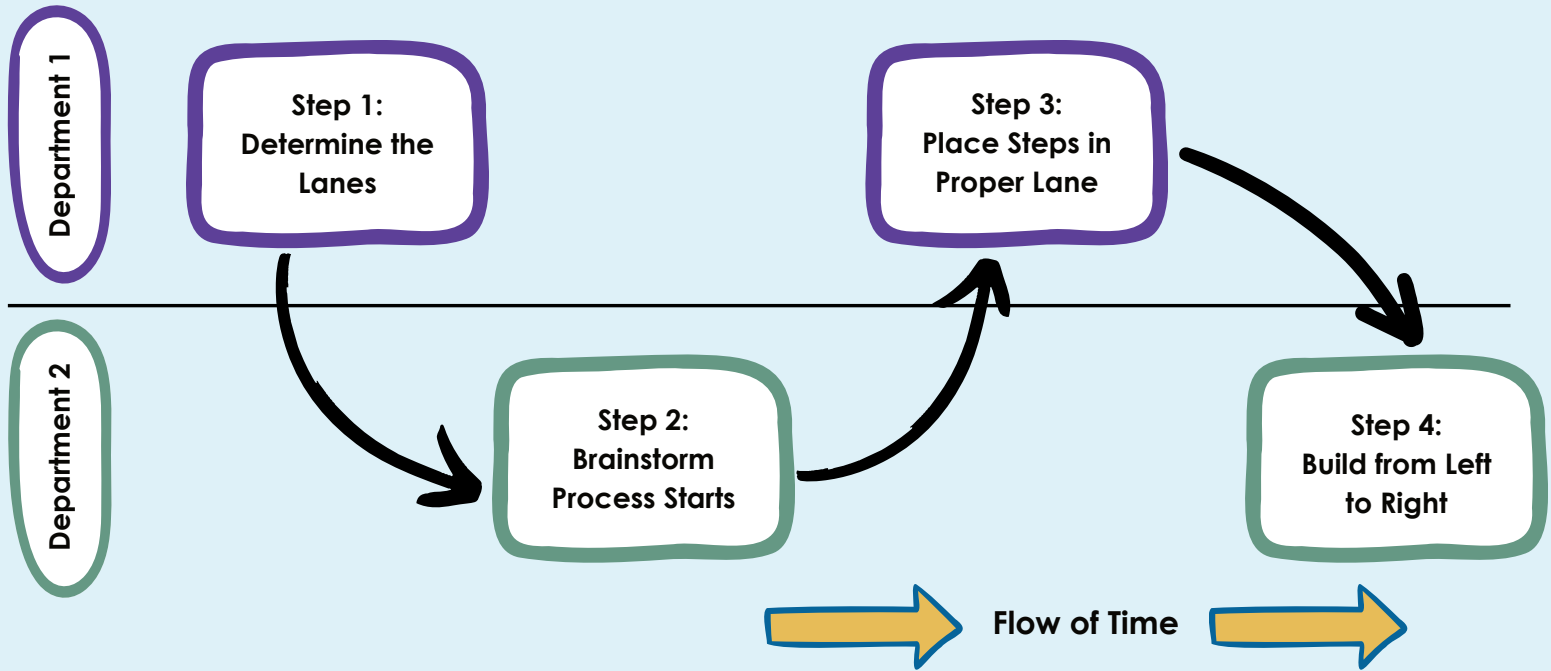




Process Maps

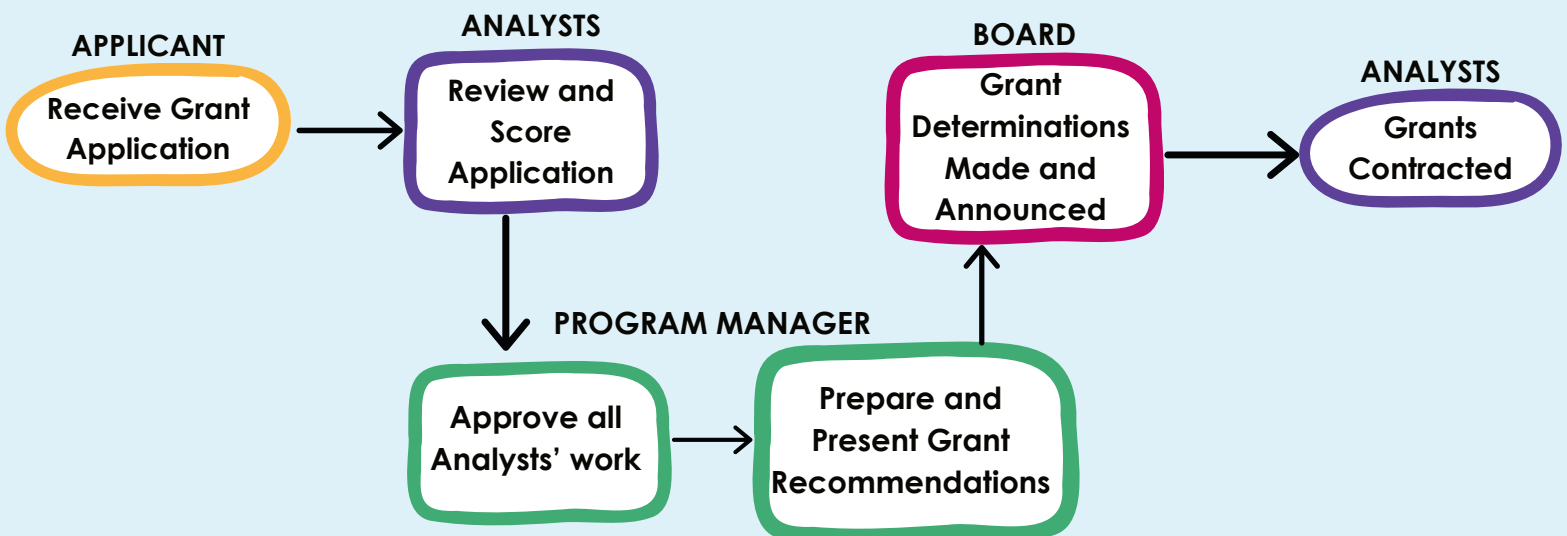
Swimlane Process Map

The Swimlane Map displays the process in separate rows based on the group performing the step.



High Level Process Map

The High Level Map displays a 30,000 ft view of a process without getting into the details of how the work is done.

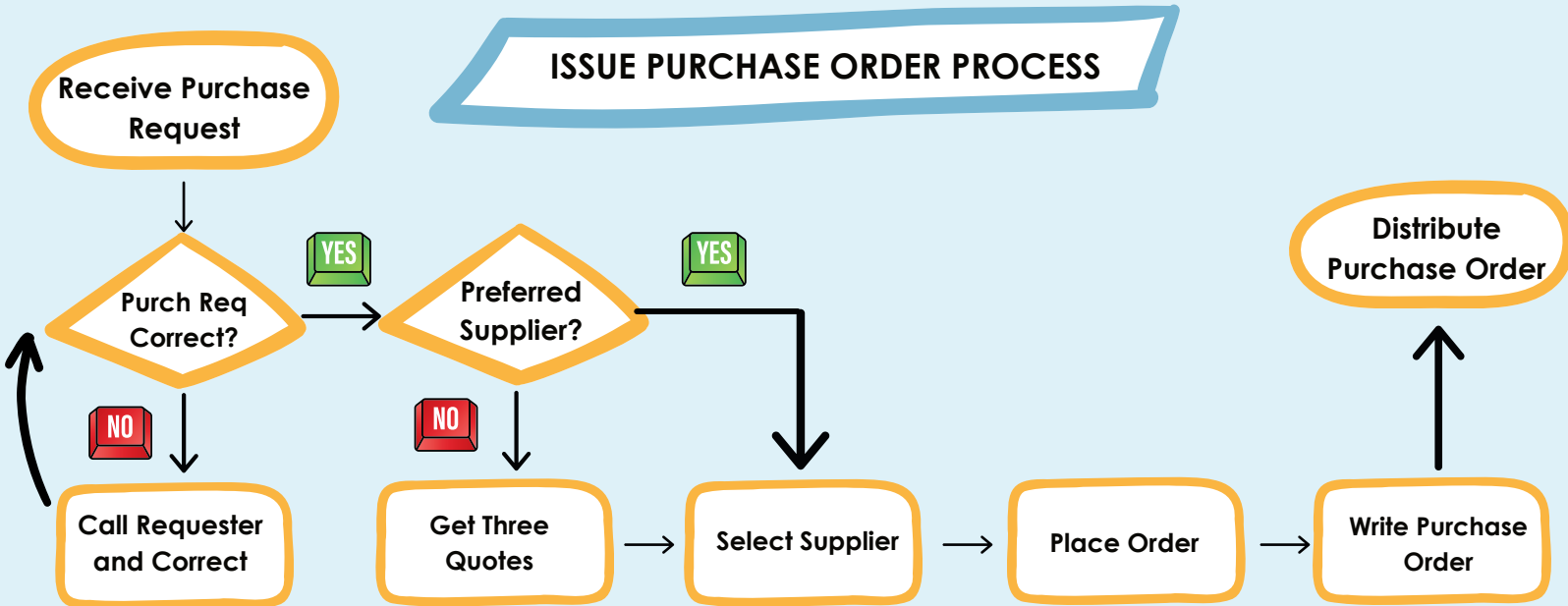




Process Maps

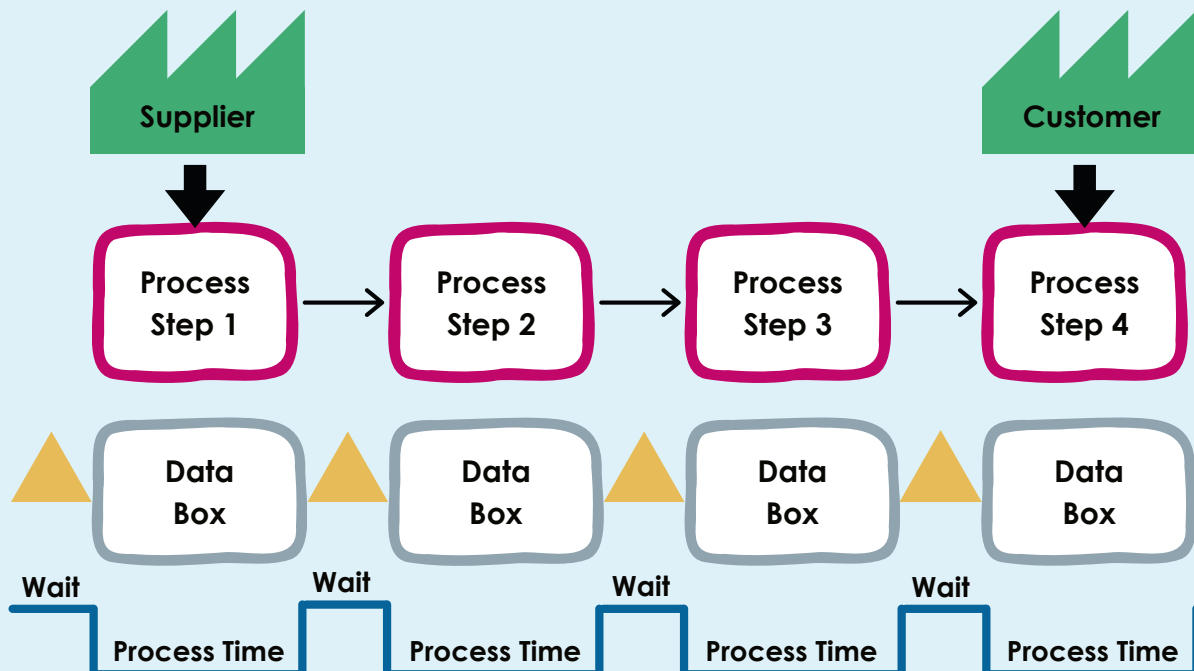
Detailed Process Map

A Detailed Process Map shows every single step taken within a process.



Value Stream Map

A Value Stream Map displays the high level process steps along with key process data.





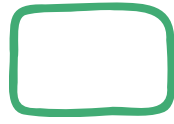
Process Map Symbol Key

Basic Symbols



TERMINATOR

Shows process Start and End Point. There may be multiple in as single process.



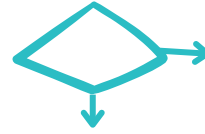
PROCESS STEP

Describes the actual work occurring with each block representing one task



FLOW LINE

Connects any two steps and shows the direction of the process



DECISION

A choice is required to proceed with choices labeled on Flow Lines. Can be as simple as "Yes" or "No"



DOCUMENT

Represents supportive document required or produced for others

Intermediate Symbols



DATABASE

Indicates information with standard structure allowing for searching and sorting



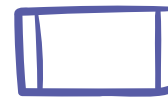
INPUT/OUTPUT

Used when material/information enters or leaves the system



MULTIPLE DOCUMENTS

Used when multiple documents are required



SUBPROCESS

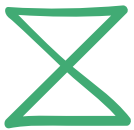
Indicates a predefined process such as a subroutine or a module



STORAGE

Used when something goes into storage includes description of what is stored and how long

Advanced Symbols



COLLATE

Indicates a step that organizes data into a standard format



CONTROL

A process that must be measured and compared to specifications



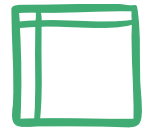
DELAY

Identifies when the process comes to a temporary halt and what has to happen before the process resumes



DISPLAY

Data that is displayed for people to read



INTERNAL STORAGE

Indicates an internal storage device



MANUAL INPUT

Data that is entered by hand - such as with a keyboard or barcode reader



MANUAL OPERATION

Any operation performed by a person



PREPARATION

Initial setup and other preparation steps before start of process flow



SORT

A step that organizes a list of items into a sequence or sets based on some pre-determined criteria



STORED DATA

Indicates any type of stored data



SIPOC Diagram Basic Template

