


State and U.S. Territories CSBG Offices





Audience Question:

What is the one element of
CSBG supported programs and
services that is impossible to
duplicate?

State Perspectives

- During the past nine months, each level of the network has experienced unique challenges.
- How we manage today will determine our outcome and success.
- We can establish a new standard.

Questions to Ponder....

What do you wish you had known when this all started?

Are you documenting this experience?

Lessons Learned?

Best Practices?



Common Linkages in Response to COVID-19

Public Health Departments

- Contact Tracing, Testing, Supports, PPE

Emergency Management Departments and Services

- First Responders, PPE, Emergency Response Coordination

Nutrition Services/Programs

- Food Banks, Meals on Wheels, Out of School Nutrition Programs

Housing Services/Programs

- Federal Programs (ESG, HOME, other HUD Programs)

State or Local Funded Emergency Financial Assistance



Innovation of Services and Programs

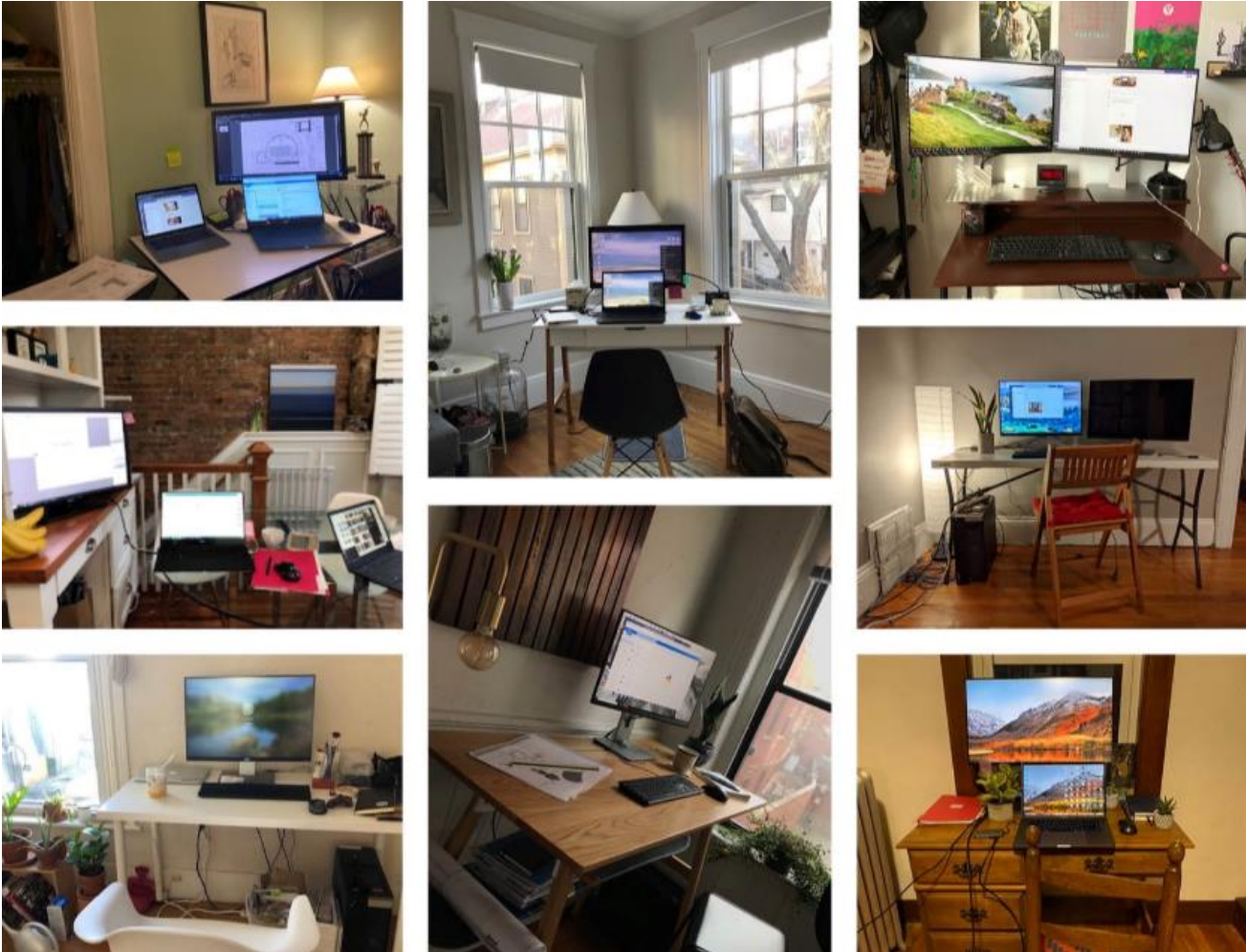


CSBG Services and Programs

- Collaborate and Coordinate – CSBG is not a Competition!
- In this current environment, duplication is likely to happen
- Providing the same service is not necessarily duplication
(Once you have seen one CAA, you have seen one CAA!)
- Look beyond the “geography” to eliminate barriers for client services



Linkages Across State Office Programs



- Create linkages within the state office
- Work with other programs (LIHEAP, Weatherization) on contract language templates, policies, etc.
- Linkages with agencies, associations, national partners and funders are important.



We may not be able to connect physically, but we are still together.

Take care of yourself while you care for others.

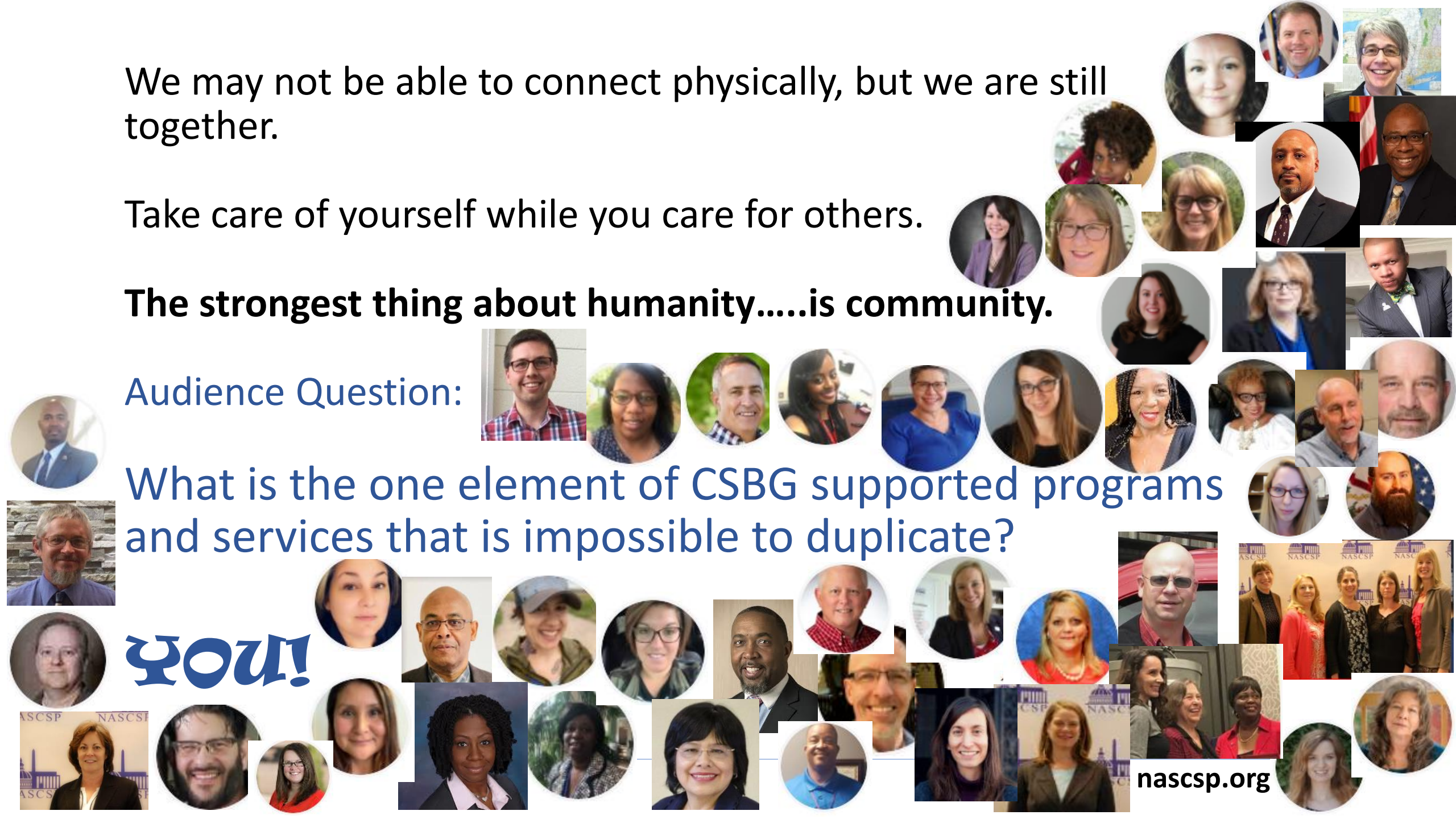
The strongest thing about humanity....is community.

Audience Question:

What is the one element of CSBG supported programs and services that is impossible to duplicate?

You!

nascsp.org





Jaimi Clifford, CSBG State Coordinator
Maine Department of Health and
Human Services

Jaimi.Clifford@maine.gov

Clint Cottam, Executive Director
Community Action Partnership of Utah

clint@caputah.org

Karen Dunn, CSBG Program Manager
Washington State Department of
Commerce

karen.dunn@commerce.wa.gov

Megan Hannan, Executive Director
Maine Community Action Partnership

mhannan@mecap.org

Sahil Oberoi, Director of Case
Management & Housing

Utah Community Action

sahil.oberoi@utahca.org

Karen Quackenbush, CSBG Program
Specialist

Utah Department of Workforce Services

kquackenbush@utah.gov