



WWB fights energy inefficiency and energy poverty, improving the health, safety, comfort and economy of families across the globe.

- Based on the successful 38 years of history of the Weatherization Assistance Program (WAP) in the US.
- Over 8.4 million homes weatherized by WAP in the US.
- More: health and safety, green collar jobs, green industries, building science, technologies and materials, and energy for all.
- Less: energy poverty, non renewable fuels dependence, CO2 emissions, shutoffs and blackouts.



WWB was formed as an international weatherization services non profit corporation, based in the U.S., working with the mission of:

- Expanding public awareness and support for weatherization programs globally.
- Improving the health, safety, durability and energy efficiency of low income homes and building environments in different countries.
- Developing strategic partnerships in order to support weatherization programs globally.
- Increasing the capacity of our partners, ourselves and our clients, through outreach, training and consulting.
- Uniting energy professionals worldwide, to globally expand the knowledge and science of weatherization to all nations.
- Becoming a research and planning resource, for both private and public foundations and governmental entities in the field of energy efficiency, health, and safety in residential housing.



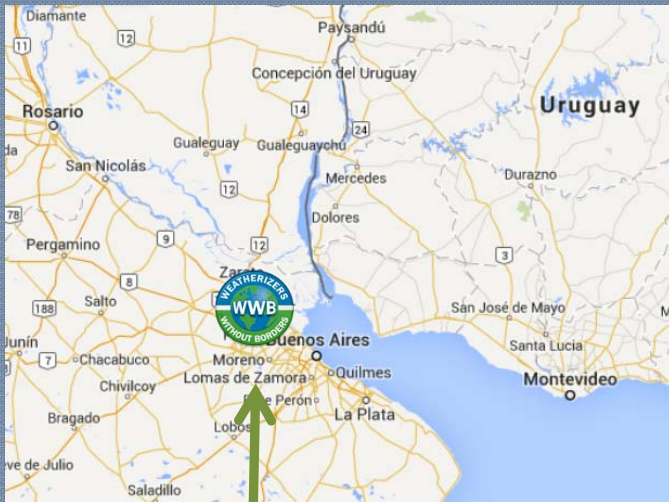
WEATHERIZATION AS A PUBLIC POLICY MODEL IN BUENOS AIRES



Buenos Aires, ARGENTINA



WEATHERIZERS WITHOUT BORDERS - WWB



WEATHERIZATION **Campana, Buenos Aires**

- ✓ Capacity building
- ✓ Partnerships building
- ✓ Sample of 150 houses audited in the Municipality of Campana, Buenos Aires
- ✓ Sample of 100 houses weatherized
- ✓ Social and technical evaluation before and after weatherization
- ✓ Impact evaluation on: energy use, health&safety, comfort&quality of life, environment, jobs creation, and benefits for the community
- ✓ Dissemination and replication of Weatherization





Capacity Building and Partnerships to develop a public policy model: from the international to the local level.

WWB PARTNERS



WEATHERIZERS WITHOUT BORDERS – WWB

Mr. Robert Adams, WAP National Manager at DOE, in Buenos Aires. June 2013

Meetings with officials at: Secretaría de Energía de la Nación, Secretaría de Energía de Santa Fe, Ministerio de Planificación de la Nación, Ministerio de Gobierno de la Provincia de Buenos Aires, Municipalidad de Campana, Municipalidad de Zárate, AmCham, Universities and NGOs.



Public Conference at ITBA



WEATHERIZATION EXPERTS FROM THE US TO BA.

NOV 2013

**WEATHERIZERS
WITHOUT BORDERS – WWB**



Capacity Building:

WEATHERIZATION EXPERTS FROM THE US TO BA

**WEATHERIZERS
WITHOUT BORDERS – WWB**



Capacity Building:

WEATHERIZATION EXPERTS FROM THE US TO BA

**WEATHERIZERS
WITHOUT BORDERS – WWB**



Capacity Building:
**ARGENTINE WEATHERIZERS TRAINED IN THE
US. JAN 2014**

**WEATHERIZERS
WITHOUT BORDERS – WWB**



WEATHERIZERS WITHOUT BORDERS – WWB

Secretaría de Desarrollo Humano

Cooperativistas se capacitaron en el marco del Proyecto "Sustentabilizar Hogares para el Ahorro de Energía"

Nota en pág. 2



PARTE DEL GRUPO QUE PARTICIPA DEL PROYECTO.

Campana Cooperative trained as Weatherizers:

Sustentabilizadores de Campana



WEATHERIZERS WITHOUT BORDERS – WWB

**Public Demonstrations with
cutting edge diagnostic
technologies**



**WEATHERIZERS
WITHOUT BORDERS – WWB**



**Sample of 150 houses audited
by the Cooperative**



**WEATHERIZERS
WITHOUT BORDERS – WWB**



**Sample of 150 houses audited
by the Cooperative**



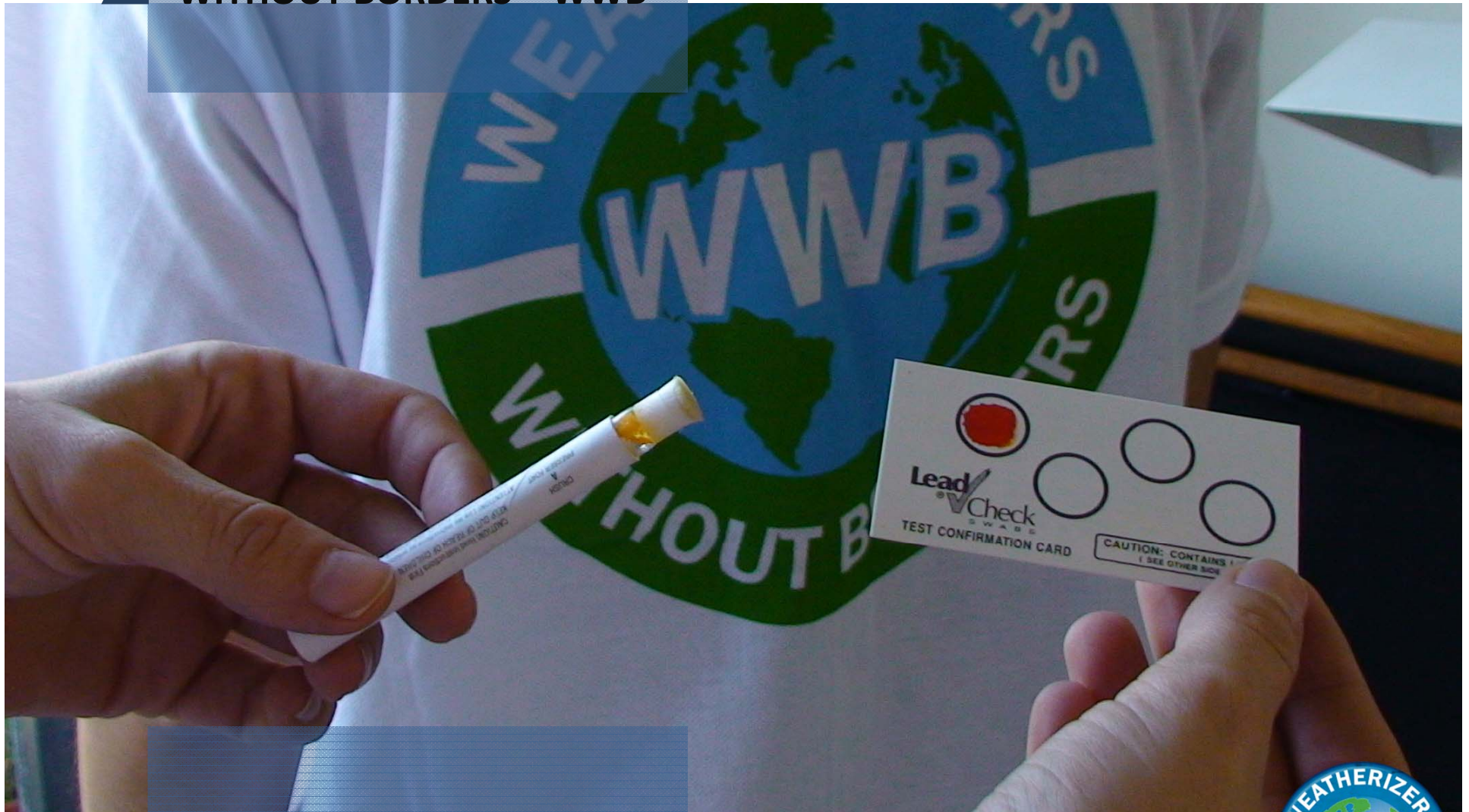
**WEATHERIZERS
WITHOUT BORDERS – WWB**



**Sample of 150 houses audited
by the Cooperative**



**WEATHERIZERS
WITHOUT BORDERS – WWB**



**Sample of 150 houses audited
by the Cooperative**



**WEATHERIZERS
WITHOUT BORDERS – WWB**



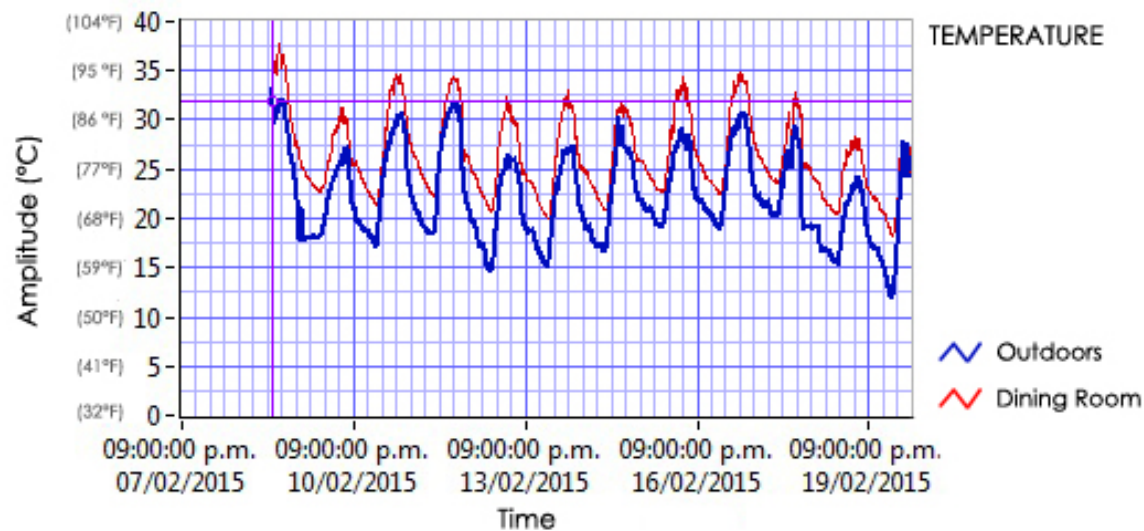
Juan's house

Ejemplo de mediciones



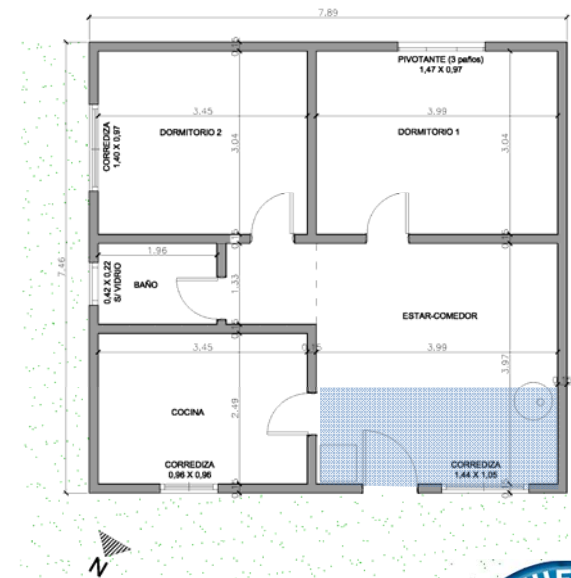
la puerta tiene marco de chapa y hoja de madera

WEATHERIZERS WITHOUT BORDERS – WWB

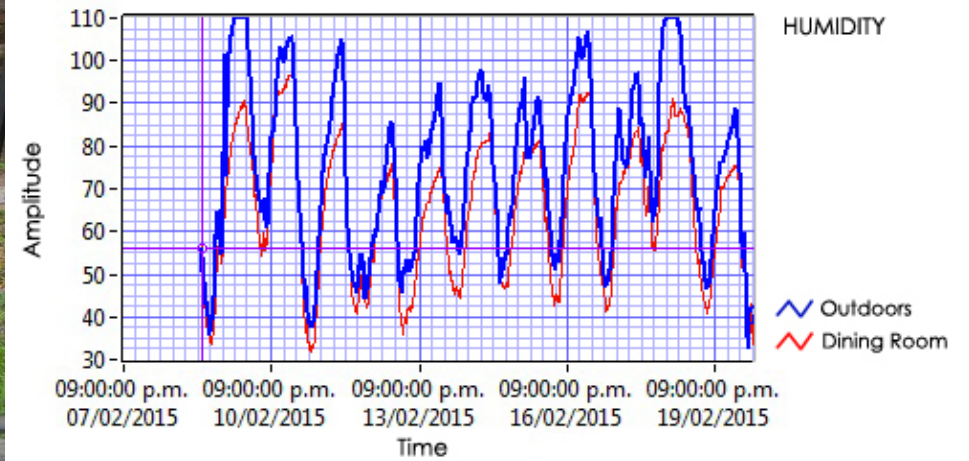
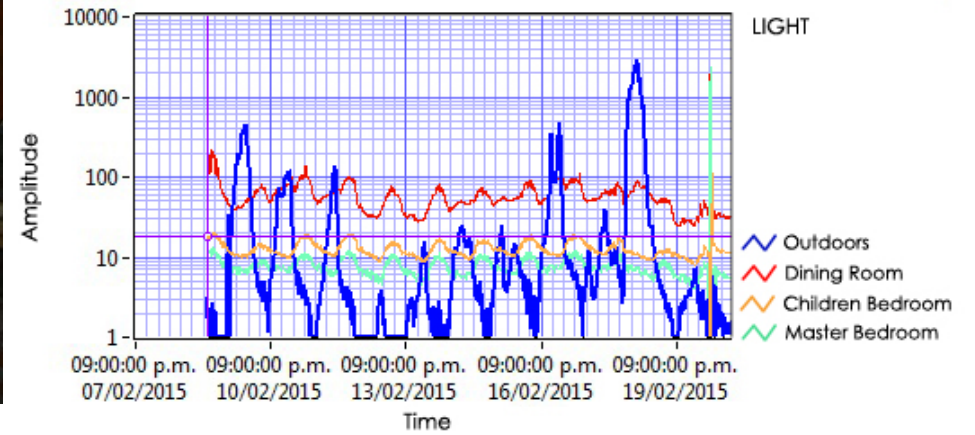


Se realizaron mediciones durante 11 días. La temperatura interior es superior a la exterior en todo momento con diferencias máximas de 10,8 F (6 C) .

Nota aparte: en invierno se da la



WEATHERIZERS WITHOUT BORDERS – WWB



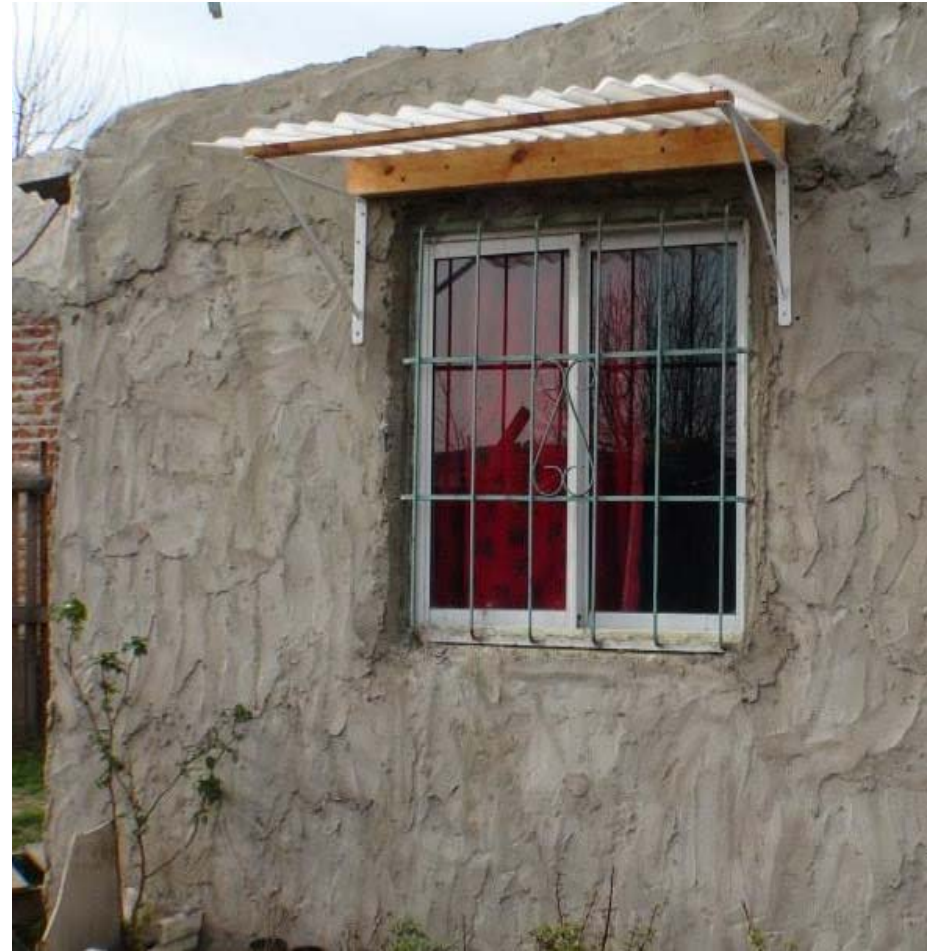
**WEATHERIZERS
WITHOUT BORDERS – WWB**



**Sample of 100 houses
weatherized by the Cooperative**



WEATHERIZERS WITHOUT BORDERS – WWB



Sample of 100 houses
weatherized by the Cooperative



**WEATHERIZERS
WITHOUT BORDERS – WWB**



**Sample of 100 houses
weatherized by the Cooperative**



WEATHERIZERS WITHOUT BORDERS – WWB



Sample of 100 houses
weatherized by the Cooperative
*Simple & economic retrofits to
improve the houses' performance*



WEATHERIZERS WITHOUT BORDERS – WWB



- Public Demonstrations with cutting edge diagnostic technologies

