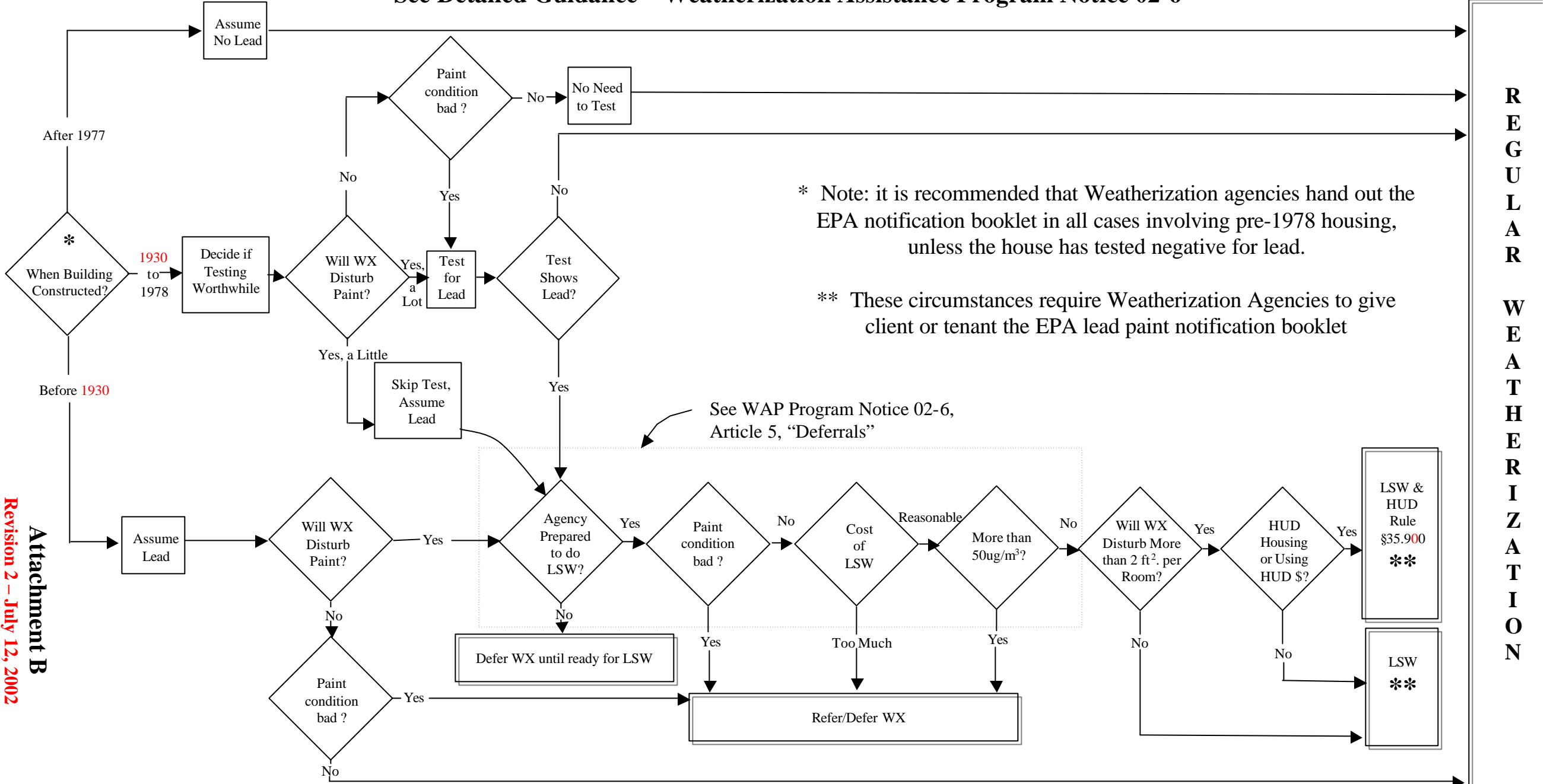


Decision Flow Chart for Applicability of Lead Safe Weatherization (LSW) Measures

See Detailed Guidance – Weatherization Assistance Program Notice 02-6

July 12, 2002



* Note: it is recommended that Weatherization agencies hand out the EPA notification booklet in all cases involving pre-1978 housing, unless the house has tested negative for lead.

** These circumstances require Weatherization Agencies to give client or tenant the EPA lead paint notification booklet

See WAP Program Notice 02-6, Article 5, "Deferrals"

REGULAR WEATHERIZATION

Attachment B
Revision 2 – July 12, 2002