

# Weatherization Assistance Program

**FUNDING SURVEY**

PY 2013



WEATHERIZATION  
ASSISTANCE  
PROGRAM

# Contents

Summary.....	1
Background .....	1
Funding Sources.....	2
Funding Trends.....	3
Production Summary .....	4
Funding Future .....	5

## Tables and Figures

Table 1: Total All Funds 2003–2013.....	5
Table 2: Total 2003–2013 .....	6
Table 3: Total by Funding Source 2013.....	8
Table 4: DOE Funding Levels 2003–2013 .....	10
Table 5: LIHEAP Funding Levels 2003–2013.....	12
Table 6: Other Funding Levels 2003–2013.....	14
Table 7: Source of Other Funds.....	16
Figure 1: DOE WAP Funding vs Total WAP Funding 2003–2013.....	17
Figure 2: LIHEAP WAP Funding vs Total WAP Funding 2003–2013.....	17
Figure 3: Other Funding vs Total WAP Funding 2003–2013 .....	18
Figure 4: Total All Funding Sources 2003–2013.....	18
Figure 5: WAP Funding Over Time 2003–2013 .....	19
Figure 6: WAP Funding by Source 2013.....	19



*National Association  
for State Community  
Services Programs*



WEATHERIZATION  
ASSISTANCE  
PROGRAM



# Weatherization Assistance Program PY 2013 Funding Survey

## Summary

The National Association for State Community Services Programs' (NASCSP) survey of the 50 states; District of Columbia; U.S. Territories of Puerto Rico, Guam, U.S. Virgin Islands, Commonwealth of the Northern Mariana Islands (CNMI), and American Samoa; and Native American Tribes finds that an estimated \$917,989,831 was available to Grantees of the U.S. Department of Energy's (DOE) Low-Income Weatherization Assistance Program (WAP) for Program Year (PY) 2013 (April 1, 2013 to March 31, 2014 for some Grantees, July 1, 2013 to June 30, 2014 for most others, and October 1, 2013 to September 30, 2014 for a few) in regular DOE, Low Income Home Energy Assistance Program (LIHEAP), and Other funds, such as utility funds. This figure represents a small decrease of \$3,088,306 in overall funds from the PY 2012 funding level of \$921,078,137. A national network of Grantees, local agencies, and private contractors will use these annual grant funds to weatherize an estimated 129,495 low-income homes.

PY 2013 brought unprecedented challenges to the WAP network due to the conclusion of the Recovery Act period and annual DOE appropriations significantly reduced from pre-Recovery Act levels. These factors led to considerable reassessment of WAP operations at the Federal, Grantee, and local levels, as well as a shift in the use of resources, reflecting the concerns and challenges of predicted lower funding levels for the foreseeable future.

## Background

The WAP was created in 1976 to assist low-income families who lack the resources necessary to invest in energy efficiency improvements for their homes. The mission of the WAP is: "To reduce energy costs for low-income families, particularly for the elderly, people with disabilities, and children, by improving the energy efficiency of their homes while ensuring their health and safety." All 50 states, the District of Columbia, Native American tribes, and U.S. Territories operate the WAP and use funds to improve the energy efficiency of low-income homes with the most advanced technologies and diagnostic testing protocols available in the energy efficiency retrofit industry. The energy savings resulting from the efforts of Grantees and local agencies help our country reduce its dependence on foreign oil and decrease the cost of energy for families in need while improving the durability, comfort, health, and safety of their homes.

Annual DOE appropriations from Congress provide core funding for the WAP, which is governed by various federal regulations designed to manage and account for the resources provided and ensure proper use of taxpayer dollars. The NASCSP WAP Funding Survey is the only comprehensive measure of all funds, including non-DOE funds, used in the Program. Each year, the survey catalogues the funding and production levels for each Grantee of the Program as well as the source of that funding. The WAP Funding Survey also serves as the historical reference for all Program funding from various sources, maintaining data for over 20 years while publishing the previous 10 years in each report.

As noted above, 2013 saw a continued ramp-down of higher funding levels due to the Recovery Act, which infused \$5 billion into the Program and allowed unprecedented expansion in infrastructure, workforce, and training. Very few states had available Recovery Act funds for production purposes for PY 2013, as the majority of any balance of funds was for work associated with the Sustainable Energy Resources for Consumers Grants (SERC) awards. While the WAP network was well aware that the Recovery Act funding was an atypical, one-time allocation, the spending out of those grants and the reduced 2012 and 2013 appropriations proved very challenging for the WAP network operators trying to maintain the highest number of trained workers and service capacity as possible.

## Funding Sources

As in past program years, funds come from three major sources: DOE's WAP, the U.S. Department of Health and Human Services' (HHS) LIHEAP, and Other funds. The term Other is used to categorize all other sources of funds besides DOE and LIHEAP, most often from utility partnerships and State sources.



## DOE

DOE Grantees estimate \$152,908,872 in DOE regular funds will be available in PY 2013 to weatherize 37,604 homes. This figure represents a decrease of 25.5 percent compared to actual funds reported for PY 2012 (\$205,249,424), reflecting that most Grantees had expended previous unexpended Annual Grant funds from previous years. PY 2012 available funds were significantly above the annual appropriation due to rollover of unexpended Annual Grant funds from previous years during the unprecedented high Recovery act funding levels. In 2013, DOE funding represents 16.7 percent of the total funds available for WAP, a decrease of 5.6 percentage points from PY 2012. These figures exclude any Recovery Act funding balances, which nationally are less than 0.5% of the grants.

## LIHEAP

State LIHEAP offices may utilize up to 15 percent of their LIHEAP block grant to fund WAP related activities. This can include emergency energy efficiency related repairs as well as traditional weatherization, among other items. In PY 2013, WAP Grantees estimate \$406,870,532 in LIHEAP funds will be available for these energy efficiency activities. This is a decrease of 8.6 percent or \$38,266,423 from the actual funds reported for PY 2012 (\$445,136,955). The 8.6 percent decrease in LIHEAP funds available for WAP is a little more than the overall total LIHEAP allocations reductions of 6.2 percent.

Funds provided through LIHEAP comprise 44.3 percent of the total funds available in PY 2013, down 4 percent from last year. Forty-six Grantees will transfer LIHEAP funds into WAP in PY 2013, compared with forty-four in 2012. Alabama and Michigan are the two WAP Grantees that received LIHEAP funds in 2013 that did not in 2012. Of those Grantees, 11 increased and 32 decreased LIHEAP transfers, most likely due to reduced LIHEAP funding overall. Three Grantees transferred the same amount as last year. Thirteen Grantees have no available LIHEAP funds for 2013, including Connecticut, Hawaii, South Dakota, Tennessee, Vermont, Inter-Tribal Council of Arizona (ITCA), Navajo, Northern Arapaho, American Samoa, Guam, Puerto Rico, Northern Mariana Isles, and the Virgin Islands. LIHEAP transfers range from a low of \$475,700 in Nevada to a high of \$37,980,484 in California.

## Other<sup>1</sup>

WAP operators will use \$358,210,427 in funding from utility companies, State general funds, and State Public Benefit Funds to expand WAP services in PY 2013. This represents an increase of 32.3 percent, or \$87,518,669, over last year's funding level of \$270,691,758, reflecting the need to leverage additional funds post-Recovery Act. The Funding Survey only reflects Other funds that are administered by the Grantees or somehow reported to the Grantees. These figures may be skewed by the fact that a large part of the big increase between 2012 and 2013 is that Ohio reported \$53,103,421 Other funds that are not administered by the Ohio WAP office, but were reported to them for inclusion in this survey. Some Other funds that go directly to subgrantee agencies may not be reflected in this report. Utility companies serve as the primary source of Other funds, followed by State Public Benefit Funds and other State funds.

Thirty-three Grantees reported Other funds with their WAP funds in 2013, up from twenty-six in 2012. Nine reported Other funds when they had not last year, and two reported none for 2013 after receiving funds in 2012. In addition to the nine new Grantees reporting Other funds, Colorado, Idaho, Vermont, and Washington all reported greater than 50% increases in Other funds over 2012. Illinois also had a very significant gain of more than \$7.7 million, a 29.5 percent increase. Other funds category will represent 39.0 percent of the total funds available for WAP in PY 2013, a 9.6 percentage point increase over last year's representation.

## Recovery Act

The Recovery Act provided \$5 billion to WAP, adding \$4,746,249,999 to the network for use between April 1, 2009 to March 31, 2012, with an additional \$90,000,000 for Sustainable Energy Resources for Consumers (SERC) Grants and \$29,055,310 for WAP training centers. Many Grantees had received grant modifications to extend the end of their grant periods for three to 18

<sup>1</sup> As PVE funds have declined precipitously in the past several years, it is no longer a separate category for the purposes of the Funding Survey. Instead, those funds are now included under Other funds.





months in order to expend all funds. Less than 0.5% of Recovery Act funds are currently unspent, and the vast majority of grants are retired or in Closeout. This one time infusion of funds enabled the network to expand quickly to meet the expectations of the Obama Administration to weatherize an anticipated 634,956, low-income homes. More than 800,000 homes were weatherized with these funds, exceeding the predicted goal by more than 165,000 homes. The WAP network met the challenge of the Recovery Act and has since scaled back operations to reflect greatly reduced funding levels. Recovery Act funds and production were included in the 2010 – 2012 Funding Surveys, but are not in the 2013 or any future reports.

## Funding Trends

The previous section compared actual funds available in PY 2012 with estimated funds available in PY 2013, including funds rolled over from previous years. With the end of the Recovery Act, annual appropriations less than pre-Recovery Act levels, and uncertain Congressional support in a budget tightening environment, the near future growth and sustainability of the Program are uncertain. FY 2014 appropriations of \$174,000,000, significantly above 2012 and 2013 levels, indicates the prospect that support for the program is expanding and getting funding back to pre-Recovery Act levels may be possible in the near future. Below are some of the other funding trends reflected in the survey results:

Over the past 10 years, available DOE funding has fluctuated from a high of \$413,276,722 in PY 2009 to a low of \$152,908,872 in PY 2013. Available DOE funds in PY 2013 are lower than PY 2012 funds by \$52,340,552. The balance of available funds for 2012 was largely a result of funds carried over from previous years' unexpended grant funds. Carry over levels were much higher than normal due to the availability and priority of spending Recovery Act funds. New DOE appropriations for FY 2012 were only \$68 million, the lowest figure in over 30 years.

The regulations governing LIHEAP allow for up to 15 percent of a Grantee's allocation to be used for WAP. Up to 25 percent is allowable with a waiver from HHS. The amount of LIHEAP funds dedicated to the WAP is usually in direct proportion to the national appropriation of these funds by Congress and the distribution of emergency LIHEAP funds by the President. In 2013, Grantees received \$3.25 billion in LIHEAP. Forty-six WAP grantees received LIHEAP transfers for a total of \$406,870,532 in 2013 or 12.5 percent of the 2013 national LIHEAP allocation, \$38,266,423 less than 2012. It is reasonable to assume that as LIHEAP appropriations rise and fall, so will the amounts transferred to WAP. The decreased LIHEAP transfers are likely due to the decrease in LIHEAP funds as a whole from \$3.47 billion in 2011 to \$3.25 billion in 2012.

In 2013, two States reported the use of Petroleum Violation Escrow (PVE) funds in the WAP. PVE funds were the result of fines oil companies paid for violating established federal oil price caps in the years following the OPEC oil embargo in the early 1970s. 2009 marked a dramatic decrease in PVE funding, with a 90.9 percent decrease. Grantees no longer depend on PVE funds to offset core capacity within their networks and look to DOE, LIHEAP, and Other sources to sustain their expanding service delivery. As such, these funds are no longer categorized as a separate funding source, but are preserved in past data for comparison purposes.

Funds in the Other category have steadily increased since 1989, notwithstanding a large outlier of \$200 million in State funding in Alaska in 2008. The generally increasing trend reflects an understanding within the network that leveraging additional resources is needed to offset fluctuations in federal funding, better meet the backlog of qualified households needing services, and to provide more comprehensive services on homes needing more than what DOE funds allow and can afford. Grantee and local WAP agencies continue to seek leveraging opportunities with companion programs and other publicly and privately funded initiatives to increase funding and improve the selection of services available to low-income families. Healthy homes programs are increasingly partnering with WAP, as reflected in the DOE's Weatherization Plus Health initiative, a nationwide effort to enable the comprehensive, strategic coordination of resources for energy, health, and safety in low-income homes. It is important to note that, while there has been additional focus on identifying new sources of funding and an increased number of Grantees report some funds in this category, a large percentage of the total funds reflected in the Other category are still from relatively few states.

WAP activities continue to depend on a variety of funding sources. WAP relies heavily on leveraging activity. In PY 2013, WAP will utilize approximately \$765,080,959 of non-DOE funds in LIHEAP, Grantee, and private funds, or approximately \$5 in other federal and non-federal resources for every dollar invested by DOE.



Grantees may budget a portion of DOE funds as “leveraging funds” to be used in initiatives to garner additional funding from sources outside the traditional network. In 2013, 11 Grantees designated \$918,780 for this purpose. While many partnerships were already in place and some leveraging occurs without using DOE funds, the ratio of Other funds compared to the DOE expended leveraging investment is 389:1, reflecting the success of WAP network leveraging activities. These figures include all Other funds, such as those from utility companies, State general funds, and State public benefit funds, but do not include LIHEAP funding.

## Production Summary

The WAP Funding Survey provides an opportunity for Grantees to estimate the number of homes to be weatherized using various funding sources. The average maximum allowable cost per unit was increased from \$2,966 in 2008 to \$6,500 in 2009, allowing more cost-effective measures to be installed and more funds to be spent per home, therefore weatherizing fewer total homes. This figure has been inflation-adjusted to \$6,904 for 2013. The 2013 WAP Funding Survey results indicate that the network will weatherize approximately 129,495 homes using all funds with the exception of Recovery Act funding. Some Grantees report production as “unduplicated” – meaning that a single specific funding source (DOE, LIHEAP) is used for those jobs. Other Grantees report production as “blended” – meaning that other funds (LIHEAP, Other) are added to DOE or other funds to enhance the energy efficiency services to program recipients. The following are some highlights and conclusions related to the production reports:

Grantees will weatherize approximately 37,604 units using primarily DOE funds and including those using DOE funds blended with LIHEAP and/or Other funds. Thirty-six Grantees (or 61 percent) reported their DOE production as unduplicated, while 22 Grantees (or 37.3 percent) reported their DOE production as blended with other funds. Eight Grantees (or 13.5 percent) will complete no units with DOE 2012 annual grant funding, due to the focus on completing Recovery Act grant activities as quickly as possible.

Grantees will weatherize approximately 56,110 homes using LIHEAP as the primary funding source, either with just LIHEAP funds or combined with Other funds. These units will not be reported to DOE as completions since there is no requirement to report units to DOE that do not include a DOE investment.

Grantees will use Other funds as the sole funding source to work on 35,781 homes. In addition, Other funds are most often used to supplement DOE and LIHEAP funds in a home and so are reported as completed homes under DOE or LIHEAP. Homes weatherized using Other funds may or may not be reported to DOE based on the source of the leveraging activity and DOE’s investment in the units. An example is in Ohio, where there is a very large investment from multiple utilities, but the investments and measures performed are administered and tracked only on the local level and not reported to the State office.

## Funding Future

The WAP community is continuing to adjust to the reduced funding levels and capacity built up during the Recovery Act. Many Grantees and sub-grantees have been forced to lay off workers and shrink their operations. Some smaller local operations have not been able to sustain their programs. While Grantees remain committed to providing WAP services in all local jurisdictions, some have moved to or are considering having local agencies cover larger service territories.

The near future funding from the two federal sources is difficult to forecast. While the FY 2014 DOE WAP grant is significantly higher than FY 2012 and FY 2013, it is still below pre-Recovery Act levels. Future funding levels are currently uncertain due to the unpredictable political atmosphere. LIHEAP funding levels are likewise uncertain in the current political environment. The percentage of LIHEAP funds transferred to WAP is expected to remain consistent – typically the amount shifts in accordance with increases or decreases in Congressional appropriations. Other funds may increase as leveraging and new markets become even more of a focus to fund the WAP to sustain capacity. WAP providers are actively pursuing additional, innovative sources of funding and considering an expanded focus for WAP in the emerging green residential retrofit market, as well as connecting to non-traditional partners.

The WAP network will continue to rely on Congressional support and alternative revenue sources for the Program. The WAP network is very dependent on DOE funding to support administration at the Grantee and local levels, the auditing of homes, training and technical assistance, related health and safety measures, quality control, and the evaluation of program



effectiveness. DOE funding has typically defined the WAP network and infrastructure, and DOE rules, guidance, and standards are the foundation for the entire network and other funding sources. Over the past 30 years, professionals working within WAP have developed exacting standards for effectiveness, quality, and energy efficiency. By achieving these high standards, WAP is the leader of the energy efficiency retrofit industry in best practices, diagnostic testing protocols, and installation techniques, and has created an environment in which other public and private organizations are willing to invest. DOE funds remain critical to continued Program success, and the continued operation of WAP as a national program serving all local jurisdictions is threatened without adequate DOE funding levels.

Leveraging additional resources to complement DOE funds is critical to sustaining WAP as a national program. The WAP network is also engaged in developing new partnerships to expand the role of WAP in local communities, with the intent to provide a more comprehensive set of services to low-income WAP clients and/or provide weatherization services to non-low-income households. WAP operators are keenly aware that more diverse funding streams will lessen the impact of major reductions to any single funding source.

The following pages contain charts and graphs that depict the status of WAP funding this year and the increases and declines in funding over the past 10 years.

### Weatherization Assistance Program Funding Survey

**Table 1: Total All Funds 2003–2013**

	Funding Source									
	DOE		LIHEAP		PVE		Other		Total	
2003	\$223,812,853	37.4%	\$219,474,943	36.6%	\$5,535,811	0.9%	\$151,394,390	25.3%	\$599,041,592	100.2%
2004	\$224,107,626	37.2%	\$225,698,196	37.5%	\$2,605,043	0.4%	\$150,286,811	24.9%	\$602,510,952	100.0%
2005	\$228,890,576	35.8%	\$247,350,505	38.7%	\$6,166,469	1.0%	\$157,697,188	24.6%	\$639,917,201	100.0%
2006	\$238,291,851	32.7%	\$312,664,523	43.0%	\$3,761,577	0.5%	\$173,109,924	23.8%	\$727,827,875	100.0%
2007	\$206,424,695	30.4%	\$260,115,214	38.3%	\$4,287,384	0.6%	\$207,581,430	30.6%	\$678,408,724	100.0%
2008	\$237,506,900	24.2%	\$332,778,124	34.0%	\$9,379,580	1.0%	\$400,299,377	40.8%	\$979,963,981	100.0%
2009	\$413,276,722	39.7%	\$456,021,761	43.8%	\$852,159	0.1%	\$170,238,501	16.4%	\$1,040,389,143	100.0%
2010	\$204,686,484	24.5%	\$422,535,800	50.7%	*		\$206,629,086	24.8%	\$833,851,370	100.0%
2011	\$243,291,578	26.3%	\$452,100,169	48.9%	*		\$228,536,931	24.7%	\$923,928,679	100.0%
2012	\$205,249,424	22.3%	\$445,136,955	48.3%	*		\$270,691,758	29.4%	\$921,078,137	100.0%
2013	\$152,908,872	16.7%	\$406,870,532	44.3%	*		\$358,210,427	39.0%	\$917,989,831	100.0%

\*PVE figure included in Other funds



## FUNDING SURVEY PY2013

### Weatherization Assistance Program Funding Survey

**Table 2:**  
**Total**  
**2003–2013**

Grantee	2003	2004	2005	2006	2007	2008
Alabama	\$3,115,832	\$3,448,613	\$3,461,895	\$3,829,626	\$3,214,809	\$3,451,916
Alaska	\$5,803,923	\$5,785,101	\$5,119,616	\$5,341,472	\$6,131,367	\$202,040,077
Arizona	\$3,344,978	\$3,817,125	\$3,470,690	\$4,972,511	\$6,797,021	\$9,225,865
Arkansas	\$6,199,436	\$3,841,539	\$3,693,738	\$4,109,158	\$4,663,316	\$5,369,603
California	\$26,488,923	\$28,565,119	\$34,023,544	\$44,623,968	\$29,027,786	\$30,040,723
Colorado	\$12,632,303	\$12,437,330	\$12,663,945	\$14,066,141	\$12,270,886	\$12,051,593
Connecticut	\$6,362,509	\$6,416,795	\$2,517,795	\$7,543,439	\$6,942,994	\$9,005,304
Delaware	\$1,113,017	\$1,257,787	\$1,457,217	\$1,112,727	\$1,385,509	\$1,598,420
Dist. Columbia	\$2,655,764	\$2,698,666	\$2,271,292	\$4,654,614	\$5,220,735	\$9,736,259
Florida	\$8,406,415	\$5,637,306	\$11,272,084	\$7,957,713	\$9,105,628	\$19,669,400
Georgia	\$6,852,817	\$6,405,577	\$6,418,319	\$10,332,669	\$7,426,583	\$7,959,157
Hawaii	\$201,583	\$204,993	\$217,077	\$217,160	\$282,379	\$282,379
Idaho	\$4,266,056	\$4,987,037	\$6,023,174	\$7,846,308	\$9,782,584	\$8,311,847
Illinois	\$35,845,888	\$35,260,793	\$37,618,757	\$44,457,622	\$37,797,411	\$52,300,069
Indiana	\$13,267,971	\$14,077,482	\$13,243,493	\$14,503,063	\$14,983,057	\$15,607,244
Iowa	\$12,727,525	\$13,759,834	\$15,010,934	\$15,427,498	\$14,739,152	\$15,313,555
Kansas	\$4,804,306	\$4,429,674	\$4,849,435	\$5,331,304	\$6,765,489	\$5,016,807
Kentucky	\$7,890,277	\$7,324,517	\$8,679,816	\$10,284,771	\$9,328,490	\$11,957,645
Louisiana	\$3,683,888	\$1,731,371	\$3,879,558	\$4,697,518	\$4,250,967	\$10,050,690
Maine	\$7,830,034	\$7,558,438	\$8,121,142	\$8,913,916	\$6,667,043	\$7,906,946
Maryland	\$2,833,047	\$4,276,630	\$5,461,406	\$6,019,356	\$3,556,774	\$5,554,363
Massachusetts	\$28,765,535	\$30,587,484	\$35,045,683	\$36,392,057	\$34,750,524	\$36,115,129
Michigan	\$22,582,631	\$23,690,413	\$25,472,442	\$22,946,624	\$23,989,024	\$29,043,849
Minnesota	\$18,479,385	\$14,403,455	\$23,262,867	\$23,267,635	\$16,579,465	\$20,772,492
Mississippi	\$1,620,281	\$3,816,428	\$1,655,581	\$1,850,660	\$1,476,791	\$1,640,948
Missouri	\$7,663,363	\$7,768,549	\$8,052,907	\$10,999,886	\$8,272,886	\$9,356,596
Montana	\$6,973,068	\$5,970,798	\$7,243,081	\$8,147,477	\$8,147,477	\$10,122,015
Nebraska	\$4,857,591	\$5,222,109	\$4,787,710	\$7,149,459	\$4,546,040	\$5,441,725
Nevada	\$4,354,593	\$3,472,684	\$3,611,010	\$4,457,994	\$4,909,884	\$5,170,074
New Hampshire	\$3,074,049	\$3,379,465	\$3,011,400	\$4,222,520	\$4,292,709	\$5,205,906
New Jersey	\$8,866,219	\$8,952,038	\$8,732,246	\$10,973,959	\$10,167,095	\$11,358,338
New Mexico	\$2,846,464	\$3,816,812	\$5,901,106	\$3,580,690	\$4,079,992	\$3,939,992
New York	\$62,156,894	\$61,219,078	\$60,647,038	\$65,305,457	\$63,009,524	\$77,800,000
North Carolina	\$10,537,129	\$9,582,423	\$9,920,810	\$14,591,405	\$9,821,669	\$12,319,935
North Dakota	\$4,345,377	\$4,370,079	\$4,614,883	\$4,589,151	\$4,354,121	\$5,500,000
Ohio	\$50,405,476	\$48,604,375	\$49,236,390	\$56,636,231	\$61,220,651	\$61,601,632
Oklahoma	\$3,536,907	\$3,748,376	\$3,687,720	\$5,092,386	\$3,964,430	\$4,594,573
Oregon	\$14,637,847	\$15,399,682	\$14,098,836	\$13,815,641	\$17,866,503	\$14,017,108
Pennsylvania	\$32,486,600	\$33,723,066	\$34,763,257	\$43,093,384	\$41,728,518	\$49,233,884
Rhode Island	\$3,553,671	\$3,356,210	\$3,711,108	\$4,713,599	\$5,428,205	\$4,768,801
South Carolina	\$2,982,059	\$3,632,137	\$3,634,960	\$3,980,397	\$3,587,936	\$3,869,409
South Dakota	\$3,426,367	\$3,459,349	\$3,467,614	\$3,580,351	\$3,516,592	\$5,057,661
Tennessee	\$5,979,828	\$6,691,292	\$6,351,237	\$7,237,435	\$5,987,655	\$17,052,105
Texas	\$23,873,624	\$16,192,351	\$15,119,764	\$20,689,503	\$13,918,324	\$13,881,694
Utah	\$5,361,185	\$4,330,501	\$5,720,537	\$5,983,065	\$5,377,415	\$10,289,015
Vermont	\$5,492,325	\$5,982,327	\$7,275,275	\$7,337,289	\$8,633,731	\$9,215,727
Virginia	\$9,734,727	\$10,815,283	\$11,163,455	\$15,594,662	\$10,381,007	\$10,552,753
Washington	\$17,025,539	\$19,843,586	\$19,719,456	\$18,588,110	\$19,630,502	\$19,067,884
West Virginia	\$5,769,583	\$5,752,110	\$5,745,647	\$7,393,377	\$7,269,890	\$8,317,959
Wisconsin	\$49,087,494	\$57,889,706	\$62,191,216	\$64,938,612	\$69,672,345	\$68,199,241
Wyoming	\$2,239,289	\$2,917,059	\$2,597,038	\$4,073,872	\$1,198,193	\$3,597,197
ITCA*	n/a	n/a	n/a	n/a	n/a	\$88,741
Navajo	\$1,176,405	\$186,724	\$187,537	\$362,433	\$289,645	\$321,735
N. Arapaho	n/a	n/a	n/a	n/a	n/a	n/a
American Samoa	n/a	n/a	n/a	n/a	n/a	n/a
Guam	n/a	n/a	n/a	n/a	n/a	n/a
Puerto Rico	n/a	n/a	n/a	n/a	n/a	n/a
N. Mariana Isles	n/a	n/a	n/a	n/a	n/a	n/a
Virgin Islands	n/a	n/a	n/a	n/a	n/a	n/a
<b>Totals</b>	<b>\$599,041,592</b>	<b>\$602,510,952</b>	<b>\$639,917,201</b>	<b>\$727,827,875</b>	<b>\$678,408,724</b>	<b>\$979,963,981</b>
% of Prog. Funding	100%	100%	100%	100%	100%	100%
Number of Grantees receiving funds	53	53	53	53	53	54

**Note:** n/a indicates that the entity was not a Grantee at the time.





2009	2010	2011	2012	2013	% change 2012 to 2013	2013 Total Unit Production
\$9,000,537	\$2,232,352	\$2,018,560	\$3,354,516	\$6,230,495	85.7%	376
\$3,052,478	\$37,729,537	\$31,987,597	\$58,660,480	\$60,472,690	3.1%	3,104
\$7,710,488	\$8,339,816	\$10,800,444	\$10,617,349	\$7,722,041	-27.3%	753
\$7,979,054	\$6,996,720	\$6,800,715	\$8,897,874	\$5,571,857	-37.4%	461
\$63,716,032	\$61,693,230	\$61,758,548	\$47,952,744	\$37,980,484	-20.8%	12,532
\$11,416,305	\$11,634,451	\$20,918,861	\$17,738,473	\$19,669,969	10.9%	2,979
\$12,815,348	\$3,722,276	\$1,909,269	\$1,319,737	\$1,000,092	-24.2%	194
\$3,962,172	\$1,460,428	\$2,256,401	\$2,952,395	\$2,898,641	-1.8%	390
\$7,142,279	\$6,563,019	\$2,948,766	\$688,950	\$4,039,000	486.3%	924
\$17,686,988	\$1,484,081	\$15,081,202	\$16,494,878	\$10,825,416	-34.4%	1,388
\$13,233,067	\$6,951,778	\$11,151,393	\$13,726,553	\$6,799,639	-50.5%	825
\$393,559	\$669,266	\$170,561	\$216,041	\$168,025	-22.2%	42
\$10,257,617	\$7,839,911	\$8,954,781	\$8,877,298	\$9,558,391	7.7%	1,070
\$60,443,286	\$38,732,251	\$45,214,734	\$60,639,222	\$70,369,822	16.0%	6,364
\$18,636,696	\$12,648,950	\$15,913,160	\$22,051,087	\$20,286,955	-8.0%	2,208
\$23,722,850	\$19,070,816	\$27,870,844	\$21,625,772	\$17,339,738	-19.8%	877
\$11,550,282	\$4,563,931	\$8,334,670	\$6,620,508	\$6,660,517	0.6%	1,053
\$7,640,899	\$5,070,670	\$4,477,261	\$11,688,423	\$9,479,846	-18.9%	788
\$11,773,632	\$4,183,867	\$5,961,901	\$8,387,869	\$7,296,092	-13.0%	852
\$12,103,990	\$7,626,351	\$3,136,132	\$5,131,008	\$3,856,591	-24.8%	303
\$7,648,390	\$7,265,448	\$6,149,017	\$22,363,895	\$25,296,493	13.1%	2,981
\$52,794,866	\$47,137,610	\$54,970,851	\$51,794,887	\$52,614,575	1.6%	30,584
\$43,449,859	\$36,249,465	\$41,922,668	\$12,147,503	\$20,565,468	69.3%	1,918
\$27,901,628	\$26,013,496	\$21,578,021	\$24,107,718	\$20,493,441	-15.0%	2,792
\$8,744,293	\$7,527,055	\$7,114,683	\$5,313,171	\$4,408,280	-17.0%	627
\$14,523,993	\$7,656,676	\$16,755,858	\$15,709,017	\$7,684,942	-51.1%	850
\$12,450,858	\$8,161,843	\$10,685,643	\$10,207,356	\$8,351,264	-18.2%	3,000
\$9,660,622	\$6,862,341	\$6,595,510	\$5,247,883	\$3,831,397	-27.0%	562
\$5,627,218	\$4,127,811	\$3,652,980	\$4,696,152	\$4,557,921	-2.9%	776
\$3,033,628	\$1,693,071	\$1,887,808	\$1,777,000	\$7,500,391	322.1%	1,700
\$28,044,562	\$24,744,240	\$29,869,812	\$24,196,759	\$17,787,690	-26.5%	1,780
\$8,215,856	\$6,597,429	\$5,334,796	\$5,282,375	\$2,760,967	-47.7%	408
\$114,500,000	\$70,614,147	\$73,911,550	\$69,362,251	\$53,190,469	-23.3%	7,848
\$16,322,200	\$12,435,097	\$14,556,773	\$24,006,330	\$25,812,396	7.5%	3,766
\$1,664,727	\$3,569,451	\$6,065,145	\$6,031,880	\$6,731,763	11.6%	778
\$53,633,503	\$49,313,107	\$26,698,721	\$38,089,246	\$85,585,795	124.7%	8,547
\$7,750,319	\$3,162,040	\$2,884,504	\$5,264,375	\$3,523,225	-33.1%	490
\$18,514,098	\$17,334,456	\$17,845,248	\$17,269,757	\$20,012,254	15.9%	1,266
\$41,100,552	\$30,177,169	\$36,144,041	\$44,578,644	\$28,569,238	-35.9%	986
\$7,682,479	\$5,502,223	\$10,988,873	\$8,798,600	\$9,565,068	8.7%	990
\$11,722,199	\$11,452,883	\$12,608,421	\$11,983,009	\$7,132,336	-40.5%	569
\$3,513,071	\$2,013,071	\$1,513,071	\$1,465,115	\$505,656	-65.5%	74
\$10,425,559	\$1,834,789	\$11,444,417	\$4,512,390	\$4,512,390	0.0%	252
\$44,814,627	\$37,015,179	\$38,260,450	\$31,506,604	\$30,089,267	-4.5%	4,244
\$7,022,718	\$4,588,680	\$2,898,129	\$5,865,720	\$5,005,678	-14.7%	521
\$6,615,014	\$6,014,491	\$7,980,912	\$7,447,003	\$15,750,889	111.5%	1,613
\$27,176,199	\$19,722,335	\$19,213,899	\$12,065,449	\$14,029,790	16.3%	368
\$32,380,236	\$27,948,910	\$24,139,883	\$19,278,301	\$30,514,025	58.3%	2,367
\$12,007,938	\$9,183,581	\$8,123,427	\$8,909,854	\$8,970,668	0.7%	1,792
\$82,802,765	\$82,696,472	\$107,873,157	\$87,938,723	\$77,594,630	-11.8%	6,762
\$2,311,280	\$4,025,231	\$4,075,173	\$4,551,102	\$4,504,388	-1.0%	563
n/a	\$79,614	\$67,245	\$61,729	\$73,729	19.4%	10
\$703,848	\$242,391	\$234,760	\$245,277	\$340,632	38.9%	32
\$144,840	\$69,412	\$77,145	\$94,450	\$105,798	12.0%	16
\$196,784	\$283,860	\$215,257	\$151,424	\$132,094	-12.8%	65
\$198,908	\$357,856	\$513,233	\$422,425	\$453,500	7.4%	0
\$452,558	\$647,129	\$627,557	\$0	\$405,670	100.0%	50
\$198,908	\$155,635	\$352,821	\$280,000	\$354,105	26.5%	65
\$200,481	\$161,976	\$431,420	\$413,587	\$445,248	7.7%	0
<b>\$1,040,389,143</b>	<b>\$833,851,370</b>	<b>\$923,928,679</b>	<b>\$921,078,137</b>	<b>\$917,989,831</b>	<b>-0.3%</b>	<b>129,495</b>
100%	100%	100%	100%	100%		
58	59	59	59	59	*Inter-Tribal Council of Arizona	



## FUNDING SURVEY PY2013

### Weatherization Assistance Program Funding Survey

**Table 3:**  
Total by Funding Source 2013

Grantee	2013 DOE	% of Total	2013 LIHEAP	% of Total	2013 OTHER	% of Total
Alabama	\$5,230,495	83.9%	\$1,000,000	16.1%	\$0	0.0%
Alaska	\$1,322,690	2.2%	\$1,000,000	1.7%	\$58,150,000	96.2%
Arizona	\$487,020	6.3%	\$3,735,021	48.4%	\$3,500,000	45.3%
Arkansas	\$1,615,506	29.0%	\$3,956,351	71.0%	\$0	0.0%
California	\$0	0.0%	\$37,980,484	100.0%	\$0	0.0%
Colorado	\$4,519,633	23.0%	\$5,090,800	25.9%	\$10,059,536	51.1%
Connecticut	\$500,092	50.0%	\$0	0.0%	\$500,000	50.0%
Delaware	\$452,837	15.6%	\$1,145,804	39.5%	\$1,300,000	44.8%
Dist. Columbia	\$539,000	13.3%	\$1,500,000	37.1%	\$2,000,000	49.5%
Florida	\$709,416	6.6%	\$10,116,000	93.4%	\$0	0.0%
Georgia	\$2,276,474	33.5%	\$2,773,165	40.8%	\$1,750,000	25.7%
Hawaii	\$168,025	100.0%	\$0	0.0%	\$0	0.0%
Idaho	\$1,551,391	16.2%	\$5,058,000	52.9%	\$2,949,000	30.9%
Illinois	\$13,156,546	18.7%	\$23,271,771	33.1%	\$33,941,505	48.2%
Indiana	\$5,104,457	25.2%	\$14,257,573	70.3%	\$924,925	4.6%
Iowa	\$4,585,167	26.4%	\$7,452,661	43.0%	\$5,301,910	30.6%
Kansas	\$1,863,608	28.0%	\$4,760,912	71.5%	\$35,997	0.5%
Kentucky	\$3,177,017	33.5%	\$6,302,829	66.5%	\$0	0.0%
Louisiana	\$529,968	7.3%	\$6,440,289	88.3%	\$325,835	4.5%
Maine	\$651,694	16.9%	\$2,091,682	54.2%	\$1,113,215	28.9%
Maryland	\$6,767,265	26.8%	\$1,000,000	4.0%	\$17,529,228	69.3%
Massachusetts	\$5,064,575	9.6%	\$8,500,000	16.2%	\$39,050,000	74.2%
Michigan	\$11,913,125	57.9%	\$8,652,343	42.1%	\$0	0.0%
Minnesota	\$4,924,869	24.0%	\$13,802,114	67.3%	\$1,766,458	8.6%
Mississippi	\$249,986	5.7%	\$4,158,294	94.3%	\$0	0.0%
Missouri	\$3,440,907	44.8%	\$1,000,000	13.0%	\$3,244,035	42.2%
Montana	\$676,220	8.1%	\$4,647,676	55.7%	\$3,027,368	36.3%
Nebraska	\$380,299	9.9%	\$3,281,397	85.6%	\$169,701	4.4%
Nevada	\$655,441	14.4%	\$475,700	10.4%	\$3,426,780	75.2%
New Hampshire	\$1,186,108	15.8%	\$500,000	6.7%	\$5,814,283	77.5%
New Jersey	\$773,962	4.4%	\$17,013,728	95.6%	\$0	0.0%
New Mexico	\$889,637	32.2%	\$1,368,000	49.5%	\$503,330	18.2%
New York	\$15,792,155	29.7%	\$37,398,314	70.3%	\$0	0.0%
North Carolina	\$2,065,144	8.0%	\$23,747,252	92.0%	\$0	0.0%
North Dakota	\$1,963,153	29.2%	\$4,748,410	70.5%	\$20,200	0.3%
Ohio	\$10,763,252	12.6%	\$21,719,122	25.4%	\$53,103,421	62.0%
Oklahoma	\$2,023,225	57.4%	\$1,500,000	42.6%	\$0	0.0%
Oregon	\$2,796,762	14.0%	\$4,796,990	24.0%	\$12,418,502	62.1%
Pennsylvania	\$2,228,808	7.8%	\$26,340,430	92.2%	\$0	0.0%
Rhode Island	\$232,526	2.4%	\$3,450,000	36.1%	\$5,882,542	61.5%
South Carolina	\$1,382,018	19.4%	\$5,750,318	80.6%	\$0	0.0%
South Dakota	\$505,656	100.0%	\$0	0.0%	\$0	0.0%
Tennessee	\$4,512,390	100.0%	\$0	0.0%	\$0	0.0%
Texas	\$4,289,956	14.3%	\$25,799,311	85.7%	\$0	0.0%
Utah	\$415,578	8.3%	\$3,615,100	72.2%	\$975,000	19.5%
Vermont	\$1,005,339	6.4%	\$0	0.0%	\$14,745,550	93.6%
Virginia	\$2,814,009	20.1%	\$11,215,781	79.9%	\$0	0.0%
Washington	\$2,109,133	6.9%	\$10,301,827	33.8%	\$18,103,065	59.3%
West Virginia	\$3,026,605	33.7%	\$3,938,506	43.9%	\$2,005,557	22.4%
Wisconsin	\$6,564,418	8.5%	\$18,006,728	23.2%	\$53,023,484	68.3%
Wyoming	\$744,539	16.5%	\$2,209,849	49.1%	\$1,550,000	34.4%
ITCA*	\$73,729	100.0%	\$0	0.0%	\$0	0.0%
Navajo	\$340,632	100.0%	\$0	0.0%	\$0	0.0%
N. Arapaho	\$105,798	100.0%	\$0	0.0%	\$0	0.0%
Amer. Samoa	\$132,094	100.0%	\$0	0.0%	\$0	0.0%
Guam	\$453,500	100.0%	\$0	0.0%	\$0	0.0%
Puerto Rico	\$405,670	0.0%	\$0	0.0%	\$0	0.0%
N. Mariana Isles	\$354,105	100.0%	\$0	0.0%	\$0	0.0%
Virgin Islands	\$445,248	100.0%	\$0	0.0%	\$0	0.0%
<b>Totals</b>	<b>\$152,908,872</b>		<b>\$406,870,532</b>		<b>\$358,210,427</b>	
% of Prog. Funding	16.7%		44.3%		39.0%	
Number of Grantees recieving funds	58		46		33	



2013 Total *	2013 Total Unit Prod.
\$6,230,495	376
\$60,472,690	3,104
\$7,722,041	753
\$5,571,857	461
\$37,980,484	12,532
\$19,669,969	2,979
\$1,000,092	194
\$2,898,641	390
\$4,039,000	924
\$10,825,416	1,388
\$6,799,639	825
\$168,025	42
\$9,558,391	1,070
\$70,369,822	6,364
\$20,286,955	2,208
\$17,339,738	877
\$6,660,517	1,053
\$9,479,846	788
\$7,296,092	852
\$3,856,591	303
\$25,296,493	2,981
\$52,614,575	30,584
\$20,565,468	1,918
\$20,493,441	2,792
\$4,408,280	627
\$7,684,942	850
\$8,351,264	3,000
\$3,831,397	562
\$4,557,921	776
\$7,500,391	1,700
\$17,787,690	1,780
\$2,760,967	408
\$53,190,469	7,848
\$25,812,396	3,766
\$6,731,763	778
\$85,585,795	8,547
\$3,523,225	490
\$20,012,254	1,266
\$28,569,238	986
\$9,565,068	990
\$7,132,336	569
\$505,656	74
\$4,512,390	252
\$30,089,267	4,244
\$5,005,678	521
\$15,750,889	1,613
\$14,029,790	368
\$30,514,025	2,367
\$8,970,668	1,792
\$77,594,630	6,762
\$4,504,388	563
\$73,729	10
\$340,632	32
\$105,798	16
\$132,094	65
\$453,500	0
\$405,670	50
\$354,105	65
\$445,248	0
<b>\$917,989,831</b>	<b>129,495</b>
100.0%	
59	

\*2013 Total includes DOE, LIHEAP, and  
Other funding  
\*Inter-Tribal Council of Arizona



## FUNDING SURVEY PY2013

### Weatherization Assistance Program Funding Survey

**Table 4:**  
DOE  
Funding Levels  
2003–2013

Grantee	2003	2004	2005	2006	2007	2008
Alabama	\$2,437,309	\$2,407,556	\$2,417,993	\$2,724,123	\$2,154,306	\$2,396,413
Alaska	\$1,803,923	\$1,785,101	\$1,687,616	\$1,741,472	\$1,631,367	\$1,540,077
Arizona	\$1,114,618	\$1,501,783	\$1,364,764	\$1,337,983	\$1,016,592	\$1,128,755
Arkansas	\$1,999,542	\$2,070,568	\$2,079,513	\$2,202,800	\$1,853,518	\$2,061,017
California	\$6,129,270	\$6,366,600	\$8,322,844	\$7,057,123	\$5,243,615	\$5,870,561
Colorado	\$5,384,059	\$5,479,996	\$5,431,532	\$6,520,510	\$5,022,676	\$5,454,329
Connecticut	\$2,463,509	\$2,517,795	\$2,517,795	\$2,759,107	\$2,242,994	\$2,495,304
Delaware	\$598,017	\$574,894	\$577,217	\$612,727	\$518,509	\$731,420
Dist. Columbia	\$886,745	\$651,868	\$651,868	\$712,764	\$735,358	\$836,659
Florida	\$1,923,719	\$1,965,864	\$2,592,639	\$1,752,523	\$1,948,403	\$4,669,400
Georgia	\$2,877,362	\$2,928,214	\$2,940,956	\$3,339,105	\$2,982,035	\$2,914,609
Hawaii	\$201,583	\$204,993	\$217,077	\$217,160	\$282,379	\$282,379
Idaho	\$1,959,146	\$1,982,038	\$1,982,038	\$1,961,577	\$2,445,646	\$1,964,431
Illinois	\$13,605,888	\$13,910,793	\$14,105,292	\$14,057,622	\$12,384,751	\$13,784,473
Indiana	\$6,436,551	\$6,436,551	\$5,589,066	\$6,762,132	\$6,520,687	\$6,710,872
Iowa	\$4,902,155	\$4,989,424	\$5,011,292	\$5,153,879	\$4,458,829	\$4,966,077
Kansas	\$2,545,456	\$2,283,766	\$2,706,214	\$2,706,214	\$2,264,099	\$2,518,837
Kentucky	\$4,441,020	\$4,405,564	\$4,519,996	\$4,761,929	\$4,039,827	\$4,550,294
Louisiana	\$1,701,665	\$1,731,371	\$1,738,815	\$1,997,309	\$1,550,758	\$2,735,655
Maine	\$3,014,901	\$3,068,227	\$3,081,589	\$3,240,063	\$2,744,008	\$3,235,743
Maryland	\$1,558,028	\$2,816,090	\$2,594,247	\$2,194,851	\$2,331,533	\$2,904,363
Massachusetts	\$6,254,090	\$6,548,606	\$6,964,249	\$6,944,036	\$5,850,524	\$6,615,129
Michigan	\$15,582,631	\$15,190,413	\$15,257,442	\$15,446,624	\$13,564,024	\$15,118,849
Minnesota	\$9,882,194	\$9,089,026	\$10,181,970	\$10,104,169	\$8,159,658	\$9,989,081
Mississippi	\$1,620,281	\$1,648,503	\$1,655,581	\$1,850,660	\$1,476,791	\$1,640,948
Missouri	\$5,898,363	\$6,003,549	\$6,029,907	\$6,368,172	\$5,364,017	\$5,975,410
Montana	\$2,475,828	\$2,530,390	\$2,623,349	\$2,254,188	\$2,254,188	\$2,507,786
Nebraska	\$2,578,559	\$2,511,448	\$2,504,834	\$2,611,397	\$2,272,477	\$2,482,462
Nevada	\$1,001,956	\$851,412	\$807,590	\$1,063,580	\$862,389	\$831,718
New Hampshire	\$1,482,885	\$1,508,657	\$1,515,114	\$1,605,171	\$1,351,697	\$1,501,762
New Jersey	\$5,259,219	\$5,345,038	\$5,125,246	\$5,366,959	\$4,560,095	\$5,078,993
New Mexico	\$1,396,464	\$1,920,897	\$1,711,175	\$1,857,690	\$1,714,483	\$1,714,483
New York	\$20,086,894	\$20,259,998	\$20,259,998	\$21,818,047	\$18,009,524	\$20,100,000
North Carolina	\$4,086,054	\$4,158,644	\$4,176,834	\$4,645,490	\$3,717,293	\$4,139,225
North Dakota	\$2,453,738	\$2,507,804	\$2,507,804	\$2,589,151	\$2,234,117	\$4,500,000
Ohio	\$15,030,102	\$13,801,761	\$12,710,212	\$15,501,009	\$13,201,253	\$14,626,946
Oklahoma	\$2,546,639	\$2,591,542	\$2,602,794	\$2,831,669	\$2,318,528	\$3,399,575
Oregon	\$2,838,308	\$3,469,439	\$2,921,655	\$2,824,212	\$4,406,949	\$2,808,354
Pennsylvania	\$14,448,500	\$14,707,466	\$14,772,357	\$15,101,584	\$13,132,955	\$14,638,184
Rhode Island	\$1,170,171	\$1,156,210	\$1,161,108	\$1,253,702	\$1,037,381	\$1,150,982
South Carolina	\$1,745,053	\$1,775,540	\$1,783,179	\$1,982,643	\$1,590,182	\$1,780,924
South Dakota	\$1,883,806	\$1,916,788	\$1,925,053	\$1,991,514	\$2,046,721	\$3,020,139
Tennessee	\$4,108,597	\$4,181,594	\$4,199,886	\$4,534,180	\$3,737,777	\$8,868,482
Texas	\$5,477,906	\$5,599,993	\$5,599,993	\$6,607,385	\$4,981,976	\$5,549,413
Utah	\$2,041,346	\$2,077,161	\$2,086,136	\$2,161,298	\$1,859,403	\$2,067,579
Vermont	\$1,256,227	\$1,277,921	\$1,283,358	\$1,353,926	\$1,272,118	\$1,272,118
Virginia	\$3,931,656	\$3,696,566	\$4,751,384	\$4,703,940	\$4,344,862	\$3,997,999
Washington	\$4,567,248	\$4,560,166	\$4,560,166	\$4,688,820	\$4,406,949	\$5,033,942
West Virginia	\$3,155,983	\$3,211,847	\$3,225,843	\$3,320,985	\$2,872,199	\$3,196,901
Wisconsin	\$9,236,620	\$8,568,935	\$10,488,948	\$9,431,346	\$8,170,794	\$8,608,452
Wyoming	\$1,154,664	\$1,174,532	\$1,179,511	\$1,302,898	\$991,836	\$1,128,920
ITCA*	n/a	n/a	n/a	n/a	n/a	\$88,741
Navajo	\$1,176,405	\$186,724	\$187,537	\$362,433	\$289,645	\$321,735
N. Arapaho	n/a	n/a	n/a	n/a	n/a	n/a
American Samoa	n/a	n/a	n/a	n/a	n/a	n/a
Guam	n/a	n/a	n/a	n/a	n/a	n/a
Puerto Rico	n/a	n/a	n/a	n/a	n/a	n/a
N. Mariana Isles	n/a	n/a	n/a	n/a	n/a	n/a
Virgin Islands	n/a	n/a	n/a	n/a	n/a	n/a
<b>Totals</b>	<b>\$223,812,853</b>	<b>\$224,107,626</b>	<b>\$228,890,576</b>	<b>\$238,291,851</b>	<b>\$206,424,695</b>	<b>\$237,506,900</b>
% of Prog. Funding	37.4%	37.2%	35.8%	32.6%	30.2%	24.2%
Number of Grantees receiving funds	52	52	52	52	52	53

**Note:** n/a indicates that the entity was not a Grantee at the time.

**Note:** Figures in red in the 2012 column represent amended figures in 2013 Survey.





2009	2010	2011	2012	2013	% change 2012 to 2013	2013 DOE Unit Production	Production Type
\$5,458,962	\$1,882,352	\$2,018,560	\$3,354,516	\$5,230,495	55.9%	256	Unduplicated = DOE Funds only
\$2,553,915	\$1,329,537	\$1,287,597	\$360,480	\$1,322,690	266.9%	152	Unduplicated = DOE Funds only
\$3,670,756	\$952,279	\$2,660,385	\$1,925,272	\$487,020	-74.7%	94	Blended w/ LIHEAP & Other Funds
\$3,556,554	\$1,622,103	\$1,570,573	\$2,013,498	\$1,615,506	-19.8%	461	Blended w/ LIHEAP Funds
\$14,563,348	\$4,918,739	\$4,758,371	\$8,072,792	\$0	-100.0%	0	2013 funds being used in 2014
\$4,086,626	\$4,307,729	\$7,964,794	\$8,130,764	\$4,519,633	-44.4%	747	Unduplicated = DOE Funds only
\$5,315,348	\$1,972,276	\$1,909,269	\$1,319,737	\$500,092	-62.1%	94	Unduplicated = DOE Funds only
\$1,183,372	\$460,428	\$631,401	\$2,268,203	\$452,837	-80.0%	45	Unduplicated = DOE Funds only
\$998,679	\$519,060	\$404,664	\$488,759	\$539,000	10.3%	83	Unduplicated = DOE Funds only
\$9,885,233	\$1,484,081	\$6,081,202	\$6,081,202	\$709,416	-88.3%	83	Unduplicated = DOE Funds only
\$8,294,558	\$2,282,504	\$3,882,806	\$3,642,329	\$2,276,474	-37.5%	7	Unduplicated = DOE Funds only
\$393,559	\$169,266	\$170,561	\$216,041	\$168,025	-22.2%	42	Unduplicated = DOE Funds only
\$3,366,002	\$1,558,041	\$1,508,611	\$1,388,688	\$1,551,391	11.7%	234	Blended w/ LIHEAP & Other Funds
\$24,070,095	\$10,844,851	\$10,844,851	\$6,581,258	\$13,156,546	99.9%	2710	Blended w/ LIHEAP & Other Funds
\$7,092,942	\$5,137,920	\$4,971,150	\$5,467,613	\$5,104,457	-6.6%	528	Blended w/ LIHEAP Funds
\$8,578,634	\$3,918,674	\$8,729,840	\$8,594,994	\$4,585,167	-46.7%	416	Blended w/ LIHEAP & Other Funds
\$5,001,886	\$1,988,469	\$1,924,929	\$1,774,148	\$1,863,608	5.0%	194	Blended w/ LIHEAP & Other Funds
\$7,640,899	\$5,070,670	\$4,477,261	\$5,430,388	\$3,177,017	-41.5%	788	Blended w/ LIHEAP Funds
\$3,623,154	\$1,340,633	\$1,708,765	\$1,230,585	\$529,968	-56.9%	52	Blended w/ LIHEAP Funds
\$4,924,673	\$2,415,842	\$1,775,676	\$2,069,591	\$651,694	-68.5%	66	Blended w/ LIHEAP Funds
\$5,280,336	\$2,083,502	\$4,649,017	\$6,363,895	\$6,767,265	6.3%	28	Blended w/ LIHEAP & Other Funds
\$11,794,866	\$5,137,610	\$4,970,851	\$5,194,887	\$5,064,575	-2.5%	893	Unduplicated = DOE Funds only
\$25,949,859	\$11,249,465	\$16,922,668	\$12,147,503	\$11,913,125	-1.9%	1618	Blended w/ LIHEAP Funds
\$15,972,943	\$9,865,770	\$11,341,776	\$3,220,557	\$4,924,869	52.9%	724	Blended w/ LIHEAP & Other Funds
\$3,744,293	\$1,290,592	\$1,249,929	\$574,589	\$249,986	-56.5%	28	Unduplicated = DOE Funds only
\$11,566,101	\$4,703,704	\$12,686,850	\$10,368,001	\$3,440,907	-66.8%	850	Blended w/ LIHEAP & Other Funds
\$3,760,263	\$1,987,207	\$1,923,710	\$2,654,881	\$676,220	-74.5%	1126	Blended w/ LIHEAP & Other Funds
\$4,372,276	\$1,964,240	\$1,901,497	\$1,018,709	\$380,299	-62.7%	44	Unduplicated = DOE Funds only
\$2,547,725	\$662,859	\$684,414	\$604,317	\$655,441	8.5%	105	Unduplicated = DOE Funds only
\$2,533,628	\$1,193,071	\$1,387,808	\$1,277,000	\$1,186,108	-7.1%	203	Blended w/ LIHEAP & Other Funds
\$10,124,722	\$5,644,240	\$3,869,812	\$6,287,572	\$773,962	-87.7%	113	Unduplicated = DOE Funds only
\$2,927,997	\$1,506,127	\$1,326,143	\$1,688,642	\$889,637	-47.3%	97	Blended w / Other Funds
\$42,500,000	\$15,786,616	\$15,270,806	\$14,130,828	\$15,792,155	11.8%	7848	Blended w/ LIHEAP Funds
\$8,057,022	\$3,249,190	\$6,423,435	\$2,276,750	\$2,065,144	-9.3%	2198	Blended w/ LIHEAP Funds
\$1,664,727	\$1,969,451	\$1,906,536	\$2,948,642	\$1,963,153	-33.4%	182	Blended w / Other Funds
\$25,174,465	\$30,295,459	\$26,465,436	\$14,089,246	\$10,763,252	-23.6%	4311	Blended w/ LIHEAP Funds
\$5,150,319	\$2,029,472	\$1,705,606	\$1,564,375	\$2,023,225	29.3%	271	Blended w/ LIHEAP Funds
\$4,563,299	\$2,222,843	\$2,800,081	\$2,214,107	\$2,796,762	26.3%	212	Blended w/ LIHEAP & Other Funds
\$25,400,552	\$12,013,482	\$11,144,041	\$16,882,381	\$2,228,808	-86.8%	224	Unduplicated = DOE Funds only
\$2,022,878	\$916,134	\$887,744	\$813,840	\$232,526	-71.4%	46	Blended w/ LIHEAP Funds
\$4,466,899	\$1,393,416	\$1,612,777	\$927,855	\$1,382,018	48.9%	149	Unduplicated = DOE Funds only
\$1,513,071	\$2,013,071	\$1,513,071	\$1,465,115	\$505,656	-65.5%	74	Unduplicated = DOE Funds only
\$3,864,806	\$1,834,789	\$11,444,417	\$4,512,390	\$4,512,390	0.0%	252	Unduplicated = DOE Funds only
\$19,793,889	\$8,025,453	\$9,070,724	\$4,155,146	\$4,289,956	3.2%	374	Unduplicated = DOE Funds only
\$3,818,075	\$1,638,680	\$158,667	\$730,045	\$415,578	-43.1%	347	Blended w/ LIHEAP & Other Funds
\$2,021,240	\$1,012,458	\$980,912	\$447,003	\$1,005,339	124.9%	113	Unduplicated = DOE Funds only
\$8,025,937	\$3,148,212	\$3,046,661	\$0	\$2,814,009	100.0%	259	Unduplicated = DOE Funds only
\$7,243,701	\$3,570,881	\$3,455,476	\$3,445,476	\$2,109,133	-38.8%	336	Blended w/ LIHEAP & Other Funds
\$4,817,624	\$2,525,991	\$2,444,834	\$4,454,927	\$3,026,605	-32.1%	425	Blended w/ LIHEAP & Other Funds
\$14,966,407	\$6,726,647	\$7,419,096	\$6,017,339	\$6,564,418	9.1%	6762	Blended w/ LIHEAP & Other Funds
\$1,281,280	\$852,525	\$826,080	\$693,657	\$744,539	7.3%	102	Blended w/ LIHEAP & Other Funds
\$0	\$69,412	\$67,245	\$61,729	\$73,729	19.4%	10	Unduplicated = DOE Funds only
\$703,848	\$242,391	\$234,760	\$245,277	\$340,632	38.9%	32	Unduplicated = DOE Funds only
\$144,840	\$79,614	\$77,145	\$94,450	\$105,798	12.0%	16	Unduplicated = DOE Funds only
\$196,784	\$283,860	\$215,257	\$151,424	\$132,094	-12.8%	65	Unduplicated = DOE Funds only
\$198,908	\$357,856	\$513,233	\$422,425	\$453,500	7.4%	0	n/a
\$452,558	\$647,129	\$627,557	\$0	\$405,670	100.0%	50	Unduplicated = DOE Funds only
\$198,908	\$155,635	\$352,821	\$280,000	\$354,105	26.5%	65	Unduplicated = DOE Funds only
\$200,481	\$161,976	\$431,420	\$413,587	\$445,248	7.7%	0	n/a
<b>\$413,276,722</b>	<b>\$204,686,484</b>	<b>\$243,291,578</b>	<b>\$205,249,424</b>	<b>\$152,908,872</b>	<b>-25.5%</b>	<b>37,604</b>	
34.7%	24.5%	26.33%	22.28%	16.66%			
58	59	59	57	58			

\*Inter-Tribal Council of Arizona



## FUNDING SURVEY PY2013

### Weatherization Assistance Program Funding Survey

**Table 5:**  
**LIHEAP**  
**Funding Levels**  
**2003–2013**

Grantee	2003	2004	2005	2006	2007	2008
Alabama	\$678,523	\$730,457	\$768,902	\$830,503	\$830,503	\$830,503
Alaska	\$1,000,000	\$1,000,000	\$600,000	\$600,000	\$500,000	\$500,000
Arizona	\$1,230,360	\$1,315,342	\$1,105,926	\$2,134,528	\$1,580,429	\$3,897,110
Arkansas	\$1,849,894	\$1,770,971	\$1,614,225	\$1,906,358	\$2,402,361	\$1,678,862
California	\$20,359,653	\$22,198,519	\$21,651,700	\$37,566,845	\$23,784,171	\$24,170,162
Colorado	\$4,559,095	\$4,268,185	\$4,726,413	\$5,163,631	\$4,958,210	\$4,206,264
Connecticut	\$0	\$0	\$0	\$0	\$0	\$0
Delaware	\$140,000	\$400,000	\$500,000	\$500,000	\$500,000	\$500,000
Dist. Columbia	\$669,019	\$946,798	\$870,208	\$396,850	\$940,377	\$2,154,000
Florida	\$3,482,696	\$3,671,442	\$8,579,445	\$5,205,190	\$4,157,225	\$15,000,000
Georgia	\$2,425,655	\$2,677,363	\$2,677,363	\$4,550,279	\$2,544,548	\$2,544,548
Hawaii	\$0	\$0	\$0	\$0	\$0	\$0
Idaho	\$1,598,068	\$1,496,410	\$1,560,092	\$1,961,577	\$2,445,646	\$2,008,734
Illinois	\$15,040,000	\$14,150,000	\$16,313,465	\$22,900,000	\$17,912,660	\$27,633,080
Indiana	\$4,831,420	\$4,740,931	\$4,660,565	\$4,740,931	\$5,496,370	\$5,496,372
Iowa	\$5,327,400	\$5,634,440	\$5,184,900	\$5,185,517	\$5,451,471	\$5,514,361
Kansas	\$2,258,850	\$2,145,908	\$2,143,221	\$2,625,090	\$2,501,390	\$2,497,970
Kentucky	\$3,449,257	\$2,918,953	\$4,159,820	\$5,522,842	\$5,288,663	\$7,407,351
Louisiana	\$1,982,223	\$0	\$2,140,743	\$2,700,209	\$2,700,209	\$2,315,035
Maine	\$4,815,133	\$4,190,211	\$5,039,553	\$5,673,853	\$3,923,035	\$4,671,203
Maryland	\$750,000	\$726,779	\$772,916	\$2,274,758	\$1,225,241	\$750,000
Massachusetts	\$5,411,445	\$6,000,000	\$6,952,067	\$8,448,021	\$8,500,000	\$8,500,000
Michigan	\$7,000,000	\$8,500,000	\$6,000,000	\$3,000,000	\$0	\$3,500,000
Minnesota	\$6,699,352	\$2,858,563	\$10,873,446	\$10,873,466	\$6,204,936	\$7,948,075
Mississippi	\$0	\$0	\$0	\$0	\$0	\$0
Missouri	\$0	\$0	\$0	\$2,000,000	\$0	\$1,200,000
Montana	\$2,939,299	\$1,881,348	\$2,695,829	\$2,835,653	\$2,835,653	\$3,434,701
Nebraska	\$2,279,032	\$2,710,661	\$2,282,876	\$4,538,062	\$2,273,563	\$2,709,263
Nevada	\$0	\$0	\$0	\$0	\$190,495	\$689,541
New Hampshire	\$500,000	\$500,000	\$500,000	\$500,000	\$500,000	\$750,000
New Jersey	\$3,607,000	\$3,607,000	\$3,607,000	\$5,607,000	\$5,607,000	\$6,279,345
New Mexico	\$1,050,000	\$1,200,000	\$1,488,862	\$900,000	\$1,402,056	\$1,402,056
New York	\$31,400,000	\$33,959,080	\$33,387,040	\$33,487,410	\$35,000,000	\$47,700,000
North Carolina	\$5,451,075	\$4,423,779	\$4,743,976	\$9,945,915	\$6,104,376	\$8,180,710
North Dakota	\$1,891,639	\$1,862,275	\$2,107,079	\$2,000,000	\$2,120,004	\$1,000,000
Ohio	\$15,165,914	\$15,825,739	\$16,917,856	\$21,243,239	\$21,243,202	\$26,974,686
Oklahoma	\$975,268	\$1,141,834	\$1,081,926	\$1,260,717	\$1,145,902	\$944,998
Oregon	\$3,779,889	\$3,954,120	\$3,715,029	\$3,529,277	\$6,223,554	\$4,318,254
Pennsylvania	\$18,038,100	\$19,015,600	\$19,990,900	\$27,991,800	\$28,595,563	\$34,595,700
Rhode Island	\$1,683,500	\$1,600,000	\$1,900,000	\$2,502,594	\$2,537,594	\$2,366,503
South Carolina	\$1,201,006	\$1,802,597	\$1,802,429	\$1,997,754	\$1,997,754	\$2,038,485
South Dakota	\$1,542,561	\$1,542,561	\$1,542,561	\$1,588,837	\$1,469,871	\$2,037,522
Tennessee	\$1,871,231	\$2,509,698	\$2,151,351	\$2,703,255	\$2,249,878	\$8,183,623
Texas	\$7,090,478	\$8,389,123	\$7,703,606	\$12,032,253	\$6,753,806	\$7,430,750
Utah	\$2,066,000	\$1,885,000	\$3,312,300	\$3,355,050	\$2,580,000	\$7,032,600
Vermont	\$450,000	\$0	\$0	\$0	\$0	\$0
Virginia	\$5,624,981	\$5,118,717	\$6,412,071	\$10,890,722	\$6,036,145	\$6,554,754
Washington	\$4,215,562	\$7,040,691	\$6,699,290	\$6,699,290	\$6,223,553	\$5,033,942
West Virginia	\$2,388,600	\$2,390,263	\$2,519,804	\$3,572,742	\$2,649,041	\$4,516,308
Wisconsin	\$7,621,140	\$9,704,311	\$10,601,223	\$14,475,619	\$10,528,759	\$13,280,752
Wyoming	\$1,084,625	\$1,292,527	\$1,292,527	\$2,246,886	\$0	\$400,000
ITCA*	n/a	n/a	n/a	n/a	n/a	\$0
Navajo	\$0	\$0	\$0	\$0	\$0	\$0
N. Arapaho	n/a	n/a	n/a	n/a	n/a	n/a
Amer. Samoa	n/a	n/a	n/a	n/a	n/a	n/a
Guam	n/a	n/a	n/a	n/a	n/a	n/a
Puerto Rico	n/a	n/a	n/a	n/a	n/a	n/a
N. Mariana Isles	n/a	n/a	n/a	n/a	n/a	n/a
Virgin Islands	n/a	n/a	n/a	n/a	n/a	n/a
<b>Totals</b>	<b>\$219,474,943</b>	<b>\$225,698,196</b>	<b>\$247,350,505</b>	<b>\$312,664,523</b>	<b>\$260,115,214</b>	<b>\$332,778,124</b>
% of Prog. Funding	36.6%	37.5%	38.7%	43.0%	38.3%	34.6%
Number of Grantees receiving funds	46	44	45	46	44	47

**Note:** n/a indicates that the entity was not a Grantee at the time

**Note:** Figures in red in the 2012 column represent amended figures in 2013 Survey



\*Inter-Tribal Council of Arizona



## FUNDING SURVEY PY2013

### Weatherization Assistance Program Funding Survey

**Table 6:**  
Other Funding Levels  
2003 –2013

Grantee	2003	2004	2005	2006	2007	2008
Alabama	\$0	\$310,600	\$275,000	\$275,000	\$230,000	\$225,000
Alaska	\$3,000,000	\$3,000,000	\$2,832,000	\$3,000,000	\$4,000,000	\$200,000,000
Arizona	\$1,000,000	\$1,000,000	\$1,000,000	\$1,500,000	\$4,200,000	\$4,200,000
Arkansas	\$2,350,000	\$0	\$0	\$0	\$407,437	\$1,629,724
California	\$0	\$0	\$0	\$0	\$0	\$0
Colorado	\$2,689,149	\$2,689,149	\$2,506,000	\$2,382,000	\$2,290,000	\$2,391,000
Connecticut	\$3,899,000	\$3,899,000	\$0	\$4,784,332	\$4,700,000	\$6,510,000
Delaware	\$375,000	\$282,893	\$380,000	\$0	\$367,000	\$367,000
Dist. Columbia	\$1,100,000	\$1,100,000	\$749,216	\$3,545,000	\$3,545,000	\$6,745,600
Florida	\$2,000,000	\$0	\$100,000	\$1,000,000	\$3,000,000	\$0
Georgia	\$800,000	\$800,000	\$800,000	\$2,443,285	\$1,900,000	\$2,500,000
Hawaii	\$0	\$0	\$0	\$0	\$0	\$0
Idaho	\$651,296	\$1,394,299	\$2,357,437	\$1,961,577	\$2,445,646	\$2,328,948
Illinois	\$7,200,000	\$7,200,000	\$7,200,000	\$7,500,000	\$7,500,000	\$10,882,516
Indiana	\$0	\$1,900,000	\$2,000,000	\$2,000,000	\$1,966,000	\$2,400,000
Iowa	\$2,447,970	\$3,135,970	\$4,814,742	\$5,088,102	\$4,823,114	\$4,833,117
Kansas	\$0	\$0	\$0	\$0	\$2,000,000	\$0
Kentucky	\$0	\$0	\$0	\$0	\$0	\$0
Louisiana	\$0	\$0	\$0	\$0	\$0	\$0
Maine	\$0	\$300,000	\$0	\$0	\$0	\$0
Maryland	\$525,019	\$724,532	\$2,094,243	\$1,549,747	\$0	\$1,900,000
Massachusetts	\$17,100,000	\$18,038,878	\$21,129,367	\$21,000,000	\$20,400,000	\$21,000,000
Michigan	\$0	\$0	\$4,215,000	\$4,500,000	\$10,425,000	\$10,425,000
Minnesota	\$1,807,839	\$2,455,866	\$2,207,451	\$2,290,000	\$2,214,871	\$2,835,336
Mississippi	\$0	\$2,167,925	\$0	\$0	\$0	\$0
Missouri	\$1,765,000	\$1,765,000	\$2,023,000	\$2,631,714	\$2,908,869	\$2,181,186
Montana	\$1,557,941	\$1,559,060	\$1,923,903	\$2,257,636	\$2,257,636	\$3,359,682
Nebraska	\$0	\$0	\$0	\$0	\$0	\$0
Nevada	\$3,352,637	\$2,621,272	\$2,803,420	\$3,394,414	\$3,857,000	\$3,648,815
New Hampshire	\$1,091,164	\$1,370,808	\$996,286	\$2,117,349	\$2,441,012	\$2,954,144
New Jersey	\$0	\$0	\$0	\$0	\$0	\$0
New Mexico	\$400,000	\$695,915	\$2,701,069	\$823,000	\$963,453	\$823,453
New York	\$10,670,000	\$7,000,000	\$7,000,000	\$10,000,000	\$10,000,000	\$10,000,000
North Carolina	\$0	\$0	\$0	\$0	\$0	\$0
North Dakota	\$0	\$0	\$0	\$0	\$0	\$0
Ohio	\$20,209,460	\$18,976,875	\$19,608,322	\$19,891,983	\$26,776,196	\$20,000,000
Oklahoma	\$15,000	\$15,000	\$3,000	\$1,000,000	\$500,000	\$250,000
Oregon	\$7,976,123	\$7,976,123	\$7,462,152	\$7,462,152	\$7,200,000	\$6,890,500
Pennsylvania	\$0	\$0	\$0	\$0	\$0	\$0
Rhode Island	\$700,000	\$600,000	\$650,000	\$957,303	\$1,853,230	\$1,251,316
South Carolina	\$36,000	\$54,000	\$49,352	\$0	\$0	\$50,000
South Dakota	\$0	\$0	\$0	\$0	\$0	\$0
Tennessee	\$0	\$0	\$0	\$0	\$0	\$0
Texas	\$10,957,070	\$2,203,235	\$1,816,165	\$2,049,865	\$2,182,542	\$901,531
Utah	\$1,077,071	\$336,816	\$322,101	\$466,717	\$938,012	\$1,188,836
Vermont	\$3,786,098	\$4,704,406	\$5,991,917	\$5,983,363	\$7,361,613	\$7,943,609
Virginia	\$158,090	\$2,000,000	\$0	\$0	\$0	\$0
Washington	\$8,242,729	\$8,242,729	\$8,460,000	\$7,200,000	\$9,000,000	\$9,000,000
West Virginia	\$225,000	\$150,000	\$0	\$499,650	\$1,748,650	\$604,750
Wisconsin	\$32,229,734	\$39,616,460	\$41,101,045	\$41,031,647	\$50,972,792	\$46,310,037
Wyoming	\$0	\$0	\$125,000	\$524,088	\$206,358	\$1,768,277
ITCA*	n/a	n/a	n/a	n/a	n/a	n/a
Navajo	\$0	\$0	\$0	\$0	\$0	\$0
N. Arapaho	n/a	n/a	n/a	n/a	n/a	n/a
Amer. Samoa	n/a	n/a	n/a	n/a	n/a	n/a
Guam	n/a	n/a	n/a	n/a	n/a	n/a
Puerto Rico	n/a	n/a	n/a	n/a	n/a	n/a
N. Mariana Isles	n/a	n/a	n/a	n/a	n/a	n/a
Virgin Islands	n/a	n/a	n/a	n/a	n/a	n/a
<b>Totals</b>	<b>\$151,394,390</b>	<b>\$150,286,811</b>	<b>\$157,697,188</b>	<b>\$173,109,924</b>	<b>\$207,581,430</b>	<b>\$400,299,377</b>
% of Prog. Funding	25.3%	24.9%	24.6%	23.8%	30.6%	40.8%
Number of Grantees receiving funds	33	35	33	33	35	35

**Note:** n/a indicates that the entity was not a Grantee at the time.

**Note:** Figures in red in the 2012 column represent amended figures in 2013 Survey.





2009	2010	2011	2012	2013	% change 2012 to 2013	2013 Other Production	Production Type
\$350,000	\$350,000	\$0	\$0	\$0	0.0%	0	n/a
\$0	\$36,000,000	\$30,000,000	\$58,000,000	\$58,150,000	0.3%	2,832	Unduplicated
\$2,600,000	\$2,600,000	\$2,600,000	\$3,500,000	\$3,500,000	0.0%	45	Unduplicated
\$0	\$0	\$0	\$0	\$0	0.0%	0	n/a
\$0	\$0	\$0	\$0	\$0	0.0%	0	n/a
\$2,459,660	\$2,559,660	\$3,200,000	\$5,422,194	\$10,059,536	85.5%	1391	Unduplicated
\$7,500,000	\$750,000	\$0	\$0	\$500,000	100.0%	100	Unduplicated
\$1,778,800	\$500,000	\$1,125,000	\$0	\$1,300,000	100.0%	170	Unduplicated
\$4,643,600	\$4,543,959	\$980,996	\$0	\$2,000,000	100.0%	465	Unduplicated
\$0	\$0	\$0	\$0	\$0	0.0%	0	n/a
\$2,400,000	\$2,257,690	\$1,750,000	\$1,750,000	\$1,750,000	0.0%	521	Unduplicated
\$0	\$500,000	\$0	\$0	\$0	0.0%	0	n/a
\$2,414,795	\$1,805,050	\$1,879,200	\$1,949,000	\$2,949,000	51.3%	82	Unduplicated
\$7,500,000	\$7,500,000	\$13,700,000	\$26,205,079	\$33,941,505	29.5%	468	Unduplicated
\$0	\$0	\$0	\$0	\$924,925	100.0%	102	Unduplicated
\$4,973,835	\$5,062,500	\$8,561,826	\$5,303,450	\$5,301,910	0.0%	0	Supplemented DOE and LIHEAP
\$0	\$0	\$60,720	\$28,610	\$35,997	25.8%	0	Supplemented DOE and LIHEAP
\$0	\$0	\$0	\$0	\$0	0.0%	0	n/a
\$0	\$2,180,234	\$0	\$644,000	\$325,835	-49.4%	0	n/a
\$0	\$0	\$0	\$1,160,890	\$1,113,215	-4.1%	27	Unduplicated
\$1,618,054	\$3,681,946	\$0	\$15,000,000	\$17,529,228	16.9%	2,697	Unduplicated
\$29,000,000	\$30,000,000	\$38,000,000	\$36,600,000	\$39,050,000	6.7%	18924	Unduplicated
\$8,500,000	\$10,000,000	\$10,000,000	\$0	\$0	0.0%	0	n/a
\$2,000,000	\$2,920,002	\$2,720,555	\$12,053,859	\$1,766,458	-85.3%	0	Supplemented DOE and LIHEAP
\$0	\$0	\$0	\$0	\$0	0.0%	0	n/a
\$2,957,892	\$2,952,972	\$4,069,008	\$4,341,016	\$3,244,035	-25.3%	0	Supplemented DOE units
\$2,442,253	\$2,242,181	\$2,286,339	\$2,729,600	\$3,027,368	10.9%	326	Unduplicated
\$0	\$0	\$0	\$0	\$169,701	100.0%	34	Unduplicated
\$2,485,444	\$3,082,541	\$2,968,566	\$3,583,013	\$3,426,780	-4.4%	581	Unduplicated
\$0	\$0	\$0	\$0	\$5,814,283	100.0%	1,353	Unduplicated
\$0	\$0	\$0	\$0	\$0	0.0%	0	n/a
\$1,850,033	\$2,048,178	\$2,208,653	\$1,793,733	\$503,330	-71.9%	91	Unduplicated
\$10,000,000	\$0	\$0	\$0	\$0	0.0%	0	n/a
\$0	\$0	\$0	\$0	\$0	0.0%	0	n/a
\$0	\$0	\$0	\$0	\$20,200	100.0%	5	Unduplicated
\$0	\$0	\$0	\$0	\$53,103,421	100.0%	2,021	Unduplicated
\$400,000	\$132,568	\$250,000	\$250,000	\$0	-100.0%	0	n/a
\$7,100,000	\$8,361,313	\$8,402,253	\$10,158,860	\$12,418,502	22.2%	909	Unduplicated
\$0	\$1,500,000	\$1,000,000	\$0	\$0	0.0%	0	n/a
\$2,759,601	\$1,686,089	\$5,601,129	\$4,508,445	\$5,882,542	30.5%	0	Supplemented LIHEAP units
\$100,000	\$0	\$0	\$25,566	\$0	-100.0%	0	n/a
\$0	\$0	\$0	\$0	\$0	0.0%	0	n/a
\$0	\$0	\$0	\$0	\$0	0.0%	0	n/a
\$1,082,873	\$0	\$0	\$0	\$0	0.0%	0	n/a
\$1,004,643	\$750,000	\$1,065,876	\$975,000	\$975,000	0.0%	0	Supplemented DOE and LIHEAP
\$4,593,774	\$4,602,033	\$7,000,000	\$7,000,000	\$14,745,550	110.7%	1,500	Unduplicated
\$0	\$85,000	\$85,000	\$0	\$0	0.0%	0	n/a
\$9,000,000	\$8,105,213	\$5,126,250	\$5,126,250	\$18,103,065	253.1%	219	Unduplicated
\$437,500	\$825,000	\$1,600,000	\$0	\$2,005,557	100.0%	791	Unduplicated
\$46,135,744	\$55,962,252	\$72,295,561	\$61,101,193	\$53,023,484	-13.2%	0	Supplemented DOE units
\$150,000	\$1,082,706	\$0	\$1,482,000	\$1,550,000	4.6%	127	Unduplicated
\$0	\$0	\$0	\$0	\$0	0.0%	0	n/a
\$0	\$0	\$0	\$0	\$0	0.0%	0	n/a
\$0	\$0	\$0	\$0	\$0	0.0%	0	n/a
\$0	\$0	\$0	\$0	\$0	0.0%	0	n/a
\$0	\$0	\$0	\$0	\$0	0.0%	0	n/a
\$0	\$0	\$0	\$0	\$0	0.0%	0	n/a
\$0	\$0	\$0	\$0	\$0	0.0%	0	n/a
\$0	\$0	\$0	\$0	\$0	0.0%	0	n/a
\$0	\$0	\$0	\$0	\$0	0.0%	0	n/a
\$170,238,501	\$206,629,086	\$228,536,931	\$270,691,758	\$358,210,427	32.3%	35,781	
16.4%	24.8%	24.74%	29.39%	39.02%			
30	32	27	26	33			

\*Inter-Tribal Council of Arizona



**Weatherization  
Assistance Program  
Funding Survey**

**Table 7:**  
Source of  
Other Funds

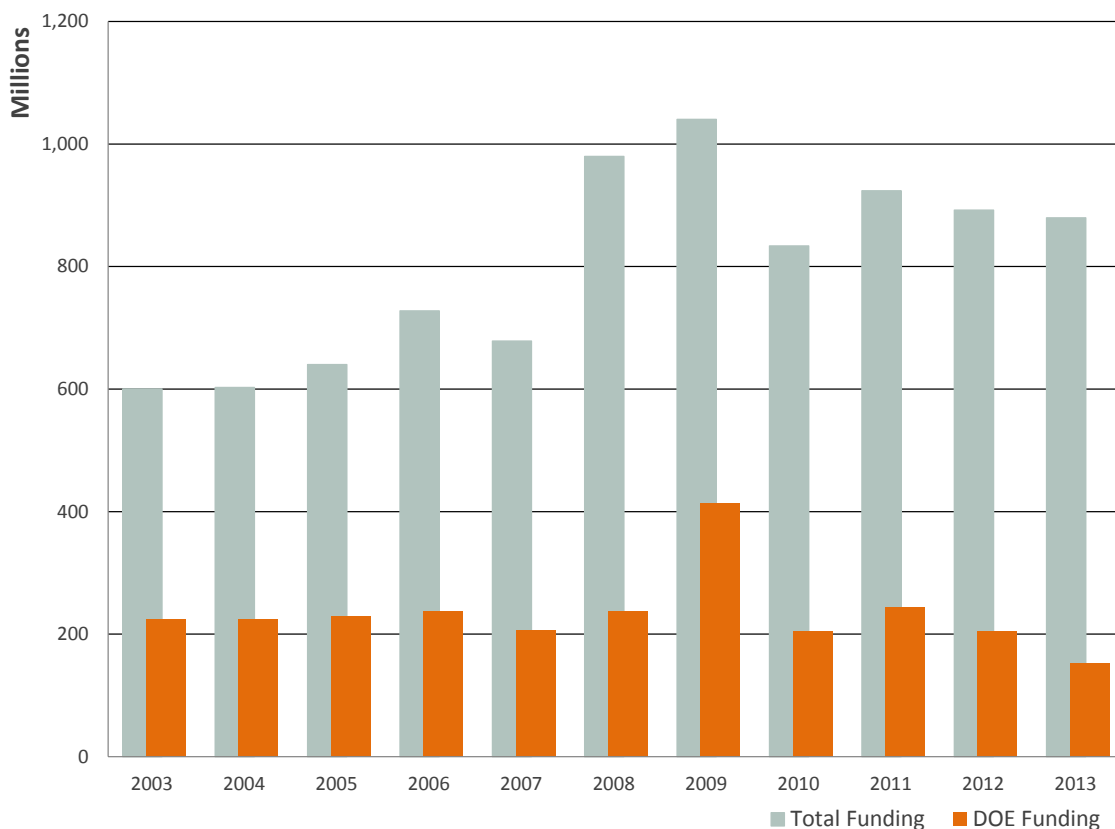
Grantee	Total 2013	Sources of Funding and Amount Breakdown						
Alabama	\$0							
Alaska	\$58,150,000	State						
Arizona	\$3,500,000	Utility funds						
Arkansas	\$0							
California	\$0	local leveraged funds not reported to state, 4035 units have combined LIHEAP + Other funds						
Colorado	\$10,059,536	\$7,822,801 - State Severance Taxes; \$600,000 - State Clean Renewable Energy Fund; \$1,636,735 - Utility funds						
Connecticut	\$500,000	Utility funds						
Delaware	\$1,300,000	\$1,000,000 - RGGI; \$300,000-Utility funds						
Dist. Columbia	\$2,000,000	Utility funds						
Florida	\$0							
Georgia	\$1,750,000	Utility funds						
Hawaii	\$0							
Idaho	\$2,949,000	Utility funds						
Illinois	\$33,941,505	State utility funds						
Indiana	\$924,925	State						
Iowa	\$5,301,910	Utility funds						
Kansas	\$35,997	\$12,421 - Owner Contribution; \$10,538 - FHLB; \$11,500 - Utility funds; \$1538 - Donations						
Kentucky	\$0							
Louisiana	\$325,835	PVE						
Maine	\$1,113,215	State funds						
Maryland	\$17,529,228	\$16,252,108 - Utility funds; \$1,000,000 - SEIF/RGGI; \$237,120 - FERC; \$90,000 - LIURP/Columbia Gas						
Massachusetts	\$39,050,000	Utility funds						
Michigan	\$0							
Minnesota	\$1,766,458	\$160,000 - LP State fund; \$104,176 - State funds; \$1,493,394 - Utility funds; \$8,348 - Miscellaneous						
Mississippi	\$0							
Missouri	\$3,244,035	Utility funds						
Montana	\$3,027,368	\$2,160,664 - Utility funds; \$431,704 - BPA; \$435,000 - USB						
Nebraska	\$169,701	PVE						
Nevada	\$3,426,780	Utility funds						
New Hampshire	\$5,814,283	Utility funds						
New Jersey	\$0							
New Mexico	\$503,330	Utility funds						
New York	\$0							
North Carolina	\$0							
North Dakota	\$20,200	Utility funds						
Ohio	\$53,103,421	Utility funds						
Oklahoma	\$0							
Oregon	\$12,418,502	\$9,576,302 - Public Purpose; \$2,842,200 - Utility funds						
Pennsylvania	\$0							
Rhode Island	\$5,882,542	Utility funds						
South Carolina	\$0							
South Dakota	\$0							
Tennessee	\$0							
Texas	\$0							
Utah	\$975,000	Utility funds						
Vermont	\$14,745,550	\$7,986,570 - State funds; \$6,758,980 - Utility funds						
Virginia	\$0							
Washington	\$18,103,065	\$2,192,164 - BPA; \$10,000,000 - Matchmaker Program; \$4,614,272 - Utility funds; \$1,296,629 - Other contributions						
West Virginia	\$2,005,557	Utilities						
Wisconsin	\$53,023,484	State Funds						
Wyoming	\$1,550,000	\$850,000 - State funds; \$700,000 - LIHEAP Crisis						
Amer. Samoa	\$0							
ITCA*	\$0							
Navajo	\$0							
N. Arapahoe	\$0							
Guam	\$0							
Puerto Rico	\$0							
N. Mariana Isles	\$0							
Virgin Islands	\$0							
<b>TOTAL</b>		<b>\$358,210,427</b>						

\*Inter-Tribal Council of Arizona

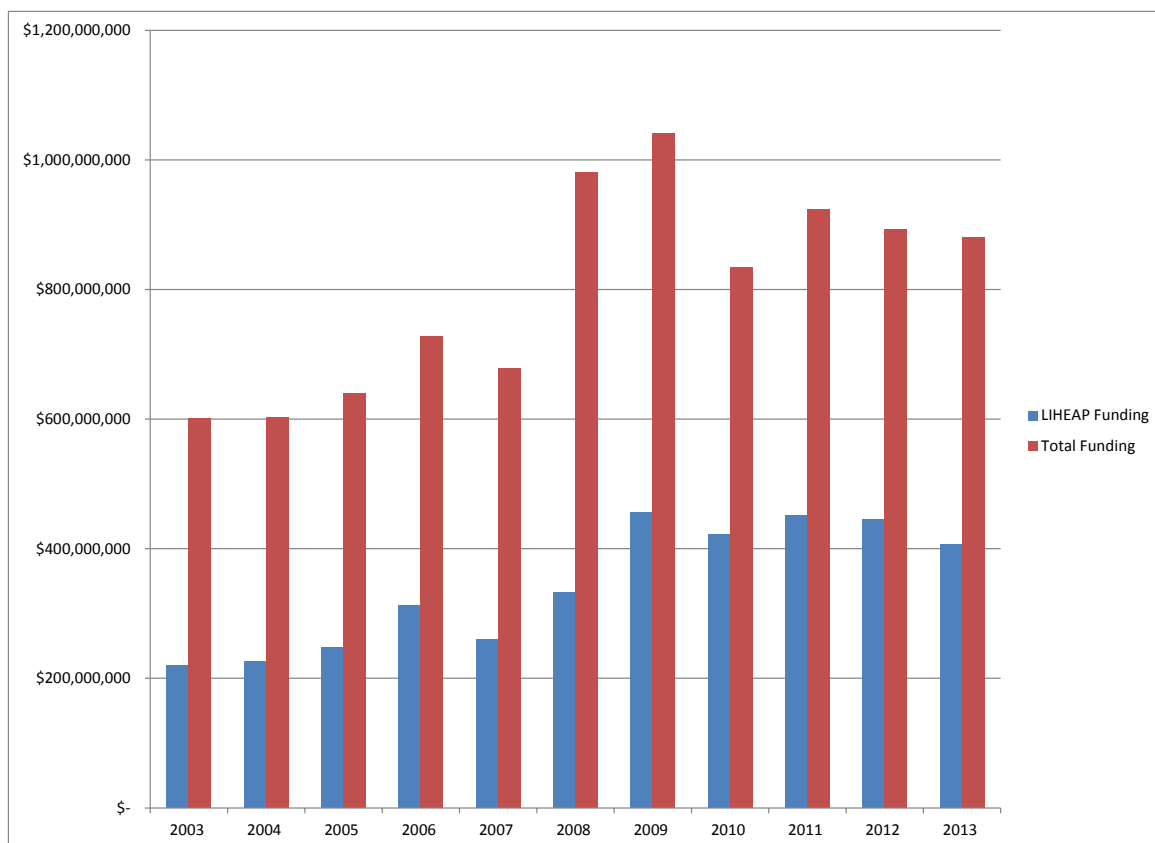


**Weatherization  
Assistance  
Program  
Funding Survey**

**Figure 1:**  
DOE WAP Funding  
vs. Total WAP Funding  
2003–2013



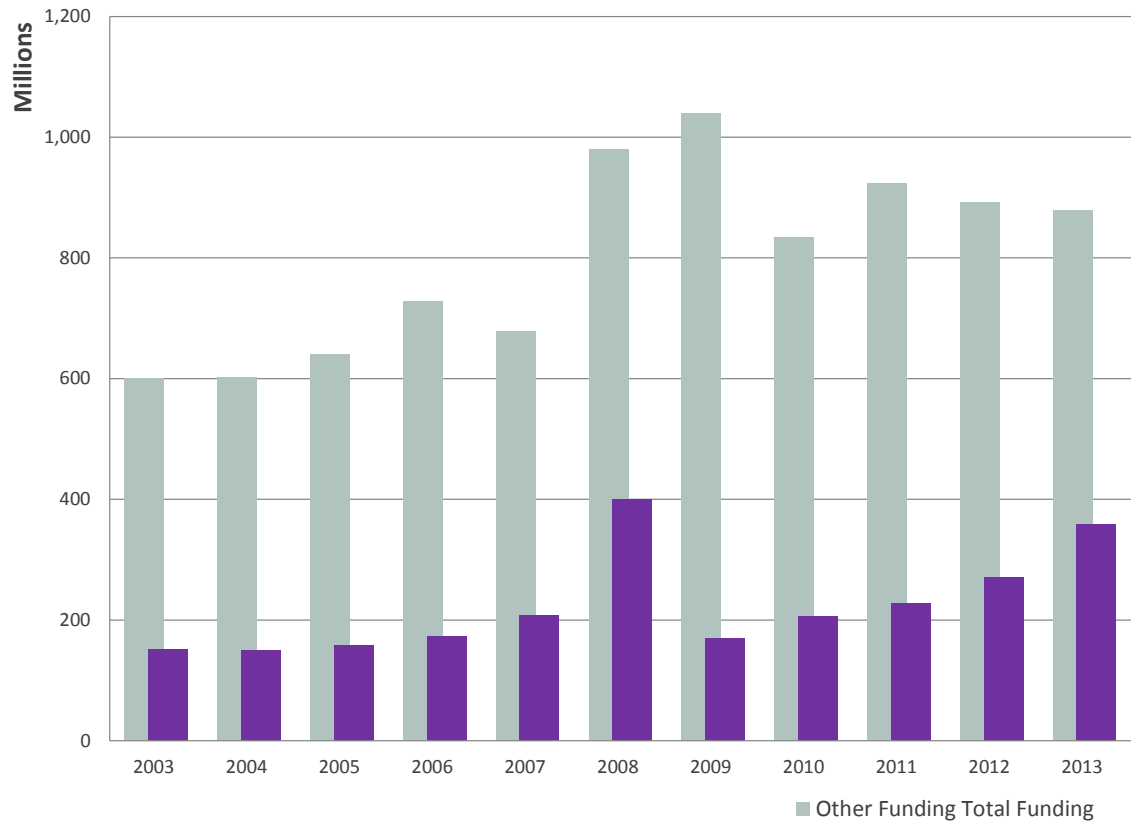
**Figure 2:**  
LIHEAP WAP Funding  
vs. Total WAP Funding  
2003–2013



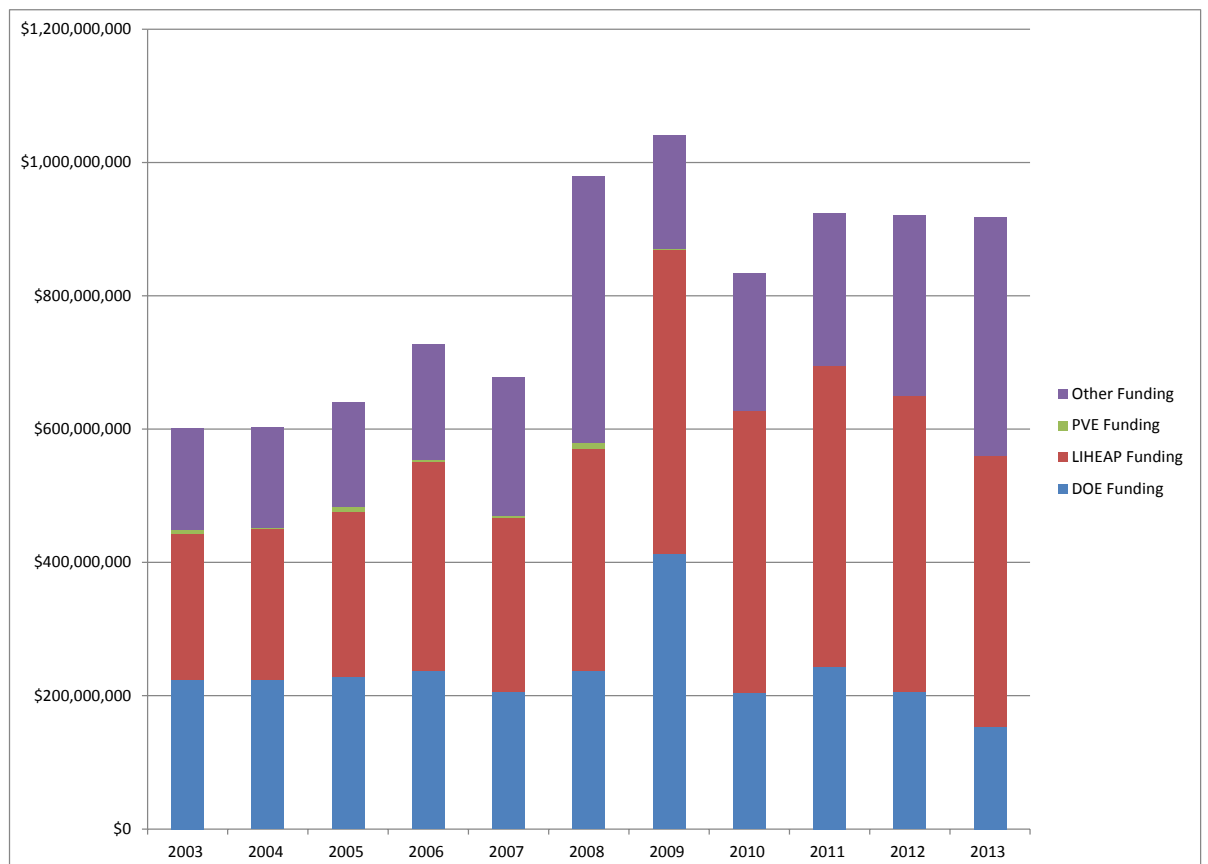


**Weatherization  
Assistance  
Program  
Funding Survey**

**Figure 3:**  
Other Funding vs.  
Total WAP Funding  
2003–2013



**Figure 4:**  
Total All  
Funding Sources  
2003–2013

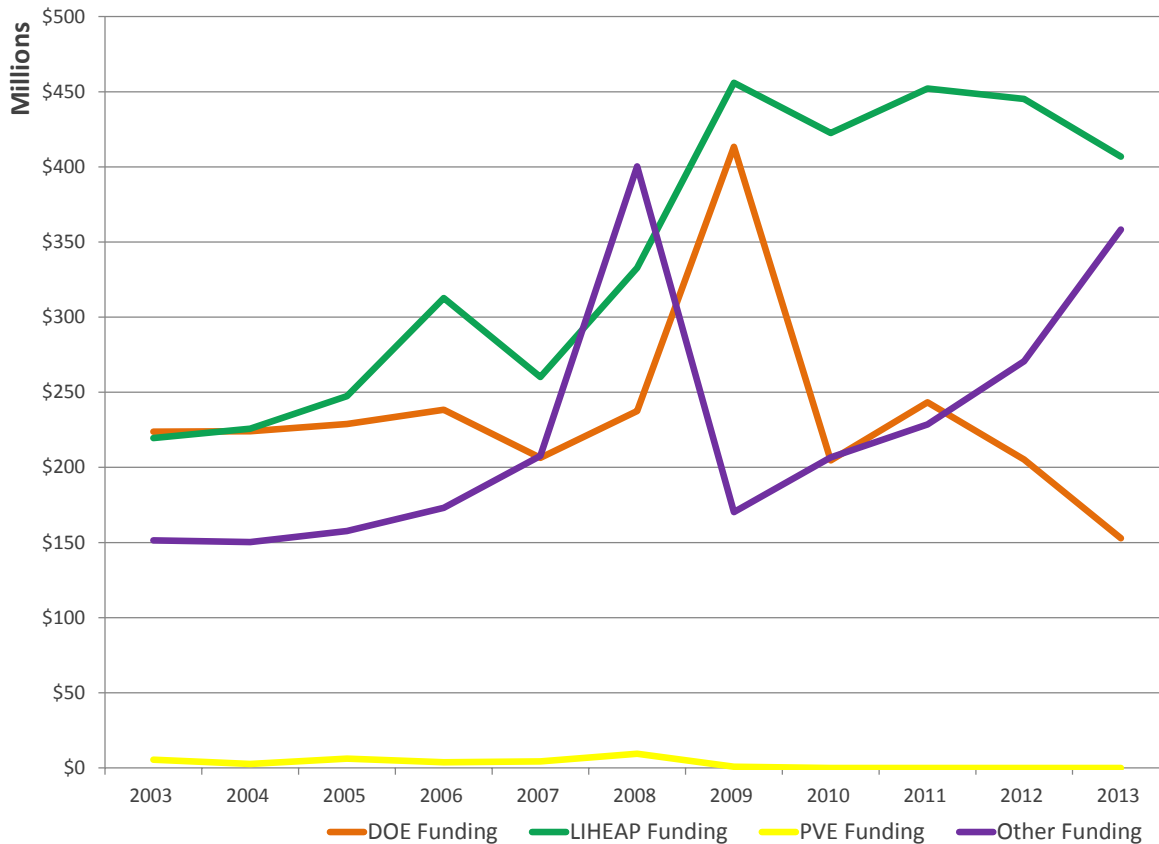




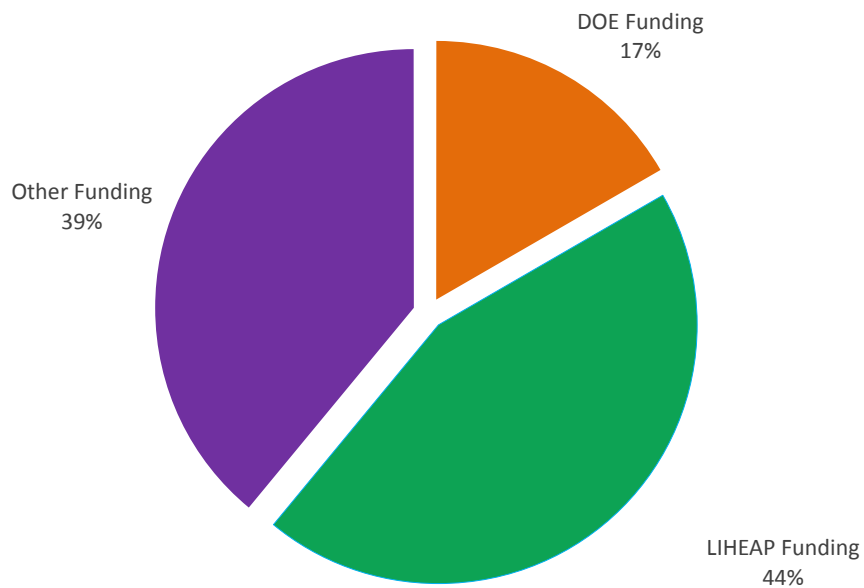


## Weatherization Assistance Program Funding Survey

**Figure 5:**  
WAP Funding  
Over Time  
2003–2013



**Figure 6:**  
WAP Funding by  
Source 2013





---

**Our Mission:** Building capacity in states to respond to poverty issues

---

The National Association for State Community Services Programs (NASCSPP) represents the states in their work to improve the lives of low-income families and strengthen local economies. NASCSPP members administer the federally-funded Community Services Block Grant (CSBG) and the Weatherization Assistance Program that serve millions of American families in communities across the country.



**National Association for State Community Services Programs**

111 K Street, NE, Suite 300

Washington, DC 20002

[www.nascsp.org](http://www.nascsp.org)

202-624-5866

[nascsp@nascsp.org](mailto:nascsp@nascsp.org)