

KRENDL

Fiber Moving Equipment



OWNERS MANUALS MODEL #1000/2000



50 YEARS OF QUALITY AND SERVICE

KRENDL MACHINE COMPANY • 1201 SPENCERVILLE AVE
DELPHOS, OHIO 45833 • TELEPHONE 419-692-3060 • FAX 419-695-9301
E - MAIL: krendl@krendlmachine.com • WEB SITE: www.krendlmachine.com

CONGRATULATIONS ON YOUR PURCHASE OF KRENDL EQUIPMENT

THIS IS YOUR

MODEL #1000/#2000 OWNER'S MANUAL

**FOR ASSURED SAFETY AND CONFIDENCE, PLEASE READ THIS
MANUAL CAREFULLY BEFORE OPERATING YOUR MACHINE.**

THANK YOU FOR YOUR PURCHASE!

**KRENDL E-MAIL ADDRESS IS: krendl@krendlmachine.com
KRENDL WEB SITE IS: www.krendlmachine.com**

Table of Contents

	PAGE
INTRODUCTION.....	1
GENERAL SAFETY INFORMATION.....	2-3
RETURNED GOODS PROCEDURE	4
WARRANTY	5
ASSEMBLY.....	6
BASIC COMPONENTS.....	7
THEORY OF OPERATION.....	8
OPERATING INSTRUCTIONS	
Machine Hook-up.....	8-9
Electrical Operation.....	10
Mechanical Settings.....	11-12
GENERAL MAINTENANCE.....	12-16
ELECTRICAL SYSTEM.....	17-22
TROUBLESHOOTING.....	23-25
PARTS LIST.....	26-46
GLOSSARY.....	47
SERVICE RECORD.....	48

INTRODUCTION

Thank you for purchasing a **KRENDL FIBER MOVING MACHINE**. With over fifty years experience in manufacturing fiber moving equipment, we have designed and built your machine with the highest quality to provide years of reliable service.

This manual has been prepared to help you obtain the maximum efficiency and service from your Krendl equipment. The machine is designed to condition and apply fibers with the utmost in dependable performance. Our primary objective is to build equipment which will provide complete satisfaction so that you may confidently recommend Krendl to others.

We do not manufacture or sell fibers. Our interest lies only in the proper performance of the equipment we manufacture. We make no recommendations or guarantees concerning various fibers.

CAUTION:



This manual contains important information regarding the **safe** assembly and operation of your machine. We urge you to read it carefully and follow the instructions provided. If your questions are not answered in this manual, may we hear from you? We want you to be able to operate this unit safely and confidently.

UNPACKING: Store and unpack carton with correct side up. Unpack your machine **IMMEDIATELY** and check for damage in shipping. **Place any damage claim with delivering carrier, saving all packing materials for inspection.** Our warranty covers manufacturer's defects only. **DO NOT** return to shipper.

FILL IN AND RETAIN:

Krendl Machine Company
1201 Spencerville Ave.
Delphos, Ohio 45833 U.S.A.

Telephone: 419-692-3060
Fax: 419-695-9301
E-mail: krendl@krendlmachine.com
Web Site: www.krendlmachine.com

For your protection in the event of theft or loss, please fill in the information requested for your own records. This information will be needed for in-warranty repairs. You may also want to attach a copy of your invoice.

Machine model number _____ Blower motor manufacturer _____


Serial number _____ Agitator motor manufacturer _____


Blower(s) serial number(s) _____ Speed reducer manufacturer _____

Date of purchase _____ Supplier _____

The model and machine serial numbers are located on the base of the machine unit. The blower(s) serial number(s) is located on the motor housing of blower.

GENERAL SAFETY INFORMATION

 **Important:** Read **all** instructions **before** operating this unit. This equipment can be potentially dangerous and must be used in strict accordance with instructions.

 **Disclaimer Notice:** The manufacturer will not be legally responsible for any injury or damage resulting from the improper use of this equipment or the failure to follow instructions.

Unpacking

Handle cartons with care to avoid damage from dropping or bumping. Store and unpack cartons with the correct side up. Completely remove machine from the packaging and from any shipping pallet or skid to which it might be attached. In addition, completely remove all shipping materials from **inside** the machine.



General Safety

1. Read this manual carefully and become familiar with your machine unit. Know its applications, limitations, and any hazards involved.
2. This machine was designed and manufactured for specific applications. Do not attempt to modify the unit or use it for any application it was not designed for. If you have any questions about your intended use or the machines suitability, ask your dealer/distributor or consult the factory. The manufacturers' could not possibly anticipate every circumstance that might involve a hazard. For that reason, warnings in the manual and warning tags or decals affixed to the unit, are **not** all-inclusive. If you intend to handle, operate, or service the unit by a procedure or method not specifically recommended by the manufacturer, first make sure that such a procedure or method will not render this equipment unsafe or pose a threat to you and others.



Electrical Safety

- The **National Electric Code** (NEC) in the United States and many international electrical codes require frame and external electrically conductive parts of this machine to be properly connected to an approved earth ground. Local electrical codes may also require proper grounding of machine. Consult with local electricians for grounding requirements in your area.
- Never handle any kind of electrical cord or device while standing in water, while barefoot or while hands or feet are wet. Dangerous electrical shock will result.
- Use a ground fault circuit interrupter (GFCI) in any damp or highly conductive area. (metal decking or steel work)
- Reference NFPA 79, 70E, or OSHA safe work practices when performing energized work procedures.



Safety/Caution

- **Be Safe** - Keep away from moving parts.
- **Be Safe** - Make sure all guards, hopper bars, and hopper extensions are in proper place **before** operating machine. Hands should **never** pass below hopper bars.
- **Be Safe** - Do not remove motors or lift hopper when unit is connected to power supply.
- **Be Safe** - Make sure blower motor control and remote control hand pendant switch are in **off** position **before** connecting the power supply to the machine.
- **Be Safe** - Make sure machine is properly grounded. Protect all electrical supply cords from sharp objects, moisture, and other potentially hazardous materials. Keep power cords in good repair. Electrical service must be performed by a qualified electrician.
- **Be Safe** - Disconnect power supply **before** inspecting or adjusting unit.
- **Be Safe** - Consult a qualified technician to answer questions **before** attempting to operate, or injury may result.
- **Be Safe** - Wear an **approved** dust mask or respirator for operator comfort and protection.
- **Be Safe** - **Emergency Kill Switch** - In case of emergencies, always use red stop button located on top of Main Control Panel. It will stop all feeding and agitation.



Make Sure!

- Hopper is empty of foreign objects **before** starting.
- Adequate electrical power is supplied or damage to unit will result.
- Blower filter is kept clean and in place when blower is on.
- Blower is turned off **immediately** if hose is plugged, or blower will overheat.
- Agitator motor must be on **before** adding fiber.
- Blower(s) must be on, when agitators are running, or machine will bind.
- Agitator motor is not run with hopper empty for more than a few minutes, or damage to seals will result.
- Sprockets, chains, belts and pulleys are correctly **aligned** and **tensioned**.
- Pieces of bag are **not** left in the machine as this can bind and stall your machine.

RETURNED GOODS PROCEDURE:

IF MACHINE WAS NOT PURCHASED DIRECTLY FROM KRENDL MACHINE COMPANY, CONTACT YOUR SUPPLIER / DISTRIBUTOR.

When returning products to Krendl for repair, first obtain a return goods authorization, at which time you will be given shipping instructions. The product must be shipped **PREPAID**:

Krendl Machine Company
1201 Spencerville Ave.
Delphos, Ohio 45833 U.S.A.

Telephone: 419-692-3060
Fax: 419-695-9301
E-mail: krendl@krendlmachine.com
Web Site: www.krendlmachine.com

Once the unit is received, it will be inspected. In-warranty units will be repaired and returned immediately. An estimate of repair charges will be provided for out-of-warranty units.

WARRANTY:

Krendl Machine Company (Company) warrants to each original purchaser (Buyer) of its equipment or accessories that such products will be free of manufacturing defects for a period of 12 months from the date of shipment to the Buyer.

No warranty is made with respect to:

1. Components or accessories manufactured and warranted by others. Warranties for purchased component parts as supplied from vendor such as engine, electric motor, blower, gearbox, transmission, etc., if furnished by the manufacturer of the component, are on file at the Company's main office and copies will be furnished at request of Buyer. Component(s), shipping costs prepaid, shall be sent to Company who in turn shall forward to vendor for evaluation and warranty determination.
2. Any defect caused by repair, alteration and/or adjustment performed by Buyer or customer/ vendor of Buyer without the express written authorization of the Company.
3. The labor costs of replacing parts by parties other than the Company.
4. Any machine that has not been operated and/or maintained in accordance with normal industry practice and the written recommendations of the Company. (e.g. machine operated with an improperly sized, worn or damaged hose, improper or inattention to preventative maintenance, etc.)
5. The product has been subjected to misuse, negligence or accident or results of any application or use of the blowing equipment not in accordance with the Company recommendations.

This limited warranty does not cover the free replacement of component parts that become inoperative due to wear and usage and need to be replaced on a regular basis, including but not limited to: airlock seal(s), agitator(s), shredder(s), auger(s), fuse(s), switch(es), clutch(es), hose(s), shaft seal(s), chain(s), belt(s), sprocket(s), pulley(s), bearing(s), cable(s), battery(ies), filter(s), fan(s), etc.

The Company's obligation under this warranty is limited to repairing or replacing (at Company option) any part that is determined by the Company to be suffering from a manufacturing defect. The Company (at Company option) will provide any required parts and labor to the Buyer. If the equipment or parts must be returned to the Company for repair, all transportation costs shall be the Buyer's responsibility.

This limited warranty is expressly in lieu of any other guarantees and / or warranties, oral or written, expressed or implied, including without limitation, the implied warranty of merchantability. No warranty, express or implied, other than the aforesaid warranty is made or authorized by Company. Company shall not be liable for any direct, indirect, incidental or consequential damages to property or injury to any person or costs associated with loss of production resulting in loss of revenue, profits or loss of equipment through the use of this equipment.

Note: Special job circumstances incurring costs for specialized repair and next day delivery of parts will not be reimbursed by the manufacturer unless authorized by factory.

ASSEMBLY

Prior to packing, your machine has been assembled and tested to assure quality performance. However, to safeguard against damage in shipping, certain items are packaged separately within your carton and will need assembly. Remove extra drive chain which may be used later for airlock speed adjustment for other applications.

BLOWER DOOR: (See illustration A)

This unit has Blower Door and Filter inside hopper. Install the Blower Door and Filter on machine and secure with Filter Clips. (Blower Filter must remain in Blower Door.) An appropriate size hose is attached to the Blower Door input tube and the other end is located elsewhere to provide clean air to blowers. A fine screen, acting as a filter, over end of hose eliminates accumulation of unwanted debris. This eliminates frequent cleaning of the Blower Filter. (Frequent inspection of input hose is recommended.)

POWER CORDS: (20-30 amp twist lock inputs only)

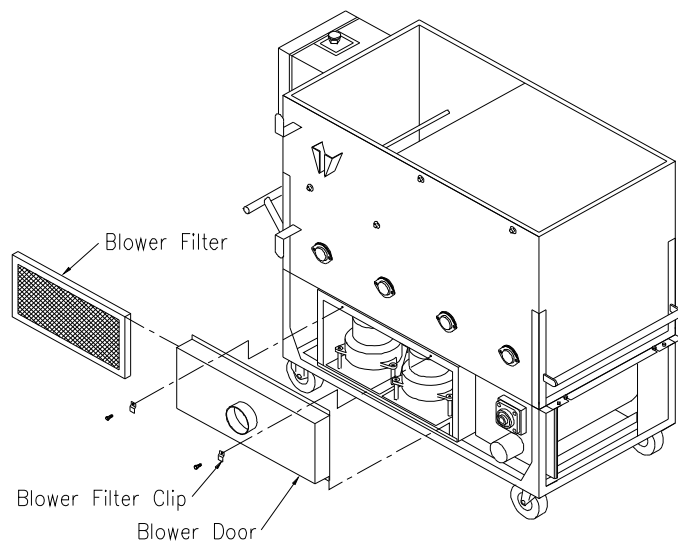
Female receptacle(s) need to be wired properly to main power cord(s). (For 240 volt 60 hz. see illustration F and consult electrician for assistance.) Units shipped to European countries will have standard (2) two prong 230V 16 amp plugs supplied. Units shipped overseas to other than Europe do not have plugs and receptacles on input cords due to the varying electrical plug configurations in different countries, unless provided by Krendl agents or suppliers.

ASSEMBLY OF OPTIONS: (See illustration B) Options below are available on the model #1000/2000 machine.**5" Wheel Package:** (standard or heavy duty)

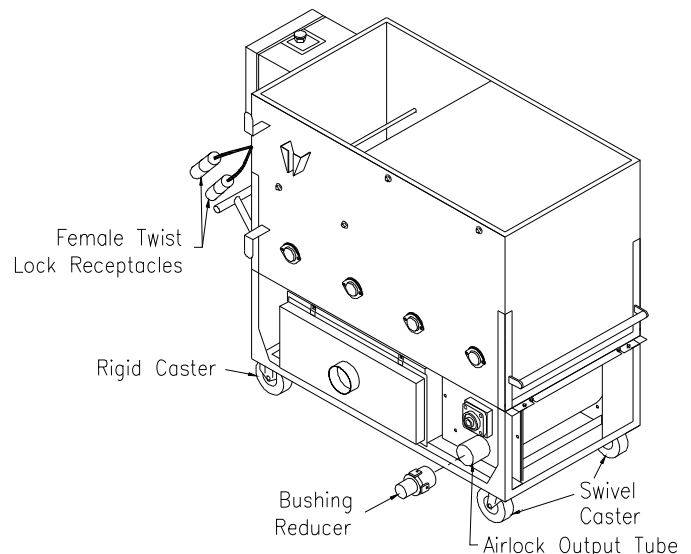
Attach two swivel casters on airlock end of machine for increased mobility. Mount rigid casters on control end with the hex bolts provided.

Bushing Reducer: (2" or 2 1/2" output)

Bushing reducer inserts into output tube of airlock. Press reducer firmly against shoulder and tighten two hold-down bolts to secure unit in place. The bushing reduces the size of opening to hose at its source, providing a more consistent feed while preventing hose plugs. (Standard output tube on model #1000/2000 is 3".)



(illustration A)



(illustration B)

BASIC COMPONENTS

This is a view of the basic components of your machine. It shows the location of each item and gives the function of each. Use this as a guide throughout the manual.

(illustration C)

A) BASE UNIT—Lower frame unit supporting blower box, speed reducer, motor, airlock and hopper.

B) AIRLOCK—Traps air and fiber while providing a metered flow.

C) SLIDE GATE—Meters the amount of fiber dropping into the airlock by controlling size of airlock opening.

D) SPEED REDUCER—Increases output power while decreasing speed of agitator/airlock drive motor.

E) BLOWER BOX—Enclosure protecting high-pressure blowers from contamination.

F) MOTOR—Provides driving power for speed reducer and agitator/airlock system.

G) AGITATOR—Conditions fiber in the hopper.

H) HOPPER—Upper unit of machine holding fiber.

I) MAIN CONTROL PANEL—Connects with main power, allowing operation of unit at machine or Remote Cord.

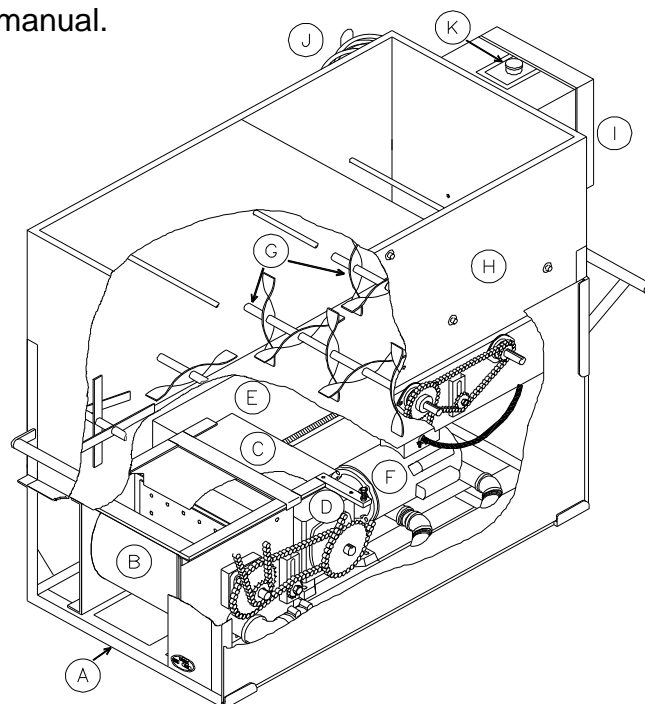
J) REMOTE CORD HANGER—Storage for remote control cord.

K) KILL SWITCH—Safety device for immediate stopping of machine.

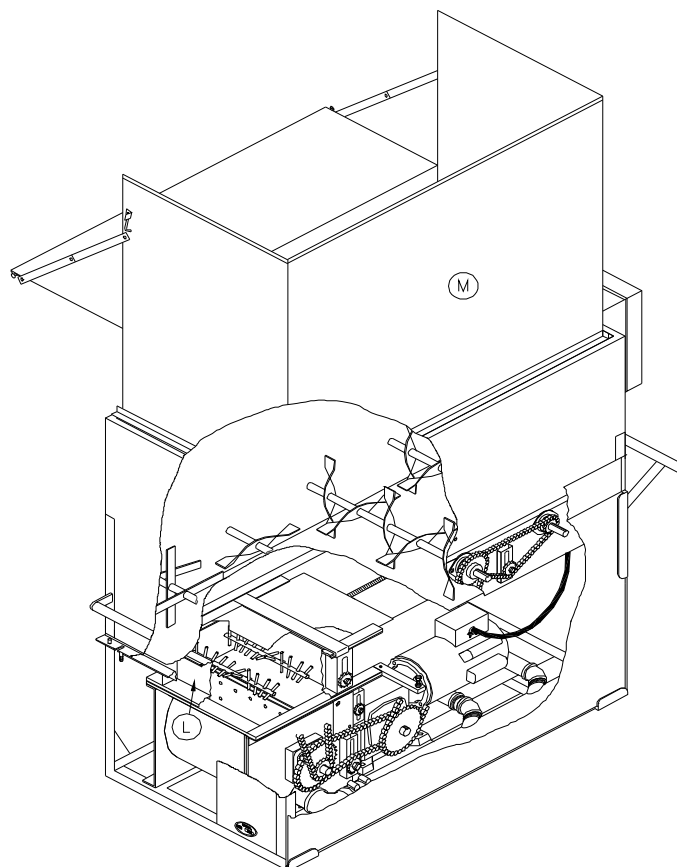
(illustration D)

L) SHREDDER SYSTEM (optional)—Increases production and coverage on all fiber products while reducing clumps that may exist in various fibers.

M) HOPPER EXTENSION (optional)—Increases overall hopper capacity.



(illustration C)

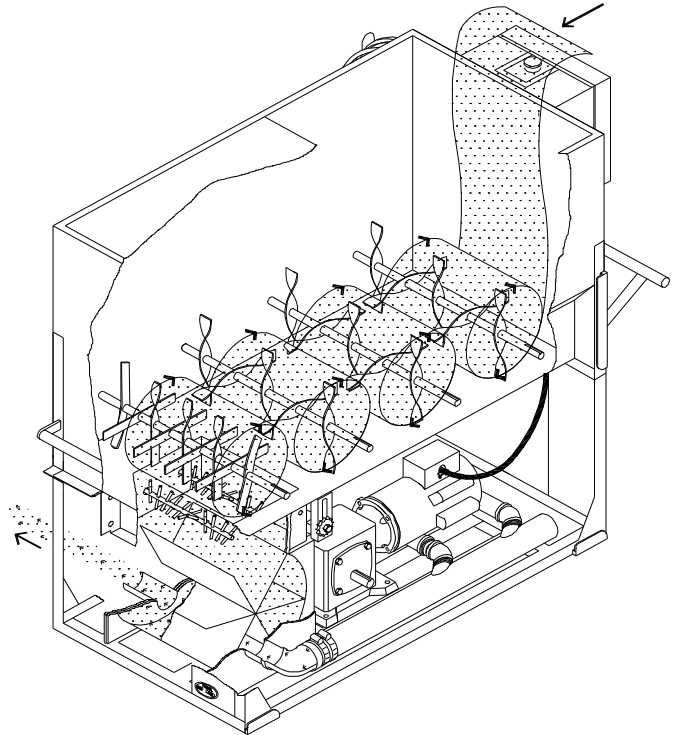


(illustration D)

THEORY OF OPERATION

This unit is designed to accept all fiber materials into the hopper area of the machine, passing through a multistep agitation system and dropping into the rotating airlock feeder. The airlock feeder has a crankgate control providing precision feeding of fiber for open blowing, sidewall blowing, and spray-on applications. Fiber is then rotated to a 6:00 o'clock position where air from the blower motor pushes fiber from the rotating chambers through the hose. Material and air is prevented from escaping into the machine while in the airlock by six rubber seals which conform to the airlock inner wall as the chambers revolve. The blower motor(s) is a three stage, high speed unit with low amperage designed to blow air. (Fiber does not pass through the blower fan chamber.) The high pressure and adjustable volume provides low amperage, low noise, and minimal attic dust. This reduces hose plugging problems and gives longer blower life.

Note: All Fiber/airlock machines provide slightly less coverage than thru-blower machines. Airlock machines cannot duplicate the high speed (13,000 r.p.m.) conditioning effect of fiber passing through the blower. These units blow the fiber closer to settled density.



OPERATING INSTRUCTIONS: MODEL #1000/2000

Machine Hook-up

This unit comes ready for connection to insulation hose, power cords, and accessories.

This unit provides a direct connection to 3" insulation hose. Slide hose on to outlet and secure with a hose clamp. All hose connections **must** have hose clamps to prevent air leakage from blower to nozzle. This helps to prevent hose plugging.



Remove remote control cord, blower door, packet, accessories, ect. from hopper and plug remote control cord into **Main Control Panel Box** located on hopper. (See illustration E)

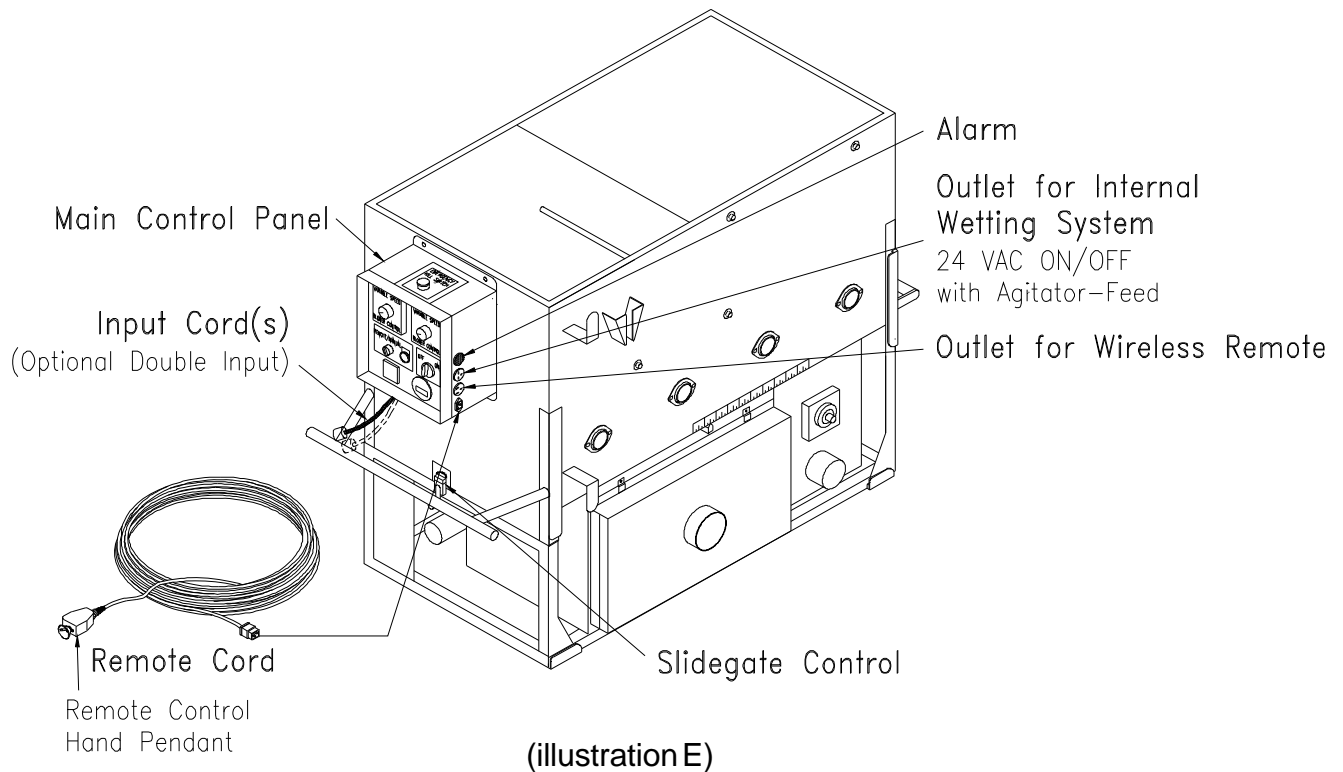
The first bag of insulation into hopper should be well broken by hand to assist agitator action. **Caution:** Hopper bars **must** be in place while loading hopper. **Never** put hands below bars or force feed fiber by pushing down on insulation.

When assembling unit, make sure remote control **hand pendant** switch is in the **off** (middle) position and close **slidegate**.

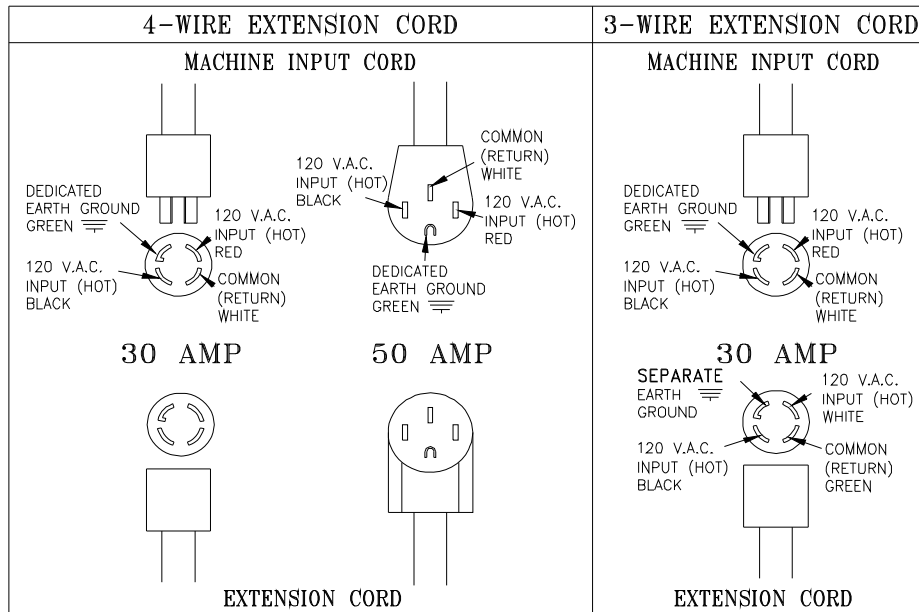


1. Connect power to Input Cord(s) located below Main Control Panel. (See illustration E)
On double input units, **both** input cords must be supplied with power from two separate sources for unit to work properly. When using extension power cords, wire gauge size should not be less than input cord on unit and not to exceed 50' in length. **Caution:** Operating unit with less than required voltage or inadequate generator size will result in damage to electrical components. This machine is marked with the correct input voltage on input cords located on bottom of the Main Control Panel. **Do not** operate machine with less than required voltage. Damage to motors and other electrical parts will result. Check voltmeter on Main Control Panel when machine is running.
2. **For 240volt, 60hz. models only**, properly connect female receptacle to extension cord. See illustration F and consult electrician for assistance.

Machine Hook-up (cont.)



Electrical Hook-up for 240volt, 60hz.



(illustration F)

IMPORTANT NOTE FOR 3-WIRE CORD:

A **separate** isolated ground is required that connects the frame of the machine to an earth ground source. Serious injury or death may result if machine is **not** properly grounded. If you have any further questions, consult a qualified electrician.

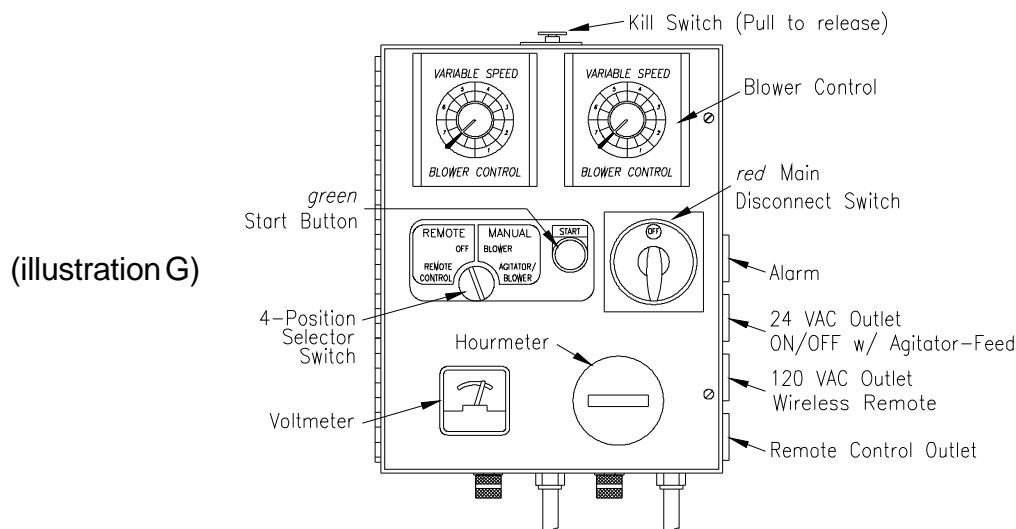
Electrical Operation

PRESS KILL SWITCH TO IMMEDIATELY STOP MACHINE AT ANY TIME!

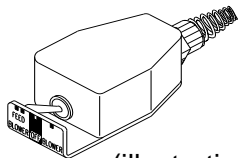
1. Make sure Kill Switch is out by pulling. (See illustration G)
2. Turn *red* Main Disconnect Switch to ON position. (See illustration G)
3. Set 4-Position Selector Switch to OFF. (See illustration G)
4. Press *green* start Button. **Machine will not run unless start button is pressed after Kill Switch is out and red Main Disconnect Switch is on.** (See illustration G)
5. Select operating mode on 4-Position Selector Switch from one of the following options:

Remote: Remote control hand pendant will control machine.
Off: Machine will not run. (overrides remote hand pendant)
Blower: Only the blower will run continuously. (manual control at machine)
Agitator-Feed/Blower: Both the blower and the agitator-feed will run continuously. (manual control at machine)

Main Control Panel (lid closed)



6. When operating in **Remote mode**, the 4-Position Selector Switch must be set to **Remote** position. (See illustration G)
7. Remote control hand pendant will be selected from the following:



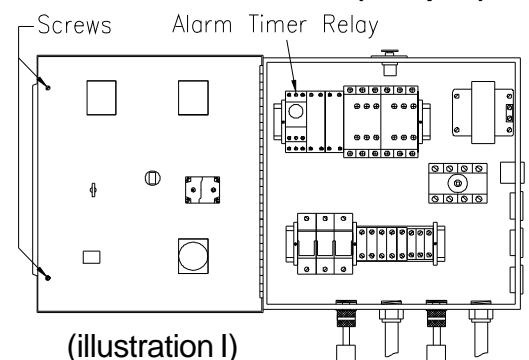
(illustration H)

BLOWER-FEED - operates both **blower motor** and **agitator-feed motor** simultaneously
OFF - (middle position) all functions stop
BLOWER - operates the **blower motor** only

8. If using optional Internal Wetting System(IWS), connect IWS cord to 24 VAC Outlet on Main Control Panel.
9. Adjust blower(s) and slidegate to desired settings. (See page 11)
10. **To adjust alarm time**, follow the procedure below: (See illustration I)

- a) Unplug machine from power source.
- b) Turn **off** *red* Main Disconnect Switch, loosen two screws in door, and open Main Control Panel lid.
- c) Turn Timer Relay knob to desired setting. (clockwise to **increase** warning time)
- d) Close lid, tighten two screws in door, plug in machine, turn on *red* Main Disconnect Switch and press *green* Start Button.
- e) Retest machine.

Main Control Panel (lid open)



Mechanical Settings

The control end of your machine contains the blower and slidegate controls to adjust your machine for each application and type of fiber. (See illustration J) **Blower control** (air) and **slidegate** (material feed) are adjusted according to:

APPLICATION:	Open blow, retro-sidewall and spray-on applications require varying amounts of control.
TYPE OF MATERIAL:	Cellulose, fiberglass, and mineral wool have different textures and densities that respond to machine settings.
HOSE:	Corrugations or roughness of interior surface, diameter, length and elevation of hose will also require varying adjustments.
WEATHER CONDITIONS:	Temperature and humidity may require day to day adjustment of machine settings.

BLOWER CONTROL AND SLIDEGATE GENERAL SETTINGS:

Blower control can increase or decrease the amount of air in the system, affecting the velocity(speed) and spread rate(coverage) of fiber. (See illustration J) The blower control dial operates clockwise, from HIGH to LOW, controlling air pressure and amount of air.

Opening or closing slidegate (material feed) controls the amount of fiber dropping into the airlock which changes the production rate (lbs. per hour). (See illustration J) For calibration purposes the scale located on right side of machine indicates how many inches the airlock slidegate is opened.

The blower and slidegate controls **working together** affect the distance fiber can be blown through a hose without plugging. These controls also affect the accurate blowing of fibers for spraying applications.

These settings control the following:

- **Density** of fiber blown in retro-sidewall application.
- **Velocity** of material impact when spraying.
- **Dust** on open blow.
- Material **spread rate** or coverage.
- **Production** rate (lbs. per hour blown).

GENERAL BLOWER CONTROL AND SLIDEGATE SETTINGS FOR OPEN BLOW:

(See illustration J)

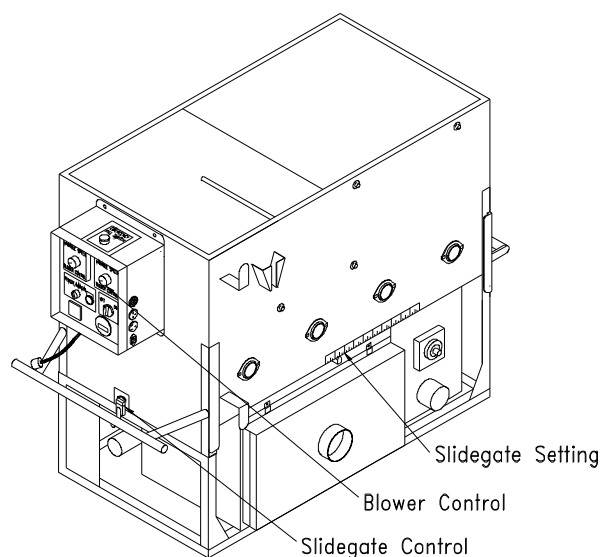
With the **slidegate** closed, turn **agitator-feed motor on** and variable speed blower control(s) on low. Fill hopper with insulation and adjust **blower control** and **slidegate**. In making adjustments, move controls proportional to each other. (i.e. If variable speed **blower control** is half speed, **slidegate** should be half open.) Open slidegate to allow fiber to drop into the airlock providing good production, but not beyond point where hose plugs. As hose length is increased, the **blower control** speed is increased while closing the slidegate proportionally. This will increase the distance fiber can be blown through the hose and improve material coverage rate, while decreasing the blowing production rate (lbs. per hour blown). These adjustments are for open blow. If specialty application or retro sidewall work is done, refer to General Blower/Slidegate Settings chart(below left) or fiber manufacturer.

GENERAL BLOWER/SLIDEGATE SETTINGS:

Since specific settings need to be determined by each operator, the following are only suggested guidelines. Consult the fiber manufacturer for additional recommendations specific to **their** product.

APPLICATION	BLOWER CONTROL	SLIDEGATE
Open Blow	High	Full Open
Sidewall-Retrofit	High	Half Open
Wall Cavity Spray	Medium	Half Open
Commercial Spray(Adhesive)	High	One-third Open

Control End of Machine



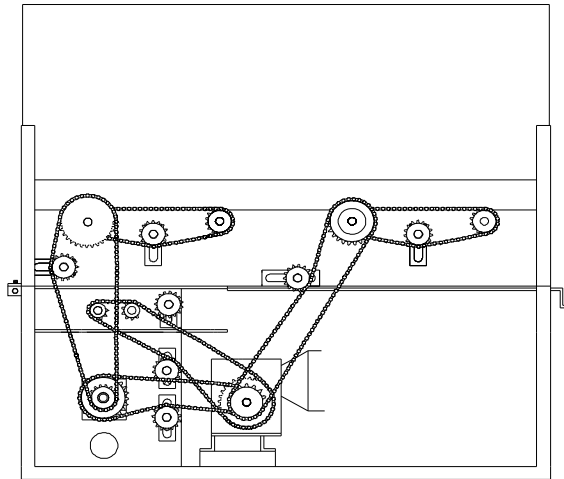
(illustration J)

Mechanical Settings (cont.)

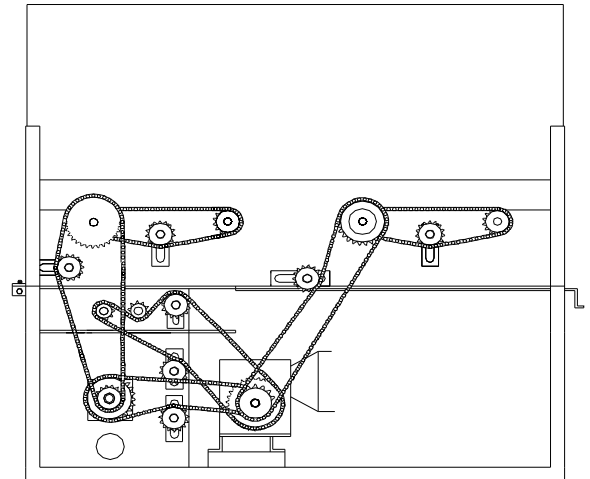
OPTIONAL SHREDDER ASSEMBLY:

If this unit is supplied with a shredder assembly; airlock/agitator speeds are preset at the factory. **No** further sprocket setting speeds are needed, as this system will accommodate most fibers and applications. However, the shredder **direction** can be adjusted as described below.

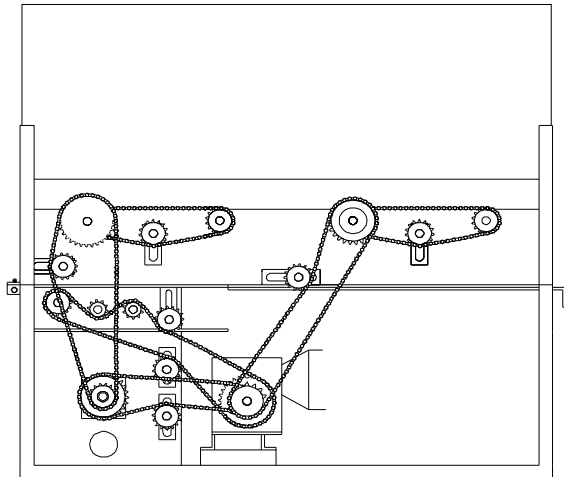
SHREDDER ADJUSTMENT:



(illustration L)



(illustration M)



(illustration N)

Unidirectional Rotation (See illustration L) is preferred as an all-around setting for a combination of materials and applications. This setting provides for the greatest **coverage** and **best control** of the fibers in wall cavity spray, commercial spray, internal wetting (stabilized) and open blow applications.

Center-Down Rotation (See illustration M) force feeds the fiber into the airlock at a faster rate. This direction is preferred for the greatest **production** of various fibers in an open attic blow application although coverage may decrease.

Center-Up Rotation (See illustration N) is preferred for extended **coverage** on rock wool. **Note: For this application an upgrade kit containing an idler sprocket and chain will be needed.**

GENERAL MAINTENANCE

Periodic preventive maintenance will add years of life to your equipment. Reviewing the information in this manual will go a long way in reducing downtime and lost income. **To flip hopper up** for easy maintenance of lower base unit. (See illustration O) Remove side screen guard of machine. Loosen idler sprocket and remove drive chain. Make sure crank handle is in downward position. (See illustration L) Release hold down bolts at airlock end of machine and lift hopper back gently until it rests safely on the floor.



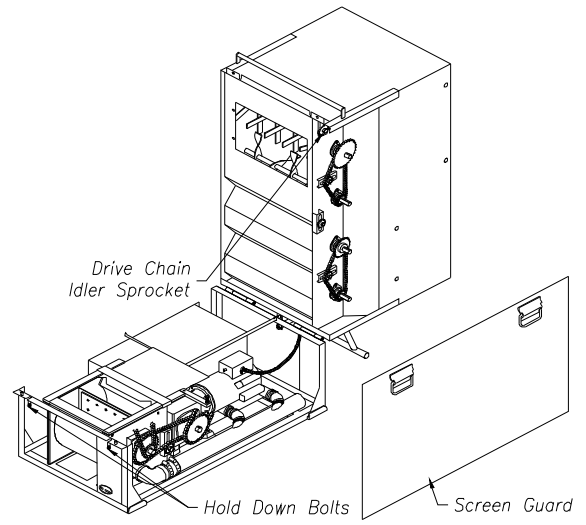
KEEP CLEAN: During operation, keep material from accumulating on Blower Filter. Always keep Filter in place while operating machine. After each use, remove fiber from hopper and blow out hose. (Use BLOWER mode at Main Control Panel or Hand Pendant.) Clean air from insulation hose can then be used to blow fiber from agitator motor and Blower Filter area. The *Blower Door* attached to this unit reduces filter maintenance. (See illustration A)

General Maintenance (cont.)

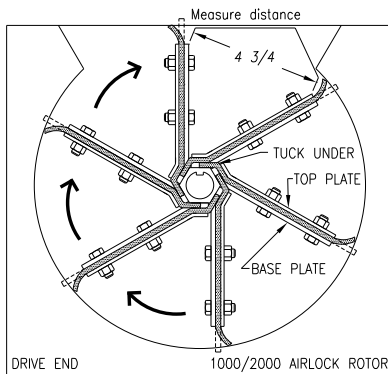
AIRLOCK:

SEAL REPLACEMENT: The purpose of the airlock seal is to trap air and fiber until it rotates 180° to the 6:00 o'clock position. At this point, fiber is pushed by air from the blower, out of the chamber. Worn or damaged seals allow air and fiber to escape back into hopper, thus reducing production and coverage. When it is necessary to replace seals, follow these directions:

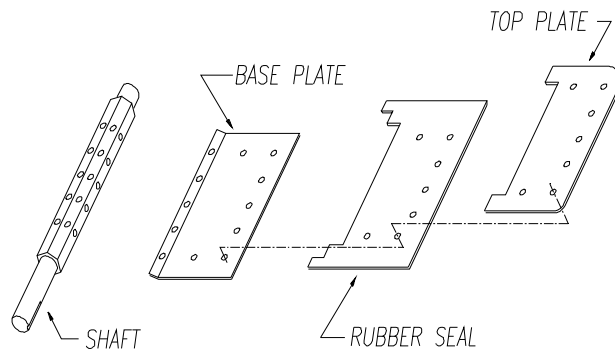
Airlock rotor plates that are damaged (bent) will need replaced. (Refer to Rotor Plate Replacement below.) Take out rubber seal by removing seven plate fastening bolts and nuts and top plate. The base plate will remain attached to airlock shaft. To install a new seal, reverse procedure. Seal should be inserted tight against the back base plate, pressing the lower tabs of seal down under the adjacent seal with a flat blade screwdriver. (See illustration P-1) Make sure all bolt holes are aligned while each side of seal is equally pressed against the end plates, before tightening bolts. Seal should be bent backwards for **clockwise** rotation.



(illustration O)



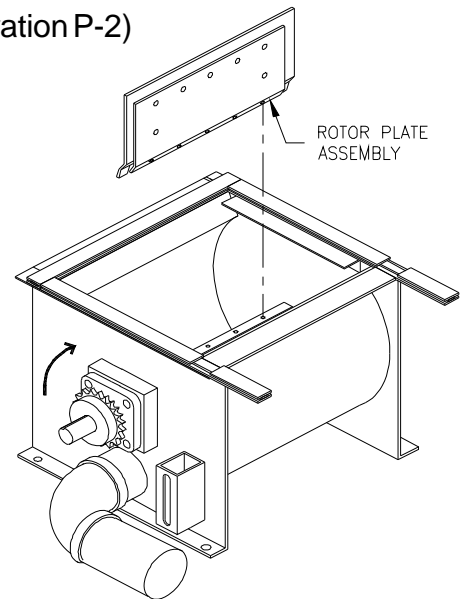
(illustration P-1)



(illustration P-2)

ROTOR PLATE REPLACEMENT:

1. To check plates for proper angle, measure distance between outer edge of metal plates. (See illustration P-1) This measurement should be 4 3/4". Measure all six plates and replace as needed.
 2. Remove damaged baseplate assembly from shaft using ratchet drive wrench with extension and 1/2" socket.
 3. Check seal for wear and damage. (Installing seal and top plate on the bench is quick and easy). Remove bolts from plate assembly and replace with new seal. Make sure seal and top plate are assembled on **correct** side of base plate before assembling in airlock. Seal should press backward towards top plate when installed correctly into airlock chamber. (See illustration P-1)
 4. Install the rotor plate assembly into the airlock. The airlock runs **clockwise** viewing it from the sprocket drive shaft. (See illustration Q) Align the base plate with holes on airlock shaft using a tapered punch.
- Caution:** Do not mount rotor plate backwards. If installed improperly, damage to seals will result and put undue stress on agitator motor. This causes overheating and poor production. Seal should be bent backward to allow for a **clockwise** rotation of rotor.
5. As rotor plate is installed, press bottom tab of seal under adjacent seal with flat blade screwdriver. (See illustration P-1)



(illustration Q)

(Entire rotor plate assembly may be removed and replaced. This procedure maybe easier than replacing just the seals.)


General Maintenance (cont.)

CHAIN: (#50 Nickel Plated)

ADJUSTMENT: A smooth operating chain drive should have a slight sag on the idler side of the chain. New chains should be installed under slight tension as they will elongate a small amount due to seating of pins and bushings during the first few days of operation. Chain should be kept in good condition by proper lubrication (dry film lubricant Dow 321) and occasional cleaning. Soaking chain in container of 10 weight oil will provide for internal lubrication of pins and bushings. However, excess oil must be drained and wiped away as excessive lubrication will cause fiber accumulation on chain. Worn out chain should be replaced. When chain is replaced, worn sprockets should also be replaced, preventing further damage to new chain.

SPROCKETS:

CHECK SPROCKETS FOR WEAR. Misalignment and/or loose sprockets and improper chain tension causes the premature wear of chain and sprockets. All sprockets, except speed reducer and idler sprockets, have been secured with a medium grade Loctite (general purpose thread locker), to prevent gradual movement. The set screws and key are also inserted with a medium grade Loctite. If sprocket is difficult to remove, it may be heated with a propane torch to loosen.

 **Caution:** Do not overheat sprocket or damage to bearing will result. A pulley or bearing puller can then be used to remove the sprocket and key. Replace new sprocket on shaft with key and medium grade Loctite applied to shaft. Align sprocket with corresponding sprocket, using a straightedge placed along face of teeth and tighten set screw. Speed reducer sprocket does **not** require Loctite.

BEARINGS:

AGITATOR BEARINGS in hopper are prelubricated, double-sealed, self aligning ball bearings. **No** lubrication is necessary. If bearings produce noise or heat (*too-hot-to-touch*), the bearings should be replaced.

AGITATOR BEARING REPLACEMENT: Spray area with rust penetrant (WD-40). Remove sprocket (See SPROCKET section above). Remove the two bolts from bearing flange and outer flange from bearing insert. Loosen set screws on bearing hub at each end of agitator shaft. Since all set screws are installed with a medium grade Loctite, a propane hand torch may be used to assist in removing them. Do not overheat unit, causing shaft to expand. Using a rubber mallet, drive agitator shaft an inch in one direction, creating a space between hopper and bearing unit. A bearing puller can then be used to remove the bearing. Eliminate any metal burrs from shaft with file and install new bearings with felt seals. Use a medium grade Loctite on set screws before securing bearing to shaft. (Check shaft diameter before ordering bearings; 3/4" or 1")

AIRLOCK AND SHREDDER BEARINGS are prelubricated, double sealed, self aligning ball bearings. Lubrication is required at three month intervals of normal running time, or sooner if bearings produce a noise or become too-hot-to-touch. Relubrication at the grease fittings is done with a lithium base grease conforming to a NLGI GRADE TWO consistency. The grease should be pumped in slowly until a slight bead forms around the seals. This bead, in addition to acting as an indicator of adequate lubrication, provides additional protection against the entry of foreign matter. **Important:** If a slight bead does **not** form indicating a failure of lubrication or if bearing shows signs of wear, replace bearing.

AIRLOCK AND SHREDDER BEARING REPLACEMENT: Remove four bolts from airlock bearing flange (two bolts from shredder bearing flange) and follow steps above for agitator bearing replacement.

SPEED REDUCER:

LUBRICATION: Periodically check oil level in reducer. Do not lay machine on its side as lubricant from unit will drain from vent plug. If speed reducer malfunctions because of improper oil level or type used, **warranty is voided**. Oil seals at input and output drives are considered to be replaceable maintenance items and can affect oil level. These are available at power transmission distributors. Your speed reducer has been filled with a synthetic lubricant (Klubersynth UH1 6-460). Consult speed reducer manufacturer's manual for lubricant replacement intervals.

AGITATOR MOTOR:

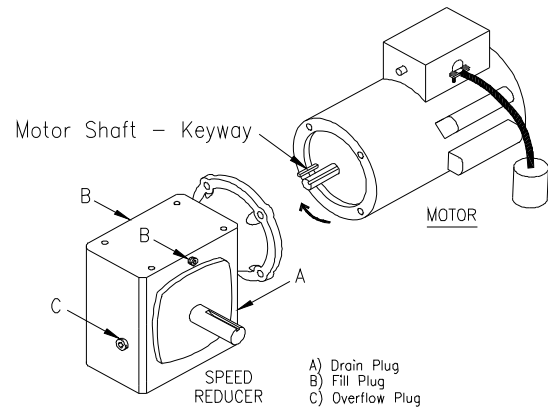
If agitator motor runs hot, activating the manual reset on motor, or if unit does not run properly, refer to troubleshooting sections of manual. The agitator motor should start quickly and run smoothly. If not, shut motor off **immediately** and check the cause. Low voltage, incorrect power supply, bad bearings, or misconnected wiring could cause motor failure. **These conditions void the motor warranty.** Overload conditions can be detected by checking the electrical current (amperage) compared with nameplate current (amperage) located on the body of the motor.

General Maintenance (cont.)

AGITATOR MOTOR REPLACEMENT: Unwire motor from Main Control Panel. Remove drive chain and flip hopper up as described at the beginning of General Maintenance section. Place a support block under motor to reduce stress while removing four reducer flange bolts with a 9/16" socket wrench. (If rear bolts are difficult to reach, remove reducer unit from lower frame for better access.) Pry motor from speed reducer a slight distance, using a large flat blade screwdriver placed in one of the slots where they join together. Pull motor unit straight away from speed reducer, retaining key. If motor does not separate easily, contact factory for assistance. (See illustration R) Before installing replacement motor, refer to motor nameplate. Check connection of new cord for correct voltage (low or high) and **PROPER ROTATION** of **motor** output shaft (**clockwise** facing output shaft). Rotate keyways of motor shaft and quill (input) of speed reducer to 12:00 o'clock position. (To turn speed reducer shaft, remove chain on output of speed reducer.) Assemble the key 3/4" off the end of the motor shaft and coat motor shaft with anti-seize compound. Align and insert the motor shaft carefully into the input quill. (A flat blade screwdriver may be helpful to keep key in place as motor shaft is inserted or centerpunch motor shaft.) Secure to flange with four hex bolts.



Caution: If the motor does not readily seat itself, check to determine if **key** has moved axially along motor shaft, causing interference. Tightening motor to reducer with excessive pressure against key will cause premature bearing failure and overheating of motor and reducer. Connect motor to Main Control Panel and check for correct rotation of **speed reducer** output shaft (**clockwise**). Reconnect drive chain and assemble unit for manual operation.

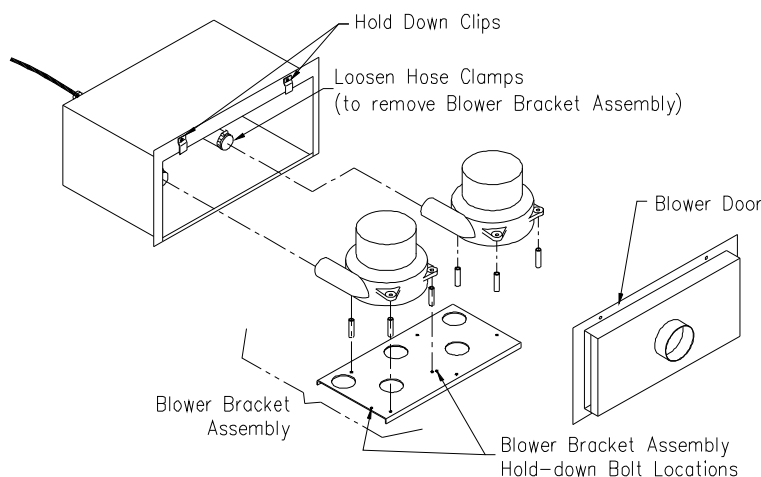


(illustration R)

BLOWER MOTOR:

Periodically remove Blower Filter and vacuum any material that has accumulated inside of blower box and around blower motor. Blow out any remaining debris around motor and intake orifice of fan with compressed air. This will extend the life of the blower significantly. Blower Filter life can be extended by occasional removing and back or reverse blowing through with compressed air. Filter should be replaced periodically depending on use. If blower produces noise or heat, refer to troubleshooting section of manual.

BLOWER REPLACEMENT: Unwire Blower from Main Control Panel and remove Blower Door by loosening the two Hold Down Clips. (See illustration S) Take note of electrical connections on blower and remove wire nuts from lead wires. Loosen hose clamp at the rear of the blower. Remove blower bracket assembly, secured with bolt, from blower box. Remove three bolts and spacers from blower bracket and remove blower. Reverse procedure for assembly.



Double 12.5 Amp(6 Amp 230 volt) 3-Stage Blower

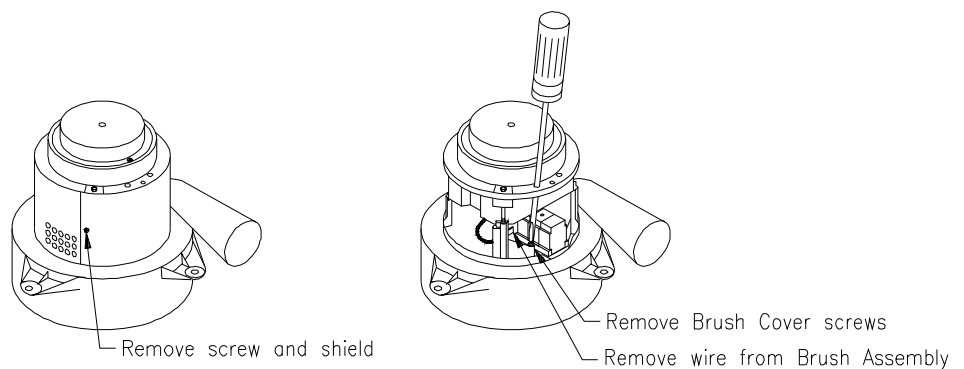
(illustration S)

General Maintenance (cont.)

CARBON BRUSH REPLACEMENT for 12.5 AMP(6 AMP 230 volt) 3-STAGE BLOWER: (See illustration T) Order replacement brushes from your supplier to assure proper brush style. Carbon brushes need to be replaced when excessive arcing is produced on the commutator. This would be evident by an intermittent scratchy sound with loss of blower r.p.m. Replace brushes before brush shunt touches the commutator.

1. Remove Blower from Blower Box. (See Blower Replacement on page 15)
2. Remove screw and shield from blower. (See illustration T)
3. Unhook wire connected to Brush Assembly.
4. Remove Brush Cover screws by inserting screwdriver through hole in blower housing and turning screw.
5. Pull out old Brush Assembly and install new Brush Assembly and Brush Cover.
6. Connect wire to Brush Assembly and reassemble blower shield. On reassembly and handling, the lead wires must be kept away from rotating parts and motor frame.
7. To achieve best performance, the new brushes should be seated on the commutator before full voltage is applied. To seat brushes, run variable speed blower control on medium speed for thirty minutes after brush change. The motor will return to full performance after an additional thirty to forty-five minutes running period at full voltage (BLOWER CONTROL on high). Application of full voltage directly after changing brushes will cause arcing, commutator pitting, and reduced overall life. Brushes can normally be changed two times before armature and other component replacement is required.
8. Reinstall Blower into Blower Box and wire Blower to Main Control Panel.

**12.5 Amp(6 Amp 230 volt)
3-Stage Blower Motor
(Brush Replacement)**



(illustration T)

ELECTRICAL SYSTEM

General Operation: (See illustration U for sequence and illustration G,V,W,X and Y for components)

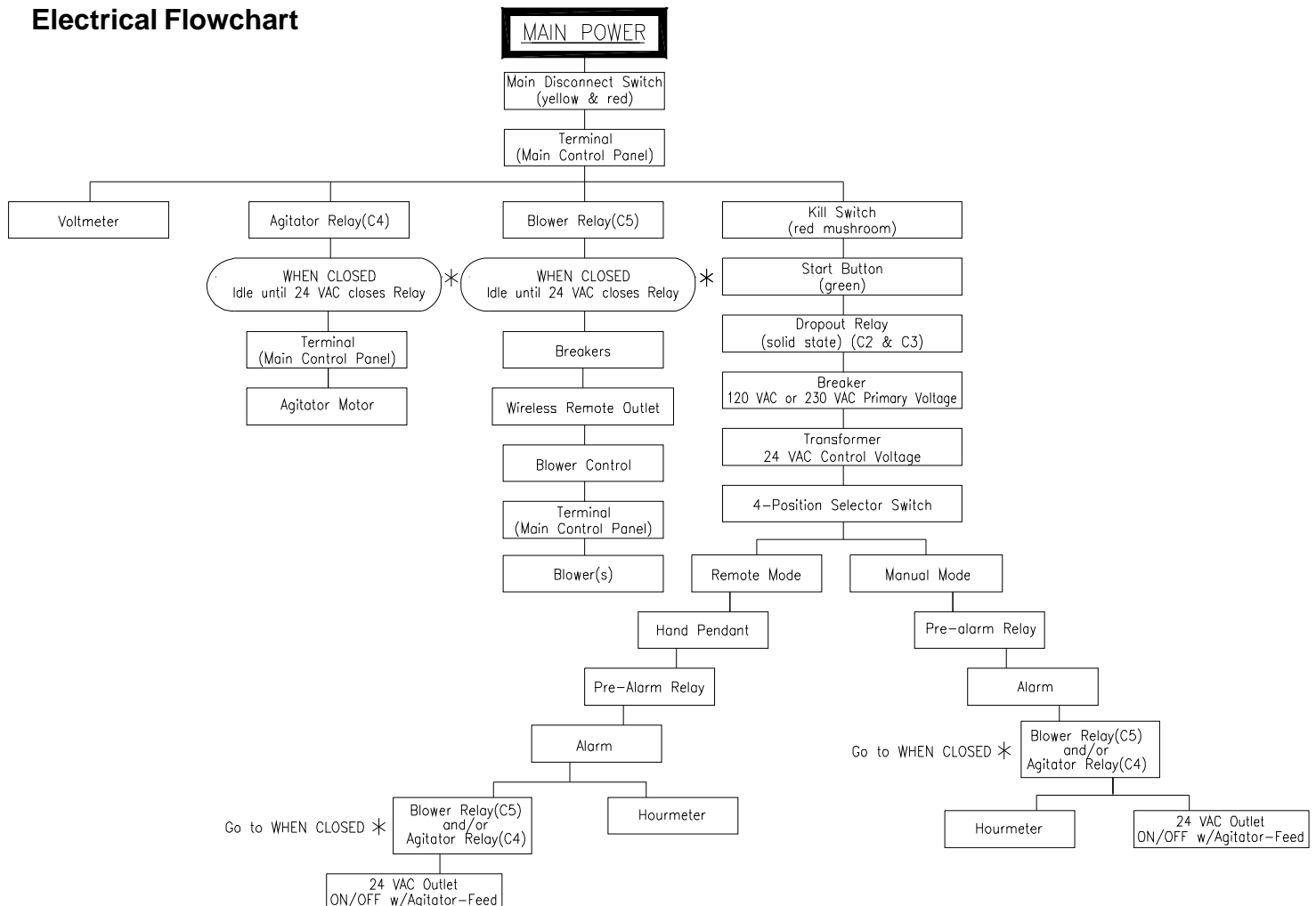
This unit is powered by **one** or **two** separate input sources connected at the bottom of the Main Panel Box. Turning the Main Disconnect Switch (*yellow* and *red* switch located on front of Main Control Panel) to the ON position distributes power to the Terminal Boards of the Main Control Panel, Voltmeter, Kill Switch, and the Upper Terminals of the agitator (C4) and the blower (C5) relays. (See illustration G)

When the Kill Switch (*red* mushroom button) is released (closed) and the *green* Start Button is pressed, power is supplied to the dropout relay(s) and the transformer. The transformer supplies 24 VAC to the 4-Position Selector Switch located on the front of the Main Panel Box.

When the 4-Position Selector Switch is turned to MANUAL mode or the 4-Position Selector Switch is set to REMOTE mode with remote control hand pendant switch closed, 24 VAC is supplied to the Pre-Alarm relay, sounding the alarm for a preset time. After the alarm stops, 24 VAC powers the blower (C5) and/or agitator (C4) relays.

When the agitator (C4) relay is closed, power is also supplied to the 24 VAC ON/OFF Outlet on Main Control Panel. If power is interrupted to this system by unplugging either main input cord(s), turning Main Disconnect Switch OFF, or pressing Kill Switch; the *green* Start Button needs to be **pressed** to reactivate the system **after** power distribution into the system has been reestablished. (See illustrations V, W & X for more details.)

Electrical Flowchart



(illustration U)

Electrical System (cont.)

Electrical Diagram Description for Pages 19,20,21,22:

Tags have been placed at the end of each wire in the electrical system to identify specific wires. This identification code is as follows:

- First letter - identifies component classification
- Second number - indicates specific component
- Decimal number/letter - identifies the terminal on the component

Letter next to identification code indicates **color code**.

Second series of numbers and letters **after dash** which identify connection at opposite end of wire are as follows:

- First letter - identifies component classification
- Second number - indicates specific component
- Decimal number/letter - identifies the terminal on the component

Example: R1.8-4SBL.1

Wire is connected between Relay #1, terminal 8 and Four Position Selector Switch Bottom Left, terminal 1.

LEGENDS FOR ELECTRICAL DIAGRAM

Electrical Component Abbreviations

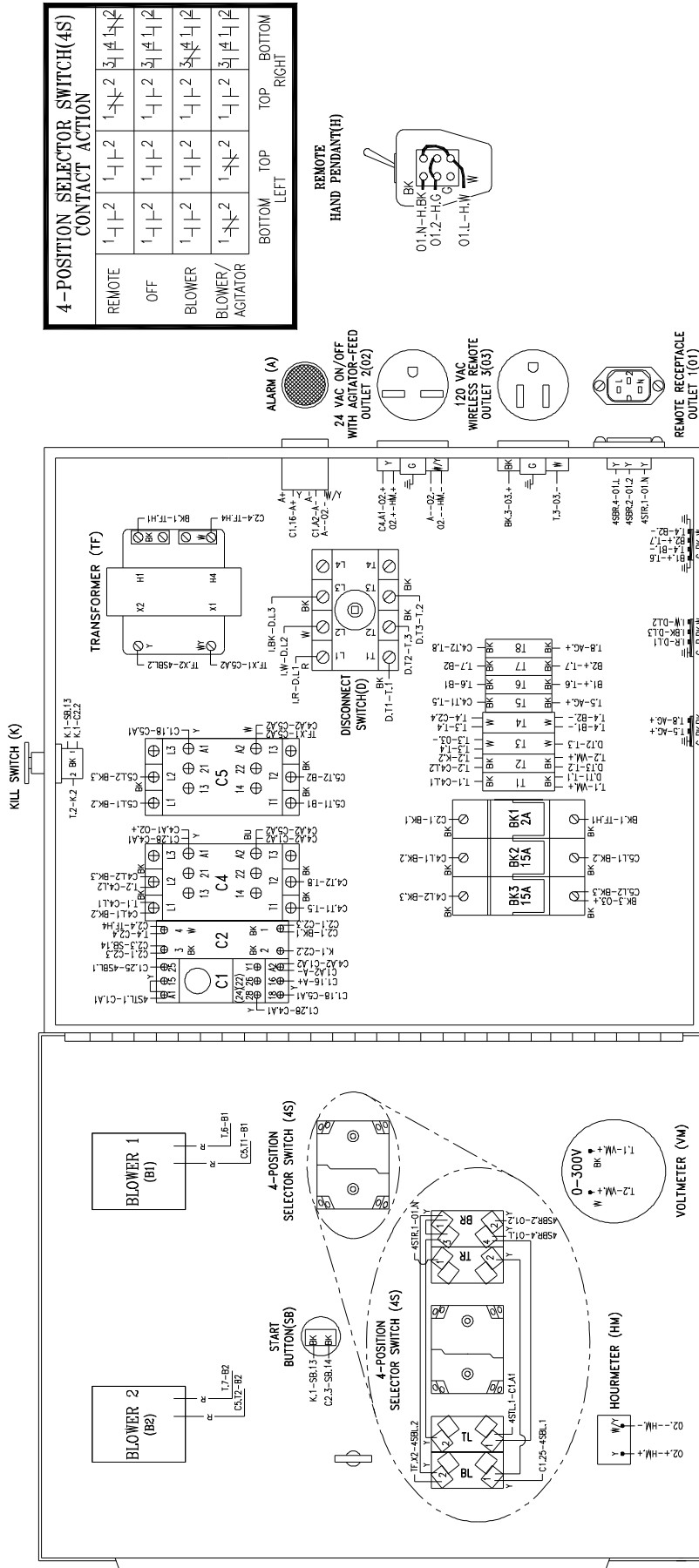
- TF = Transformer (.H1, .H4, .X1, .X2)
- C = Relay (C1,C2,C3,etc.)
- D = Disconnect Switch (.L = Disconnect input Line/ .T = Disconnect output Terminal)
- BK = Breaker (BK1,BK2,etc.)
- T = Terminal Board for Main Control Panel
- I = Input Cord
- RI = Right Input Cord (for Blower)
- LI = Left Input Cord (for Agitator)
- O = Outlet (O1,O2,O3,O4,etc.)
- V = Voltmeter
- H = Hand Pendant
- A = Alarm
- K = Kill Switch
- J = Junction Box Terminal Board
- B = Blower (B1, B2, etc.)
- 4S = Four Position Selector Switch
- SB = Start Button
- 4SBL = Four Position Selector Switch Bottom Left
- 4STL = Four Position Selector Switch Top Left
- 4STR = Four Position Selector Switch Top Right
- 4SBR = Four Position Selector Switch Bottom Right
- HM = Hourmeter

NOTE: Decimal letters (.L , .N , .H , .X) indicate terminal locations on the component.

ELECTRICAL DIAGRAM:

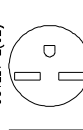
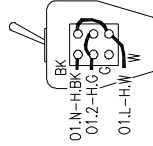
Periodically, disconnect machine from power source and check all electrical connections and components for broken or loose wires.

MODEL #1000/2000
240 V.A.C. — 60 Hz 1Ø



4-POSITION SELECTOR SWITCH(4S) CONTACT ACTION				
REMOTE	1-1-2	1-1-2	1-1-2	1-1-2
OFF	1-1-2	1-1-2	1-1-2	1-1-2
BLOWER	1-1-2	1-1-2	1-1-2	1-1-2
BLOWER/ AGITATOR	1-1-2	1-1-2	1-1-2	1-1-2

REMOTE
HAND PENDANT(H)



WIRE COLOR CODE

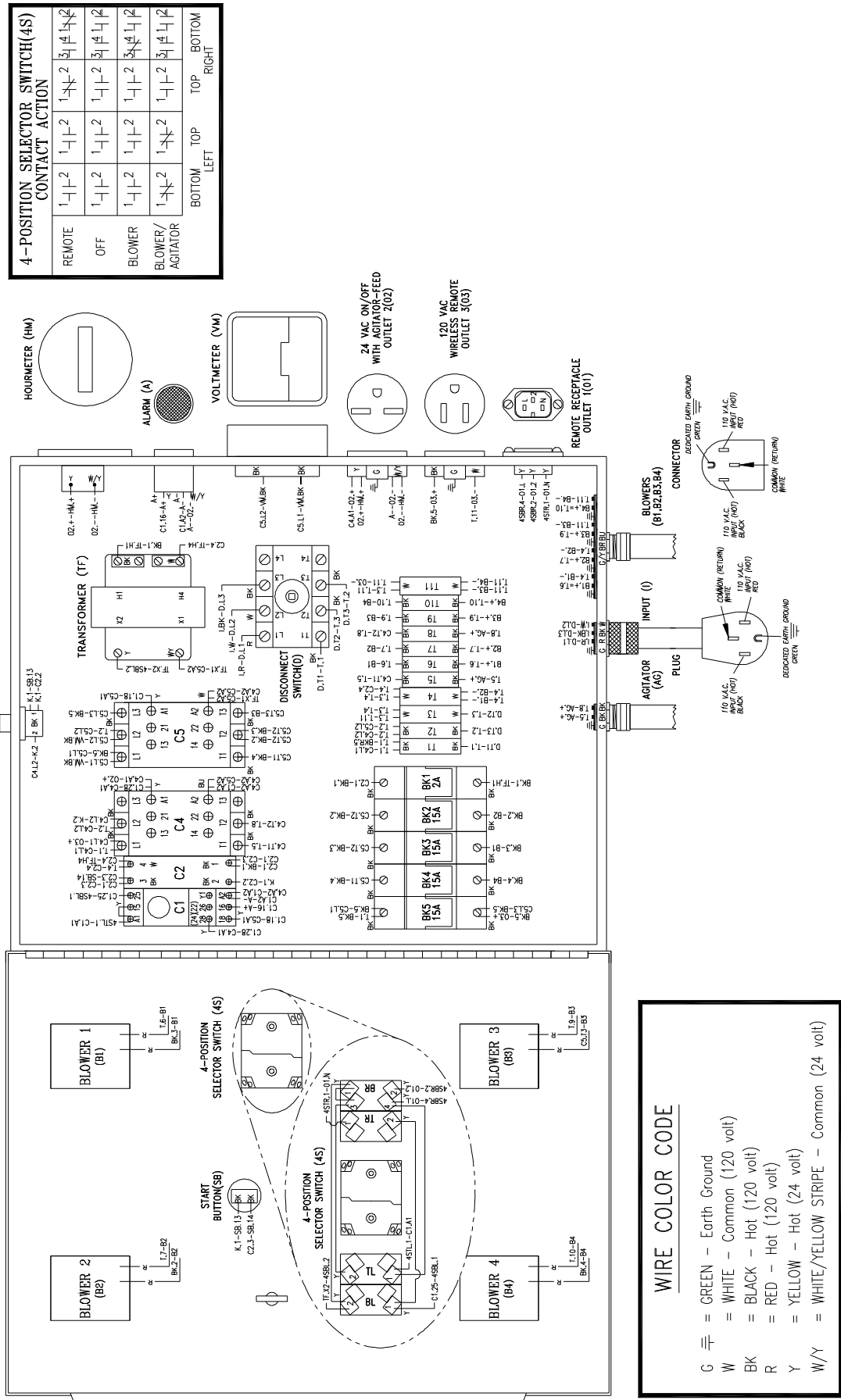
- G = GREEN - Earth Ground
- W = WHITE - Common (120 volt)
- BK = BLACK - Common (120 volt)
- R = RED - Hot (120 volt)
- Y = YELLOW - Hot (24 volt)
- W/Y = WHITE/YELLOW STRIPE - Common (24 volt)

(illustration W)

ELECTRICAL DIAGRAM:

Periodically, disconnect machine from power source and check all electrical connections and components for broken or loose wires.

MODEL #1000/2000
240 V.A.C. — 60 Hz 1Ø (4 BLOWER)

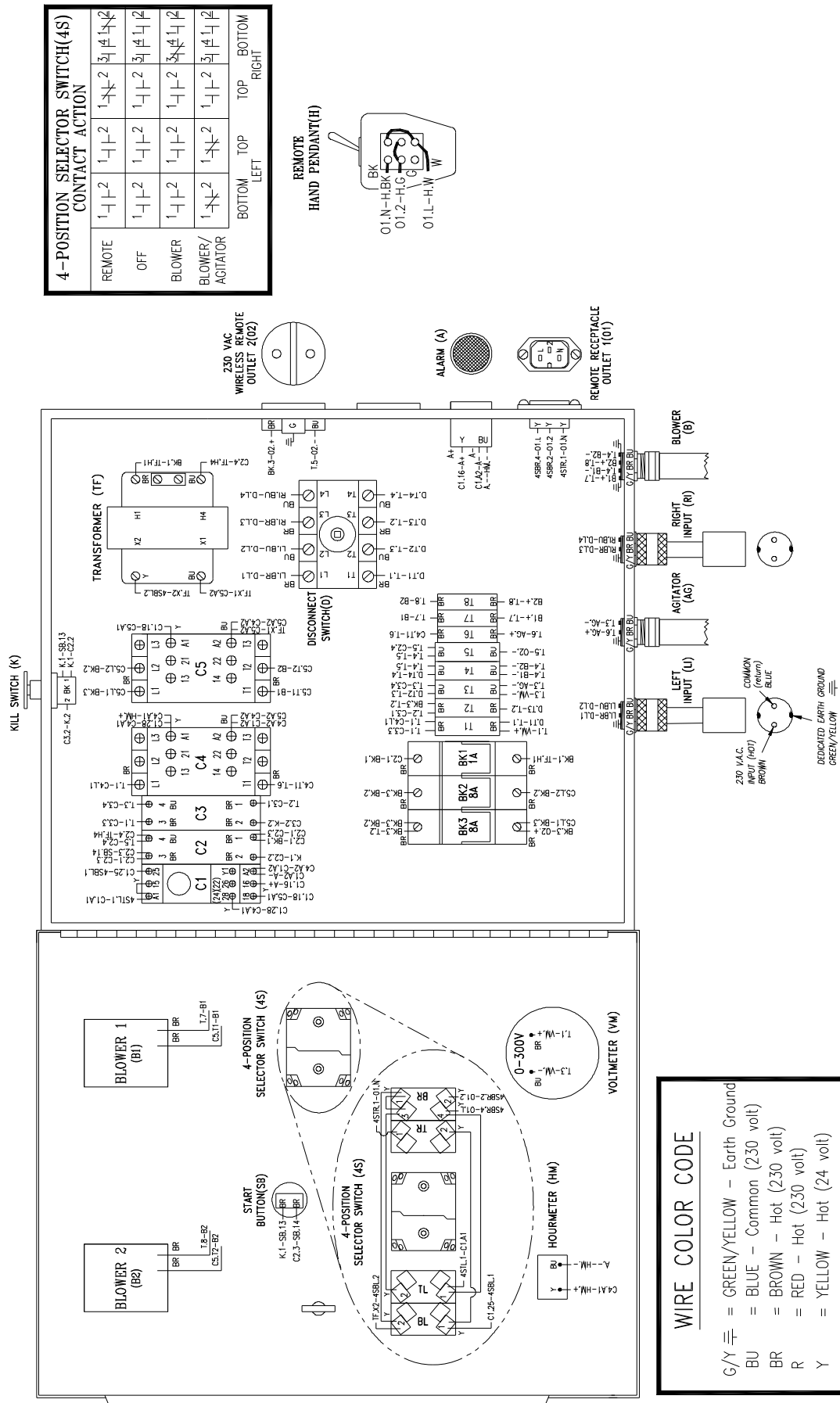


(Illustration X)

ELECTRICAL DIAGRAM:

Periodically, disconnect machine from power source and check all electrical connections and components for broken or loose wires.

MODEL #1000/2000
230 V.A.C. — 50 Hz (Double Input) 1Ø




(illustration Y)

TROUBLESHOOTING

WARRANTY

 This unit is backed by a warranty for manufacturer's defects. If machine needs service during that time, call your supplier immediately. **Do not** attempt to service, as this voids warranty.

IMPORTANT

 At any signs of trouble with your machine, stop immediately, disconnect power and call your supplier. Refer to *General Maintenance* section of this manual for further details. Always disconnect electrical power before making inspection or repairs.

Mechanical Troubleshooting

Problem

Corrective Action

- | | |
|---|--|
| 1) Loud knocking sound. | A. Check machine agitators or airlock for foreign objects and remove. Refer to <i>General Maintenance</i> to flip up hopper for access to airlock.

B. Check and retension chains. |
| 2) Poor output or uneven flow through the hose. | A. Gradually increase blower control setting and/or close slidegate until condition improves.

B. Check hose. Remove hose from airlock outlet and check for blocked material. Clean out by shaking hose. Connect hose to airlock, turn blowers on high (no agitator/feed) for a few moments and try to free blockage.

C. Check insulation hose and blower hoses on machine for damage. Check connections. Tighten hose clamps to eliminate air leakage.

D. Check for misaligned agitator tines.

E. Flip up hopper, inspect airlock seals and plates for damage or wear. Refer to page 12 and 13 of <i>General Maintenance</i> and follow instructions for replacing seals.

F. Check for proper shredder direction. (See page 12 of <i>Mechanical Settings</i> .) |
| 3) Too much dust on open blow. | A. Reduce air into system by decreasing blower control setting and opening slidegate.

B. Use internal wetting system. |

Electrical Troubleshooting

IMPORTANT



Whenever power is interrupted to unit (i.e., unplugged, main disconnect switch off, kill switch depressed), power must be restored by correcting power interruption condition and pressing *green* start button.

Problem

Corrective Action

- | | |
|--|--|
| 1) Voltmeter showing no voltage or low voltage. | A. Turn Main Disconnect Switch to ON position.
B. Check input cord(s) for proper connection to power source.
C. Check power source for proper voltage.
D. Open Main Control Box lid and check voltage with multimeter at voltmeter terminals. Replace defective voltmeter.
E. On single input, 240volt/60hz. units, check for proper wiring of four prong plug and connector body. |
| 2) Dropout relay does not engage. | A. Check voltmeter. If no voltage, refer to #1 above.
B. Check power on both input cords. (double input machines)
C. Check indicator light on solid state relay(C3). On double input machines, check the solid state relay on the right. (If light is "on", refer to #3.) |
| 3) Dropout relay is engaged(light is "on"), but machine will not run. | A. Check transformer breaker (BK1) with continuity tester.
B. Check secondary output of transformer(24volt). Replace if necessary |
| 4) Machine does not function with hand pendant while 4-Position Selector Switch is in REMOTE mode. | A. Check for proper start-up conditions as mentioned at beginning of this section. (See #2)
B. Be sure remote control cord is properly plugged into Main Control Panel.
C. Check remote control cord and hand pendant switch for damage or loose connections.
D. If neither Remote mode or Manual mode will function, check transformer breaker (breaker #1) with continuity tester. |
| 5) Blower motor does not run, but agitator motor does run. | A. Check operation in remote mode and manual mode with 4-Position Selector Switch and remote hand pendant.
B. Check blower control for ON position.
C. Check for defective, broken, or loose wiring connections inside Main Control Panel.
D. Check blower motor. Disconnect power supply and visually inspect system for defective, broken or loose wiring connections inside blower box.
E. Check blower breaker(s) in Main Control Panel with a continuity tester.
F. Check Blower Controls. Disconnect Blower Control wires on Main Control Panel door and reconnect the two power leads bypassing the Blower Control. (Blower will run full speed only.)
G. Visually inspect and/or replace blower relay(C5) inside Main Control Panel. |

Electrical Troubleshooting (cont.)

- | | |
|--|--|
| 6) Blower motor does not run in manual mode. (4-Position Selector Switch.) | A. Check wiring connections on Selector Switch contacts. (Located on back of Main Control Panel door.) |
| 7) Blower motor running hot. | A. Clean or replace Filter on Blower Door. Check inside Blower Box for debris/insulation. Blow out blower motor and surrounding area with compressed air.
B. Check material hose for blockage. A restriction in the material output hose will cause the blowers to run hotter than normal.
C. Check blower motor for proper operation. (i.e. bearings, armature, or worn brushes.) |
| 8) Excessive arcing of brushes on blower motor. | A. Blow out brush assembly area with compressed air to remove accumulation of dirt and debris.
B. Check blower motor for proper operation. (i.e. bearings, armature, etc.)
C. Replace brush assembly. (See page 15 and 16 of <i>General Maintenance</i> .) |
| 9) Agitator motor does not run, but blower motor does run. | A. Manual Reset on agitator is tripped. Disconnect power supply to machine. Wait until agitator motor cools, (approximately 15 minutes), and press button on motor to reset.
B. Check for defective, broken, or loose wiring connections inside the Main Control Panel.
C. Visually inspect and/or replace agitator relay (C4), inside Main Control Panel. |
| 10) Agitator motor running improperly or hot. | A. Disconnect power. Check agitators and airlock for debris.
B. Low voltage. Try another electrical source. Use proper wire size for power input cords.
C. Check bearings, sprocket and chain for binding, failure, or drive system misalignment.
D. Remove vertical drive chain from airlock and upper agitators. Run motor/reducer and airlock assembly under power. Check amperage.
E. Make sure the voltage, cycle (hertz), phase (1 or 3), and direction of rotation is correct.
F. Replace agitator motor and/or speed reducer. |
| 11) Agitator or airlock feeder not turning. | A. Check sprockets for missing key. Replace with 1/4" key.
B. Chain broken or off sprocket. Repair or replace.
C. Check gearbox for sheared key between motor and reducer. |
| 12) Pre-alarm sounds too long or continues without activating machine. | A. Pre-alarm relay C1 (timer relay with knob adjustment), should be turned counterclockwise/left. This will reduce time duration of alarm.
B. Replace relay module. |

PARTS LIST

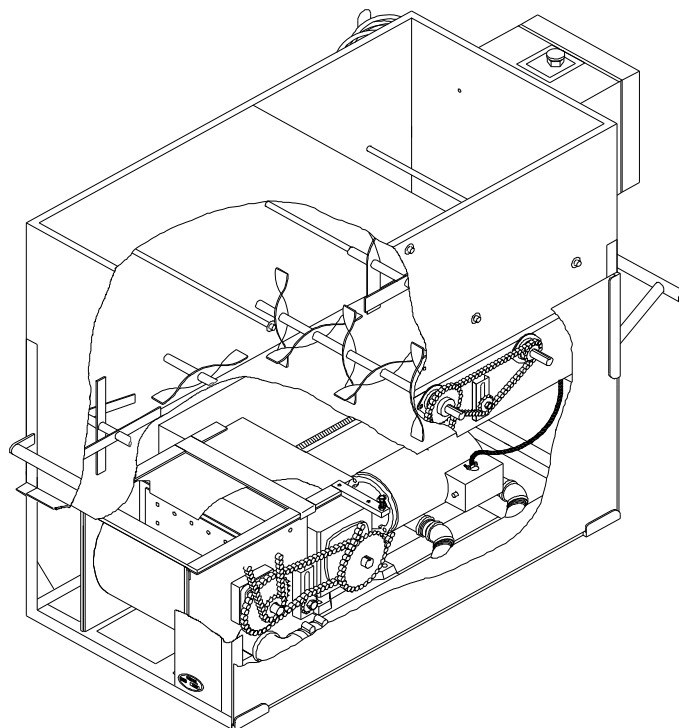
The manufacturer recommends that all repairs be made at its own factory service center. Machine repair done by the manufacturer is warranted for 90 days on repair parts and workmanship.

If you choose to have repairs made elsewhere, we offer replacement parts that have been carefully inspected to insure they meet the specifications of the original part. Any disassembly and reassembly of the unit to replace the defective part must be done with care to insure proper fit and alignment. No warranty consideration will be extended on parts that appear to be mishandled. All units should be run for a few minutes without material to insure proper alignment. All questions regarding replacement of parts should be directed back to the factory.

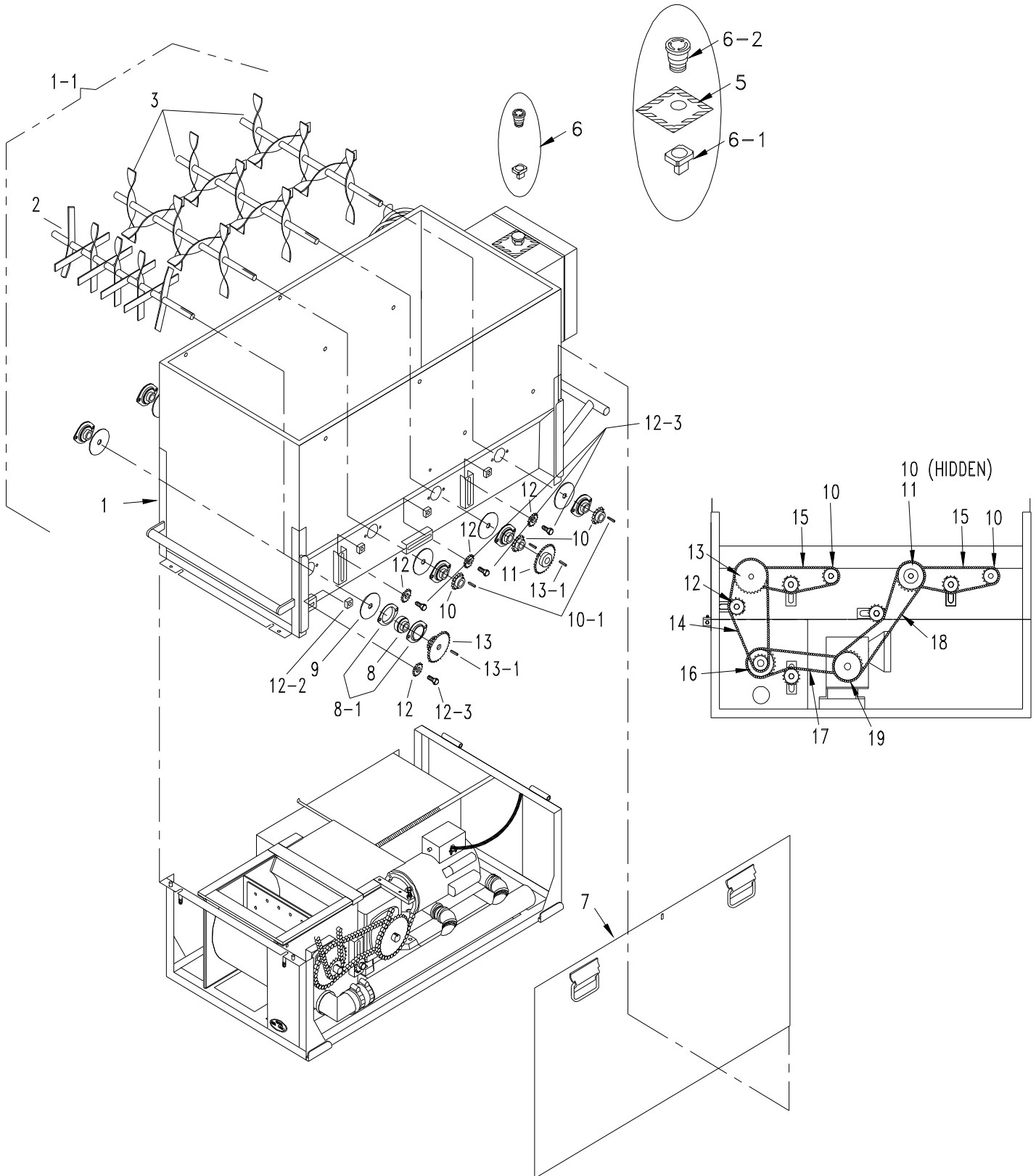
IMPORTANT: Certain information is needed concerning your specific machine when ordering replacement parts:

- Machine Model number (i.e. Model #1000) • Serial Number
- Date Purchased
- Voltage of unit (main input): 120V, 240V or 230V(overseas) - single, double, or triple input
- Main input power - single phase (1Ø) or three phase (3Ø).
- Cycle: 50 or 60 hz. (U.S. and North American models are 60 hz.)
(**Most** overseas units are 50 hz. Check invoice for correct cycle.)
- Blowers: two or four
- With or without shredder

If this information is not known, contact supplier with serial number of machine. This information is needed on mechanical parts as well as electrical components. (Due to mechanical adjustments that compensate for electrical requirements, the above information is needed.)



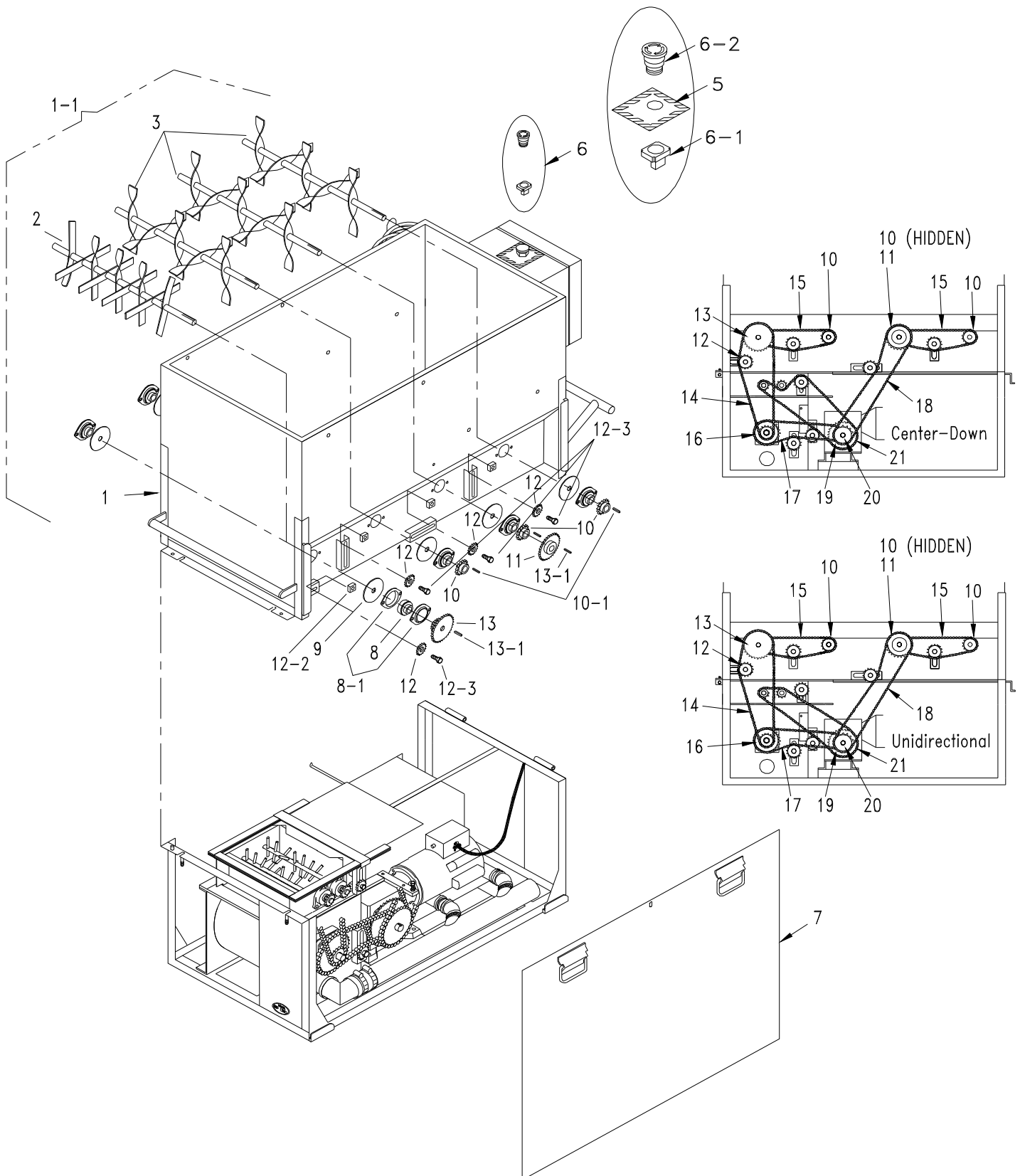
NON SHREDDER UPPER HOPPER and DRIVE ASSEMBLY



NON SHREDDER UPPER HOPPER and DRIVE ASSEMBLY PARTS LIST

Item #	Part #	Description
1	109001	Hopper
1-1	109001-ASSY	Hopper Assembly (includes: agitators, bearings, felt washers and flanges)
2	109002-1	Agitator, Shredder, 1"
3	109003-1	Agitator, Front and Middle, 1" (3)
5	KMC-012	Decal, Kill Switch
6	508	Kill Switch, Assembly (includes: Contact and Pushbutton-decal not included)
6-1	508-1	Contact, Kill Switch (Telemecanique)
6-2	508-2	Pushbutton, Kill Switch (Telemecanique)
7	109007	Guard, Side Screen
8	563	Bearing Insert, 1" (8)
8-1	565	Housing, Flange, 2-Bolt, 1" (16)
9	564	Seal, Felt, 1" X 3 1/4" (8)
10	S-50BS15-A	#50 Sprocket, 15T x 1" (3) (agitator)
10-1	561	Key, 1/4" x 1/4" x 1" (3)
11	150510	#50 Sprocket, 25T x 1"
11	109901-A	#50 Sprocket, 15T x 20T x 1" (overseas)
12	150513	#50 Sprocket, Idler, 15T x 5/8" (5)
12-2	40052	Nut, 1/2-13 x 1" Square (5)
12-3	FSB120	Shoulder Bolt, 5/8" x 3/4" (5)
13	109904-A	#50 Sprocket, 15-28T x 1" (agitator)
13-1	562	Key, 1/4" x 1/4" x 1 1/4" (3)
14	109801	Chain, #50 x 38 1/2"
15	109800	Chain, #50 x 32 1/2" (2)
16	109907-A	#50 Sprocket, 15T x 25T x 1" w/spacer
16	109908-A	#50 Sprocket, 15T x 20T x 1" w/spacer (overseas)
17	109801	Chain, #50 x 38 1/2" (half link sold separately) (airlock to reducer)
17	109811	Chain, #50 x 37 1/2" (airlock to reducer) (overseas)
18	109806	Chain, #50 x 47 1/4" (reducer to hopper)
18	2502028	Chain, #50 x 41" (reducer to hopper) (overseas)
19	109902-A	#50 Sprocket, 15-26T x 1 1/8", (speed reducer)
--	190	#50 Connector/Master Half links (not shown)
--	150526	#50 Connector/Master Link, 1 per chain (not shown)
--	DCL1000-1	Decal set for 120 Volt machine (not shown)
--	DCL1000-2	Decal set for 240 or 230 Volt machine (not shown)

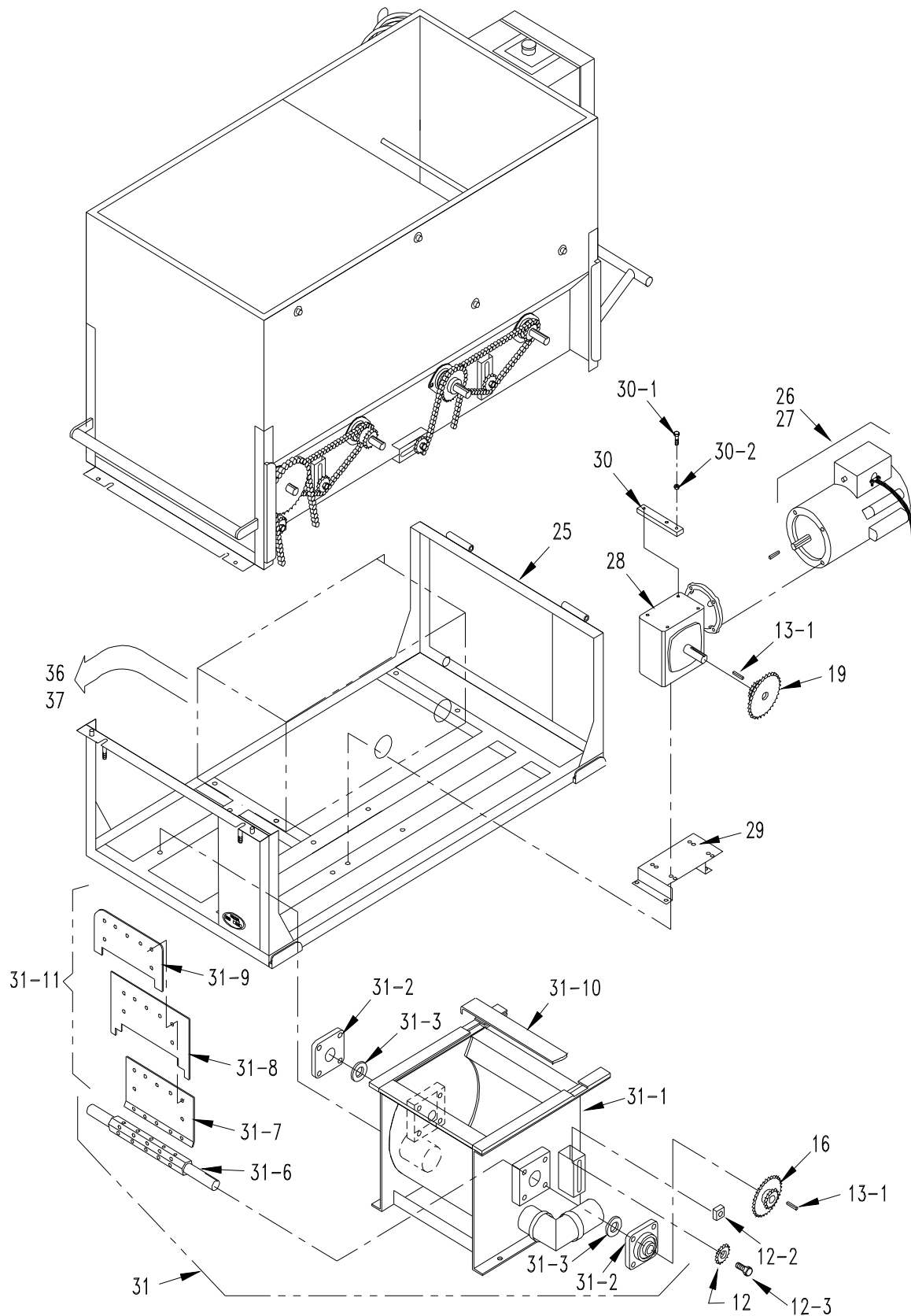
SHREDDER UPPER HOPPER and DRIVE ASSEMBLY



SHREDDER UPPER HOPPER and DRIVE ASSEMBLY PARTS LIST

Item #	Part #	Description
1	109001	Hopper
1-1	109001-ASSY	Hopper Assembly (includes: agitators, bearings, felt washers and flanges)
2	109002-1	Agitator, Shredder, 1"
3	109003-1	Agitator, Front and Middle, 1" (3)
5	KMC-012	Decal, Kill Switch
6	508	Kill Switch, Assembly (includes: Contact and Pushbutton-decal not included)
6-1	508-1	Contact, Kill Switch (Telemecanique)
6-2	508-2	Pushbutton, Kill Switch (Telemecanique)
7	109008	Guard, Side Screen
8	563	Bearing Insert, 1" (8)
8-1	565	Housing, Flange, 2-Bolt, 1" (16)
9	564	Seal, Felt, 1" X 3 1/4" (8)
10	S-50BS15-A	#50 Sprocket, 15T x 1" (3) (agitator)
10-1	561	Key, 1/4" x 1/4" x 1" (3)
11	150510	#50 Sprocket, 25T x 1"
11	109901-A	#50 Sprocket, 15T x 20T x 1" (overseas)
12	150513	#50 Sprocket, Idler, 15T x 5/8" (5)
12-2	40052	Nut, 1/2-13 x 1" Square (5)
12-3	FSB120	Shoulder Bolt, 5/8" x 3/4" (5)
13	109904-A	#50 Sprocket, 15-28T x 1" (agitator)
13-1	562	Key, 1/4" x 1/4" x 1 1/4" (3)
14	109806	Chain, #50 x 47 1/4"
15	109800	Chain, #50 x 32 1/2" (2)
16	109907-A	#50 Sprocket, 15T x 25T x 1" w/spacer
16	109908-A	#50 Sprocket, 15T x 20T x 1" w/spacer (overseas)
17	109805	Chain, #50 x 40" (half link sold separately) (airlock to reducer)
17	109811	Chain, #50 x 37 1/2" (airlock to reducer) (overseas)
18	109808	Chain, #50 x 53 1/2" (reducer to hopper)
18	8034	Chain, #50 x 52" (reducer to hopper) (overseas)
19	109903-A	#50 Double Sprocket, 40T x 17T x 1 1/8", (speed reducer)
20	S-50BS22	#50 Sprocket, 22T x 1 1/8", (speed reducer)
21	109809	Chain, #50 x 55" (half link sold separately) (Boston center-down rotation)
21	109813	Chain, #50 x 52 1/2" (Boston unidirectional rotation)
--	190	#50 Connector/Master Half links (not shown)
--	150526	#50 Connector/Master Link, 1 per chain (not shown)
--	DCL1000-1	Decal set for 120 Volt machine (not shown)
--	DCL1000-2	Decal set for 240 or 230 Volt machine (not shown)

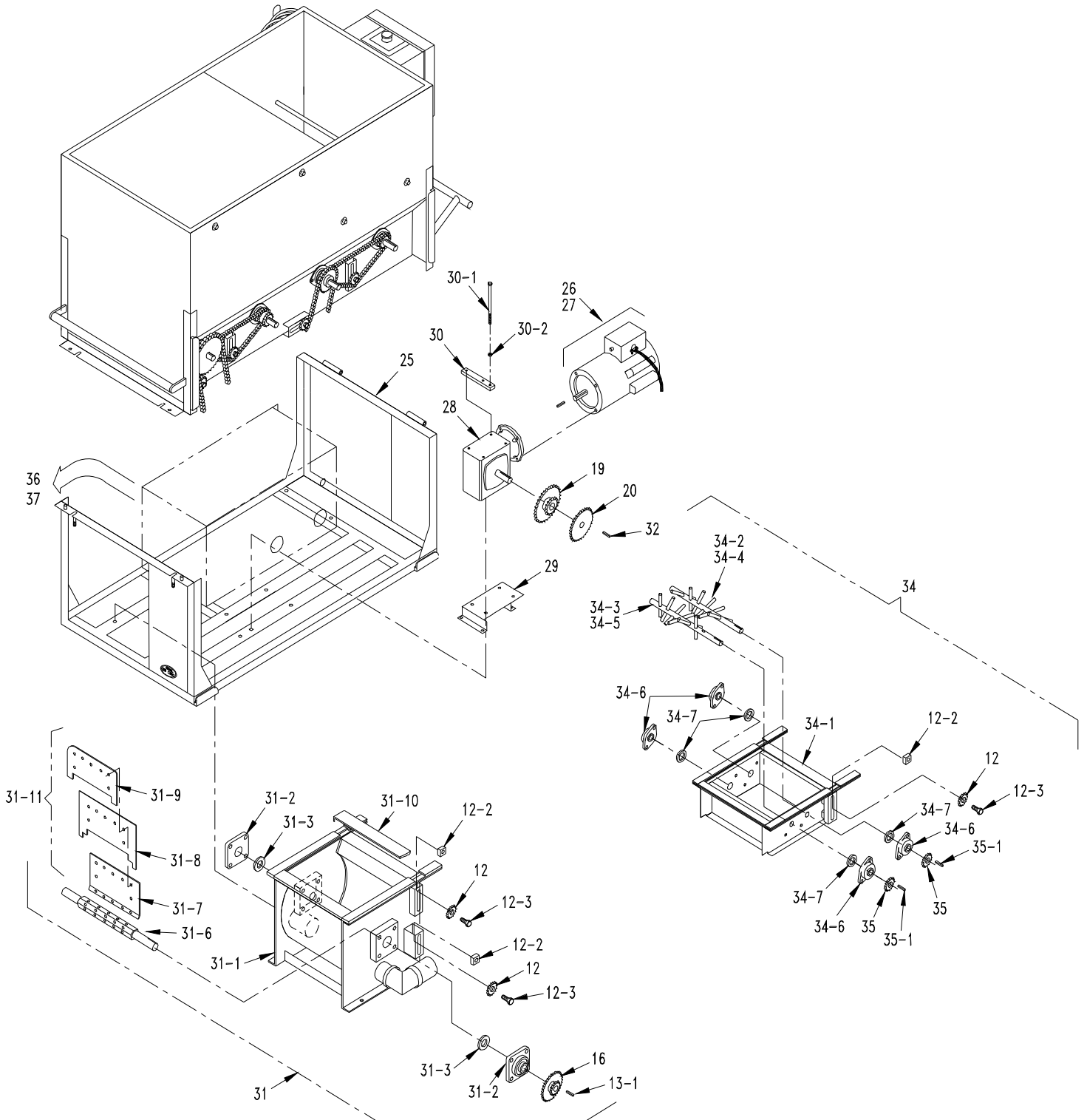
NON SHREDDER LOWER BASE UNIT ASSEMBLY



NON SHREDDER LOWER BASE UNIT ASSEMBLY PARTS LIST

Item #	Part #	Description
25	109025	Base Frame, Non Shredder
26	ELU07-R	Motor, Agitator, Assembly, 2 H.P., T.E.F.C. (240V, 60 Hz.)
26	ELU07-A-R	Motor, Agitator, Assembly, 2 H.P., T.E.F.C. (120V, 60 Hz.)
27	ELU07-Assy	Motor, Agitator, Assembly, 2 H.P., T.E.F.C. (230V, 50 Hz.)
27	ELU07-Assy-A	Motor, Agitator, Assembly, 2 H.P., T.E.F.C. (120V, 50 Hz.)
28	109028-R1	Reducer, 20:1, 1 1/8" Dia. Shaft
29	109019-5-R7	Bracket, Motor
30	109020	Support Bracket
30-1	FSB057	SB 1/2-13 x 2 1/4 HMS
30-2	FN026	N 1/2-13 Nut
Model #1000		
31	109031	Airlock Assembly
31-1	109031-1	Chamber, Airlock, 12" x 12"
31-2	517-6	Bearing, 4-Bolt Casted, 1" Bore (2)
31-3	517-7	Seal, Felt, Airlock, 1 1/4" I.D. on seal (2)
31-6	109031-6	Shaft, Airlock, 19 1/2"
31-7	109031-7	Plate, Base, Airlock, 12" (6)
31-8	109031-8M-2PLYF	Seal, Airlock, 12" (6) 1/4" 2PLY/FAB
31-9	109031-9	Plate, Top, Airlock, 12" (6)
31-10	109031-10	Spacer, Airlock, 12"
31-11	109031-8-ASSY	Seal Assembly, Airlock 12", (6) (includes: Top Plate, Base Plate, & Seal)
Model #2000		
31	209031	Airlock Assembly
31-1	209031-1	Chamber, Airlock, 12" x 16"
31-2	517-6	Bearing, 4-Bolt Casted, 1" Bore (2)
31-3	517-7	Seal, Felt, Airlock, 1 1/4" I.D. on seal (2)
31-6	209031-6	Shaft, Airlock, 23 1/2"
31-7	209031-7	Plate, Base, Airlock, 16" (6)
31-8	209031-8M-2PLYF	Seal, Airlock, 16" (6) 1/4" 2PLY/FAB
31-9	209031-9	Plate, Top, Airlock, 16" (6)
31-10	209031-10	Spacer, Airlock, 16"
31-11	209031-8-ASSY	Seal Assembly, Airlock 16", (6) (includes: Top Plate, Base Plate, & Seal)

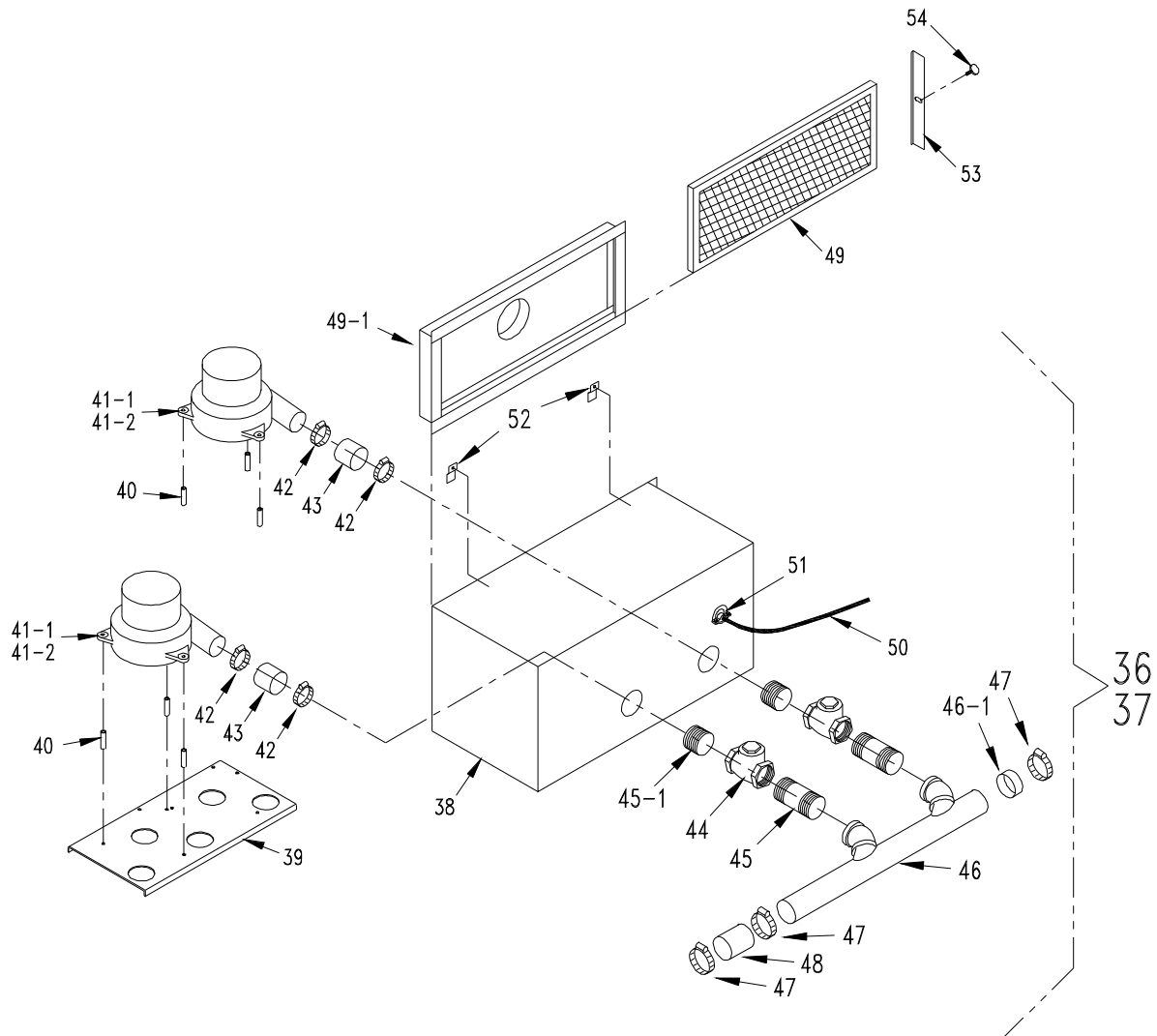
SHREDDER LOWER BASE UNIT ASSEMBLY



SHREDDER LOWER BASE UNIT ASSEMBLY PARTS LIST

Item #	Part #	Description
25	109026	Base Frame, Shredder
26	ELU07-R	Motor, Agitator, Assembly, 2 H.P., T.E.F.C. (240V, 60 Hz.)
26	ELU07-A-R	Motor, Agitator, Assembly, 2 H.P., T.E.F.C. (120V, 60 Hz.)
27	ELU07-Assy	Motor, Agitator, Assembly, 2 H.P., T.E.F.C. (230V, 50 Hz.)
27	ELU07-Assy-A	Motor, Agitator, Assembly, 2 H.P., T.E.F.C. (120V, 50 Hz.)
28	109028-R1	Reducer, 20:1, 1 1/8" Dia. Shaft
29	109019-5-R7	Bracket, Motor
30	109020	Support Bracket
30-1	FSB125	SB 1/2-13 x 7 HMS
30-2	FN026	N 1/2-13 Nut
MODEL #1000		
31	109031	Airlock Assembly
31-1	109031-1	Chamber, Airlock, 12" x 12"
31-2	517-6	Bearing, 4-Bolt Casted, 1" Bore (2)
31-3	517-7	Seal, Felt, Airlock, 1 1/4" I.D. on seal (2)
31-6	109031-6	Shaft, Airlock, 19 1/2"
31-7	109031-7	Plate, Base, Airlock, 12" (6)
31-8	109031-8M-2PLYF	Seal, Airlock, 12" (6) 1/4" 2 PLY/FAB
31-9	109031-9	Plate, Top, Airlock, 12" (6)
31-10	109031-10	Spacer, Airlock, 12"
31-11	109031-8-ASSY	Seal Assembly, Airlock 12", (RhinoHyde) (6) (includes: Base Plate, Top Plate, & Seal)
MODEL #2000		
31	209031	Airlock Assembly
31-1	209031-1	Chamber, Airlock, 12" x 16"
31-2	517-6	Bearing, 4-Bolt Casted, 1" Bore (2)
31-3	517-7	Seal, Felt, Airlock, 1 1/4" I.D. on seal (2)
31-6	209031-6	Shaft, Airlock, 23 1/2"
31-7	209031-7	Plate, Base, Airlock, 16" (6)
31-8	209031-8M-2PLYF	Seal, Airlock, 16" (6) 1/4" 2 PLY/FAB
31-9	209031-9	Plate, Top, Airlock, 16" (6)
31-10	209031-10	Spacer, Airlock, 16"
31-11	209031-8-ASSY	Seal Assembly, Airlock 16", (RhinoHyde) (6) (includes: Base Plate, Top Plate, & Seal)
32	109080	Key, 1/4" x 1/4" x 2 1/8"
34	109019-3-A-Assy	Shredder Box Assembly, (Model #1000)
34	209019-3-A-Assy	Shredder Box Assembly, (Model #2000)
34-1	109019-3-A	Shredder Box, 12" (Model #1000)
34-1	209019-3-A	Shredder Box, 16" (Model #2000)
34-2	109019-2-B-R1	Agitator, Shredder Box, (Model #1000 16" — 7 tines)(on right from drive side)
34-3	109019-1-B-R1	Agitator, Shredder Box, (Model #1000 16" — 6 tines)(on left from drive side)
34-4	209019-1-B-R1	Agitator, Shredder Box, (Model #2000 20" — 10 tines)(on right from drive side)
34-5	209019-2-B-R1	Agitator, Shredder Box, (Model #2000 20" — 9 tines)(on left from drive side)
34-6	426-6	Bearing, 3/4" 2-bolt Casted Bearing (4)
34-7	426-7	Seal, Felt, (4)
35	S-50BS10	#50 Sprocket, 10T x 3/4" (2) (shredder box)
35-1	448	Key, 3/16" x 7/8" (2)

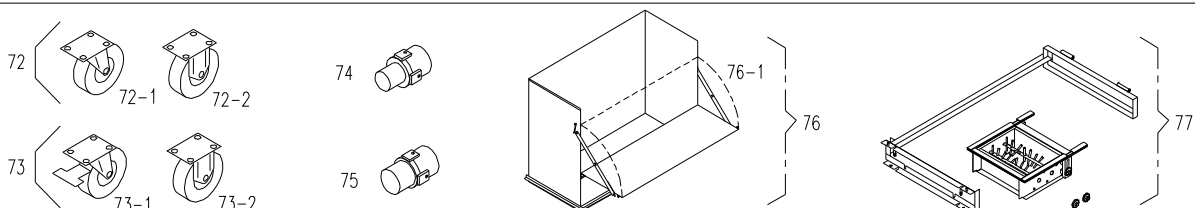
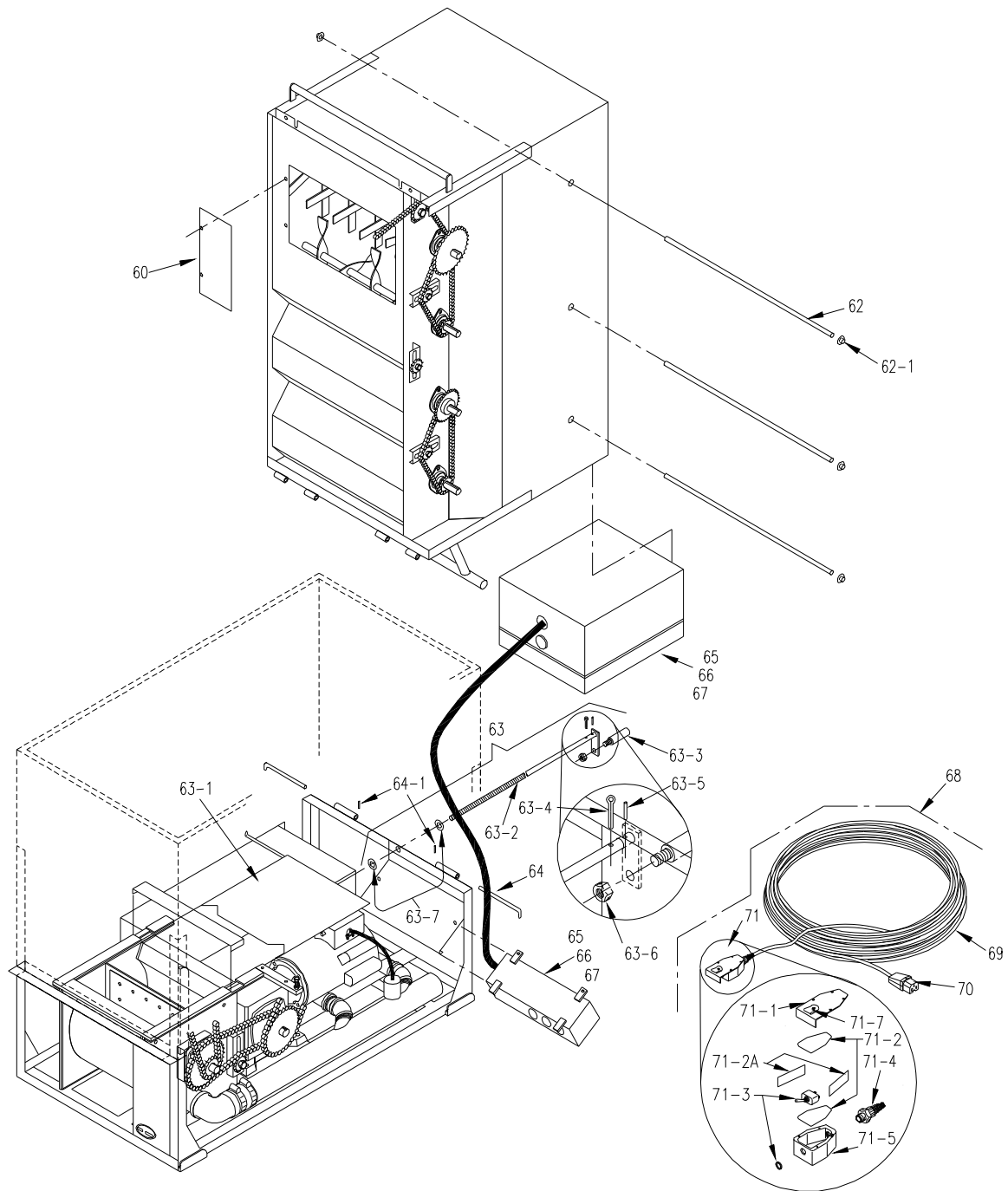
BLOWER BOX ASSEMBLY



BLOWER BOX ASSEMBLY PARTS LIST

Item #	Part #	Description
36	109614-M2	Box, Blower, Complete w/Conduit (120V, 60 Hz.) (double 12.5 A 3-stage blowers)
37	109616-M	Box, Blower, Complete w/Conduit (230V, 50 Hz.) (double 5.5 A 3-stage blowers)
38	109608	Box, Blower
39	109079	Bracket, Blower
40	409-D	Spacer, Blower (2 1/2") (large blower) (6)
41-1	408-E	Blower Motor, 12.5 A (120V, 50/60 Hz.) 3-stage (2)
41-2	408-F	Blower Motor, 6 A (230V, 50/60 Hz.) 3-stage (2)
42	337	Clamp, Hose, 2" (4)
43	4534	Hose, Hard Rubber 2" x 3" (2)
44	405*	Check Valve (2)
45	109625	Nipple, 1 1/2" x 3 1/2" (2)
45-1	57801	Nipple, Close, 1 1/2" (2)
46	109609	Manifold, Blower Box
46-1	109605	Cap, 2 1/2" Air Manifold
47	339	Clamp, 2 1/2" Hose (3)
48	109604	Hose, Hard Rubber 2 1/2" x 5"
49	109602	Filter, Blower 10" x 24" x 1"
49-1	109601-R1	Shroud, Blower, 4" Input
50	543-M-75	Conduit, 1/2" Flexible, 36" Long
51	543-M-18	Connector, Conduit, 1/2" Straight
52	536-1	Clip, Short Filter (2)
53	109601-1	Cover, Blower Shroud End
54	FSB208	Thumbscrew, 5/16" x 1"

MECHANICAL and ELECTRICAL CONTROL ASSEMBLY/OPTIONS



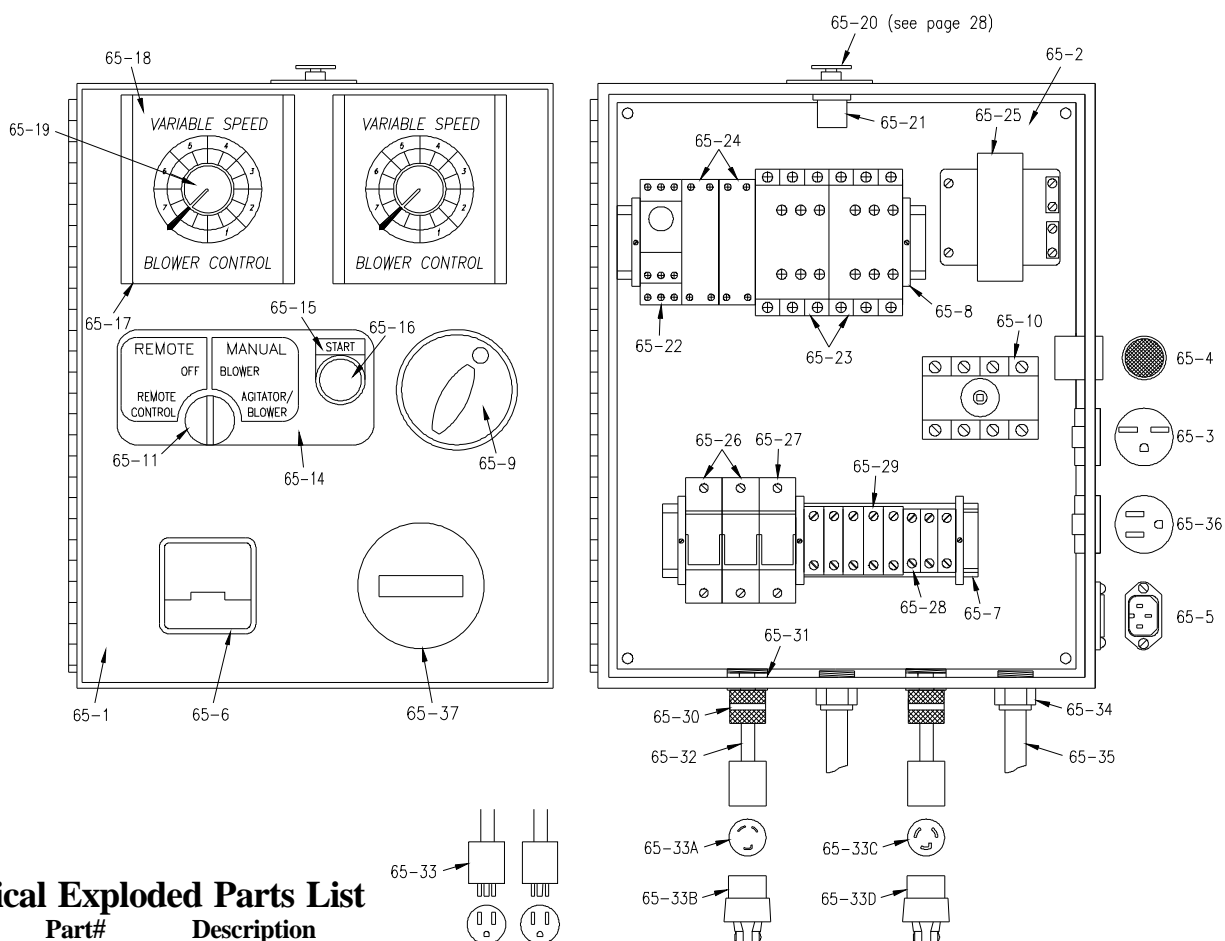
MECHANICAL and ELECTRICAL CONTROL ASSEMBLY/OPTIONS PARTS LIST

Item #	Part #	Description
60	109060	Plate, Throat (Model #1000 only)
62	110	Hopper Bar (3)
62-1	FN009	Pushnut, 1/2" (6)
63	109063	Slidegate Assembly (Model #1000)
63	209063	Slidegate Assembly (Model #2000)
63-1	109063-1	Slidegate, 12" (#1000)
63-1	209063-1	Slidegate, 16" (Model #2000)
63-2	109063-2	Crankrod w/Handle Bracket
63-3	4507	Handle, Crankrod
63-4	FSB078	Pin, Cotter, 1/8" x 1"
63-5	FSB079	Pin, Roll, 5/32" x 3/4"
63-6	FN015	Nut, 3/8" - 16 Lock
63-7	FW012	Washer, 1/2" Flat (2)
64	541	Pin, Hinge (2) 7/16" x 8" (2)
64-1	FSB080	Pin, Roll, 5/32" x 5/8" (2)
65	ELU07-109068	Electrical Upgrade (120V, 60 Hz.) (double input 20 A & 30 A, double 12.5 A)
66	ELU07-109070	Electrical Upgrade (240V, 60 Hz.) (single input, double 12.5 A blowers)
66-1	ELU07-109071	Electrical Upgrade (240V, 60 Hz.) (single input 50 A 4 blower 12.5 A)
67	ELU07-109072	Electrical Upgrade (230V, 50 Hz.) (double input, double 6 A blowers) (See sub-assembly on page 35) (Note: Remote Control Cord -- not included)
67	ELU07-109073	Electrical Upgrade (230V, 50 Hz.) (triple input, (4) 6 A blowers) (See sub-assembly on page 36) (Note: Remote Control Cord -- not included)
68	ELU95-395C-D	Cord, Remote Control, Complete Style D 150 Ft.
69	109069	Cord, #18-3(SJ) x 150 Ft.
70	543-M-8	Plug, #509-1215 Style D
71	1536-A	Hand Pendant, Remote Control, Complete
71-1	1536-1-A	Cover, Hand Pendant Switch
71-2	1536-2	Insulator (2)
71-2A	1536-2A	Insulator Strip (2)
71-3	109066-9	Switch, Toggle (DPDT)
71-4	1536-4	Cord Restraint, 3/8"
71-5	1536-5	Housing, Switch
71-7	1536-7	Clip, Belt
71-8	FSB003	Machine Screw, 6-32 x 1/4" Round Head (4)

OPTIONS

72	W-5-STD	Wheel Package, Standard, 5"
72-1	551-1	Wheel, Standard, Swivel, 5" (2)
72-2	551-2	Wheel, Standard, Rigid, 5" (2)
73	W-5-HD	Wheel Package, Heavy Duty, 5"
73-1	109073-1	Wheel, Heavy Duty, Swivel, 5" w/Brakes (2)
73-2	109073-2	Wheel, Heavy Duty, Rigid, 5" (2)
74	109074	Reducer, Bushing, 2"
75	109075	Reducer, Bushing, 2 1/2"
76	US-1000/2000	Hopper Extension Assy (U.S.)
76	CE-1000/2000	Hopper Extension Assy (Overseas)
76-1	109078-1	Hopper Extension
77	109019-C	Shredder Assembly (Model #1000) (See page 41 for parts list)
77	209019-C	Shredder Assembly (Model #2000) (See page 41 for parts list)
78	596	Meter, Hour (not shown)
78-1	109812	Upgrade Kit, (#50 Chain - Rockwool) (not shown)

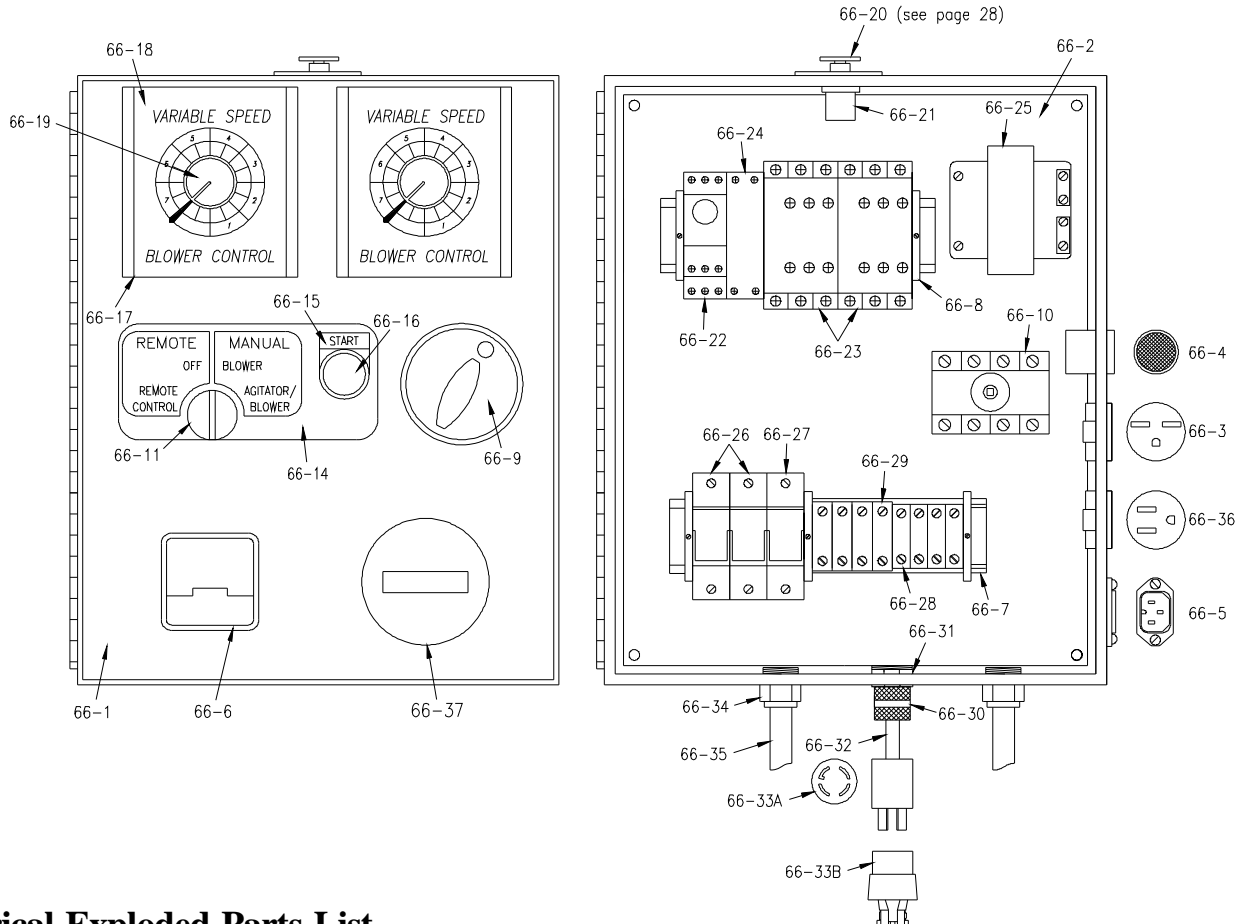
120 V.A.C. 60 Hz. ELECTRICAL UPGRADE PARTS LIST



Electrical Exploded Parts List

Item#	Part#	Description	Item#	Part#	Description
65-1	543-M-31	Box, Electrical 14" x 14" x 7"	65-22	ELU06-6	Timer, 24 VAC
65-2	543-M-31-1	Plate, Backing for Electric Box	65-23	ELU06-5	Relay, 24 VAC (2)
65-3	132-B	Receptacle, NEMA #6-15R	65-24	ELU06-7	Relay, 240V. Solid State (2)
65-4	543-M-38	Alarm for Pre-Alarm System, 24V	65-25	1530-D	Transformer, 4A
65-5	543-M-2	Receptacle, RC Plug #509-1050 (remote)	65-26	BRKR-15	Breaker, 15AMP (2)
65-6	1531-A	Voltmeter, 0-150V	65-27	BRKR-2	Breaker, 2AMP
65-7	RM-DINRAIL-A	Dinrail, 1 3/8"	65-28	151080-61	Terminal Block, Small (3)
65-8	151080-49	Clamp, f/ 1 3/8" Din Rail (4)	65-29	151080-62	Terminal Block Large (5)
65-9	543-M-33-D*	Operator Handle Assembly	65-30	543-M-23	Connector, Cord, Liq. Tite, 1/2" Straight (2)
65-10	543-M-33-D	Switch, Disconnect 40A #XA324BY	65-31	391N-A-3	Locknut, Steel, Conduit, 1/2" (2)
65-11	543-M-22	Switch, 4-position Selector	65-32	10-3 SJ	Cord, 10-3SJ
65-12	543-M-15	Contact Block, Selector Switch (white) #KA-1 (not shown)	65-33	127	Plug, NEMA #5-15P (2) (8A blowers)
65-13	543-M-16	Contact Block, Selector Switch (red) #KA-3 (3) (not shown)	65-33A	109065-19	Plug, NEMA #L5-20P (12.5A blowers)
65-14	KMC-068	Decal, (Remote/Manual - 4-Position)	65-33B	109065-20	Connector, NEMA #L5-20C
65-15	543-M-60	Start Legend Plate	65-33C	125	Plug, NEMA #L5-30P (12.5A blowers)
65-16	543-M-59	Switch, Pushbutton On	65-33D	124	Connector, NEMA #L5-30C
65-17	419-A	Blower Control (120V, 60Hz.) (2)	65-34	543-M-18	Connector, Conduit, 1/2" Straight (2)
65-18	420-1	Cover, Blower Control (2)	65-35	543-M-75	Conduit, 1/2" Flexible
65-19	420-2	Knob, Blower Control (2)	65-36	1544	Receptacle, NEMA # 5-15R
65-20	508-2	Switch, Kill	65-37	7-21	Hourmeter, 50/60Hz 35 CPS
65-21	8075-1	Contact, Kill Switch	65-38	543-M-31-2	Alarm Mount (Not Shown)
			65-39	ELU06-1	Cover, Transformer (not shown)

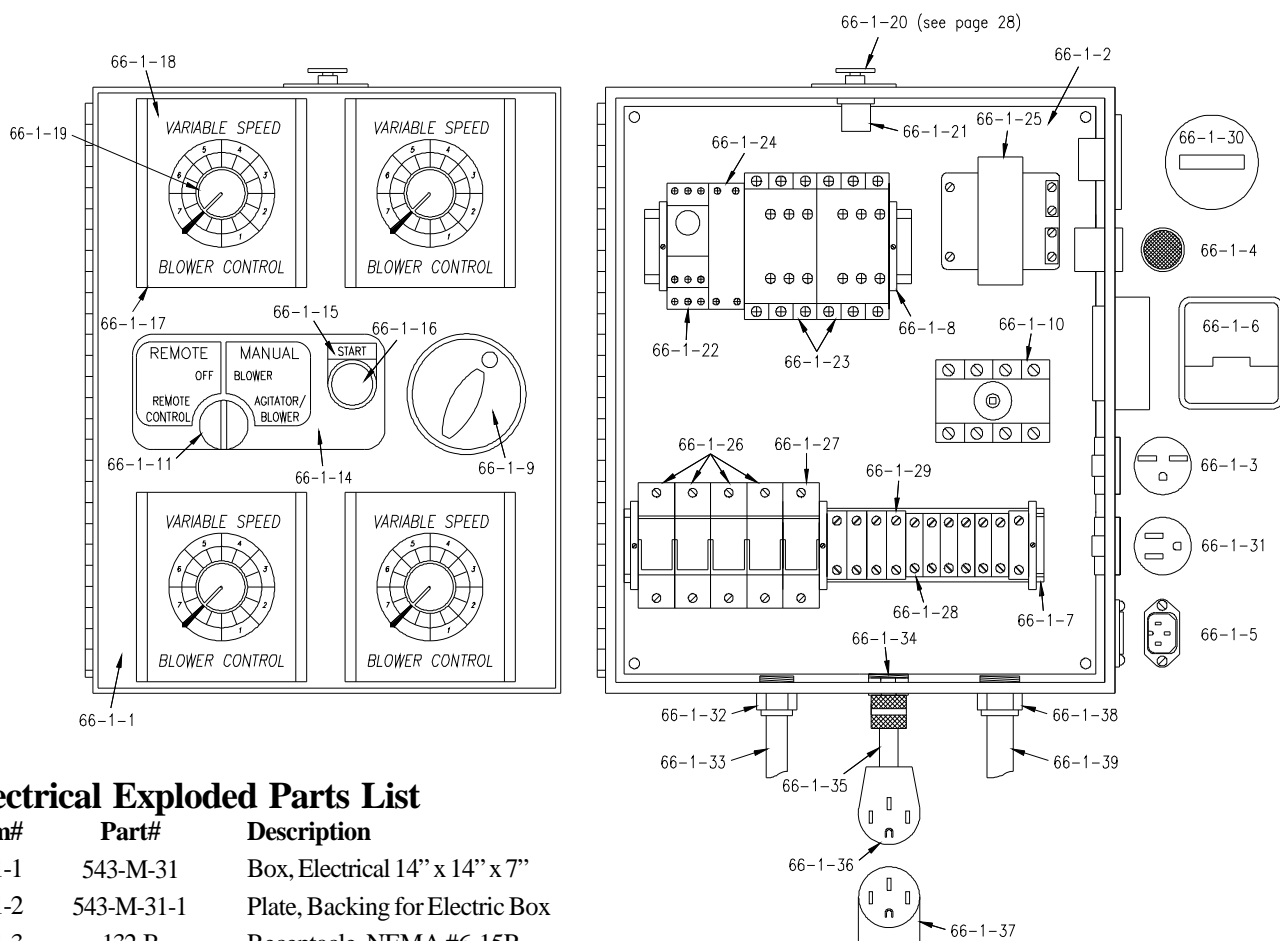
240 V.A.C. 60 Hz. ELECTRICAL UPGRADE PARTS LIST



Electrical Exploded Parts List

Item#	Part#	Description	Item#	Part#	Description
66-1	543-M-31	Box, Electrical 14" x 14" x 7"	66-20	508-2	Switch, Kill
66-2	543-M-31-1	Plate, Backing for Electric Box	66-21	8075-1	Contactor, Kill Switch
66-3	132-B	Receptacle, NEMA #6-15R	66-22	ELU06-6	Timer, 24 VAC
66-4	543-M-38	Alarm for Pre-Alarm System, 24V	66-23	ELU06-5	Relay, 24 VAC (2)
66-5	543-M-2	Receptacle, RC Plug #509-1050 (remote)	66-24	ELU06-7	Relay, 240V. Solid State
66-6	1531-B	Voltmeter, 0-300V	66-25	1530-D	Transformer, 4A
66-7	RM-DINRAIL-A	Dinrail, 1 3/8"	66-26	BRKR-15	Breaker, 15AMP (2)
66-8	151080-49	Clamp, f/ 1 3/8" Din Rail (4)	66-27	BRKR-2	Breaker, 2AMP
66-9	543-M-33-D*	Operator Handle Assembly	66-28	151080-61	Terminal Block, Small (4)
66-10	543-M-33-D	Switch, Disconnect 40A #XA324BY	66-29	151080-62	Terminal Block Large (4)
66-11	543-M-22	Switch, 4-position Selector	66-30	543-M-23	Connector, Cord, Liq. Tite, 1/2" Straight
66-12	543-M-15	Contact Block, Selector Switch (white) #KA-1 (not shown)	66-31	391N-A-3	Locknut, Steel, Conduit, 1/2"
66-13	543-M-16	Contact Block, Selector Switch (red) #KA-3 (3) (not shown)	66-32	8-4 SJ	Cord, 8-4SJ
66-14	KMC-068	Decal, (Remote/Manual - 4-Position)	66-33A	109066-16	Plug, NEMA #L14-30P
66-15	543-M-60	Start Legend Plate	66-33B	109066-17	Connector, NEMA #L14-30C
66-16	543-M-59	Switch, Pushbutton On	66-34	543-M-18	Connector, Conduit, 1/2" Straight (2)
66-17	419-A	Blower Control (120V, 60Hz.) (2)	66-35	543-M-75	Conduit, 1/2" Flexible
66-18	420-1	Cover, Blower Control (2)	66-36	1544	Receptacle, NEMA# 5-15R
66-19	420-2	Knob, Blower Control (2)	66-37	7-21	Hourmeter, 50/60Hz 35 CPS
			66-38	543-M-31-2	Alarm Mount (not shown)
			66-39	ELU06-1	Cover, Transformer (not shown)

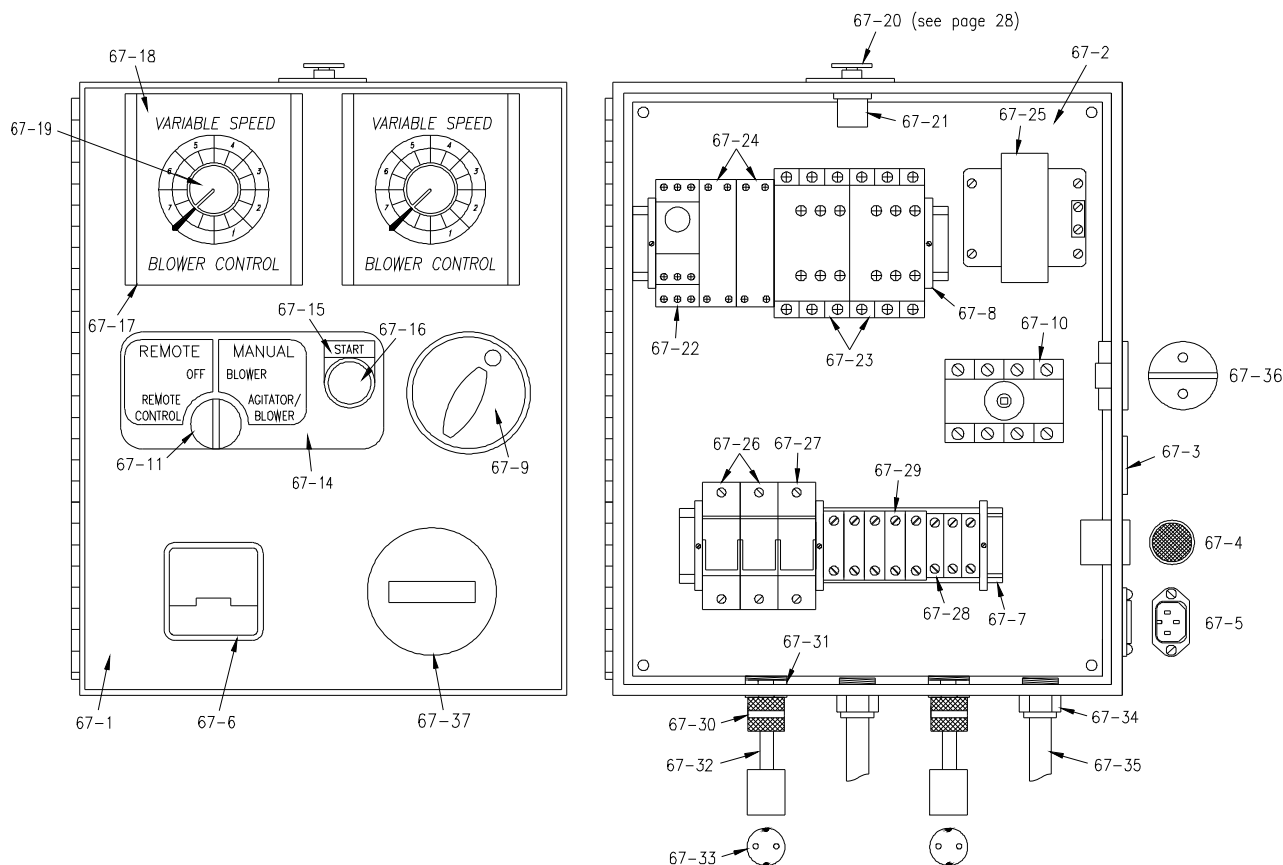
240 V.A.C. 60 Hz. 4 BLOWER ELECTRICAL UPGRADE PARTS LIST



Electrical Exploded Parts List

Item#	Part#	Description	Item#	Part#	Description
66-1-1	543-M-31	Box, Electrical 14" x 14" x 7"	66-1-22	ELU06-6	Timer, 24 VAC
66-1-2	543-M-31-1	Plate, Backing for Electric Box	66-1-23	ELU06-5	Relay, 24 VAC (2)
66-1-3	132-B	Receptacle, NEMA #6-15R	66-1-24	ELU06-7	Relay, 240V. Solid State
66-1-4	543-M-38	Alarm for Pre-Alarm System, 24V	66-1-25	1530-D	Transformer, 4A
66-1-5	543-M-2	Receptacle, RC Plug #509-1050 (remote)	66-1-26	BRKR-15	Breaker, 15AMP (4)
66-1-6	1531-B	Voltmeter, 0-300V	66-1-27	BRKR-2	Breaker, 2AMP
66-1-7	RM-DINRAIL-A	Dinrail, 1 3/8"	66-1-28	151080-61	Terminal Block, Small (6)
66-1-8	151080-49	Clamp, f/ 1 3/8" Din Rail (4)	66-1-29	151080-62	Terminal Block Large (5)
66-1-9	543-M-33-D*	Operator Handle Assembly	66-1-30	7-21	Hourmeter, 50/60Hz 35 CPS
66-1-10	543-M-33-D	Switch, Disconnect 40A #XA324BY	66-1-31	1544	Receptacle, NEMA #5-15R
66-1-11	543-M-22	Switch, 4-position Selector	66-1-32	543-M-18	Connector, Conduit, 1/2" Straight
66-1-12	543-M-15	Contact Block, Selector Switch (white) #KA-1 (not shown)	66-1-33	543-M-75	Conduit, 1/2" Flexible
66-1-13	543-M-16	Contact Block, Selector Switch (red) #KA-3 (3) (not shown)	66-1-34	8021-6	Connector, Cord, 3/4" Liq. Tite, Straight
66-1-14	KMC-068	Decal, (Remote/Manual - 4-Position)	66-1-35	8-4 SJ	Cord, Input #8-4 (SJ)
66-1-15	543-M-60	Start Legend Plate	66-1-36	109610	Angle Plug, 6-50P
66-1-16	543-M-59	Switch, Pushbutton On	66-1-37	109611	Connector, 6-50C
66-1-17	419-A	Blower Control (120V, 60Hz.) (2)	66-1-38	151080-64	Connector, Conduit, 3/4" Straight
66-1-18	420-1	Cover, Blower Control (2)	66-1-39	543-M-68	Conduit, 3/4" Carflex
66-1-19	420-2	Knob, Blower Control (2)	66-1-40	550-3	Guard, Voltmeter (Not Shown)
66-1-20	508-2	Switch, Kill			
66-1-21	8075-1	Contact, Kill Switch			

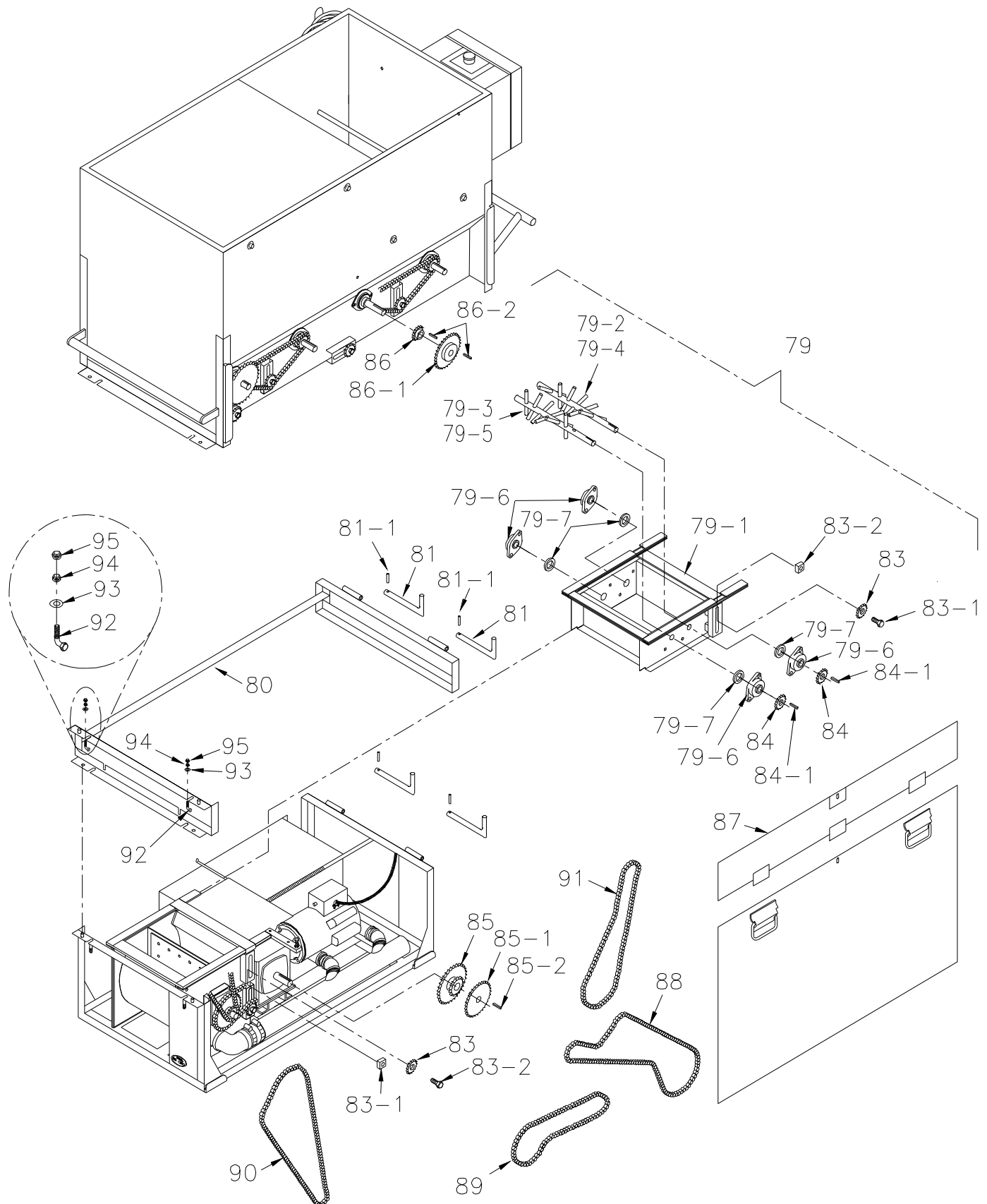
230 V.A.C. 50 Hz. ELECTRICAL UPGRADE PARTS LIST



Electrical Exploded Parts List

Item#	Part#	Description	Item#	Part#	Description
67-1	543-M-31	Box, Electrical 14" x 14" x 7"	67-19	420-2	Knob, Blower Control (2)
67-2	543-M-31-1	Plate, Backing for Electric Box	67-20	508-2	Switch, Kill
67-3	543-M-48	Cover Plate, f/Receptacle	67-21	8075-1	Contactor, Kill Switch
67-4	543-M-38	Alarm for Pre-Alarm System, 24V	67-22	ELU06-6	Timer, 24 VAC
67-5	543-M-2	Receptacle, RC Plug #509-1050 (remote)	67-23	ELU06-5	Relay, 24 VAC (2)
67-6	1531-B	Voltmeter, 0-300V	67-24	ELU06-7	Relay, 240V. Solid State (2)
67-7	RM-DINRAIL-A	Dinrail, 1 3/8"	67-25	1530-D	Transformer, 4A
67-8	151080-49	Clamp, f/ 1 3/8" Din Rail (4)	67-26	BRKR-8	Breaker, 8AMP (2)
67-9	543-M-33-D*	Operator Handle Assembly	67-27	BRKR-1	Breaker, 1AMP
67-10	543-M-33-D	Switch, Disconnect 40A #XA324BY	67-28	151080-61	Terminal Block, Small (3)
67-11	543-M-22	Switch, 4-position Selector	67-29	151080-62	Terminal Block Large (5)
67-12	543-M-15	Contact Block , Selector Switch (white) #KA-1 (not shown)	67-30	543-M-17	Connector, Cord, Liq. Tite, 1/2" Blue (2)
67-13	543-M-16	Contact Block , Selector Switch (red) #KA-3 (3) (not shown)	67-31	391N-A-3	Locknut, Steel, Conduit, 1/2" (2)
67-14	KMC-068	Decal, (Remote/Manual - 4-Position)	67-32	12-3-SJ-M	12-3 SJ w/Brown/Blue/Green/Yellow
67-15	543-M-60	Start Legend Plate	67-33	ELU06-9	Plug, European (2)
67-16	543-M-59	Switch, Pushbutton On	67-34	543-M-18	Connector, Conduit, 1/2" Straight (2)
67-17	419-B	Blower Control (230V, 50Hz.) (2)	67-35	543-M-75	Conduit, 1/2" Flexible
67-18	420-1	Cover, Blower Control (2)	67-36	543-M-78	Socket, Schuko, 16A Cover Panel
			67-37	7-21	Hourmeter, 50/60Hz CPS35
			67-38	ELU06-1	Cover, Transformer (not shown)

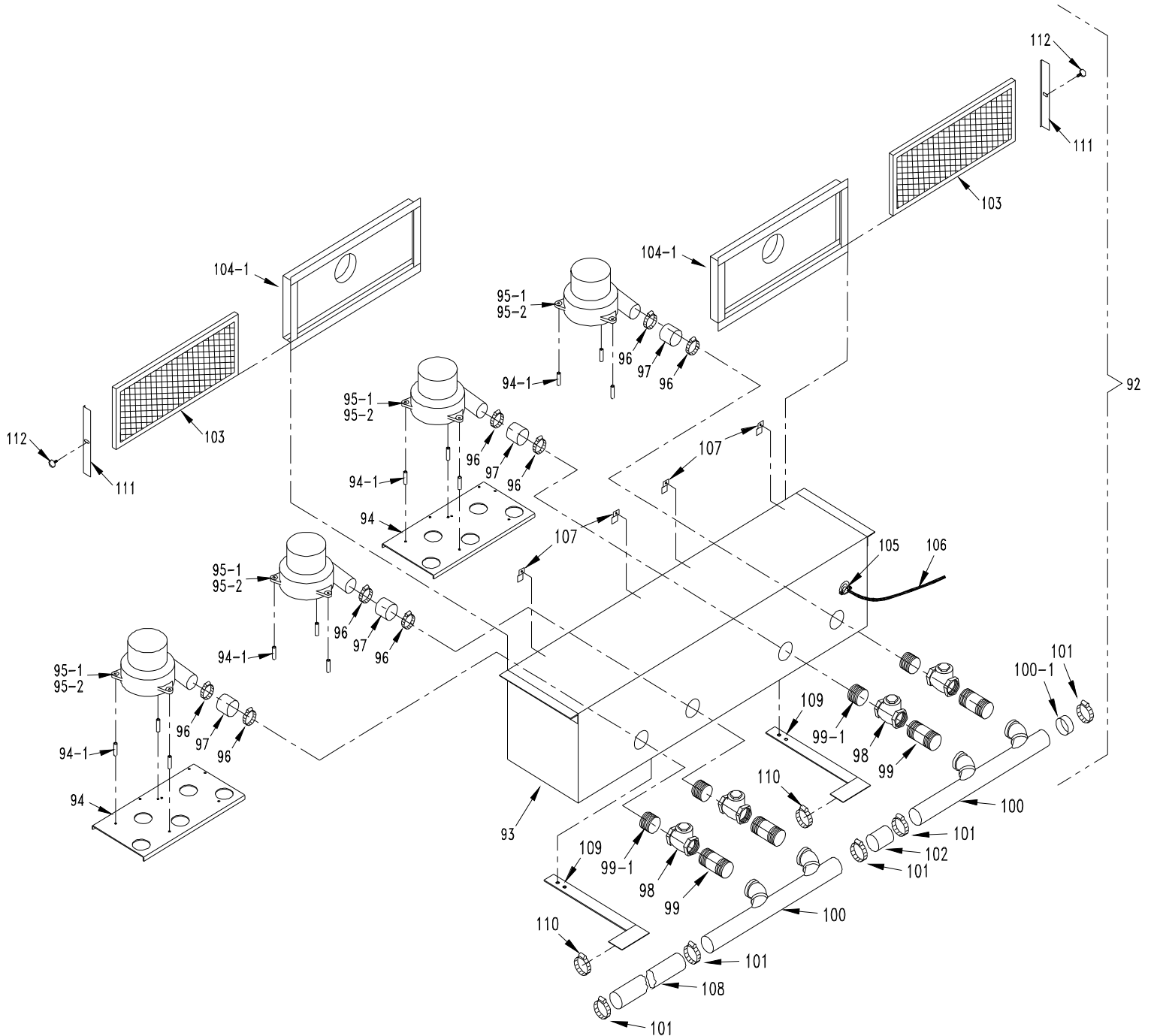
OPTIONAL SHREDDER ASSEMBLY



OPTIONAL SHREDDER ASSEMBLY PARTS LIST

Item #	Part #	Description
79	109019-3-A-Assy	Shredder Box Assembly
79	209019-3-A-Assy	Shredder Box Assembly
79-1	109019-3-A	Shredder Box, 12" (Model #1000)
79-1	209019-3-A	Shredder Box, 16" (Model #2000)
79-2	109019-2-B-R1	Agitator, Shredder Box, (Model #1000 16" — 7 tines)(on right from drive side)
79-3	109019-1-B-R1	Agitator, Shredder Box, (Model #1000 16" — 6 tines)(on left from drive side)
79-4	209019-1-B-R1	Agitator, Shredder Box, (Model #2000 20" — 10 tines)(on right from drive side)
79-5	209019-2-B-R1	Agitator, Shredder Box, (Model #2000 20" — 9 tines)(on left from drive side)
79-6	426-6	Bearing, 3/4" 2-bolt Casted Bearing (4)
79-7	426-7	Seal, Felt, (4)
80	109019-4	Frame, Shredder
81	541	Pin, Hinge (2 included with Shredder Assembly)
81-1	FSB080	Roll Pin, 5/32" x 5/8" (2)
83	150513	#50 Sprocket, 15T x 5/8" (2) (idler)
83-1	FSB120	5/8" Shoulder Bolt x 3/4" (2)
83-2	40052	Nut, Square, 1/2-13 x 1" (2)
84	S-50BS10	#50 Sprocket, 10T x 3/4" (2) (shredder box)
84-1	448	Key, 3/16" x 7/8" (2)
85	109903-A	#50 Double Sprocket, 40T x 17T x 1 1/8" (reducer)
85-1	S-50BS22	#50 Sprocket, 22T x 1 1/8", (speed reducer)
85-2	109080	Key, 1/4" x 1/4" x 2 1/8"
86	S-50BS15-A	#50 Sprocket, 15T x 1" (Hopper)
86	109901-A	#50 Sprocket, 15T x 20T x 1" (Overseas)
86-1	150510	#50 Sprocket, 25T x 1" (Hopper)
86-2	561	Key, 1/4" x 1" (2)
87	109019-10	Guard Extension, Screen
88	109809	Chain, #50 x 55" Nickel Plated (Half link sold separately) (Boston center-down rotation)
88	109813	Chain, #50 x 52 1/2" Nickel Plated (Boston unidirectional rotation)
89	109805	Chain, #50 x 40" (Half link sold separately) (Reducer-Airlock)
89	109811	Chain, #50 x 37 1/2" (Reducer-Airlock) (Overseas)
90	109806	Chain, #50 x 47 1/4" (Half link sold separately) (Airlock-Agitator)
91	109808	Chain, #50 x 53 1/2" Nickel Plated (Reducer-Hopper)
91	8034	Chain, #50 x 52" Nickel Plated (Reducer-Hopper) (Overseas)
92	2530-1	Latch, Bent, 5/16-18 x 2" Hex (2)
93	FW007	Washer, 5/16" Flat (2)
94	FN011	Nut, 5/16" - 18 Hex (2)
95	FN014	Nut, 5/16" - 18 Lock (2)
--	190	Link, Chain 1/2 (Not Shown)
--	150526	Link, Connector / Master (Not Shown)

4 BLOWER BOX ASSEMBLY



4 BLOWER BOX ASSEMBLY PARTS LIST

Item #	Part #	Description
92	109613-M	Box, Blower, 4 Blower Complete w/Conduit, 120V/60Hz.
93	109613	Box, Blower, 4 Blower
94	109079	Bracket, Blower (2)
94-1	409-D	Spacer, Blower (2 1/2") (large blower) (12)
95-1	408-E	Blower Motor, 12.5 A (120V, 50/60 Hz.) 3-stage (4)
95-2	408-F	Blower Motor, 6 A (230V, 50/60 Hz.) 3-stage (4)
96	337	Clamp, Hose, 2" (8)
97	4534	Hose, Hard Rubber 2" x 3" (4)
98	405*	Check Valve (4)
99	109625	Nipple, 1 1/2" x 3 1/2" (4)
99-1	57801	Nipple, Close, 1 1/2" (4)
100	109609	Manifold, Blower Box (2)
100-1	109605	Cap, 2 1/2" Air Manifold
101	339	Clamp, 2 1/2" Hose (5)
102	109604	Hose, Hard Rubber 2 1/2" x 5"
103	109602	Filter, Blower 10" x 24" x 1" (2)
104-1	109601-R1	Blower Door, 4" Input (2)
105	543-M-18	Connector, Conduit, 1/2" Straight
106	543-M-75	Conduit, 1/2" Flexible, 21'
107	536-1	Clip, Short Filter (4)
108	109040-B	Hose, 2 1/2" Flexflyte R, 12'
109	109613-1	Support, Manifold (2)
110	339A	Clamp, 3" Hose (2)
111	109601-1	Cover, End Blower Shroud (2)
112	FSB208	Thumbscrew, 5/16" x 1" (2)

GLOSSARY

BRIDGING	Tendency of fiber to cling in the hopper forming an air pocket above the airlock. This hinders the normal feeding process of the machine.
CFM	(Cubic feet per minute). A measurement of volume or quantity of air flowing at a certain rate, or air moving capability, of a blower. It is the volume of air moved per minute. Higher volume provides increased coverage and velocity of fiber as it leaves the hose.
CHECK VALVE	An apparatus that allows air to flow in one direction only. When mounted on the outlet of the blower, it protects the blower from fiber contamination through the air hose when using one blower. When the blower stops, the valve closes.
COMMERCIAL SPRAY ON	The application of fiber with adhesive to a surface which will remain exposed. The application must therefore be impacted in a smooth, uniform manner.
COVERAGE	Refers to the amount of fiber coverage, usually measured in square feet, according to the R-value desired. This information is given on the fiber package.
NEW CONSTRUCTION WALL CAVITY SPRAY	The spray application of fiber with water or adhesive into an exposed wall cavity to later be covered with drywall sheathing, etc.
PSI	(Pounds of pressure per square inch). The force exerted on a surface by air/liquid. High-pressure blowers push the fiber through the hose. Higher pressure provides less hose plugging and increased compaction in side wall.
PRODUCTION RATE	Pounds of fiber blown per hour.
RPM	(Revolutions per minute). Speed at which the shaft of a rotating device (i.e. blower fan, agitator) is moving.
R-VALUE	Resistance value. A precise measurement of the insulation's resistance to heat transfer. The higher the resistance value, the slower the heat will transfer through the insulating material.
RETRO-SIDEWALL	This refers to the installation of fiber into an unexposed wall cavity. Fiber is usually installed through holes drilled into the exterior siding.
SETTLED DENSITY	The point at which the fiber will not continue to settle further. Any insulation blown will have a certain amount of progressive settling that occurs after a period of time. Following the fiber manufacturers recommendations for bag rate coverage will provide useful information to accommodate for settling.
SETTLING	Compression or compaction of insulation fibers caused by the weight of the material, vibration of structure, temperature, and humidity cycles.

SERVICE RECORD

DATE	MAINTENANCE PERFORMED	COMPONENTS REQUIRED