

2012 CSBG HIGHLIGHTS



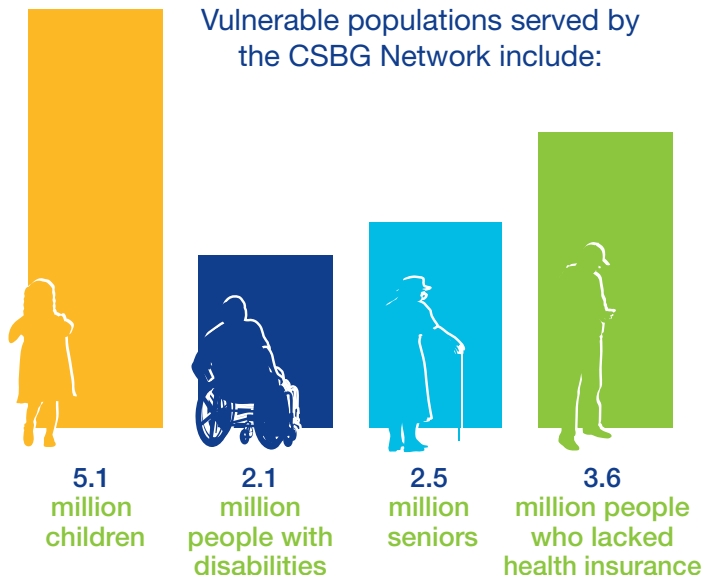
From the FY 2011 Community Services Block Grant Information System (CSBG IS) Survey

CSBG NETWORK PARTICIPANTS

50 States, Puerto Rico, and the District of Columbia administer CSBG to 1,048 agencies in 99% of U.S. counties

CSBG agencies provided services to 18.7 million low-income individuals in 7.6 million families

Vulnerable populations served by the CSBG Network include:



Out of the 47 million Americans in poverty, the CSBG Network served 22%



69% of families served were in poverty

CSBG NETWORK RESOURCES

For every \$1 of CSBG, the Network leveraged \$6.63 from state, local, and private sources, including the value of volunteer hours

The CSBG Network's funding totaled \$15 billion

\$630 million CSBG dollars supported the core activities of the CSBG Network

Including all federal sources, the CSBG Network leveraged \$23.43 per \$1 of CSBG

\$2.37 State
\$1.33 Local
\$2.38 Private
\$0.55 Value of Volunteer Hours
\$6.63

2012 CSBG HIGHLIGHTS



From the FY 2011 Community Services Block Grant Information System (CSBG IS) Survey

CSBG NETWORK NATIONAL PERFORMANCE OUTCOMES

The CSBG Network addressed **36.5 million** conditions of poverty that create barriers to economic security.

Barriers
Addressed

These barriers were measured by:

5.8 million

Employment or Work Supports

Low-income participants in CSBG Network employment initiatives obtained supports which reduced or eliminated barriers to initial or continuous employment, acquired a job, obtained an increase in employment income, or achieved “living wage” employment and benefits.

1.0 million

Economic Asset Enhancement and Utilization

Low-income households achieved an increase in financial assets or financial skills as a result of CSBG Network assistance.

3.9 million

Child and Family Development

Infants, children, youth, parents, and other adults participated in developmental or enrichment programs facilitated by the CSBG Network and achieved program goals.

3.3 million

Independent Living for Low-Income Vulnerable Populations

Low-income vulnerable individuals received services from the CSBG Network and secured or maintained an independent living situation as a result.

3.7 million

Family Stability

Low-income participants obtained supports which reduced or eliminated barriers to family stability through assistance from the CSBG Network.

14.0 million

Emergency Assistance

Low-income individuals and families received emergency assistance from the CSBG Network.

3.8 million

Community Opportunities and Resources

Community opportunities or resources were improved or expanded for low-income people as a result of CSBG Network projects or initiatives, or advocacy with other public and private agencies.

1.0 million

Community Empowerment

Community members and low-income people mobilized to engage in activities that support and promote their own well-being and that of their community as a direct result of CSBG Network initiatives through maximum feasible participation.