

# STATE FACT SHEETS



# 2012

## COMMUNITY SERVICES BLOCK GRANT



NATIONAL ASSOCIATION FOR STATE COMMUNITY SERVICES PROGRAMS

This publication was developed under grant #90ET0422 from the U.S. Department of Health and Human Services, Office of Community Services. However, the contents do not necessarily represent the policy of the Department of Health and Human Services and the endorsement of the federal government should not be assumed unless otherwise granted.

---

# Contents

Alabama	5
Alaska	7
Arizona	9
Arkansas	11
California	13
Colorado	15
Connecticut	17
Delaware	19
District of Columbia	21
Florida	23
Georgia	25
Hawaii	27
Idaho	29
Illinois	31
Indiana	33
Iowa	35
Kansas	37
Kentucky	39
Louisiana	41
Maine	43
Maryland	45
Massachusetts	47
Michigan	49
Minnesota	51
Mississippi	53
Missouri	55

---

# Contents

Montana	57
Nebraska	59
Nevada	61
New Hampshire	63
New Jersey	65
New Mexico	67
New York	69
North Carolina	71
North Dakota	73
Ohio	75
Oklahoma	77
Oregon	79
Pennsylvania	81
Puerto Rico	83
Rhode Island	85
South Carolina	87
South Dakota	89
Tennessee	91
Texas	93
Utah	95
Vermont	97
Virginia	99
Washington	101
West Virginia	103
Wisconsin	105
Wyoming	107



# 2012 CSBG HIGHLIGHTS



From the AL FY 2011 Community Services Block Grant Information System Survey

## Alabama

### CSBG NETWORK PARTICIPANTS

Alabama administers CSBG to  
**21 agencies in**  
**100% of AL counties**

**75%** of AL families served were in  
poverty, and  
**30%** of AL families served were in  
severe poverty

AL CSBG agencies provided services to  
**336,606 low-income individuals in**  
**144,815 families**

Vulnerable populations served by  
AL CSBG agencies included:



Nationally, CSBG agencies provided services to 18.7 million low-income individuals in 7.6 million families.

Out of the 47 million Americans in poverty, the CSBG Network served 22% nationally.

### CSBG NETWORK RESOURCES

For every \$1 of CSBG, the AL Network leveraged **\$1.93** from state, local, and private sources, including the value of volunteer hours



**\$12,406,583** CSBG dollars supported the core activities of the AL CSBG Network

The AL CSBG Network's funding totaled **\$206,508,327**

Including all federal sources, the AL CSBG Network leveraged **\$17.96 per \$1** of CSBG

# 2012 CSBG HIGHLIGHTS



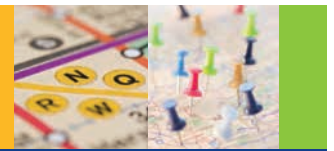
From the AL FY 2011 Community Services Block Grant Information System Survey

## CSBG PERFORMANCE OUTCOMES FOR ALABAMA

The AL CSBG Network addressed 725,820 conditions of poverty that create barriers to economic security.

Barriers Addressed	These barriers were measured by:
<b>94,898</b>	<b>Employment or Work Supports</b>  Low-income participants in CSBG Network employment initiatives obtained supports which reduced or eliminated barriers to initial or continuous employment, acquired a job, obtained an increase in employment income, or achieved “living wage” employment and benefits.
<b>2,771</b>	<b>Economic Asset Enhancement and Utilization</b>  Low-income households achieved an increase in financial assets or financial skills as a result of CSBG Network assistance.
<b>139,742</b>	<b>Child and Family Development</b>  Infants, children, youth, parents, and other adults participated in developmental or enrichment programs facilitated by the CSBG Network and achieved program goals.
<b>134,486</b>	<b>Independent Living for Low-Income Vulnerable Populations</b>  Low-income vulnerable individuals received services from the CSBG Network and secured or maintained an independent living situation as a result.
<b>115,641</b>	<b>Family Stability</b>  Low-income participants obtained supports which reduced or eliminated barriers to family stability through assistance from the CSBG Network.
<b>96,153</b>	<b>Emergency Assistance</b>  Low-income individuals and families received emergency assistance from the CSBG Network.
<b>121,040</b>	<b>Community Opportunities and Resources</b>  Community opportunities or resources were improved or expanded for low-income people as a result of CSBG Network projects or initiatives, or advocacy with other public and private agencies.
<b>21,089</b>	<b>Community Empowerment</b>  Community members and low-income people mobilized to engage in activities that support and promote their own well-being and that of their community as a direct result of CSBG Network initiatives through maximum feasible participation.

# 2012 CSBG HIGHLIGHTS



From the AK FY 2011 Community Services Block Grant Information System Survey

## Alaska

### CSBG NETWORK PARTICIPANTS

Alaska administers CSBG to  
**1 agency in  
100% of AK counties**

**76%** of AK families served were in  
poverty, and  
**33%** of AK families served were in  
severe poverty

The AK CSBG agency provided services to  
**15,818 low-income individuals in  
2,377 families**

Vulnerable populations served by the  
AK CSBG agency included:



Nationally, CSBG agencies provided services to 18.7 million low-income individuals in 7.6 million families.

Out of the 47 million Americans in poverty, the CSBG Network served 22% nationally.

### CSBG NETWORK RESOURCES

For every \$1 of CSBG, the AK Network leveraged  
**\$8.08** from state, local, and private sources,  
including the value of volunteer hours



**\$2,590,681** CSBG dollars  
supported the core activities of  
the AK CSBG Network

The AK CSBG Network's funding  
totaled **\$34,100,947**

Including all federal sources, the  
AK CSBG Network leveraged  
**\$14.05 per \$1** of CSBG

# 2012 CSBG HIGHLIGHTS



From the AK FY 2011 Community Services Block Grant Information System Survey

## CSBG PERFORMANCE OUTCOMES FOR ALASKA

The AK CSBG Network addressed 13,500 conditions of poverty that create barriers to economic security.

### Barriers Addressed

These barriers were measured by:

**1,698**

#### **Employment or Work Supports**

Low-income participants in CSBG Network employment initiatives obtained supports which reduced or eliminated barriers to initial or continuous employment, acquired a job, obtained an increase in employment income, or achieved “living wage” employment and benefits.

**69**

#### **Economic Asset Enhancement and Utilization**

Low-income households achieved an increase in financial assets or financial skills as a result of CSBG Network assistance.

**2,869**

#### **Child and Family Development**

Infants, children, youth, parents, and other adults participated in developmental or enrichment programs facilitated by the CSBG Network and achieved program goals.

**261**

#### **Independent Living for Low-Income Vulnerable Populations**

Low-income vulnerable individuals received services from the CSBG Network and secured or maintained an independent living situation as a result.

**81**

#### **Family Stability**

Low-income participants obtained supports which reduced or eliminated barriers to family stability through assistance from the CSBG Network.

**149**

#### **Emergency Assistance**

Low-income individuals and families received emergency assistance from the CSBG Network.

**535**

#### **Community Opportunities and Resources**

Community opportunities or resources were improved or expanded for low-income people as a result of CSBG Network projects or initiatives, or advocacy with other public and private agencies.

**7,838**

#### **Community Empowerment**

Community members and low-income people mobilized to engage in activities that support and promote their own well-being and that of their community as a direct result of CSBG Network initiatives through maximum feasible participation.

# 2012 CSBG HIGHLIGHTS



From the AZ FY 2011 Community Services Block Grant Information System Survey

## Arizona

### CSBG NETWORK PARTICIPANTS

Arizona administers CSBG to  
**12 agencies in  
100% of AZ counties**

**69%** of AZ families served were in  
poverty, and  
**31%** of AZ families served were in  
severe poverty

AZ CSBG agencies provided services to  
**206,495 low-income individuals in  
67,320 families**

Vulnerable populations served by  
AZ CSBG agencies included:



Nationally, CSBG agencies provided services to 18.7 million low-income individuals in 7.6 million families.

Out of the 47 million Americans in poverty, the CSBG Network served 22% nationally.

### CSBG NETWORK RESOURCES

For every \$1 of CSBG, the AZ Network leveraged  
**\$6.01** from state, local, and private sources,  
including the value of volunteer hours



**\$5,524,074** CSBG dollars  
supported the core activities of  
the AZ CSBG Network

The AZ CSBG Network's funding  
totaled **\$214,696,998**

Including all federal sources, the  
AZ CSBG Network leveraged  
**\$34.64 per \$1** of CSBG



# 2012 CSBG HIGHLIGHTS



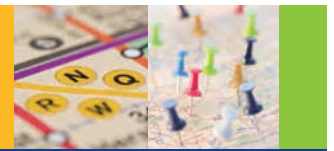
From the AZ FY 2011 Community Services Block Grant Information System Survey

## CSBG PERFORMANCE OUTCOMES FOR ARIZONA

The AZ CSBG Network addressed 549,461 conditions of poverty that create barriers to economic security.

Barriers Addressed	These barriers were measured by:
<b>62,689</b>	<b>Employment or Work Supports</b>  Low-income participants in CSBG Network employment initiatives obtained supports which reduced or eliminated barriers to initial or continuous employment, acquired a job, obtained an increase in employment income, or achieved “living wage” employment and benefits.
<b>21,448</b>	<b>Economic Asset Enhancement and Utilization</b>  Low-income households achieved an increase in financial assets or financial skills as a result of CSBG Network assistance.
<b>19,751</b>	<b>Child and Family Development</b>  Infants, children, youth, parents, and other adults participated in developmental or enrichment programs facilitated by the CSBG Network and achieved program goals.
<b>69,053</b>	<b>Independent Living for Low-Income Vulnerable Populations</b>  Low-income vulnerable individuals received services from the CSBG Network and secured or maintained an independent living situation as a result.
<b>8,429</b>	<b>Family Stability</b>  Low-income participants obtained supports which reduced or eliminated barriers to family stability through assistance from the CSBG Network.
<b>291,150</b>	<b>Emergency Assistance</b>  Low-income individuals and families received emergency assistance from the CSBG Network.
<b>60,740</b>	<b>Community Opportunities and Resources</b>  Community opportunities or resources were improved or expanded for low-income people as a result of CSBG Network projects or initiatives, or advocacy with other public and private agencies.
<b>16,201</b>	<b>Community Empowerment</b>  Community members and low-income people mobilized to engage in activities that support and promote their own well-being and that of their community as a direct result of CSBG Network initiatives through maximum feasible participation.

# 2012 CSBG HIGHLIGHTS



From the AR FY 2011 Community Services Block Grant Information System Survey

## Arkansas

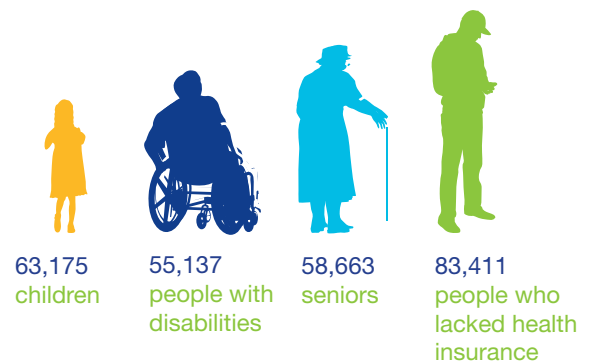
### CSBG NETWORK PARTICIPANTS

Arkansas administers CSBG to  
**16 agencies in  
100% of AR counties**

**73%** of AR families served were in  
poverty, and  
**36%** of AR families served were in  
severe poverty

AR CSBG agencies provided services to  
**223,400 low-income individuals in  
127,027 families**

Vulnerable populations served by  
AR CSBG agencies included:



Nationally, CSBG agencies provided services to 18.7 million low-income individuals in 7.6 million families.

Out of the 47 million Americans in poverty, the CSBG Network served 22% nationally.

### CSBG NETWORK RESOURCES

For every \$1 of CSBG, the AR Network leveraged **\$4.34** from state, local, and private sources, including the value of volunteer hours

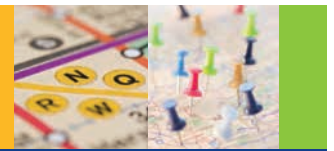


**\$9,199,565** CSBG dollars supported the core activities of the AR CSBG Network

The AR CSBG Network's funding totaled **\$141,119,904**

Including all federal sources, the AR CSBG Network leveraged **\$17.53 per \$1** of CSBG

# 2012 CSBG HIGHLIGHTS



From the AR FY 2011 Community Services Block Grant Information System Survey

## CSBG PERFORMANCE OUTCOMES FOR ARKANSAS

The AR CSBG Network addressed 1,409,649 conditions of poverty that create barriers to economic security.

### Barriers Addressed

These barriers were measured by:

**171,091**

#### **Employment or Work Supports**

Low-income participants in CSBG Network employment initiatives obtained supports which reduced or eliminated barriers to initial or continuous employment, acquired a job, obtained an increase in employment income, or achieved “living wage” employment and benefits.

**7,919**

#### **Economic Asset Enhancement and Utilization**

Low-income households achieved an increase in financial assets or financial skills as a result of CSBG Network assistance.

**60,655**

#### **Child and Family Development**

Infants, children, youth, parents, and other adults participated in developmental or enrichment programs facilitated by the CSBG Network and achieved program goals.

**70,277**

#### **Independent Living for Low-Income Vulnerable Populations**

Low-income vulnerable individuals received services from the CSBG Network and secured or maintained an independent living situation as a result.

**139,062**

#### **Family Stability**

Low-income participants obtained supports which reduced or eliminated barriers to family stability through assistance from the CSBG Network.

**505,222**

#### **Emergency Assistance**

Low-income individuals and families received emergency assistance from the CSBG Network.

**428,385**

#### **Community Opportunities and Resources**

Community opportunities or resources were improved or expanded for low-income people as a result of CSBG Network projects or initiatives, or advocacy with other public and private agencies.

**27,038**

#### **Community Empowerment**

Community members and low-income people mobilized to engage in activities that support and promote their own well-being and that of their community as a direct result of CSBG Network initiatives through maximum feasible participation.



# 2012 CSBG HIGHLIGHTS



From the CA FY 2011 Community Services Block Grant Information System Survey

## California

### CSBG NETWORK PARTICIPANTS

California administers CSBG to  
**59 agencies in**  
**100% of CA counties**

**74%** of CA families served were in  
poverty, and  
**30%** of CA families served were in  
severe poverty

CA CSBG agencies provided services to  
**3,253,535 low-income individuals in**  
**661,432 families**

Vulnerable populations served by  
CA CSBG agencies included:



Nationally, CSBG agencies provided services to 18.7 million low-income individuals in 7.6 million families.

Out of the 47 million Americans in poverty, the CSBG Network served 22% nationally.

### CSBG NETWORK RESOURCES

For every \$1 of CSBG, the CA Network leveraged  
**\$7.45** from state, local, and private sources,  
including the value of volunteer hours

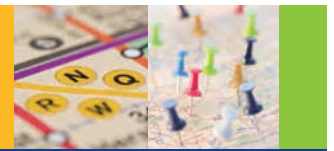


**\$60,322,855** CSBG dollars  
supported the core activities of  
the CA CSBG Network

The CA CSBG Network's funding  
totaled **\$1,615,486,745**

Including all federal sources, the  
CA CSBG Network leveraged  
**\$28.43 per \$1** of CSBG

# 2012 CSBG HIGHLIGHTS



From the CA FY 2011 Community Services Block Grant Information System Survey

## CSBG PERFORMANCE OUTCOMES FOR CALIFORNIA

The CA CSBG Network addressed 4,788,732 conditions of poverty that create barriers to economic security.

### Barriers Addressed

These barriers were measured by:

**293,155**

#### **Employment or Work Supports**

Low-income participants in CSBG Network employment initiatives obtained supports which reduced or eliminated barriers to initial or continuous employment, acquired a job, obtained an increase in employment income, or achieved “living wage” employment and benefits.

**130,527**

#### **Economic Asset Enhancement and Utilization**

Low-income households achieved an increase in financial assets or financial skills as a result of CSBG Network assistance.

**456,114**

#### **Child and Family Development**

Infants, children, youth, parents, and other adults participated in developmental or enrichment programs facilitated by the CSBG Network and achieved program goals.

**360,411**

#### **Independent Living for Low-Income Vulnerable Populations**

Low-income vulnerable individuals received services from the CSBG Network and secured or maintained an independent living situation as a result.

**197,667**

#### **Family Stability**

Low-income participants obtained supports which reduced or eliminated barriers to family stability through assistance from the CSBG Network.

**3,062,913**

#### **Emergency Assistance**

Low-income individuals and families received emergency assistance from the CSBG Network.

**115,159**

#### **Community Opportunities and Resources**

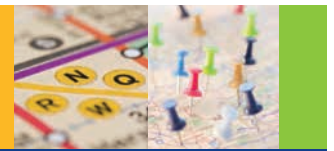
Community opportunities or resources were improved or expanded for low-income people as a result of CSBG Network projects or initiatives, or advocacy with other public and private agencies.

**172,786**

#### **Community Empowerment**

Community members and low-income people mobilized to engage in activities that support and promote their own well-being and that of their community as a direct result of CSBG Network initiatives through maximum feasible participation.

# 2012 CSBG HIGHLIGHTS



From the CO FY 2011 Community Services Block Grant Information System Survey

## Colorado

### CSBG NETWORK PARTICIPANTS

Colorado administers CSBG to  
**38 agencies in  
99% of CO counties**

69% of CO families served were in  
poverty, and  
40% of CO families served were in  
severe poverty

CO CSBG agencies provided services to  
**170,445 low-income individuals in  
67,310 families**

Vulnerable populations served by  
CO CSBG agencies included:



Nationally, CSBG agencies provided services to 18.7 million low-income individuals in 7.6 million families.

Out of the 47 million Americans in poverty, the CSBG Network served 22% nationally.

### CSBG NETWORK RESOURCES

For every \$1 of CSBG, the CO Network leveraged  
**\$9.71** from state, local, and private sources,  
including the value of volunteer hours



**\$5,876,415** CSBG dollars  
supported the core activities of  
the CO CSBG Network

The CO CSBG Network's funding  
totaled **\$236,937,795**

Including all federal sources, the  
CO CSBG Network leveraged  
**\$42.24 per \$1** of CSBG

# 2012 CSBG HIGHLIGHTS



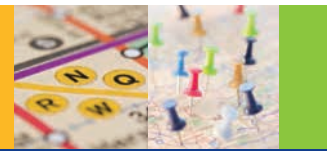
From the CO FY 2011 Community Services Block Grant Information System Survey

## CSBG PERFORMANCE OUTCOMES FOR COLORADO

The CO CSBG Network addressed 263,805 conditions of poverty that create barriers to economic security.

Barriers Addressed	These barriers were measured by:
<b>10,441</b>	<b>Employment or Work Supports</b>  Low-income participants in CSBG Network employment initiatives obtained supports which reduced or eliminated barriers to initial or continuous employment, acquired a job, obtained an increase in employment income, or achieved “living wage” employment and benefits.
<b>440</b>	<b>Economic Asset Enhancement and Utilization</b>  Low-income households achieved an increase in financial assets or financial skills as a result of CSBG Network assistance.
<b>19,690</b>	<b>Child and Family Development</b>  Infants, children, youth, parents, and other adults participated in developmental or enrichment programs facilitated by the CSBG Network and achieved program goals.
<b>13,822</b>	<b>Independent Living for Low-Income Vulnerable Populations</b>  Low-income vulnerable individuals received services from the CSBG Network and secured or maintained an independent living situation as a result.
<b>15,266</b>	<b>Family Stability</b>  Low-income participants obtained supports which reduced or eliminated barriers to family stability through assistance from the CSBG Network.
<b>200,054</b>	<b>Emergency Assistance</b>  Low-income individuals and families received emergency assistance from the CSBG Network.
<b>1,970</b>	<b>Community Opportunities and Resources</b>  Community opportunities or resources were improved or expanded for low-income people as a result of CSBG Network projects or initiatives, or advocacy with other public and private agencies.
<b>2,122</b>	<b>Community Empowerment</b>  Community members and low-income people mobilized to engage in activities that support and promote their own well-being and that of their community as a direct result of CSBG Network initiatives through maximum feasible participation.

# 2012 CSBG HIGHLIGHTS



From the CT FY 2011 Community Services Block Grant Information System Survey

## Connecticut

### CSBG NETWORK PARTICIPANTS

Connecticut administers CSBG to  
**13 agencies in**  
**100% of CT counties**

**43%** of CT families served were in  
poverty, and  
**23%** of CT families served were in  
severe poverty

CT CSBG agencies provided services to  
**423,772 low-income individuals in**  
**172,416 families**

Vulnerable populations served by  
CT CSBG agencies included:



Nationally, CSBG agencies provided services to 18.7 million low-income individuals in 7.6 million families.

Out of the 47 million Americans in poverty, the CSBG Network served 22% nationally.

### CSBG NETWORK RESOURCES

For every \$1 of CSBG, the CT Network leveraged  
**\$12.13** from state, local, and private sources,  
including the value of volunteer hours



**\$8,160,904** CSBG dollars  
supported the core activities of  
the CT CSBG Network

The CT CSBG Network's funding  
totaled **\$296,623,467**

Including all federal sources, the  
CT CSBG Network leveraged  
**\$40.70 per \$1** of CSBG



# 2012 CSBG HIGHLIGHTS



From the CT FY 2011 Community Services Block Grant Information System Survey

## CSBG PERFORMANCE OUTCOMES FOR CONNECTICUT

The CT CSBG Network addressed 467,899 conditions of poverty that create barriers to economic security.

### Barriers Addressed

These barriers were measured by:

**107,801**

#### **Employment or Work Supports**

Low-income participants in CSBG Network employment initiatives obtained supports which reduced or eliminated barriers to initial or continuous employment, acquired a job, obtained an increase in employment income, or achieved “living wage” employment and benefits.

**6,419**

#### **Economic Asset Enhancement and Utilization**

Low-income households achieved an increase in financial assets or financial skills as a result of CSBG Network assistance.

**29,569**

#### **Child and Family Development**

Infants, children, youth, parents, and other adults participated in developmental or enrichment programs facilitated by the CSBG Network and achieved program goals.

**32,485**

#### **Independent Living for Low-Income Vulnerable Populations**

Low-income vulnerable individuals received services from the CSBG Network and secured or maintained an independent living situation as a result.

**63,221**

#### **Family Stability**

Low-income participants obtained supports which reduced or eliminated barriers to family stability through assistance from the CSBG Network.

**178,447**

#### **Emergency Assistance**

Low-income individuals and families received emergency assistance from the CSBG Network.

**15,817**

#### **Community Opportunities and Resources**

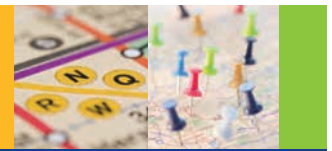
Community opportunities or resources were improved or expanded for low-income people as a result of CSBG Network projects or initiatives, or advocacy with other public and private agencies.

**34,140**

#### **Community Empowerment**

Community members and low-income people mobilized to engage in activities that support and promote their own well-being and that of their community as a direct result of CSBG Network initiatives through maximum feasible participation.

# 2012 CSBG HIGHLIGHTS



From the DE FY 2011 Community Services Block Grant Information System Survey

## Delaware

### CSBG NETWORK PARTICIPANTS

Delaware administers CSBG to  
**1 agency in  
100% of DE counties**

**52%** of DE families served were in  
poverty, and  
**28%** of DE families served were in  
severe poverty

The DE CSBG agency provided services to  
**10,224 low-income individuals in  
6,779 families**

Vulnerable populations served by the  
DE CSBG agency included:



Nationally, CSBG agencies provided services to 18.7 million low-income individuals in 7.6 million families.

Out of the 47 million Americans in poverty, the CSBG Network served 22% nationally.

### CSBG NETWORK RESOURCES

For every \$1 of CSBG, the DE Network leveraged  
**\$0.35** from state, local, and private sources,  
including the value of volunteer hours



**\$3,507,970** CSBG dollars  
supported the core activities of  
the DE CSBG Network

The DE CSBG Network's funding  
totaled **\$3,325,461**

Including all federal sources, the  
DE CSBG Network leveraged  
**\$1.09 per \$1** of CSBG

# 2012 CSBG HIGHLIGHTS



From the DE FY 2011 Community Services Block Grant Information System Survey

## CSBG PERFORMANCE OUTCOMES FOR DELAWARE

The DE CSBG Network addressed 13,012 conditions of poverty that create barriers to economic security.

Barriers Addressed	These barriers were measured by:
<b>3,315</b>	<b>Employment or Work Supports</b>  Low-income participants in CSBG Network employment initiatives obtained supports which reduced or eliminated barriers to initial or continuous employment, acquired a job, obtained an increase in employment income, or achieved “living wage” employment and benefits.
<b>1,889</b>	<b>Economic Asset Enhancement and Utilization</b>  Low-income households achieved an increase in financial assets or financial skills as a result of CSBG Network assistance.
<b>2,110</b>	<b>Child and Family Development</b>  Infants, children, youth, parents, and other adults participated in developmental or enrichment programs facilitated by the CSBG Network and achieved program goals.
<b>2,920</b>	<b>Independent Living for Low-Income Vulnerable Populations</b>  Low-income vulnerable individuals received services from the CSBG Network and secured or maintained an independent living situation as a result.
<b>1,948</b>	<b>Emergency Assistance</b>  Low-income individuals and families received emergency assistance from the CSBG Network.
<b>494</b>	<b>Community Opportunities and Resources</b>  Community opportunities or resources were improved or expanded for low-income people as a result of CSBG Network projects or initiatives, or advocacy with other public and private agencies.
<b>336</b>	<b>Community Empowerment</b>  Community members and low-income people mobilized to engage in activities that support and promote their own well-being and that of their community as a direct result of CSBG Network initiatives through maximum feasible participation.



# 2012 CSBG HIGHLIGHTS



From the DC FY 2011 Community Services Block Grant Information System Survey

## District of Columbia

### CSBG NETWORK PARTICIPANTS

District of Columbia administers  
CSBG to  
1 agency in DC

The DC CSBG agency provided services to  
**95,876 low-income individuals in  
50,743 families**

Vulnerable populations served by the  
DC CSBG agency included:

92% of DC families served were in  
poverty, and  
80% of DC families served were in  
severe poverty



Nationally, CSBG agencies provided services to 18.7 million low-income individuals in 7.6 million families.

Out of the 47 million Americans in poverty, the CSBG Network served 22% nationally.

### CSBG NETWORK RESOURCES

For every \$1 of CSBG, the DC Network leveraged  
**\$1.08** from state, local, and private sources,  
including the value of volunteer hours



**\$11,115,603** CSBG dollars  
supported the core activities of  
the DC CSBG Network

The DC CSBG Network's funding  
totaled **\$31,310,246**

Including all federal sources, the  
DC CSBG Network leveraged  
**\$3.21 per \$1** of CSBG

# 2012 CSBG HIGHLIGHTS



From the DC FY 2011 Community Services Block Grant Information System Survey

## CSBG PERFORMANCE OUTCOMES FOR DISTRICT OF COLUMBIA

The DC CSBG Network addressed 62,594 conditions of poverty that create barriers to economic security.

### Barriers Addressed

These barriers were measured by:

**9,435**

#### **Employment or Work Supports**

Low-income participants in CSBG Network employment initiatives obtained supports which reduced or eliminated barriers to initial or continuous employment, acquired a job, obtained an increase in employment income, or achieved “living wage” employment and benefits.

**2,308**

#### **Economic Asset Enhancement and Utilization**

Low-income households achieved an increase in financial assets or financial skills as a result of CSBG Network assistance.

**16,013**

#### **Child and Family Development**

Infants, children, youth, parents, and other adults participated in developmental or enrichment programs facilitated by the CSBG Network and achieved program goals.

**10,182**

#### **Independent Living for Low-Income Vulnerable Populations**

Low-income vulnerable individuals received services from the CSBG Network and secured or maintained an independent living situation as a result.

**19,902**

#### **Emergency Assistance**

Low-income individuals and families received emergency assistance from the CSBG Network.

**1,283**

#### **Community Opportunities and Resources**

Community opportunities or resources were improved or expanded for low-income people as a result of CSBG Network projects or initiatives, or advocacy with other public and private agencies.

**3,471**

#### **Community Empowerment**

Community members and low-income people mobilized to engage in activities that support and promote their own well-being and that of their community as a direct result of CSBG Network initiatives through maximum feasible participation.

# 2012 CSBG HIGHLIGHTS



From the FL FY 2011 Community Services Block Grant Information System Survey

## Florida

### CSBG NETWORK PARTICIPANTS

Florida administers CSBG to  
**29 agencies in**  
**97% of FL counties**

**77%** of FL families served were in  
poverty, and  
**31%** of FL families served were in  
severe poverty

FL CSBG agencies provided services to  
**694,225 low-income individuals in**  
**268,361 families**

Vulnerable populations served by  
FL CSBG agencies included:



Nationally, CSBG agencies provided services to 18.7 million low-income individuals in 7.6 million families.

Out of the 47 million Americans in poverty, the CSBG Network served 22% nationally.

### CSBG NETWORK RESOURCES

For every \$1 of CSBG, the FL Network leveraged  
**\$4.14** from state, local, and private sources,  
including the value of volunteer hours



**\$19,663,586** CSBG dollars  
supported the core activities of  
the FL CSBG Network

The FL CSBG Network's funding  
totaled **\$355,735,896**

Including all federal sources, the  
FL CSBG Network leveraged  
**\$17.91 per \$1** of CSBG

# 2012 CSBG HIGHLIGHTS



From the FL FY 2011 Community Services Block Grant Information System Survey

## CSBG PERFORMANCE OUTCOMES FOR FLORIDA

The FL CSBG Network addressed 1,326,136 conditions of poverty that create barriers to economic security.

### Barriers Addressed

These barriers were measured by:

**171,371**

#### **Employment or Work Supports**

Low-income participants in CSBG Network employment initiatives obtained supports which reduced or eliminated barriers to initial or continuous employment, acquired a job, obtained an increase in employment income, or achieved “living wage” employment and benefits.

**16,237**

#### **Economic Asset Enhancement and Utilization**

Low-income households achieved an increase in financial assets or financial skills as a result of CSBG Network assistance.

**106,440**

#### **Child and Family Development**

Infants, children, youth, parents, and other adults participated in developmental or enrichment programs facilitated by the CSBG Network and achieved program goals.

**92,189**

#### **Independent Living for Low-Income Vulnerable Populations**

Low-income vulnerable individuals received services from the CSBG Network and secured or maintained an independent living situation as a result.

**152,590**

#### **Family Stability**

Low-income participants obtained supports which reduced or eliminated barriers to family stability through assistance from the CSBG Network.

**548,482**

#### **Emergency Assistance**

Low-income individuals and families received emergency assistance from the CSBG Network.

**196,198**

#### **Community Opportunities and Resources**

Community opportunities or resources were improved or expanded for low-income people as a result of CSBG Network projects or initiatives, or advocacy with other public and private agencies.

**42,629**

#### **Community Empowerment**

Community members and low-income people mobilized to engage in activities that support and promote their own well-being and that of their community as a direct result of CSBG Network initiatives through maximum feasible participation.

# 2012 CSBG HIGHLIGHTS



From the GA FY 2011 Community Services Block Grant Information System Survey

## Georgia

### CSBG NETWORK PARTICIPANTS

Georgia administers CSBG to  
**24 agencies in**  
**100% of GA counties**

**74%** of GA families served were in  
poverty, and  
**29%** of GA families served were in  
severe poverty

GA CSBG agencies provided services to  
**368,220 low-income individuals in**  
**186,968 families**

Vulnerable populations served by  
GA CSBG agencies included:



Nationally, CSBG agencies provided services to 18.7 million low-income individuals in 7.6 million families.

Out of the 47 million Americans in poverty, the CSBG Network served 22% nationally.

### CSBG NETWORK RESOURCES

For every \$1 of CSBG, the GA Network leveraged **\$3.35** from state, local, and private sources, including the value of volunteer hours



**\$18,199,139** CSBG dollars supported the core activities of the GA CSBG Network

The GA CSBG Network's funding totaled **\$355,540,988**

Including all federal sources, the GA CSBG Network leveraged **\$20.10 per \$1** of CSBG



# 2012 CSBG HIGHLIGHTS



From the GA FY 2011 Community Services Block Grant Information System Survey

## CSBG PERFORMANCE OUTCOMES FOR GEORGIA

The GA CSBG Network addressed 749,528 conditions of poverty that create barriers to economic security.

### Barriers Addressed

These barriers were measured by:

**166,076**

#### **Employment or Work Supports**

Low-income participants in CSBG Network employment initiatives obtained supports which reduced or eliminated barriers to initial or continuous employment, acquired a job, obtained an increase in employment income, or achieved "living wage" employment and benefits.

**8,806**

#### **Economic Asset Enhancement and Utilization**

Low-income households achieved an increase in financial assets or financial skills as a result of CSBG Network assistance.

**63,392**

#### **Child and Family Development**

Infants, children, youth, parents, and other adults participated in developmental or enrichment programs facilitated by the CSBG Network and achieved program goals.

**82,768**

#### **Independent Living for Low-Income Vulnerable Populations**

Low-income vulnerable individuals received services from the CSBG Network and secured or maintained an independent living situation as a result.

**125,279**

#### **Family Stability**

Low-income participants obtained supports which reduced or eliminated barriers to family stability through assistance from the CSBG Network.

**246,880**

#### **Emergency Assistance**

Low-income individuals and families received emergency assistance from the CSBG Network.

**10,652**

#### **Community Opportunities and Resources**

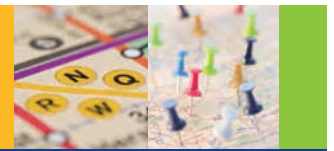
Community opportunities or resources were improved or expanded for low-income people as a result of CSBG Network projects or initiatives, or advocacy with other public and private agencies.

**45,675**

#### **Community Empowerment**

Community members and low-income people mobilized to engage in activities that support and promote their own well-being and that of their community as a direct result of CSBG Network initiatives through maximum feasible participation.

# 2012 CSBG HIGHLIGHTS



From the HI FY 2011 Community Services Block Grant Information System Survey

## Hawaii

### CSBG NETWORK PARTICIPANTS

Hawaii administers CSBG to  
**4 agencies in  
100% of HI counties**

**61%** of HI families served were in  
poverty, and  
**24%** of HI families served were in  
severe poverty

HI CSBG agencies provided services to  
**43,851 low-income individuals in  
19,026 families**

Vulnerable populations served by  
HI CSBG agencies included:



Nationally, CSBG agencies provided services to 18.7 million low-income individuals in 7.6 million families.

Out of the 47 million Americans in poverty, the CSBG Network served 22% nationally.

### CSBG NETWORK RESOURCES

For every \$1 of CSBG, the HI Network leveraged  
**\$4.41** from state, local, and private sources,  
including the value of volunteer hours

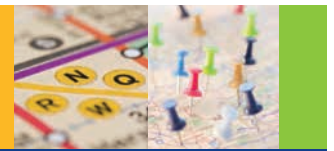


**\$3,507,970** CSBG dollars  
supported the core activities of  
the HI CSBG Network

The HI CSBG Network's funding  
totaled **\$45,305,791**

Including all federal sources, the  
HI CSBG Network leveraged  
**\$10.74 per \$1** of CSBG

# 2012 CSBG HIGHLIGHTS



From the HI FY 2011 Community Services Block Grant Information System Survey

## CSBG PERFORMANCE OUTCOMES FOR HAWAII

The HI CSBG Network addressed 80,547 conditions of poverty that create barriers to economic security.

Barriers Addressed	These barriers were measured by:
<b>19,868</b>	<b>Employment or Work Supports</b>  Low-income participants in CSBG Network employment initiatives obtained supports which reduced or eliminated barriers to initial or continuous employment, acquired a job, obtained an increase in employment income, or achieved “living wage” employment and benefits.
<b>2,117</b>	<b>Economic Asset Enhancement and Utilization</b>  Low-income households achieved an increase in financial assets or financial skills as a result of CSBG Network assistance.
<b>8,482</b>	<b>Child and Family Development</b>  Infants, children, youth, parents, and other adults participated in developmental or enrichment programs facilitated by the CSBG Network and achieved program goals.
<b>2,954</b>	<b>Independent Living for Low-Income Vulnerable Populations</b>  Low-income vulnerable individuals received services from the CSBG Network and secured or maintained an independent living situation as a result.
<b>15,866</b>	<b>Family Stability</b>  Low-income participants obtained supports which reduced or eliminated barriers to family stability through assistance from the CSBG Network.
<b>27,680</b>	<b>Emergency Assistance</b>  Low-income individuals and families received emergency assistance from the CSBG Network.
<b>2,342</b>	<b>Community Opportunities and Resources</b>  Community opportunities or resources were improved or expanded for low-income people as a result of CSBG Network projects or initiatives, or advocacy with other public and private agencies.
<b>1,238</b>	<b>Community Empowerment</b>  Community members and low-income people mobilized to engage in activities that support and promote their own well-being and that of their community as a direct result of CSBG Network initiatives through maximum feasible participation.



# 2012 CSBG HIGHLIGHTS



From the ID FY 2011 Community Services Block Grant Information System Survey

## Idaho

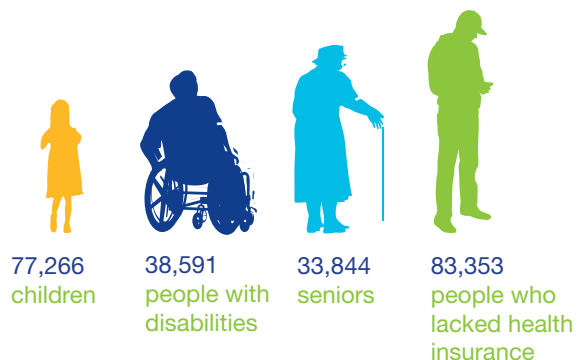
### CSBG NETWORK PARTICIPANTS

Idaho administers CSBG to  
7 agencies in  
100% of ID counties

76% of ID families served were in  
poverty, and  
39% of ID families served were in  
severe poverty

ID CSBG agencies provided services to  
223,900 low-income individuals in  
71,340 families

Vulnerable populations served by  
ID CSBG agencies included:



Nationally, CSBG agencies provided services to 18.7 million low-income individuals in 7.6 million families.

Out of the 47 million Americans in poverty, the CSBG Network served 22% nationally.

### CSBG NETWORK RESOURCES

For every \$1 of CSBG, the ID Network leveraged  
\$3.82 from state, local, and private sources,  
including the value of volunteer hours

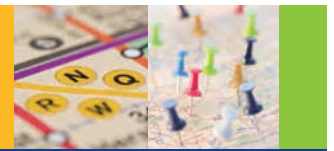


\$3,469,989 CSBG dollars  
supported the core activities of  
the ID CSBG Network

The ID CSBG Network's funding  
totaled \$49,791,182

Including all federal sources, the  
ID CSBG Network leveraged  
\$15.72 per \$1 of CSBG

# 2012 CSBG HIGHLIGHTS



From the ID FY 2011 Community Services Block Grant Information System Survey

## CSBG PERFORMANCE OUTCOMES FOR IDAHO

The ID CSBG Network addressed 506,039 conditions of poverty that create barriers to economic security.

### Barriers Addressed

These barriers were measured by:

**82,111**

#### **Employment or Work Supports**

Low-income participants in CSBG Network employment initiatives obtained supports which reduced or eliminated barriers to initial or continuous employment, acquired a job, obtained an increase in employment income, or achieved “living wage” employment and benefits.

**23,283**

#### **Economic Asset Enhancement and Utilization**

Low-income households achieved an increase in financial assets or financial skills as a result of CSBG Network assistance.

**15,330**

#### **Child and Family Development**

Infants, children, youth, parents, and other adults participated in developmental or enrichment programs facilitated by the CSBG Network and achieved program goals.

**64,372**

#### **Independent Living for Low-Income Vulnerable Populations**

Low-income vulnerable individuals received services from the CSBG Network and secured or maintained an independent living situation as a result.

**61,455**

#### **Family Stability**

Low-income participants obtained supports which reduced or eliminated barriers to family stability through assistance from the CSBG Network.

**244,117**

#### **Emergency Assistance**

Low-income individuals and families received emergency assistance from the CSBG Network.

**10,482**

#### **Community Opportunities and Resources**

Community opportunities or resources were improved or expanded for low-income people as a result of CSBG Network projects or initiatives, or advocacy with other public and private agencies.

**4,889**

#### **Community Empowerment**

Community members and low-income people mobilized to engage in activities that support and promote their own well-being and that of their community as a direct result of CSBG Network initiatives through maximum feasible participation.

# 2012 CSBG HIGHLIGHTS



From the IL FY 2011 Community Services Block Grant Information System Survey

## Illinois

### CSBG NETWORK PARTICIPANTS

Illinois administers CSBG to  
**37 agencies in**  
**100% of IL counties**

**76%** of IL families served were in  
poverty, and  
**38%** of IL families served were in  
severe poverty

IL CSBG agencies provided services to  
**960,502 low-income individuals in**  
**551,003 families**

Vulnerable populations served by  
IL CSBG agencies included:



Nationally, CSBG agencies provided services to 18.7 million low-income individuals in 7.6 million families.

Out of the 47 million Americans in poverty, the CSBG Network served 22% nationally.

### CSBG NETWORK RESOURCES

For every \$1 of CSBG, the IL Network leveraged  
**\$6.02** from state, local, and private sources,  
including the value of volunteer hours



**\$31,959,778** CSBG dollars  
supported the core activities of  
the IL CSBG Network

The IL CSBG Network's funding  
totaled **\$1,048,325,553**

Including all federal sources, the  
IL CSBG Network leveraged  
**\$36.51 per \$1** of CSBG

# 2012 CSBG HIGHLIGHTS



From the IL FY 2011 Community Services Block Grant Information System Survey

## CSBG PERFORMANCE OUTCOMES FOR ILLINOIS

The IL CSBG Network addressed 1,734,429 conditions of poverty that create barriers to economic security.

Barriers  
Addressed

These barriers were measured by:

**404,328**

### **Employment or Work Supports**

Low-income participants in CSBG Network employment initiatives obtained supports which reduced or eliminated barriers to initial or continuous employment, acquired a job, obtained an increase in employment income, or achieved “living wage” employment and benefits.

**21,914**

### **Economic Asset Enhancement and Utilization**

Low-income households achieved an increase in financial assets or financial skills as a result of CSBG Network assistance.

**167,027**

### **Child and Family Development**

Infants, children, youth, parents, and other adults participated in developmental or enrichment programs facilitated by the CSBG Network and achieved program goals.

**336,046**

### **Independent Living for Low-Income Vulnerable Populations**

Low-income vulnerable individuals received services from the CSBG Network and secured or maintained an independent living situation as a result.

**288,171**

### **Family Stability**

Low-income participants obtained supports which reduced or eliminated barriers to family stability through assistance from the CSBG Network.

**351,579**

### **Emergency Assistance**

Low-income individuals and families received emergency assistance from the CSBG Network.

**131,413**

### **Community Opportunities and Resources**

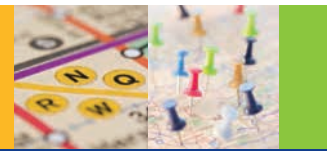
Community opportunities or resources were improved or expanded for low-income people as a result of CSBG Network projects or initiatives, or advocacy with other public and private agencies.

**33,951**

### **Community Empowerment**

Community members and low-income people mobilized to engage in activities that support and promote their own well-being and that of their community as a direct result of CSBG Network initiatives through maximum feasible participation.

# 2012 CSBG HIGHLIGHTS



From the IN FY 2011 Community Services Block Grant Information System Survey

## Indiana

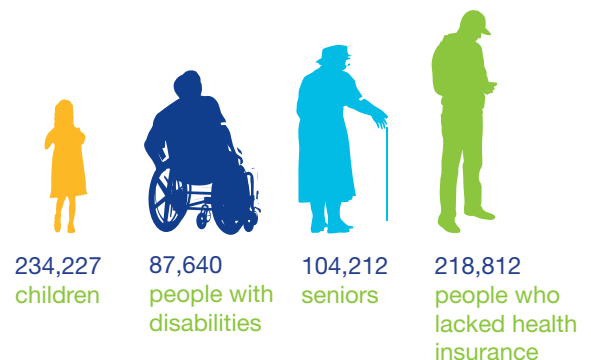
### CSBG NETWORK PARTICIPANTS

Indiana administers CSBG to  
**23 agencies in  
100% of IN counties**

**68%** of IN families served were in  
poverty, and  
**24%** of IN families served were in  
severe poverty

IN CSBG agencies provided services to  
**690,482 low-income individuals in  
288,953 families**

Vulnerable populations served by  
IN CSBG agencies included:



Nationally, CSBG agencies provided services to 18.7 million low-income individuals in 7.6 million families.

Out of the 47 million Americans in poverty, the CSBG Network served 22% nationally.

### CSBG NETWORK RESOURCES

For every \$1 of CSBG, the IN Network leveraged  
**\$4.53** from state, local, and private sources,  
including the value of volunteer hours



**\$9,851,147** CSBG dollars  
supported the core activities of  
the IN CSBG Network

The IN CSBG Network's funding  
totaled **\$278,497,430**

Including all federal sources, the  
IN CSBG Network leveraged  
**\$27.14 per \$1** of CSBG



# 2012 CSBG HIGHLIGHTS



From the IN FY 2011 Community Services Block Grant Information System Survey

## CSBG PERFORMANCE OUTCOMES FOR INDIANA

The IN CSBG Network addressed 1,044,069 conditions of poverty that create barriers to economic security.

### Barriers Addressed

These barriers were measured by:

**291,719**

#### **Employment or Work Supports**

Low-income participants in CSBG Network employment initiatives obtained supports which reduced or eliminated barriers to initial or continuous employment, acquired a job, obtained an increase in employment income, or achieved “living wage” employment and benefits.

**23,735**

#### **Economic Asset Enhancement and Utilization**

Low-income households achieved an increase in financial assets or financial skills as a result of CSBG Network assistance.

**98,623**

#### **Child and Family Development**

Infants, children, youth, parents, and other adults participated in developmental or enrichment programs facilitated by the CSBG Network and achieved program goals.

**140,136**

#### **Independent Living for Low-Income Vulnerable Populations**

Low-income vulnerable individuals received services from the CSBG Network and secured or maintained an independent living situation as a result.

**149,350**

#### **Family Stability**

Low-income participants obtained supports which reduced or eliminated barriers to family stability through assistance from the CSBG Network.

**243,397**

#### **Emergency Assistance**

Low-income individuals and families received emergency assistance from the CSBG Network.

**63,239**

#### **Community Opportunities and Resources**

Community opportunities or resources were improved or expanded for low-income people as a result of CSBG Network projects or initiatives, or advocacy with other public and private agencies.

**33,870**

#### **Community Empowerment**

Community members and low-income people mobilized to engage in activities that support and promote their own well-being and that of their community as a direct result of CSBG Network initiatives through maximum feasible participation.

# 2012 CSBG HIGHLIGHTS



From the IA FY 2011 Community Services Block Grant Information System Survey

## Iowa

### CSBG NETWORK PARTICIPANTS

Iowa administers CSBG to  
**18 agencies in  
100% of IA counties**

**62%** of IA families served were in  
poverty, and  
**29%** of IA families served were in  
severe poverty

IA CSBG agencies provided services to  
**354,581 low-income individuals in  
137,221 families**

Vulnerable populations served by  
IA CSBG agencies included:



Nationally, CSBG agencies provided services to 18.7 million low-income individuals in 7.6 million families.

Out of the 47 million Americans in poverty, the CSBG Network served 22% nationally.

### CSBG NETWORK RESOURCES

For every \$1 of CSBG, the IA Network leveraged  
**\$7.46** from state, local, and private sources,  
including the value of volunteer hours

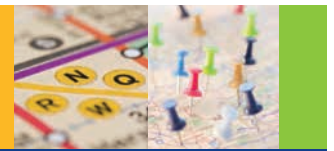


**\$7,322,234** CSBG dollars  
supported the core activities of  
the IA CSBG Network

The IA CSBG Network's funding  
totaled **\$252,429,222**

Including all federal sources, the  
IA CSBG Network leveraged  
**\$36.20 per \$1** of CSBG

# 2012 CSBG HIGHLIGHTS



From the IA FY 2011 Community Services Block Grant Information System Survey

## CSBG PERFORMANCE OUTCOMES FOR IOWA

The IA CSBG Network addressed 367,275 conditions of poverty that create barriers to economic security.

### Barriers Addressed

These barriers were measured by:

**120,472**

#### **Employment or Work Supports**

Low-income participants in CSBG Network employment initiatives obtained supports which reduced or eliminated barriers to initial or continuous employment, acquired a job, obtained an increase in employment income, or achieved “living wage” employment and benefits.

**16,763**

#### **Economic Asset Enhancement and Utilization**

Low-income households achieved an increase in financial assets or financial skills as a result of CSBG Network assistance.

**89,163**

#### **Child and Family Development**

Infants, children, youth, parents, and other adults participated in developmental or enrichment programs facilitated by the CSBG Network and achieved program goals.

**2,082**

#### **Independent Living for Low-Income Vulnerable Populations**

Low-income vulnerable individuals received services from the CSBG Network and secured or maintained an independent living situation as a result.

**119,637**

#### **Emergency Assistance**

Low-income individuals and families received emergency assistance from the CSBG Network.

**1,151**

#### **Community Opportunities and Resources**

Community opportunities or resources were improved or expanded for low-income people as a result of CSBG Network projects or initiatives, or advocacy with other public and private agencies.

**18,007**

#### **Community Empowerment**

Community members and low-income people mobilized to engage in activities that support and promote their own well-being and that of their community as a direct result of CSBG Network initiatives through maximum feasible participation.



# 2012 CSBG HIGHLIGHTS



From the KS FY 2011 Community Services Block Grant Information System Survey

## Kansas

### CSBG NETWORK PARTICIPANTS

Kansas administers CSBG to  
8 agencies in  
100% of KS counties

75% of KS families served were in  
poverty, and  
40% of KS families served were in  
severe poverty

KS CSBG agencies provided services to  
72,715 low-income individuals in  
15,059 families

Vulnerable populations served by  
KS CSBG agencies included:



Nationally, CSBG agencies provided services to 18.7 million low-income individuals in 7.6 million families.

Out of the 47 million Americans in poverty, the CSBG Network served 22% nationally.

### CSBG NETWORK RESOURCES

For every \$1 of CSBG, the KS Network leveraged  
\$4.59 from state, local, and private sources,  
including the value of volunteer hours

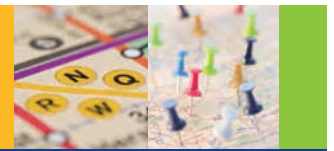


\$5,522,319 CSBG dollars  
supported the core activities of  
the KS CSBG Network

The KS CSBG Network's funding  
totaled \$61,490,382

Including all federal sources, the  
KS CSBG Network leveraged  
\$12.30 per \$1 of CSBG

# 2012 CSBG HIGHLIGHTS



From the KS FY 2011 Community Services Block Grant Information System Survey

## CSBG PERFORMANCE OUTCOMES FOR KANSAS

The KS CSBG Network addressed 58,619 conditions of poverty that create barriers to economic security.

### Barriers Addressed

These barriers were measured by:

#### 4,018 **Employment or Work Supports**

Low-income participants in CSBG Network employment initiatives obtained supports which reduced or eliminated barriers to initial or continuous employment, acquired a job, obtained an increase in employment income, or achieved "living wage" employment and benefits.

#### 1,773 **Economic Asset Enhancement and Utilization**

Low-income households achieved an increase in financial assets or financial skills as a result of CSBG Network assistance.

#### 28,718 **Child and Family Development**

Infants, children, youth, parents, and other adults participated in developmental or enrichment programs facilitated by the CSBG Network and achieved program goals.

#### 2,750 **Independent Living for Low-Income Vulnerable Populations**

Low-income vulnerable individuals received services from the CSBG Network and secured or maintained an independent living situation as a result.

#### 252 **Family Stability**

Low-income participants obtained supports which reduced or eliminated barriers to family stability through assistance from the CSBG Network.

#### 11,022 **Emergency Assistance**

Low-income individuals and families received emergency assistance from the CSBG Network.

#### 2,934 **Community Opportunities and Resources**

Community opportunities or resources were improved or expanded for low-income people as a result of CSBG Network projects or initiatives, or advocacy with other public and private agencies.

#### 7,152 **Community Empowerment**

Community members and low-income people mobilized to engage in activities that support and promote their own well-being and that of their community as a direct result of CSBG Network initiatives through maximum feasible participation.

# 2012 CSBG HIGHLIGHTS



From the KY FY 2011 Community Services Block Grant Information System Survey

## Kentucky

### CSBG NETWORK PARTICIPANTS

Kentucky administers CSBG to  
**23 agencies in**  
**100% of KY counties**

**82%** of KY families served were in  
poverty, and  
**29%** of KY families served were in  
severe poverty

KY CSBG agencies provided services to  
**489,835 low-income individuals in**  
**219,278 families**

Vulnerable populations served by  
KY CSBG agencies included:



Nationally, CSBG agencies provided services to 18.7 million low-income individuals in 7.6 million families.

Out of the 47 million Americans in poverty, the CSBG Network served 22% nationally.

### CSBG NETWORK RESOURCES

For every \$1 of CSBG, the KY Network leveraged  
**\$7.73** from state, local, and private sources,  
including the value of volunteer hours



**\$11,405,912** CSBG dollars  
supported the core activities of  
the KY CSBG Network

The KY CSBG Network's funding  
totaled **\$360,193,886**

Including all federal sources, the  
KY CSBG Network leveraged  
**\$32.82 per \$1** of CSBG

# 2012 CSBG HIGHLIGHTS



From the KY FY 2011 Community Services Block Grant Information System Survey

## CSBG PERFORMANCE OUTCOMES FOR KENTUCKY

The KY CSBG Network addressed 812,721 conditions of poverty that create barriers to economic security.

### Barriers Addressed

These barriers were measured by:

**144,947**

#### **Employment or Work Supports**

Low-income participants in CSBG Network employment initiatives obtained supports which reduced or eliminated barriers to initial or continuous employment, acquired a job, obtained an increase in employment income, or achieved “living wage” employment and benefits.

**12,839**

#### **Economic Asset Enhancement and Utilization**

Low-income households achieved an increase in financial assets or financial skills as a result of CSBG Network assistance.

**72,839**

#### **Child and Family Development**

Infants, children, youth, parents, and other adults participated in developmental or enrichment programs facilitated by the CSBG Network and achieved program goals.

**171,481**

#### **Independent Living for Low-Income Vulnerable Populations**

Low-income vulnerable individuals received services from the CSBG Network and secured or maintained an independent living situation as a result.

**82,008**

#### **Family Stability**

Low-income participants obtained supports which reduced or eliminated barriers to family stability through assistance from the CSBG Network.

**300,858**

#### **Emergency Assistance**

Low-income individuals and families received emergency assistance from the CSBG Network.

**6,897**

#### **Community Opportunities and Resources**

Community opportunities or resources were improved or expanded for low-income people as a result of CSBG Network projects or initiatives, or advocacy with other public and private agencies.

**20,852**

#### **Community Empowerment**

Community members and low-income people mobilized to engage in activities that support and promote their own well-being and that of their community as a direct result of CSBG Network initiatives through maximum feasible participation.

# 2012 CSBG HIGHLIGHTS



From the LA FY 2011 Community Services Block Grant Information System Survey

## Louisiana

### CSBG NETWORK PARTICIPANTS

Louisiana administers CSBG to  
**42 agencies in**  
**100% of LA counties**

**76%** of LA families served were in  
poverty, and  
**33%** of LA families served were in  
severe poverty

LA CSBG agencies provided services to  
**317,400 low-income individuals in**  
**171,080 families**

Vulnerable populations served by  
LA CSBG agencies included:



Nationally, CSBG agencies provided services to 18.7 million low-income individuals in 7.6 million families.

Out of the 47 million Americans in poverty, the CSBG Network served 22% nationally.

### CSBG NETWORK RESOURCES

For every \$1 of CSBG, the LA Network leveraged  
**\$1.82** from state, local, and private sources,  
including the value of volunteer hours



**\$15,883,119** CSBG dollars  
supported the core activities of  
the LA CSBG Network

The LA CSBG Network's funding  
totaled **\$238,563,907**

Including all federal sources, the  
LA CSBG Network leveraged  
**\$16.74 per \$1** of CSBG



# 2012 CSBG HIGHLIGHTS



From the LA FY 2011 Community Services Block Grant Information System Survey

## CSBG PERFORMANCE OUTCOMES FOR LOUISIANA

The LA CSBG Network addressed 410,843 conditions of poverty that create barriers to economic security.

### Barriers Addressed

These barriers were measured by:

**120,071**

#### **Employment or Work Supports**

Low-income participants in CSBG Network employment initiatives obtained supports which reduced or eliminated barriers to initial or continuous employment, acquired a job, obtained an increase in employment income, or achieved “living wage” employment and benefits.

**10,107**

#### **Economic Asset Enhancement and Utilization**

Low-income households achieved an increase in financial assets or financial skills as a result of CSBG Network assistance.

**45,448**

#### **Child and Family Development**

Infants, children, youth, parents, and other adults participated in developmental or enrichment programs facilitated by the CSBG Network and achieved program goals.

**89,256**

#### **Independent Living for Low-Income Vulnerable Populations**

Low-income vulnerable individuals received services from the CSBG Network and secured or maintained an independent living situation as a result.

**69,801**

#### **Family Stability**

Low-income participants obtained supports which reduced or eliminated barriers to family stability through assistance from the CSBG Network.

**58,054**

#### **Emergency Assistance**

Low-income individuals and families received emergency assistance from the CSBG Network.

**4,691**

#### **Community Opportunities and Resources**

Community opportunities or resources were improved or expanded for low-income people as a result of CSBG Network projects or initiatives, or advocacy with other public and private agencies.

**13,415**

#### **Community Empowerment**

Community members and low-income people mobilized to engage in activities that support and promote their own well-being and that of their community as a direct result of CSBG Network initiatives through maximum feasible participation.



# 2012 CSBG HIGHLIGHTS



From the ME FY 2011 Community Services Block Grant Information System Survey

## Maine

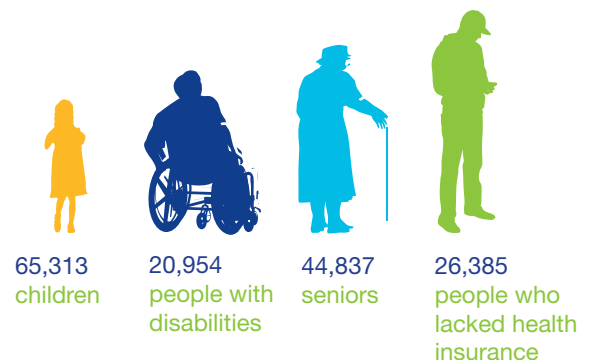
### CSBG NETWORK PARTICIPANTS

Maine administers CSBG to  
**10 agencies in  
100% of ME counties**

**46%** of ME families served were in  
poverty, and  
**15%** of ME families served were in  
severe poverty

ME CSBG agencies provided services to  
**209,589 low-income individuals in  
86,510 families**

Vulnerable populations served by  
ME CSBG agencies included:



Nationally, CSBG agencies provided services to 18.7 million low-income individuals in 7.6 million families.

Out of the 47 million Americans in poverty, the CSBG Network served 22% nationally.

### CSBG NETWORK RESOURCES

For every \$1 of CSBG, the ME Network leveraged  
**\$15.06** from state, local, and private sources,  
including the value of volunteer hours



**\$3,547,675** CSBG dollars  
supported the core activities of  
the ME CSBG Network

The ME CSBG Network's funding  
totaled **\$165,663,390**

Including all federal sources, the  
ME CSBG Network leveraged  
**\$51.51 per \$1** of CSBG

# 2012 CSBG HIGHLIGHTS



From the ME FY 2011 Community Services Block Grant Information System Survey

## CSBG PERFORMANCE OUTCOMES FOR MAINE

The ME CSBG Network addressed 440,880 conditions of poverty that create barriers to economic security.

### Barriers Addressed

These barriers were measured by:

**30,782**

#### **Employment or Work Supports**

Low-income participants in CSBG Network employment initiatives obtained supports which reduced or eliminated barriers to initial or continuous employment, acquired a job, obtained an increase in employment income, or achieved “living wage” employment and benefits.

**32,349**

#### **Economic Asset Enhancement and Utilization**

Low-income households achieved an increase in financial assets or financial skills as a result of CSBG Network assistance.

**72,598**

#### **Child and Family Development**

Infants, children, youth, parents, and other adults participated in developmental or enrichment programs facilitated by the CSBG Network and achieved program goals.

**40,205**

#### **Independent Living for Low-Income Vulnerable Populations**

Low-income vulnerable individuals received services from the CSBG Network and secured or maintained an independent living situation as a result.

**124,102**

#### **Family Stability**

Low-income participants obtained supports which reduced or eliminated barriers to family stability through assistance from the CSBG Network.

**100,562**

#### **Emergency Assistance**

Low-income individuals and families received emergency assistance from the CSBG Network.

**35,868**

#### **Community Opportunities and Resources**

Community opportunities or resources were improved or expanded for low-income people as a result of CSBG Network projects or initiatives, or advocacy with other public and private agencies.

**4,414**

#### **Community Empowerment**

Community members and low-income people mobilized to engage in activities that support and promote their own well-being and that of their community as a direct result of CSBG Network initiatives through maximum feasible participation.

# 2012 CSBG HIGHLIGHTS



From the MD FY 2011 Community Services Block Grant Information System Survey

## Maryland

### CSBG NETWORK PARTICIPANTS

Maryland administers CSBG to  
**18 agencies in**  
**100% of MD counties**

**58%** of MD families served were in  
poverty, and  
**31%** of MD families served were in  
severe poverty

MD CSBG agencies provided services to  
**279,157 low-income individuals in**  
**107,871 families**

Vulnerable populations served by  
MD CSBG agencies included:



Nationally, CSBG agencies provided services to 18.7 million low-income individuals in 7.6 million families.

Out of the 47 million Americans in poverty, the CSBG Network served 22% nationally.

### CSBG NETWORK RESOURCES

For every \$1 of CSBG, the MD Network leveraged  
**\$8.28** from state, local, and private sources,  
including the value of volunteer hours



**\$9,283,432** CSBG dollars  
supported the core activities of  
the MD CSBG Network

The MD CSBG Network's funding  
totaled **\$173,255,729**

Including all federal sources, the  
MD CSBG Network leveraged  
**\$20.67 per \$1** of CSBG

# 2012 CSBG HIGHLIGHTS



From the MD FY 2011 Community Services Block Grant Information System Survey

## CSBG PERFORMANCE OUTCOMES FOR MARYLAND

The MD CSBG Network addressed 825,013 conditions of poverty that create barriers to economic security.

### Barriers Addressed

These barriers were measured by:

**195,458**

#### **Employment or Work Supports**

Low-income participants in CSBG Network employment initiatives obtained supports which reduced or eliminated barriers to initial or continuous employment, acquired a job, obtained an increase in employment income, or achieved “living wage” employment and benefits.

**25,220**

#### **Economic Asset Enhancement and Utilization**

Low-income households achieved an increase in financial assets or financial skills as a result of CSBG Network assistance.

**22,929**

#### **Child and Family Development**

Infants, children, youth, parents, and other adults participated in developmental or enrichment programs facilitated by the CSBG Network and achieved program goals.

**22,453**

#### **Independent Living for Low-Income Vulnerable Populations**

Low-income vulnerable individuals received services from the CSBG Network and secured or maintained an independent living situation as a result.

**266,340**

#### **Family Stability**

Low-income participants obtained supports which reduced or eliminated barriers to family stability through assistance from the CSBG Network.

**243,059**

#### **Emergency Assistance**

Low-income individuals and families received emergency assistance from the CSBG Network.

**38,810**

#### **Community Opportunities and Resources**

Community opportunities or resources were improved or expanded for low-income people as a result of CSBG Network projects or initiatives, or advocacy with other public and private agencies.

**10,744**

#### **Community Empowerment**

Community members and low-income people mobilized to engage in activities that support and promote their own well-being and that of their community as a direct result of CSBG Network initiatives through maximum feasible participation.

# 2012 CSBG HIGHLIGHTS



From the MA FY 2011 Community Services Block Grant Information System Survey

## Massachusetts

### CSBG NETWORK PARTICIPANTS

Massachusetts administers CSBG  
to 24 agencies in  
100% of MA counties

48% of MA families served were in  
poverty, and  
21% of MA families served were in  
severe poverty

MA CSBG agencies provided services to  
691,214 low-income individuals in  
352,526 families

Vulnerable populations served by  
MA CSBG agencies included:



Nationally, CSBG agencies provided services to 18.7 million low-income individuals in 7.6 million families.

Out of the 47 million Americans in poverty, the CSBG Network served 22% nationally.

### CSBG NETWORK RESOURCES

For every \$1 of CSBG, the MA Network leveraged  
\$15.25 from state, local, and private sources,  
including the value of volunteer hours



\$16,857,121 CSBG dollars  
supported the core activities of  
the MA CSBG Network

The MA CSBG Network's funding  
totaled \$698,936,951

Including all federal sources, the  
MA CSBG Network leveraged  
\$46.63 per \$1 of CSBG



# 2012 CSBG HIGHLIGHTS



From the MA FY 2011 Community Services Block Grant Information System Survey

## CSBG PERFORMANCE OUTCOMES FOR MASSACHUSETTS

The MA CSBG Network addressed 904,039 conditions of poverty that create barriers to economic security.

### Barriers Addressed

These barriers were measured by:

**240,111**

#### **Employment or Work Supports**

Low-income participants in CSBG Network employment initiatives obtained supports which reduced or eliminated barriers to initial or continuous employment, acquired a job, obtained an increase in employment income, or achieved “living wage” employment and benefits.

**191,249**

#### **Economic Asset Enhancement and Utilization**

Low-income households achieved an increase in financial assets or financial skills as a result of CSBG Network assistance.

**97,914**

#### **Child and Family Development**

Infants, children, youth, parents, and other adults participated in developmental or enrichment programs facilitated by the CSBG Network and achieved program goals.

**45,533**

#### **Independent Living for Low-Income Vulnerable Populations**

Low-income vulnerable individuals received services from the CSBG Network and secured or maintained an independent living situation as a result.

**128,704**

#### **Family Stability**

Low-income participants obtained supports which reduced or eliminated barriers to family stability through assistance from the CSBG Network.

**115,866**

#### **Emergency Assistance**

Low-income individuals and families received emergency assistance from the CSBG Network.

**72,532**

#### **Community Opportunities and Resources**

Community opportunities or resources were improved or expanded for low-income people as a result of CSBG Network projects or initiatives, or advocacy with other public and private agencies.

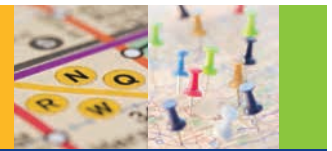
**12,130**

#### **Community Empowerment**

Community members and low-income people mobilized to engage in activities that support and promote their own well-being and that of their community as a direct result of CSBG Network initiatives through maximum feasible participation.



# 2012 CSBG HIGHLIGHTS



From the MI FY 2011 Community Services Block Grant Information System Survey

## Michigan

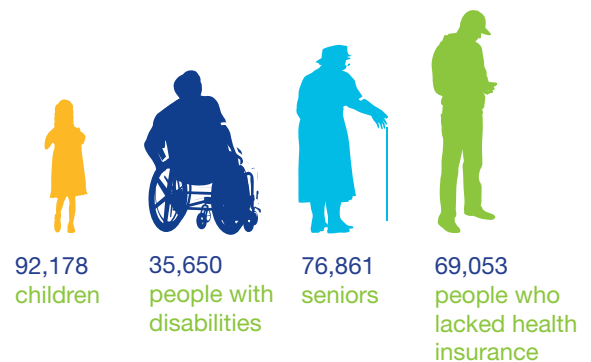
### CSBG NETWORK PARTICIPANTS

Michigan administers CSBG to  
**30 agencies in  
100% of MI counties**

**63%** of MI families served were in  
poverty, and  
**28%** of MI families served were in  
severe poverty

MI CSBG agencies provided services to  
**506,032 low-income individuals in  
235,321 families**

Vulnerable populations served by  
MI CSBG agencies included:



Nationally, CSBG agencies provided services to 18.7 million low-income individuals in 7.6 million families.

Out of the 47 million Americans in poverty, the CSBG Network served 22% nationally.

### CSBG NETWORK RESOURCES

For every \$1 of CSBG, the MI Network leveraged  
**\$5.21** from state, local, and private sources,  
including the value of volunteer hours

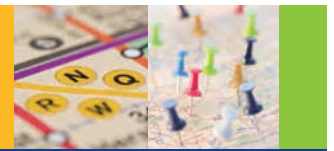


**\$24,927,788** CSBG dollars  
supported the core activities of  
the MI CSBG Network

The MI CSBG Network's funding  
totaled **\$500,105,424**

Including all federal sources, the  
MI CSBG Network leveraged  
**\$20.59 per \$1** of CSBG

# 2012 CSBG HIGHLIGHTS



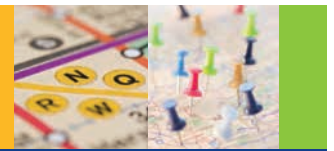
From the MI FY 2011 Community Services Block Grant Information System Survey

## CSBG PERFORMANCE OUTCOMES FOR MICHIGAN

The MI CSBG Network addressed 695,403 conditions of poverty that create barriers to economic security.

Barriers Addressed	These barriers were measured by:
<b>38,022</b>	<b>Employment or Work Supports</b>  Low-income participants in CSBG Network employment initiatives obtained supports which reduced or eliminated barriers to initial or continuous employment, acquired a job, obtained an increase in employment income, or achieved “living wage” employment and benefits.
<b>23,973</b>	<b>Economic Asset Enhancement and Utilization</b>  Low-income households achieved an increase in financial assets or financial skills as a result of CSBG Network assistance.
<b>84,165</b>	<b>Child and Family Development</b>  Infants, children, youth, parents, and other adults participated in developmental or enrichment programs facilitated by the CSBG Network and achieved program goals.
<b>109,132</b>	<b>Independent Living for Low-Income Vulnerable Populations</b>  Low-income vulnerable individuals received services from the CSBG Network and secured or maintained an independent living situation as a result.
<b>58,965</b>	<b>Family Stability</b>  Low-income participants obtained supports which reduced or eliminated barriers to family stability through assistance from the CSBG Network.
<b>343,231</b>	<b>Emergency Assistance</b>  Low-income individuals and families received emergency assistance from the CSBG Network.
<b>19,490</b>	<b>Community Opportunities and Resources</b>  Community opportunities or resources were improved or expanded for low-income people as a result of CSBG Network projects or initiatives, or advocacy with other public and private agencies.
<b>18,425</b>	<b>Community Empowerment</b>  Community members and low-income people mobilized to engage in activities that support and promote their own well-being and that of their community as a direct result of CSBG Network initiatives through maximum feasible participation.

# 2012 CSBG HIGHLIGHTS



From the MN FY 2011 Community Services Block Grant Information System Survey

## Minnesota

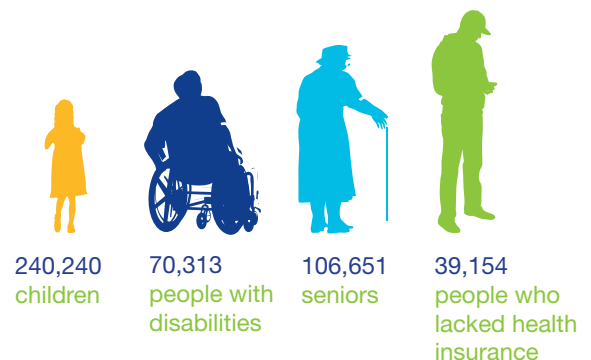
### CSBG NETWORK PARTICIPANTS

Minnesota administers CSBG to  
**39 agencies in  
100% of MN counties**

**60%** of MN families served were in  
poverty, and  
**31%** of MN families served were in  
severe poverty

MN CSBG agencies provided services to  
**696,493 low-income individuals in  
258,479 families**

Vulnerable populations served by  
MN CSBG agencies included:



Nationally, CSBG agencies provided services to 18.7 million low-income individuals in 7.6 million families.

Out of the 47 million Americans in poverty, the CSBG Network served 22% nationally.

### CSBG NETWORK RESOURCES

For every \$1 of CSBG, the MN Network leveraged  
**\$23.66** from state, local, and private sources,  
including the value of volunteer hours



**\$8,141,550** CSBG dollars  
supported the core activities of  
the MN CSBG Network

The MN CSBG Network's funding  
totaled **\$563,524,611**

Including all federal sources, the  
MN CSBG Network leveraged  
**\$77.92 per \$1** of CSBG

# 2012 CSBG HIGHLIGHTS



From the MN FY 2011 Community Services Block Grant Information System Survey

## CSBG PERFORMANCE OUTCOMES FOR MINNESOTA

The MN CSBG Network addressed 2,253,269 conditions of poverty that create barriers to economic security.

### Barriers Addressed

These barriers were measured by:

**281,574**

#### **Employment or Work Supports**

Low-income participants in CSBG Network employment initiatives obtained supports which reduced or eliminated barriers to initial or continuous employment, acquired a job, obtained an increase in employment income, or achieved "living wage" employment and benefits.

**30,232**

#### **Economic Asset Enhancement and Utilization**

Low-income households achieved an increase in financial assets or financial skills as a result of CSBG Network assistance.

**69,995**

#### **Child and Family Development**

Infants, children, youth, parents, and other adults participated in developmental or enrichment programs facilitated by the CSBG Network and achieved program goals.

**166,977**

#### **Independent Living for Low-Income Vulnerable Populations**

Low-income vulnerable individuals received services from the CSBG Network and secured or maintained an independent living situation as a result.

**343,683**

#### **Family Stability**

Low-income participants obtained supports which reduced or eliminated barriers to family stability through assistance from the CSBG Network.

**206,474**

#### **Emergency Assistance**

Low-income individuals and families received emergency assistance from the CSBG Network.

**1,120,564**

#### **Community Opportunities and Resources**

Community opportunities or resources were improved or expanded for low-income people as a result of CSBG Network projects or initiatives, or advocacy with other public and private agencies.

**33,770**

#### **Community Empowerment**

Community members and low-income people mobilized to engage in activities that support and promote their own well-being and that of their community as a direct result of CSBG Network initiatives through maximum feasible participation.

# 2012 CSBG HIGHLIGHTS



From the MS FY 2011 Community Services Block Grant Information System Survey

## Mississippi

### CSBG NETWORK PARTICIPANTS

Mississippi administers CSBG to  
**18 agencies in  
100% of MS counties**

**83%** of MS families served were in  
poverty, and  
**31%** of MS families served were in  
severe poverty

MS CSBG agencies provided services to  
**127,721 low-income individuals in  
47,725 families**

Vulnerable populations served by  
MS CSBG agencies included:



Nationally, CSBG agencies provided services to 18.7 million low-income individuals in 7.6 million families.

Out of the 47 million Americans in poverty, the CSBG Network served 22% nationally.

### CSBG NETWORK RESOURCES

For every \$1 of CSBG, the MS Network leveraged  
**\$1.98** from state, local, and private sources,  
including the value of volunteer hours



**\$10,760,781** CSBG dollars  
supported the core activities of  
the MS CSBG Network

The MS CSBG Network's funding  
totaled **\$174,370,243**

Including all federal sources, the  
MS CSBG Network leveraged  
**\$16.71 per \$1** of CSBG



# 2012 CSBG HIGHLIGHTS



From the MS FY 2011 Community Services Block Grant Information System Survey

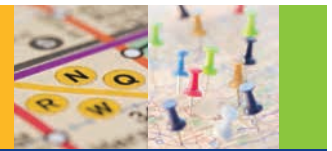
## CSBG PERFORMANCE OUTCOMES FOR MISSISSIPPI

The MS CSBG Network addressed 297,277 conditions of poverty that create barriers to economic security.

Barriers Addressed	These barriers were measured by:
<b>100,406</b>	<b>Employment or Work Supports</b>  Low-income participants in CSBG Network employment initiatives obtained supports which reduced or eliminated barriers to initial or continuous employment, acquired a job, obtained an increase in employment income, or achieved “living wage” employment and benefits.
<b>23,320</b>	<b>Economic Asset Enhancement and Utilization</b>  Low-income households achieved an increase in financial assets or financial skills as a result of CSBG Network assistance.
<b>62,959</b>	<b>Child and Family Development</b>  Infants, children, youth, parents, and other adults participated in developmental or enrichment programs facilitated by the CSBG Network and achieved program goals.
<b>46,610</b>	<b>Independent Living for Low-Income Vulnerable Populations</b>  Low-income vulnerable individuals received services from the CSBG Network and secured or maintained an independent living situation as a result.
<b>35,949</b>	<b>Family Stability</b>  Low-income participants obtained supports which reduced or eliminated barriers to family stability through assistance from the CSBG Network.
<b>18,848</b>	<b>Emergency Assistance</b>  Low-income individuals and families received emergency assistance from the CSBG Network.
<b>5,484</b>	<b>Community Opportunities and Resources</b>  Community opportunities or resources were improved or expanded for low-income people as a result of CSBG Network projects or initiatives, or advocacy with other public and private agencies.
<b>3,701</b>	<b>Community Empowerment</b>  Community members and low-income people mobilized to engage in activities that support and promote their own well-being and that of their community as a direct result of CSBG Network initiatives through maximum feasible participation.



# 2012 CSBG HIGHLIGHTS



From the MO FY 2011 Community Services Block Grant Information System Survey

## Missouri

### CSBG NETWORK PARTICIPANTS

Missouri administers CSBG to  
**19 agencies in  
100% of MO counties**

**83%** of MO families served were in  
poverty, and  
**39%** of MO families served were in  
severe poverty

MO CSBG agencies provided services to  
**158,905 low-income individuals in  
61,890 families**

Vulnerable populations served by  
MO CSBG agencies included:



Nationally, CSBG agencies provided services to 18.7 million low-income individuals in 7.6 million families.

Out of the 47 million Americans in poverty, the CSBG Network served 22% nationally.

### CSBG NETWORK RESOURCES

For every \$1 of CSBG, the MO Network leveraged  
**\$2.07** from state, local, and private sources,  
including the value of volunteer hours



**\$18,721,695** CSBG dollars  
supported the core activities of  
the MO CSBG Network

The MO CSBG Network's funding  
totaled **\$253,046,863**

Including all federal sources, the  
MO CSBG Network leveraged  
**\$14.72 per \$1** of CSBG

# 2012 CSBG HIGHLIGHTS



From the MO FY 2011 Community Services Block Grant Information System Survey

## CSBG PERFORMANCE OUTCOMES FOR MISSOURI

The MO CSBG Network addressed 714,915 conditions of poverty that create barriers to economic security.

### Barriers Addressed

These barriers were measured by:

**169,425**

#### **Employment or Work Supports**

Low-income participants in CSBG Network employment initiatives obtained supports which reduced or eliminated barriers to initial or continuous employment, acquired a job, obtained an increase in employment income, or achieved “living wage” employment and benefits.

**10,595**

#### **Economic Asset Enhancement and Utilization**

Low-income households achieved an increase in financial assets or financial skills as a result of CSBG Network assistance.

**77,517**

#### **Child and Family Development**

Infants, children, youth, parents, and other adults participated in developmental or enrichment programs facilitated by the CSBG Network and achieved program goals.

**112,666**

#### **Independent Living for Low-Income Vulnerable Populations**

Low-income vulnerable individuals received services from the CSBG Network and secured or maintained an independent living situation as a result.

**91,541**

#### **Family Stability**

Low-income participants obtained supports which reduced or eliminated barriers to family stability through assistance from the CSBG Network.

**226,246**

#### **Emergency Assistance**

Low-income individuals and families received emergency assistance from the CSBG Network.

**14,218**

#### **Community Opportunities and Resources**

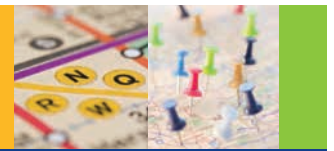
Community opportunities or resources were improved or expanded for low-income people as a result of CSBG Network projects or initiatives, or advocacy with other public and private agencies.

**12,707**

#### **Community Empowerment**

Community members and low-income people mobilized to engage in activities that support and promote their own well-being and that of their community as a direct result of CSBG Network initiatives through maximum feasible participation.

# 2012 CSBG HIGHLIGHTS



From the MT FY 2011 Community Services Block Grant Information System Survey

## Montana

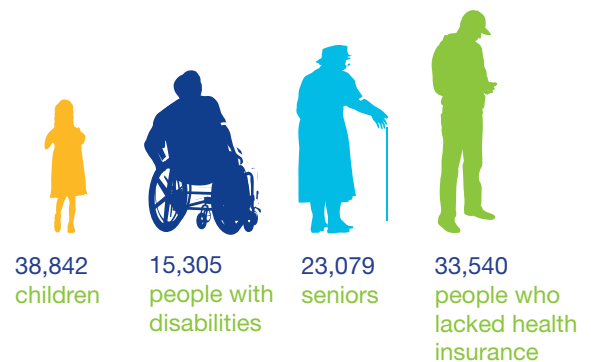
### CSBG NETWORK PARTICIPANTS

Montana administers CSBG to  
**10 agencies in**  
**100% of MT counties**

**56%** of MT families served were in  
poverty, and  
**17%** of MT families served were in  
severe poverty

MT CSBG agencies provided services to  
**110,678 low-income individuals in**  
**51,950 families**

Vulnerable populations served by  
MT CSBG agencies included:



Nationally, CSBG agencies provided services to 18.7 million low-income individuals in 7.6 million families.

Out of the 47 million Americans in poverty, the CSBG Network served 22% nationally.

### CSBG NETWORK RESOURCES

For every \$1 of CSBG, the MT Network leveraged **\$7.63** from state, local, and private sources, including the value of volunteer hours



**\$3,223,736** CSBG dollars supported the core activities of the MT CSBG Network

The MT CSBG Network's funding totaled **\$74,099,043**

Including all federal sources, the MT CSBG Network leveraged **\$26.99 per \$1** of CSBG

# 2012 CSBG HIGHLIGHTS



From the MT FY 2011 Community Services Block Grant Information System Survey

## CSBG PERFORMANCE OUTCOMES FOR MONTANA

The MT CSBG Network addressed 265,873 conditions of poverty that create barriers to economic security.

Barriers Addressed	These barriers were measured by:
<b>58,087</b>	<b>Employment or Work Supports</b>  Low-income participants in CSBG Network employment initiatives obtained supports which reduced or eliminated barriers to initial or continuous employment, acquired a job, obtained an increase in employment income, or achieved “living wage” employment and benefits.
<b>37,335</b>	<b>Economic Asset Enhancement and Utilization</b>  Low-income households achieved an increase in financial assets or financial skills as a result of CSBG Network assistance.
<b>10,571</b>	<b>Child and Family Development</b>  Infants, children, youth, parents, and other adults participated in developmental or enrichment programs facilitated by the CSBG Network and achieved program goals.
<b>38,284</b>	<b>Independent Living for Low-Income Vulnerable Populations</b>  Low-income vulnerable individuals received services from the CSBG Network and secured or maintained an independent living situation as a result.
<b>63,598</b>	<b>Family Stability</b>  Low-income participants obtained supports which reduced or eliminated barriers to family stability through assistance from the CSBG Network.
<b>36,712</b>	<b>Emergency Assistance</b>  Low-income individuals and families received emergency assistance from the CSBG Network.
<b>15,382</b>	<b>Community Opportunities and Resources</b>  Community opportunities or resources were improved or expanded for low-income people as a result of CSBG Network projects or initiatives, or advocacy with other public and private agencies.
<b>5,904</b>	<b>Community Empowerment</b>  Community members and low-income people mobilized to engage in activities that support and promote their own well-being and that of their community as a direct result of CSBG Network initiatives through maximum feasible participation.

# 2012 CSBG HIGHLIGHTS



From the NE FY 2011 Community Services Block Grant Information System Survey

## Nebraska

### CSBG NETWORK PARTICIPANTS

Nebraska administers CSBG to  
**9 agencies in  
100% of NE counties**

**62%** of NE families served were in  
poverty, and  
**24%** of NE families served were in  
severe poverty

NE CSBG agencies provided services to  
**114,505 low-income individuals in  
44,735 families**

Vulnerable populations served by  
NE CSBG agencies included:



Nationally, CSBG agencies provided services to 18.7 million low-income individuals in 7.6 million families.

Out of the 47 million Americans in poverty, the CSBG Network served 22% nationally.

### CSBG NETWORK RESOURCES

For every \$1 of CSBG, the NE Network leveraged  
**\$5.63** from state, local, and private sources,  
including the value of volunteer hours



**\$4,715,906** CSBG dollars  
supported the core activities of  
the NE CSBG Network

The NE CSBG Network's funding  
totaled **\$84,019,951**

Including all federal sources, the  
NE CSBG Network leveraged  
**\$20.10 per \$1** of CSBG



# 2012 CSBG HIGHLIGHTS



From the NE FY 2011 Community Services Block Grant Information System Survey

## CSBG PERFORMANCE OUTCOMES FOR NEBRASKA

The NE CSBG Network addressed 224,328 conditions of poverty that create barriers to economic security.

### Barriers Addressed

These barriers were measured by:

**20,216**

#### **Employment or Work Supports**

Low-income participants in CSBG Network employment initiatives obtained supports which reduced or eliminated barriers to initial or continuous employment, acquired a job, obtained an increase in employment income, or achieved “living wage” employment and benefits.

**8,234**

#### **Economic Asset Enhancement and Utilization**

Low-income households achieved an increase in financial assets or financial skills as a result of CSBG Network assistance.

**54,539**

#### **Child and Family Development**

Infants, children, youth, parents, and other adults participated in developmental or enrichment programs facilitated by the CSBG Network and achieved program goals.

**20,417**

#### **Independent Living for Low-Income Vulnerable Populations**

Low-income vulnerable individuals received services from the CSBG Network and secured or maintained an independent living situation as a result.

**17,254**

#### **Family Stability**

Low-income participants obtained supports which reduced or eliminated barriers to family stability through assistance from the CSBG Network.

**47,059**

#### **Emergency Assistance**

Low-income individuals and families received emergency assistance from the CSBG Network.

**40,251**

#### **Community Opportunities and Resources**

Community opportunities or resources were improved or expanded for low-income people as a result of CSBG Network projects or initiatives, or advocacy with other public and private agencies.

**16,358**

#### **Community Empowerment**

Community members and low-income people mobilized to engage in activities that support and promote their own well-being and that of their community as a direct result of CSBG Network initiatives through maximum feasible participation.



# 2012 CSBG HIGHLIGHTS



From the NV FY 2011 Community Services Block Grant Information System Survey

## Nevada

### CSBG NETWORK PARTICIPANTS

Nevada administers CSBG to  
**12 agencies in**  
**100% of NV counties**

**78%** of NV families served were in  
poverty, and  
**55%** of NV families served were in  
severe poverty

NV CSBG agencies provided services to  
**25,106 low-income individuals in**  
**12,408 families**

Vulnerable populations served by  
NV CSBG agencies included:



Nationally, CSBG agencies provided services to 18.7 million low-income individuals in 7.6 million families.

Out of the 47 million Americans in poverty, the CSBG Network served 22% nationally.

### CSBG NETWORK RESOURCES

For every \$1 of CSBG, the NV Network leveraged **\$1.73** from state, local, and private sources, including the value of volunteer hours



**\$3,507,970** CSBG dollars supported the core activities of the NV CSBG Network

The NV CSBG Network's funding totaled **\$30,739,809**

Including all federal sources, the NV CSBG Network leveraged **\$6.88 per \$1** of CSBG

# 2012 CSBG HIGHLIGHTS



From the NV FY 2011 Community Services Block Grant Information System Survey

## CSBG PERFORMANCE OUTCOMES FOR NEVADA

The NV CSBG Network addressed 58,668 conditions of poverty that create barriers to economic security.

### Barriers Addressed

These barriers were measured by:

**9,683**

#### **Employment or Work Supports**

Low-income participants in CSBG Network employment initiatives obtained supports which reduced or eliminated barriers to initial or continuous employment, acquired a job, obtained an increase in employment income, or achieved “living wage” employment and benefits.

**747**

#### **Economic Asset Enhancement and Utilization**

Low-income households achieved an increase in financial assets or financial skills as a result of CSBG Network assistance.

**28,328**

#### **Child and Family Development**

Infants, children, youth, parents, and other adults participated in developmental or enrichment programs facilitated by the CSBG Network and achieved program goals.

**3,020**

#### **Independent Living for Low-Income Vulnerable Populations**

Low-income vulnerable individuals received services from the CSBG Network and secured or maintained an independent living situation as a result.

**190**

#### **Family Stability**

Low-income participants obtained supports which reduced or eliminated barriers to family stability through assistance from the CSBG Network.

**12,118**

#### **Emergency Assistance**

Low-income individuals and families received emergency assistance from the CSBG Network.

**1,728**

#### **Community Opportunities and Resources**

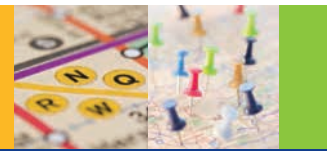
Community opportunities or resources were improved or expanded for low-income people as a result of CSBG Network projects or initiatives, or advocacy with other public and private agencies.

**2,854**

#### **Community Empowerment**

Community members and low-income people mobilized to engage in activities that support and promote their own well-being and that of their community as a direct result of CSBG Network initiatives through maximum feasible participation.

# 2012 CSBG HIGHLIGHTS



From the NH FY 2011 Community Services Block Grant Information System Survey

## New Hampshire

### CSBG NETWORK PARTICIPANTS

New Hampshire administers CSBG  
to 6 agencies in  
100% of NH counties

40% of NH families served were in  
poverty, and  
10% of NH families served were in  
severe poverty

NH CSBG agencies provided services to  
**118,818 low-income individuals in  
50,359 families**

Vulnerable populations served by  
NH CSBG agencies included:



Nationally, CSBG agencies provided services to 18.7 million low-income individuals in 7.6 million families.

Out of the 47 million Americans in poverty, the CSBG Network served 22% nationally.

### CSBG NETWORK RESOURCES

For every \$1 of CSBG, the NH Network leveraged  
**\$11.72** from state, local, and private sources,  
including the value of volunteer hours



**\$3,507,970** CSBG dollars  
supported the core activities of  
the NH CSBG Network

The NH CSBG Network's funding  
totaled **\$155,592,585**

Including all federal sources, the  
NH CSBG Network leveraged  
**\$40.29 per \$1** of CSBG

# 2012 CSBG HIGHLIGHTS



From the NH FY 2011 Community Services Block Grant Information System Survey

## CSBG PERFORMANCE OUTCOMES FOR NEW HAMPSHIRE

The NH CSBG Network addressed 1,078,165 conditions of poverty that create barriers to economic security.

### Barriers Addressed

These barriers were measured by:

**272,436**

#### **Employment or Work Supports**

Low-income participants in CSBG Network employment initiatives obtained supports which reduced or eliminated barriers to initial or continuous employment, acquired a job, obtained an increase in employment income, or achieved “living wage” employment and benefits.

**35,024**

#### **Economic Asset Enhancement and Utilization**

Low-income households achieved an increase in financial assets or financial skills as a result of CSBG Network assistance.

**78,845**

#### **Child and Family Development**

Infants, children, youth, parents, and other adults participated in developmental or enrichment programs facilitated by the CSBG Network and achieved program goals.

**34,592**

#### **Independent Living for Low-Income Vulnerable Populations**

Low-income vulnerable individuals received services from the CSBG Network and secured or maintained an independent living situation as a result.

**29,164**

#### **Family Stability**

Low-income participants obtained supports which reduced or eliminated barriers to family stability through assistance from the CSBG Network.

**486,082**

#### **Emergency Assistance**

Low-income individuals and families received emergency assistance from the CSBG Network.

**138,867**

#### **Community Opportunities and Resources**

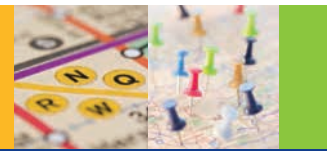
Community opportunities or resources were improved or expanded for low-income people as a result of CSBG Network projects or initiatives, or advocacy with other public and private agencies.

**3,155**

#### **Community Empowerment**

Community members and low-income people mobilized to engage in activities that support and promote their own well-being and that of their community as a direct result of CSBG Network initiatives through maximum feasible participation.

# 2012 CSBG HIGHLIGHTS



From the NJ FY 2011 Community Services Block Grant Information System Survey

## New Jersey

### CSBG NETWORK PARTICIPANTS

New Jersey administers CSBG to  
**26 agencies in  
100% of NJ counties**

**59%** of NJ families served were in  
poverty, and  
**27%** of NJ families served were in  
severe poverty

NJ CSBG agencies provided services to  
**306,889 low-income individuals in  
202,834 families**

Vulnerable populations served by  
NJ CSBG agencies included:



Nationally, CSBG agencies provided services to 18.7 million low-income individuals in 7.6 million families.

Out of the 47 million Americans in poverty, the CSBG Network served 22% nationally.

### CSBG NETWORK RESOURCES

For every \$1 of CSBG, the NJ Network leveraged  
**\$6.11** from state, local, and private sources,  
including the value of volunteer hours



**\$18,511,902** CSBG dollars  
supported the core activities of  
the NJ CSBG Network

The NJ CSBG Network's funding  
totaled **\$298,602,845**

Including all federal sources, the  
NJ CSBG Network leveraged  
**\$18.15 per \$1** of CSBG



# 2012 CSBG HIGHLIGHTS



From the NJ FY 2011 Community Services Block Grant Information System Survey

## CSBG PERFORMANCE OUTCOMES FOR NEW JERSEY

The NJ CSBG Network addressed 575,624 conditions of poverty that create barriers to economic security.

### Barriers Addressed

These barriers were measured by:

**203,525**

#### **Employment or Work Supports**

Low-income participants in CSBG Network employment initiatives obtained supports which reduced or eliminated barriers to initial or continuous employment, acquired a job, obtained an increase in employment income, or achieved “living wage” employment and benefits.

**7,721**

#### **Economic Asset Enhancement and Utilization**

Low-income households achieved an increase in financial assets or financial skills as a result of CSBG Network assistance.

**100,892**

#### **Child and Family Development**

Infants, children, youth, parents, and other adults participated in developmental or enrichment programs facilitated by the CSBG Network and achieved program goals.

**13,370**

#### **Independent Living for Low-Income Vulnerable Populations**

Low-income vulnerable individuals received services from the CSBG Network and secured or maintained an independent living situation as a result.

**60,828**

#### **Family Stability**

Low-income participants obtained supports which reduced or eliminated barriers to family stability through assistance from the CSBG Network.

**178,459**

#### **Emergency Assistance**

Low-income individuals and families received emergency assistance from the CSBG Network.

**5,485**

#### **Community Opportunities and Resources**

Community opportunities or resources were improved or expanded for low-income people as a result of CSBG Network projects or initiatives, or advocacy with other public and private agencies.

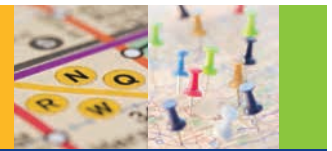
**5,344**

#### **Community Empowerment**

Community members and low-income people mobilized to engage in activities that support and promote their own well-being and that of their community as a direct result of CSBG Network initiatives through maximum feasible participation.



# 2012 CSBG HIGHLIGHTS



From the NM FY 2011 Community Services Block Grant Information System Survey

## New Mexico

### CSBG NETWORK PARTICIPANTS

New Mexico administers CSBG to  
**6 agencies in  
100% of NM counties**

**75%** of NM families served were in  
poverty, and  
**33%** of NM families served were in  
severe poverty

NM CSBG agencies provided services to  
**114,199 low-income individuals in  
50,953 families**

Vulnerable populations served by  
NM CSBG agencies included:



Nationally, CSBG agencies provided services to 18.7 million low-income individuals in 7.6 million families.

Out of the 47 million Americans in poverty, the CSBG Network served 22% nationally.

### CSBG NETWORK RESOURCES

For every \$1 of CSBG, the NM Network leveraged **\$3.13** from state, local, and private sources, including the value of volunteer hours

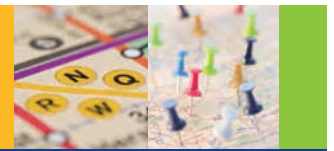


**\$3,853,550** CSBG dollars supported the core activities of the NM CSBG Network

The NM CSBG Network's funding totaled **\$50,956,284**

Including all federal sources, the NM CSBG Network leveraged **\$14.38 per \$1** of CSBG

# 2012 CSBG HIGHLIGHTS



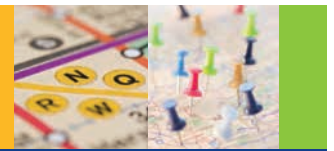
From the NM FY 2011 Community Services Block Grant Information System Survey

## CSBG PERFORMANCE OUTCOMES FOR NEW MEXICO

The NM CSBG Network addressed 164,645 conditions of poverty that create barriers to economic security.

Barriers Addressed	These barriers were measured by:
<b>15,086</b>	<b>Employment or Work Supports</b>  Low-income participants in CSBG Network employment initiatives obtained supports which reduced or eliminated barriers to initial or continuous employment, acquired a job, obtained an increase in employment income, or achieved “living wage” employment and benefits.
<b>13,617</b>	<b>Economic Asset Enhancement and Utilization</b>  Low-income households achieved an increase in financial assets or financial skills as a result of CSBG Network assistance.
<b>30,040</b>	<b>Child and Family Development</b>  Infants, children, youth, parents, and other adults participated in developmental or enrichment programs facilitated by the CSBG Network and achieved program goals.
<b>23,171</b>	<b>Independent Living for Low-Income Vulnerable Populations</b>  Low-income vulnerable individuals received services from the CSBG Network and secured or maintained an independent living situation as a result.
<b>20,147</b>	<b>Family Stability</b>  Low-income participants obtained supports which reduced or eliminated barriers to family stability through assistance from the CSBG Network.
<b>48,562</b>	<b>Emergency Assistance</b>  Low-income individuals and families received emergency assistance from the CSBG Network.
<b>6,192</b>	<b>Community Opportunities and Resources</b>  Community opportunities or resources were improved or expanded for low-income people as a result of CSBG Network projects or initiatives, or advocacy with other public and private agencies.
<b>7,830</b>	<b>Community Empowerment</b>  Community members and low-income people mobilized to engage in activities that support and promote their own well-being and that of their community as a direct result of CSBG Network initiatives through maximum feasible participation.

# 2012 CSBG HIGHLIGHTS



From the NY FY 2011 Community Services Block Grant Information System Survey

## New York

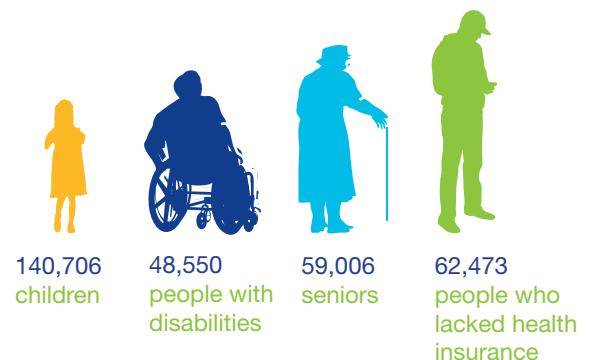
### CSBG NETWORK PARTICIPANTS

New York administers CSBG to  
**52 agencies in**  
**100% of NY counties**

**69%** of NY families served were in  
poverty, and  
**33%** of NY families served were in  
severe poverty

NY CSBG agencies provided services to  
**484,009 low-income individuals in**  
**227,798 families**

Vulnerable populations served by  
NY CSBG agencies included:



Nationally, CSBG agencies provided services to 18.7 million low-income individuals in 7.6 million families.

Out of the 47 million Americans in poverty, the CSBG Network served 22% nationally.

### CSBG NETWORK RESOURCES

For every \$1 of CSBG, the NY Network leveraged  
**\$8.12** from state, local, and private sources,  
including the value of volunteer hours



**\$58,719,802** CSBG dollars  
supported the core activities of  
the NY CSBG Network

The NY CSBG Network's funding  
totaled **\$859,142,853**

Including all federal sources, the  
NY CSBG Network leveraged  
**\$16.15 per \$1** of CSBG

# 2012 CSBG HIGHLIGHTS



From the NY FY 2011 Community Services Block Grant Information System Survey

## CSBG PERFORMANCE OUTCOMES FOR NEW YORK

The NY CSBG Network addressed 804,899 conditions of poverty that create barriers to economic security.

### Barriers Addressed

These barriers were measured by:

**182,786**

#### **Employment or Work Supports**

Low-income participants in CSBG Network employment initiatives obtained supports which reduced or eliminated barriers to initial or continuous employment, acquired a job, obtained an increase in employment income, or achieved “living wage” employment and benefits.

**17,393**

#### **Economic Asset Enhancement and Utilization**

Low-income households achieved an increase in financial assets or financial skills as a result of CSBG Network assistance.

**176,093**

#### **Child and Family Development**

Infants, children, youth, parents, and other adults participated in developmental or enrichment programs facilitated by the CSBG Network and achieved program goals.

**34,655**

#### **Independent Living for Low-Income Vulnerable Populations**

Low-income vulnerable individuals received services from the CSBG Network and secured or maintained an independent living situation as a result.

**51,647**

#### **Family Stability**

Low-income participants obtained supports which reduced or eliminated barriers to family stability through assistance from the CSBG Network.

**191,102**

#### **Emergency Assistance**

Low-income individuals and families received emergency assistance from the CSBG Network.

**40,354**

#### **Community Opportunities and Resources**

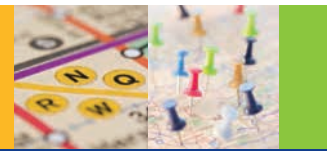
Community opportunities or resources were improved or expanded for low-income people as a result of CSBG Network projects or initiatives, or advocacy with other public and private agencies.

**110,869**

#### **Community Empowerment**

Community members and low-income people mobilized to engage in activities that support and promote their own well-being and that of their community as a direct result of CSBG Network initiatives through maximum feasible participation.

# 2012 CSBG HIGHLIGHTS



From the NC FY 2011 Community Services Block Grant Information System Survey

## North Carolina

### CSBG NETWORK PARTICIPANTS

North Carolina administers CSBG to  
**36 agencies in  
91% of NC counties**

**81%** of NC families served were in  
poverty, and  
**36%** of NC families served were in  
severe poverty

NC CSBG agencies provided services to  
**114,033 low-income individuals in  
53,642 families**

Vulnerable populations served by  
NC CSBG agencies included:



Nationally, CSBG agencies provided services to 18.7 million low-income individuals in 7.6 million families.

Out of the 47 million Americans in poverty, the CSBG Network served 22% nationally.

### CSBG NETWORK RESOURCES

For every \$1 of CSBG, the NC Network leveraged  
**\$4.00** from state, local, and private sources,  
including the value of volunteer hours



**\$17,739,997** CSBG dollars  
supported the core activities of  
the NC CSBG Network

The NC CSBG Network's funding  
totaled **\$264,726,212**

Including all federal sources, the  
NC CSBG Network leveraged  
**\$16.90 per \$1** of CSBG



# 2012 CSBG HIGHLIGHTS



From the NC FY 2011 Community Services Block Grant Information System Survey

## CSBG PERFORMANCE OUTCOMES FOR NORTH CAROLINA

The NC CSBG Network addressed 240,111 conditions of poverty that create barriers to economic security.

### Barriers Addressed

These barriers were measured by:

**45,783**

#### **Employment or Work Supports**

Low-income participants in CSBG Network employment initiatives obtained supports which reduced or eliminated barriers to initial or continuous employment, acquired a job, obtained an increase in employment income, or achieved “living wage” employment and benefits.

**13,179**

#### **Economic Asset Enhancement and Utilization**

Low-income households achieved an increase in financial assets or financial skills as a result of CSBG Network assistance.

**68,216**

#### **Child and Family Development**

Infants, children, youth, parents, and other adults participated in developmental or enrichment programs facilitated by the CSBG Network and achieved program goals.

**17,819**

#### **Independent Living for Low-Income Vulnerable Populations**

Low-income vulnerable individuals received services from the CSBG Network and secured or maintained an independent living situation as a result.

**22,713**

#### **Family Stability**

Low-income participants obtained supports which reduced or eliminated barriers to family stability through assistance from the CSBG Network.

**29,109**

#### **Emergency Assistance**

Low-income individuals and families received emergency assistance from the CSBG Network.

**21,920**

#### **Community Opportunities and Resources**

Community opportunities or resources were improved or expanded for low-income people as a result of CSBG Network projects or initiatives, or advocacy with other public and private agencies.

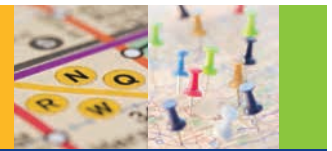
**21,372**

#### **Community Empowerment**

Community members and low-income people mobilized to engage in activities that support and promote their own well-being and that of their community as a direct result of CSBG Network initiatives through maximum feasible participation.



# 2012 CSBG HIGHLIGHTS



From the ND FY 2011 Community Services Block Grant Information System Survey

## North Dakota

### CSBG NETWORK PARTICIPANTS

North Dakota administers CSBG to  
**7 agencies in  
100% of ND counties**

ND CSBG agencies provided services to  
**24,086 low-income individuals in  
12,805 families**

Vulnerable populations served by  
ND CSBG agencies included:

**70%** of ND families served were in  
poverty, and  
**35%** of ND families served were in  
severe poverty



Nationally, CSBG agencies provided services to 18.7 million low-income individuals in 7.6 million families.

Out of the 47 million Americans in poverty, the CSBG Network served 22% nationally.

### CSBG NETWORK RESOURCES

For every \$1 of CSBG, the ND Network leveraged  
**\$0.97** from state, local, and private sources,  
including the value of volunteer hours



**\$3,208,702** CSBG dollars  
supported the core activities of  
the ND CSBG Network

The ND CSBG Network's funding  
totaled **\$15,375,950**

Including all federal sources, the  
ND CSBG Network leveraged  
**\$4.33 per \$1** of CSBG

# 2012 CSBG HIGHLIGHTS



From the ND FY 2011 Community Services Block Grant Information System Survey

## CSBG PERFORMANCE OUTCOMES FOR NORTH DAKOTA

The ND CSBG Network addressed 78,076 conditions of poverty that create barriers to economic security.

### Barriers Addressed

These barriers were measured by:

**6,825**

#### **Employment or Work Supports**

Low-income participants in CSBG Network employment initiatives obtained supports which reduced or eliminated barriers to initial or continuous employment, acquired a job, obtained an increase in employment income, or achieved “living wage” employment and benefits.

**1,716**

#### **Economic Asset Enhancement and Utilization**

Low-income households achieved an increase in financial assets or financial skills as a result of CSBG Network assistance.

**8,287**

#### **Child and Family Development**

Infants, children, youth, parents, and other adults participated in developmental or enrichment programs facilitated by the CSBG Network and achieved program goals.

**7,834**

#### **Independent Living for Low-Income Vulnerable Populations**

Low-income vulnerable individuals received services from the CSBG Network and secured or maintained an independent living situation as a result.

**8,715**

#### **Family Stability**

Low-income participants obtained supports which reduced or eliminated barriers to family stability through assistance from the CSBG Network.

**38,835**

#### **Emergency Assistance**

Low-income individuals and families received emergency assistance from the CSBG Network.

**3,147**

#### **Community Opportunities and Resources**

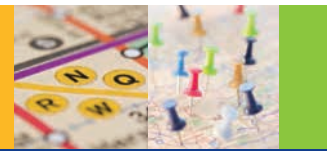
Community opportunities or resources were improved or expanded for low-income people as a result of CSBG Network projects or initiatives, or advocacy with other public and private agencies.

**2,717**

#### **Community Empowerment**

Community members and low-income people mobilized to engage in activities that support and promote their own well-being and that of their community as a direct result of CSBG Network initiatives through maximum feasible participation.

# 2012 CSBG HIGHLIGHTS



From the OH FY 2011 Community Services Block Grant Information System Survey

## Ohio

### CSBG NETWORK PARTICIPANTS

Ohio administers CSBG to  
50 agencies in  
100% of OH counties

76% of OH families served were in  
poverty, and  
42% of OH families served were in  
severe poverty

OH CSBG agencies provided services to  
835,424 low-income individuals in  
323,806 families

Vulnerable populations served by  
OH CSBG agencies included:



Nationally, CSBG agencies provided services to 18.7 million low-income individuals in 7.6 million families.

Out of the 47 million Americans in poverty, the CSBG Network served 22% nationally.

### CSBG NETWORK RESOURCES

For every \$1 of CSBG, the OH Network leveraged  
\$4.67 from state, local, and private sources,  
including the value of volunteer hours



\$26,372,945 CSBG dollars  
supported the core activities of  
the OH CSBG Network

The OH CSBG Network's funding  
totaled \$536,975,320

Including all federal sources, the  
OH CSBG Network leveraged  
\$21.19 per \$1 of CSBG

# 2012 CSBG HIGHLIGHTS



From the OH FY 2011 Community Services Block Grant Information System Survey

## CSBG PERFORMANCE OUTCOMES FOR OHIO

The OH CSBG Network addressed 1,610,209 conditions of poverty that create barriers to economic security.

### Barriers Addressed

These barriers were measured by:

**34,856**

#### **Employment or Work Supports**

Low-income participants in CSBG Network employment initiatives obtained supports which reduced or eliminated barriers to initial or continuous employment, acquired a job, obtained an increase in employment income, or achieved “living wage” employment and benefits.

**13,593**

#### **Economic Asset Enhancement and Utilization**

Low-income households achieved an increase in financial assets or financial skills as a result of CSBG Network assistance.

**552,847**

#### **Child and Family Development**

Infants, children, youth, parents, and other adults participated in developmental or enrichment programs facilitated by the CSBG Network and achieved program goals.

**26,291**

#### **Independent Living for Low-Income Vulnerable Populations**

Low-income vulnerable individuals received services from the CSBG Network and secured or maintained an independent living situation as a result.

**11,269**

#### **Family Stability**

Low-income participants obtained supports which reduced or eliminated barriers to family stability through assistance from the CSBG Network.

**765,157**

#### **Emergency Assistance**

Low-income individuals and families received emergency assistance from the CSBG Network.

**188,231**

#### **Community Opportunities and Resources**

Community opportunities or resources were improved or expanded for low-income people as a result of CSBG Network projects or initiatives, or advocacy with other public and private agencies.

**17,965**

#### **Community Empowerment**

Community members and low-income people mobilized to engage in activities that support and promote their own well-being and that of their community as a direct result of CSBG Network initiatives through maximum feasible participation.

# 2012 CSBG HIGHLIGHTS



From the OK FY 2011 Community Services Block Grant Information System Survey

## Oklahoma

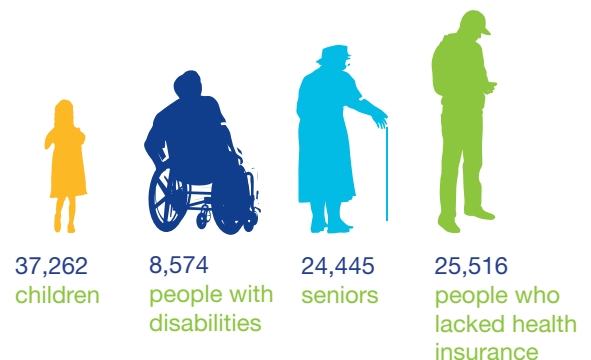
### CSBG NETWORK PARTICIPANTS

Oklahoma administers CSBG to  
**19 agencies in**  
**100% of OK counties**

**60%** of OK families served were in  
poverty, and  
**25%** of OK families served were in  
severe poverty

OK CSBG agencies provided services to  
**131,830 low-income individuals in**  
**76,105 families**

Vulnerable populations served by  
OK CSBG agencies included:



Nationally, CSBG agencies provided services to 18.7 million low-income individuals in 7.6 million families.

Out of the 47 million Americans in poverty, the CSBG Network served 22% nationally.

### CSBG NETWORK RESOURCES

For every \$1 of CSBG, the OK Network leveraged  
**\$12.96** from state, local, and private sources,  
including the value of volunteer hours



**\$8,096,247** CSBG dollars  
supported the core activities of  
the OK CSBG Network

The OK CSBG Network's funding  
totaled **\$253,358,614**

Including all federal sources, the  
OK CSBG Network leveraged  
**\$34.86 per \$1** of CSBG



# 2012 CSBG HIGHLIGHTS



From the OK FY 2011 Community Services Block Grant Information System Survey

## CSBG PERFORMANCE OUTCOMES FOR OKLAHOMA

The OK CSBG Network addressed 631,733 conditions of poverty that create barriers to economic security.

### Barriers Addressed

These barriers were measured by:

**4,672**

#### **Employment or Work Supports**

Low-income participants in CSBG Network employment initiatives obtained supports which reduced or eliminated barriers to initial or continuous employment, acquired a job, obtained an increase in employment income, or achieved “living wage” employment and benefits.

**34,576**

#### **Economic Asset Enhancement and Utilization**

Low-income households achieved an increase in financial assets or financial skills as a result of CSBG Network assistance.

**67,606**

#### **Child and Family Development**

Infants, children, youth, parents, and other adults participated in developmental or enrichment programs facilitated by the CSBG Network and achieved program goals.

**15,698**

#### **Independent Living for Low-Income Vulnerable Populations**

Low-income vulnerable individuals received services from the CSBG Network and secured or maintained an independent living situation as a result.

**2,280**

#### **Family Stability**

Low-income participants obtained supports which reduced or eliminated barriers to family stability through assistance from the CSBG Network.

**38,551**

#### **Emergency Assistance**

Low-income individuals and families received emergency assistance from the CSBG Network.

**455,672**

#### **Community Opportunities and Resources**

Community opportunities or resources were improved or expanded for low-income people as a result of CSBG Network projects or initiatives, or advocacy with other public and private agencies.

**12,678**

#### **Community Empowerment**

Community members and low-income people mobilized to engage in activities that support and promote their own well-being and that of their community as a direct result of CSBG Network initiatives through maximum feasible participation.



# 2012 CSBG HIGHLIGHTS



From the OR FY 2011 Community Services Block Grant Information System Survey

## Oregon

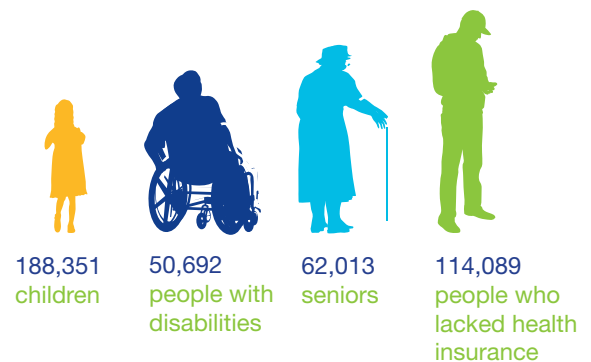
### CSBG NETWORK PARTICIPANTS

Oregon administers CSBG to  
**18 agencies in**  
**100% of OR counties**

OR CSBG agencies provided services to  
**605,896 low-income individuals in**  
**208,274 families**

Vulnerable populations served by  
OR CSBG agencies included:

**63%** of OR families served were in  
poverty, and  
**31%** of OR families served were in  
severe poverty



Nationally, CSBG agencies provided services to 18.7 million low-income individuals in 7.6 million families.

Out of the 47 million Americans in poverty, the CSBG Network served 22% nationally.

### CSBG NETWORK RESOURCES

For every \$1 of CSBG, the OR Network leveraged  
**\$27.78** from state, local, and private sources,  
including the value of volunteer hours

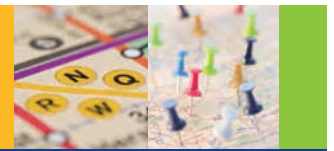


**\$5,394,506** CSBG dollars  
supported the core activities of  
the OR CSBG Network

The OR CSBG Network's funding  
totaled **\$254,669,321**

Including all federal sources, the  
OR CSBG Network leveraged  
**\$52.38 per \$1** of CSBG

# 2012 CSBG HIGHLIGHTS



From the OR FY 2011 Community Services Block Grant Information System Survey

## CSBG PERFORMANCE OUTCOMES FOR OREGON

The OR CSBG Network addressed 1,884,803 conditions of poverty that create barriers to economic security.

### Barriers Addressed

These barriers were measured by:

**295,829**

#### **Employment or Work Supports**

Low-income participants in CSBG Network employment initiatives obtained supports which reduced or eliminated barriers to initial or continuous employment, acquired a job, obtained an increase in employment income, or achieved “living wage” employment and benefits.

**10,031**

#### **Economic Asset Enhancement and Utilization**

Low-income households achieved an increase in financial assets or financial skills as a result of CSBG Network assistance.

**48,182**

#### **Child and Family Development**

Infants, children, youth, parents, and other adults participated in developmental or enrichment programs facilitated by the CSBG Network and achieved program goals.

**128,782**

#### **Independent Living for Low-Income Vulnerable Populations**

Low-income vulnerable individuals received services from the CSBG Network and secured or maintained an independent living situation as a result.

**94,843**

#### **Family Stability**

Low-income participants obtained supports which reduced or eliminated barriers to family stability through assistance from the CSBG Network.

**1,229,932**

#### **Emergency Assistance**

Low-income individuals and families received emergency assistance from the CSBG Network.

**58,244**

#### **Community Opportunities and Resources**

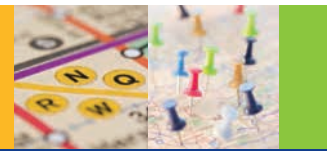
Community opportunities or resources were improved or expanded for low-income people as a result of CSBG Network projects or initiatives, or advocacy with other public and private agencies.

**18,960**

#### **Community Empowerment**

Community members and low-income people mobilized to engage in activities that support and promote their own well-being and that of their community as a direct result of CSBG Network initiatives through maximum feasible participation.

# 2012 CSBG HIGHLIGHTS



From the PA FY 2011 Community Services Block Grant Information System Survey

## Pennsylvania

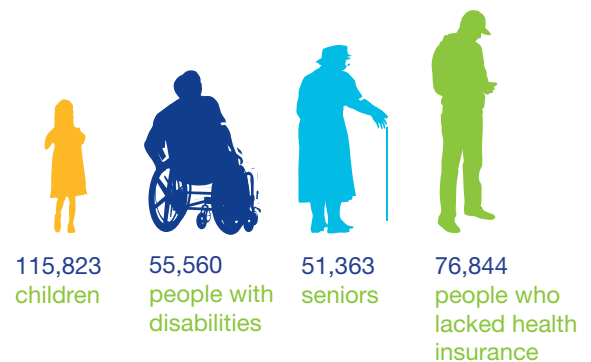
### CSBG NETWORK PARTICIPANTS

Pennsylvania administers CSBG to  
**44 agencies in  
100% of PA counties**

**63%** of PA families served were in  
poverty, and  
**29%** of PA families served were in  
severe poverty

PA CSBG agencies provided services to  
**546,014 low-income individuals in  
255,321 families**

Vulnerable populations served by  
PA CSBG agencies included:



Nationally, CSBG agencies provided services to 18.7 million low-income individuals in 7.6 million families.

Out of the 47 million Americans in poverty, the CSBG Network served 22% nationally.

### CSBG NETWORK RESOURCES

For every \$1 of CSBG, the PA Network leveraged  
**\$7.05** from state, local, and private sources,  
including the value of volunteer hours



**\$28,643,806** CSBG dollars  
supported the core activities of  
the PA CSBG Network

The PA CSBG Network's funding  
totaled **\$482,420,151**

Including all federal sources, the  
PA CSBG Network leveraged  
**\$19.14 per \$1** of CSBG

# 2012 CSBG HIGHLIGHTS



From the PA FY 2011 Community Services Block Grant Information System Survey

## CSBG PERFORMANCE OUTCOMES FOR PENNSYLVANIA

The PA CSBG Network addressed 864,153 conditions of poverty that create barriers to economic security.

### Barriers Addressed

These barriers were measured by:

**118,608**

#### **Employment or Work Supports**

Low-income participants in CSBG Network employment initiatives obtained supports which reduced or eliminated barriers to initial or continuous employment, acquired a job, obtained an increase in employment income, or achieved “living wage” employment and benefits.

**38,680**

#### **Economic Asset Enhancement and Utilization**

Low-income households achieved an increase in financial assets or financial skills as a result of CSBG Network assistance.

**122,460**

#### **Child and Family Development**

Infants, children, youth, parents, and other adults participated in developmental or enrichment programs facilitated by the CSBG Network and achieved program goals.

**64,035**

#### **Independent Living for Low-Income Vulnerable Populations**

Low-income vulnerable individuals received services from the CSBG Network and secured or maintained an independent living situation as a result.

**196,542**

#### **Family Stability**

Low-income participants obtained supports which reduced or eliminated barriers to family stability through assistance from the CSBG Network.

**261,746**

#### **Emergency Assistance**

Low-income individuals and families received emergency assistance from the CSBG Network.

**39,370**

#### **Community Opportunities and Resources**

Community opportunities or resources were improved or expanded for low-income people as a result of CSBG Network projects or initiatives, or advocacy with other public and private agencies.

**22,712**

#### **Community Empowerment**

Community members and low-income people mobilized to engage in activities that support and promote their own well-being and that of their community as a direct result of CSBG Network initiatives through maximum feasible participation.

# 2012 CSBG HIGHLIGHTS



From the PR FY 2011 Community Services Block Grant Information System Survey

## Puerto Rico

### CSBG NETWORK PARTICIPANTS

Puerto Rico administers CSBG to  
**4 agencies in**  
**100% of PR counties**

**92%** of PR families served were in  
poverty, and  
**50%** of PR families served were in  
severe poverty

PR CSBG agencies provided services to  
**34,393 low-income individuals in**  
**19,822 families**

Vulnerable populations served by  
PR CSBG agencies included:



Nationally, CSBG agencies provided services to 18.7 million low-income individuals in 7.6 million families.

Out of the 47 million Americans in poverty, the CSBG Network served 22% nationally.

### CSBG NETWORK RESOURCES

For every \$1 of CSBG, the PR Network leveraged  
**\$4.62** from state, local, and private sources,  
including the value of volunteer hours



**\$28,501,877** CSBG dollars  
supported the core activities of  
the PR CSBG Network

The PR CSBG Network's funding  
totaled **\$173,470,532**

Including all federal sources, the  
PR CSBG Network leveraged  
**\$6.77 per \$1** of CSBG



# 2012 CSBG HIGHLIGHTS



From the PR FY 2011 Community Services Block Grant Information System Survey

## CSBG PERFORMANCE OUTCOMES FOR PUERTO RICO

The PR CSBG Network addressed 98,188 conditions of poverty that create barriers to economic security.

### Barriers Addressed

These barriers were measured by:

#### 3,364 **Employment or Work Supports**

Low-income participants in CSBG Network employment initiatives obtained supports which reduced or eliminated barriers to initial or continuous employment, acquired a job, obtained an increase in employment income, or achieved “living wage” employment and benefits.

#### 116 **Economic Asset Enhancement and Utilization**

Low-income households achieved an increase in financial assets or financial skills as a result of CSBG Network assistance.

#### 1,437 **Child and Family Development**

Infants, children, youth, parents, and other adults participated in developmental or enrichment programs facilitated by the CSBG Network and achieved program goals.

#### 11,767 **Independent Living for Low-Income Vulnerable Populations**

Low-income vulnerable individuals received services from the CSBG Network and secured or maintained an independent living situation as a result.

#### 8,554 **Family Stability**

Low-income participants obtained supports which reduced or eliminated barriers to family stability through assistance from the CSBG Network.

#### 18,078 **Emergency Assistance**

Low-income individuals and families received emergency assistance from the CSBG Network.

#### 41,800 **Community Opportunities and Resources**

Community opportunities or resources were improved or expanded for low-income people as a result of CSBG Network projects or initiatives, or advocacy with other public and private agencies.

#### 13,072 **Community Empowerment**

Community members and low-income people mobilized to engage in activities that support and promote their own well-being and that of their community as a direct result of CSBG Network initiatives through maximum feasible participation.



# 2012 CSBG HIGHLIGHTS



From the RI FY 2011 Community Services Block Grant Information System Survey

## Rhode Island

### CSBG NETWORK PARTICIPANTS

Rhode Island administers CSBG to  
**8 agencies in  
100% of RI counties**

**55%** of RI families served were in  
poverty, and  
**38%** of RI families served were in  
severe poverty

RI CSBG agencies provided services to  
**143,224 low-income individuals in  
76,617 families**

Vulnerable populations served by  
RI CSBG agencies included:



Nationally, CSBG agencies provided services to 18.7 million low-income individuals in 7.6 million families.

Out of the 47 million Americans in poverty, the CSBG Network served 22% nationally.

### CSBG NETWORK RESOURCES

For every \$1 of CSBG, the RI Network leveraged  
**\$9.25** from state, local, and private sources,  
including the value of volunteer hours

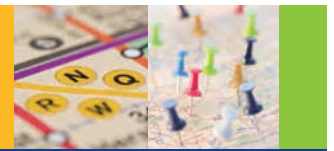


**\$3,740,008** CSBG dollars  
supported the core activities of  
the RI CSBG Network

The RI CSBG Network's funding  
totaled **\$94,920,117**

Including all federal sources, the  
RI CSBG Network leveraged  
**\$28.30 per \$1** of CSBG

# 2012 CSBG HIGHLIGHTS



From the RI FY 2011 Community Services Block Grant Information System Survey

## CSBG PERFORMANCE OUTCOMES FOR RHODE ISLAND

The RI CSBG Network addressed 242,585 conditions of poverty that create barriers to economic security.

### Barriers Addressed

These barriers were measured by:

**54,898**

#### **Employment or Work Supports**

Low-income participants in CSBG Network employment initiatives obtained supports which reduced or eliminated barriers to initial or continuous employment, acquired a job, obtained an increase in employment income, or achieved “living wage” employment and benefits.

**9,435**

#### **Economic Asset Enhancement and Utilization**

Low-income households achieved an increase in financial assets or financial skills as a result of CSBG Network assistance.

**32,350**

#### **Child and Family Development**

Infants, children, youth, parents, and other adults participated in developmental or enrichment programs facilitated by the CSBG Network and achieved program goals.

**26,920**

#### **Independent Living for Low-Income Vulnerable Populations**

Low-income vulnerable individuals received services from the CSBG Network and secured or maintained an independent living situation as a result.

**31,567**

#### **Family Stability**

Low-income participants obtained supports which reduced or eliminated barriers to family stability through assistance from the CSBG Network.

**76,650**

#### **Emergency Assistance**

Low-income individuals and families received emergency assistance from the CSBG Network.

**8,079**

#### **Community Opportunities and Resources**

Community opportunities or resources were improved or expanded for low-income people as a result of CSBG Network projects or initiatives, or advocacy with other public and private agencies.

**2,686**

#### **Community Empowerment**

Community members and low-income people mobilized to engage in activities that support and promote their own well-being and that of their community as a direct result of CSBG Network initiatives through maximum feasible participation.

# 2012 CSBG HIGHLIGHTS



From the SC FY 2011 Community Services Block Grant Information System Survey

## South Carolina

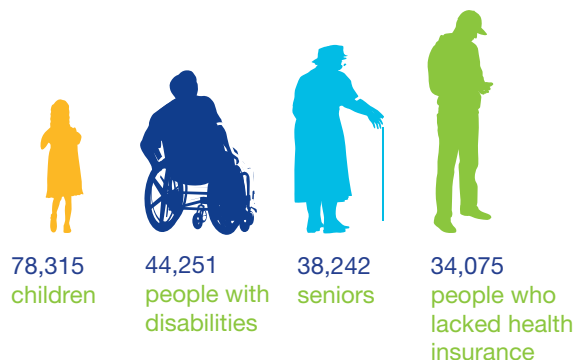
### CSBG NETWORK PARTICIPANTS

South Carolina administers CSBG to  
**14 agencies in**  
**100% of SC counties**

**77%** of SC families served were in  
poverty, and  
**36%** of SC families served were in  
severe poverty

SC CSBG agencies provided services to  
**212,386 low-income individuals in**  
**89,840 families**

Vulnerable populations served by  
SC CSBG agencies included:



Nationally, CSBG agencies provided services to 18.7 million low-income individuals in 7.6 million families.

Out of the 47 million Americans in poverty, the CSBG Network served 22% nationally.

### CSBG NETWORK RESOURCES

For every \$1 of CSBG, the SC Network leveraged  
**\$1.94** from state, local, and private sources,  
including the value of volunteer hours



**\$10,395,553** CSBG dollars  
supported the core activities of  
the SC CSBG Network

The SC CSBG Network's funding  
totaled **\$177,479,248**

Including all federal sources, the  
SC CSBG Network leveraged  
**\$18.65 per \$1** of CSBG

# 2012 CSBG HIGHLIGHTS



From the SC FY 2011 Community Services Block Grant Information System Survey

## CSBG PERFORMANCE OUTCOMES FOR SOUTH CAROLINA

The SC CSBG Network addressed 270,643 conditions of poverty that create barriers to economic security.

Barriers Addressed	These barriers were measured by:
<b>57,093</b>	<b>Employment or Work Supports</b>  Low-income participants in CSBG Network employment initiatives obtained supports which reduced or eliminated barriers to initial or continuous employment, acquired a job, obtained an increase in employment income, or achieved “living wage” employment and benefits.
<b>1,665</b>	<b>Economic Asset Enhancement and Utilization</b>  Low-income households achieved an increase in financial assets or financial skills as a result of CSBG Network assistance.
<b>49,916</b>	<b>Child and Family Development</b>  Infants, children, youth, parents, and other adults participated in developmental or enrichment programs facilitated by the CSBG Network and achieved program goals.
<b>46,152</b>	<b>Independent Living for Low-Income Vulnerable Populations</b>  Low-income vulnerable individuals received services from the CSBG Network and secured or maintained an independent living situation as a result.
<b>40,429</b>	<b>Family Stability</b>  Low-income participants obtained supports which reduced or eliminated barriers to family stability through assistance from the CSBG Network.
<b>62,519</b>	<b>Emergency Assistance</b>  Low-income individuals and families received emergency assistance from the CSBG Network.
<b>9,764</b>	<b>Community Opportunities and Resources</b>  Community opportunities or resources were improved or expanded for low-income people as a result of CSBG Network projects or initiatives, or advocacy with other public and private agencies.
<b>3,105</b>	<b>Community Empowerment</b>  Community members and low-income people mobilized to engage in activities that support and promote their own well-being and that of their community as a direct result of CSBG Network initiatives through maximum feasible participation.

# 2012 CSBG HIGHLIGHTS



From the SD FY 2011 Community Services Block Grant Information System Survey

## South Dakota

### CSBG NETWORK PARTICIPANTS

South Dakota administers CSBG to  
**4 agencies in  
100% of SD counties**

**80%** of SD families served were in  
poverty, and  
**45%** of SD families served were in  
severe poverty

SD CSBG agencies provided services to  
**53,877 low-income individuals in  
23,330 families**

Vulnerable populations served by  
SD CSBG agencies included:



Nationally, CSBG agencies provided services to 18.7 million low-income individuals in 7.6 million families.

Out of the 47 million Americans in poverty, the CSBG Network served 22% nationally.

### CSBG NETWORK RESOURCES

For every \$1 of CSBG, the SD Network leveraged  
**\$29.59** from state, local, and private sources,  
including the value of volunteer hours



**\$2,884,189** CSBG dollars  
supported the core activities of  
the SD CSBG Network

The SD CSBG Network's funding  
totaled **\$117,403,300**

Including all federal sources, the  
SD CSBG Network leveraged  
**\$36.45 per \$1** of CSBG



# 2012 CSBG HIGHLIGHTS



From the SD FY 2011 Community Services Block Grant Information System Survey

## CSBG PERFORMANCE OUTCOMES FOR SOUTH DAKOTA

The SD CSBG Network addressed 113,929 conditions of poverty that create barriers to economic security.

### Barriers Addressed

These barriers were measured by:

**5,513**

#### **Employment or Work Supports**

Low-income participants in CSBG Network employment initiatives obtained supports which reduced or eliminated barriers to initial or continuous employment, acquired a job, obtained an increase in employment income, or achieved “living wage” employment and benefits.

**886**

#### **Economic Asset Enhancement and Utilization**

Low-income households achieved an increase in financial assets or financial skills as a result of CSBG Network assistance.

**17,365**

#### **Child and Family Development**

Infants, children, youth, parents, and other adults participated in developmental or enrichment programs facilitated by the CSBG Network and achieved program goals.

**14,222**

#### **Independent Living for Low-Income Vulnerable Populations**

Low-income vulnerable individuals received services from the CSBG Network and secured or maintained an independent living situation as a result.

**5,075**

#### **Family Stability**

Low-income participants obtained supports which reduced or eliminated barriers to family stability through assistance from the CSBG Network.

**54,125**

#### **Emergency Assistance**

Low-income individuals and families received emergency assistance from the CSBG Network.

**8,316**

#### **Community Opportunities and Resources**

Community opportunities or resources were improved or expanded for low-income people as a result of CSBG Network projects or initiatives, or advocacy with other public and private agencies.

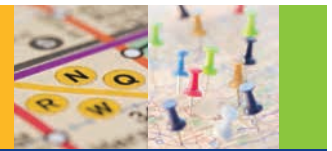
**8,427**

#### **Community Empowerment**

Community members and low-income people mobilized to engage in activities that support and promote their own well-being and that of their community as a direct result of CSBG Network initiatives through maximum feasible participation.



# 2012 CSBG HIGHLIGHTS



From the TN FY 2011 Community Services Block Grant Information System Survey

## Tennessee

### CSBG NETWORK PARTICIPANTS

Tennessee administers CSBG to  
**20 agencies in**  
**100% of TN counties**

**74%** of TN families served were in  
poverty, and  
**29%** of TN families served were in  
severe poverty

TN CSBG agencies provided services to  
**512,882 low-income individuals in**  
**264,512 families**

Vulnerable populations served by  
TN CSBG agencies included:



Nationally, CSBG agencies provided services to 18.7 million low-income individuals in 7.6 million families.

Out of the 47 million Americans in poverty, the CSBG Network served 22% nationally.

### CSBG NETWORK RESOURCES

For every \$1 of CSBG, the TN Network leveraged  
**\$5.54** from state, local, and private sources,  
including the value of volunteer hours



**\$13,328,402** CSBG dollars  
supported the core activities of  
the TN CSBG Network

The TN CSBG Network's funding  
totaled **\$382,967,956**

Including all federal sources, the  
TN CSBG Network leveraged  
**\$28.45 per \$1** of CSBG

# 2012 CSBG HIGHLIGHTS



From the TN FY 2011 Community Services Block Grant Information System Survey

## CSBG PERFORMANCE OUTCOMES FOR TENNESSEE

The TN CSBG Network addressed 956,812 conditions of poverty that create barriers to economic security.

### Barriers Addressed

These barriers were measured by:

**173,010**

#### **Employment or Work Supports**

Low-income participants in CSBG Network employment initiatives obtained supports which reduced or eliminated barriers to initial or continuous employment, acquired a job, obtained an increase in employment income, or achieved “living wage” employment and benefits.

**5,814**

#### **Economic Asset Enhancement and Utilization**

Low-income households achieved an increase in financial assets or financial skills as a result of CSBG Network assistance.

**89,493**

#### **Child and Family Development**

Infants, children, youth, parents, and other adults participated in developmental or enrichment programs facilitated by the CSBG Network and achieved program goals.

**232,505**

#### **Independent Living for Low-Income Vulnerable Populations**

Low-income vulnerable individuals received services from the CSBG Network and secured or maintained an independent living situation as a result.

**176,232**

#### **Family Stability**

Low-income participants obtained supports which reduced or eliminated barriers to family stability through assistance from the CSBG Network.

**164,615**

#### **Emergency Assistance**

Low-income individuals and families received emergency assistance from the CSBG Network.

**66,472**

#### **Community Opportunities and Resources**

Community opportunities or resources were improved or expanded for low-income people as a result of CSBG Network projects or initiatives, or advocacy with other public and private agencies.

**48,671**

#### **Community Empowerment**

Community members and low-income people mobilized to engage in activities that support and promote their own well-being and that of their community as a direct result of CSBG Network initiatives through maximum feasible participation.

# 2012 CSBG HIGHLIGHTS



From the TX FY 2011 Community Services Block Grant Information System Survey

## Texas

### CSBG NETWORK PARTICIPANTS

Texas administers CSBG to  
**44 agencies in  
100% of TX counties**

**83%** of TX families served were in  
poverty, and  
**51%** of TX families served were in  
severe poverty

TX CSBG agencies provided services to  
**733,312 low-income individuals in  
356,498 families**

Vulnerable populations served by  
TX CSBG agencies included:



Nationally, CSBG agencies provided services to 18.7 million low-income individuals in 7.6 million families.

Out of the 47 million Americans in poverty, the CSBG Network served 22% nationally.

### CSBG NETWORK RESOURCES

For every \$1 of CSBG, the TX Network leveraged  
**\$3.39** from state, local, and private sources,  
including the value of volunteer hours



**\$32,579,103** CSBG dollars  
supported the core activities of  
the TX CSBG Network

The TX CSBG Network's funding  
totaled **\$676,258,284**

Including all federal sources, the  
TX CSBG Network leveraged  
**\$23.90 per \$1** of CSBG

# 2012 CSBG HIGHLIGHTS



From the TX FY 2011 Community Services Block Grant Information System Survey

## CSBG PERFORMANCE OUTCOMES FOR TEXAS

The TX CSBG Network addressed 1,000,526 conditions of poverty that create barriers to economic security.

### Barriers Addressed

These barriers were measured by:

**140,108**

#### **Employment or Work Supports**

Low-income participants in CSBG Network employment initiatives obtained supports which reduced or eliminated barriers to initial or continuous employment, acquired a job, obtained an increase in employment income, or achieved “living wage” employment and benefits.

**53,371**

#### **Economic Asset Enhancement and Utilization**

Low-income households achieved an increase in financial assets or financial skills as a result of CSBG Network assistance.

**185,445**

#### **Child and Family Development**

Infants, children, youth, parents, and other adults participated in developmental or enrichment programs facilitated by the CSBG Network and achieved program goals.

**126,417**

#### **Independent Living for Low-Income Vulnerable Populations**

Low-income vulnerable individuals received services from the CSBG Network and secured or maintained an independent living situation as a result.

**104,469**

#### **Family Stability**

Low-income participants obtained supports which reduced or eliminated barriers to family stability through assistance from the CSBG Network.

**351,612**

#### **Emergency Assistance**

Low-income individuals and families received emergency assistance from the CSBG Network.

**21,660**

#### **Community Opportunities and Resources**

Community opportunities or resources were improved or expanded for low-income people as a result of CSBG Network projects or initiatives, or advocacy with other public and private agencies.

**17,444**

#### **Community Empowerment**

Community members and low-income people mobilized to engage in activities that support and promote their own well-being and that of their community as a direct result of CSBG Network initiatives through maximum feasible participation.

# 2012 CSBG HIGHLIGHTS



From the UT FY 2011 Community Services Block Grant Information System Survey

## Utah

### CSBG NETWORK PARTICIPANTS

Utah administers CSBG to  
**9 agencies in  
100% of UT counties**

**86%** of UT families served were in  
poverty, and  
**52%** of UT families served were in  
severe poverty

UT CSBG agencies provided services to  
**230,951 low-income individuals in  
78,629 families**

Vulnerable populations served by  
UT CSBG agencies included:



Nationally, CSBG agencies provided services to 18.7 million low-income individuals in 7.6 million families.

Out of the 47 million Americans in poverty, the CSBG Network served 22% nationally.

### CSBG NETWORK RESOURCES

For every \$1 of CSBG, the UT Network leveraged **\$6.23** from state, local, and private sources, including the value of volunteer hours



**\$3,428,129** CSBG dollars supported the core activities of the UT CSBG Network

The UT CSBG Network's funding totaled **\$60,485,899**

Including all federal sources, the UT CSBG Network leveraged **\$20.35 per \$1** of CSBG



# 2012 CSBG HIGHLIGHTS



From the UT FY 2011 Community Services Block Grant Information System Survey

## CSBG PERFORMANCE OUTCOMES FOR UTAH

The UT CSBG Network addressed 869,540 conditions of poverty that create barriers to economic security.

### Barriers Addressed

These barriers were measured by:

**319,750**

#### **Employment or Work Supports**

Low-income participants in CSBG Network employment initiatives obtained supports which reduced or eliminated barriers to initial or continuous employment, acquired a job, obtained an increase in employment income, or achieved “living wage” employment and benefits.

**9,163**

#### **Economic Asset Enhancement and Utilization**

Low-income households achieved an increase in financial assets or financial skills as a result of CSBG Network assistance.

**16,529**

#### **Child and Family Development**

Infants, children, youth, parents, and other adults participated in developmental or enrichment programs facilitated by the CSBG Network and achieved program goals.

**5,062**

#### **Independent Living for Low-Income Vulnerable Populations**

Low-income vulnerable individuals received services from the CSBG Network and secured or maintained an independent living situation as a result.

**36,746**

#### **Family Stability**

Low-income participants obtained supports which reduced or eliminated barriers to family stability through assistance from the CSBG Network.

**469,254**

#### **Emergency Assistance**

Low-income individuals and families received emergency assistance from the CSBG Network.

**4,056**

#### **Community Opportunities and Resources**

Community opportunities or resources were improved or expanded for low-income people as a result of CSBG Network projects or initiatives, or advocacy with other public and private agencies.

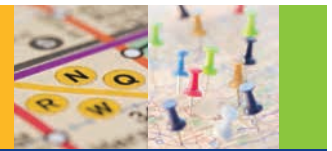
**8,980**

#### **Community Empowerment**

Community members and low-income people mobilized to engage in activities that support and promote their own well-being and that of their community as a direct result of CSBG Network initiatives through maximum feasible participation.



# 2012 CSBG HIGHLIGHTS



From the VT FY 2011 Community Services Block Grant Information System Survey

## Vermont

### CSBG NETWORK PARTICIPANTS

Vermont administers CSBG to  
**5 agencies in  
100% of VT counties**

**67%** of VT families served were in  
poverty, and  
**35%** of VT families served were in  
severe poverty

VT CSBG agencies provided services to  
**63,405 low-income individuals in  
30,580 families**

Vulnerable populations served by  
VT CSBG agencies included:



Nationally, CSBG agencies provided services to 18.7 million low-income individuals in 7.6 million families.

Out of the 47 million Americans in poverty, the CSBG Network served 22% nationally.

### CSBG NETWORK RESOURCES

For every \$1 of CSBG, the VT Network leveraged  
**\$6.95** from state, local, and private sources,  
including the value of volunteer hours



**\$3,507,970** CSBG dollars  
supported the core activities of  
the VT CSBG Network

The VT CSBG Network's funding  
totaled **\$57,832,190**

Including all federal sources, the  
VT CSBG Network leveraged  
**\$16.40 per \$1** of CSBG

# 2012 CSBG HIGHLIGHTS



From the VT FY 2011 Community Services Block Grant Information System Survey

## CSBG PERFORMANCE OUTCOMES FOR VERMONT

The VT CSBG Network addressed 120,608 conditions of poverty that create barriers to economic security.

### Barriers Addressed

These barriers were measured by:

**4,538**

#### **Employment or Work Supports**

Low-income participants in CSBG Network employment initiatives obtained supports which reduced or eliminated barriers to initial or continuous employment, acquired a job, obtained an increase in employment income, or achieved “living wage” employment and benefits.

**4,626**

#### **Economic Asset Enhancement and Utilization**

Low-income households achieved an increase in financial assets or financial skills as a result of CSBG Network assistance.

**3,868**

#### **Child and Family Development**

Infants, children, youth, parents, and other adults participated in developmental or enrichment programs facilitated by the CSBG Network and achieved program goals.

**10,461**

#### **Independent Living for Low-Income Vulnerable Populations**

Low-income vulnerable individuals received services from the CSBG Network and secured or maintained an independent living situation as a result.

**4,620**

#### **Family Stability**

Low-income participants obtained supports which reduced or eliminated barriers to family stability through assistance from the CSBG Network.

**90,544**

#### **Emergency Assistance**

Low-income individuals and families received emergency assistance from the CSBG Network.

**1,576**

#### **Community Opportunities and Resources**

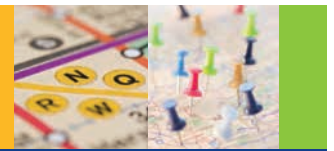
Community opportunities or resources were improved or expanded for low-income people as a result of CSBG Network projects or initiatives, or advocacy with other public and private agencies.

**375**

#### **Community Empowerment**

Community members and low-income people mobilized to engage in activities that support and promote their own well-being and that of their community as a direct result of CSBG Network initiatives through maximum feasible participation.

# 2012 CSBG HIGHLIGHTS



From the VA FY 2011 Community Services Block Grant Information System Survey

## Virginia

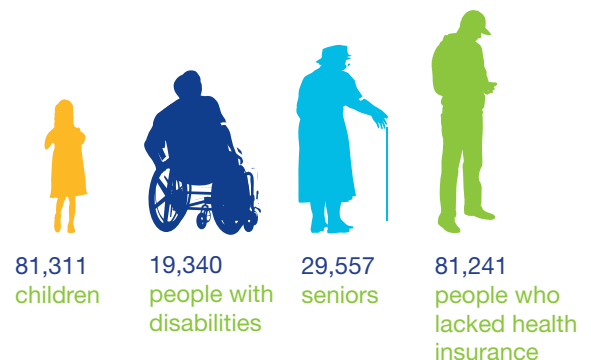
### CSBG NETWORK PARTICIPANTS

Virginia administers CSBG to  
**29 agencies in  
90% of VA counties**

**71%** of VA families served were in  
poverty, and  
**35%** of VA families served were in  
severe poverty

VA CSBG agencies provided services to  
**226,444 low-income individuals in  
99,332 families**

Vulnerable populations served by  
VA CSBG agencies included:



Nationally, CSBG agencies provided services to 18.7 million low-income individuals in 7.6 million families.

Out of the 47 million Americans in poverty, the CSBG Network served 22% nationally.

### CSBG NETWORK RESOURCES

For every \$1 of CSBG, the VA Network leveraged  
**\$4.04** from state, local, and private sources,  
including the value of volunteer hours



**\$10,831,746** CSBG dollars  
supported the core activities of  
the VA CSBG Network

The VA CSBG Network's funding  
totaled **\$156,753,063**

Including all federal sources, the  
VA CSBG Network leveraged  
**\$13.75 per \$1** of CSBG

# 2012 CSBG HIGHLIGHTS



From the VA FY 2011 Community Services Block Grant Information System Survey

## CSBG PERFORMANCE OUTCOMES FOR VIRGINIA

The VA CSBG Network addressed 213,415 conditions of poverty that create barriers to economic security.

### Barriers Addressed

These barriers were measured by:

**4,176**

#### **Employment or Work Supports**

Low-income participants in CSBG Network employment initiatives obtained supports which reduced or eliminated barriers to initial or continuous employment, acquired a job, obtained an increase in employment income, or achieved “living wage” employment and benefits.

**7,944**

#### **Economic Asset Enhancement and Utilization**

Low-income households achieved an increase in financial assets or financial skills as a result of CSBG Network assistance.

**28,840**

#### **Child and Family Development**

Infants, children, youth, parents, and other adults participated in developmental or enrichment programs facilitated by the CSBG Network and achieved program goals.

**8,115**

#### **Independent Living for Low-Income Vulnerable Populations**

Low-income vulnerable individuals received services from the CSBG Network and secured or maintained an independent living situation as a result.

**135,393**

#### **Emergency Assistance**

Low-income individuals and families received emergency assistance from the CSBG Network.

**7,467**

#### **Community Opportunities and Resources**

Community opportunities or resources were improved or expanded for low-income people as a result of CSBG Network projects or initiatives, or advocacy with other public and private agencies.

**21,480**

#### **Community Empowerment**

Community members and low-income people mobilized to engage in activities that support and promote their own well-being and that of their community as a direct result of CSBG Network initiatives through maximum feasible participation.

# 2012 CSBG HIGHLIGHTS



From the WA FY 2011 Community Services Block Grant Information System Survey

## Washington

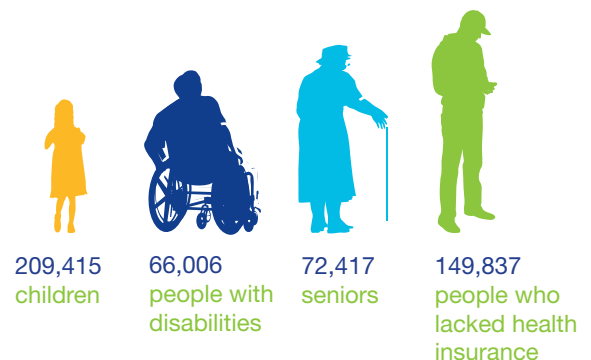
### CSBG NETWORK PARTICIPANTS

Washington administers CSBG to  
**30 agencies in  
100% of WA counties**

**79%** of WA families served were in  
poverty, and  
**36%** of WA families served were in  
severe poverty

WA CSBG agencies provided services to  
**752,070 low-income individuals in  
295,915 families**

Vulnerable populations served by  
WA CSBG agencies included:



Nationally, CSBG agencies provided services to 18.7 million low-income individuals in 7.6 million families.

Out of the 47 million Americans in poverty, the CSBG Network served 22% nationally.

### CSBG NETWORK RESOURCES

For every \$1 of CSBG, the WA Network leveraged **\$26.13** from state, local, and private sources, including the value of volunteer hours



**\$8,017,408** CSBG dollars supported the core activities of the WA CSBG Network

The WA CSBG Network's funding totaled **\$354,951,201**

Including all federal sources, the WA CSBG Network leveraged **\$51.18 per \$1** of CSBG



# 2012 CSBG HIGHLIGHTS



From the WA FY 2011 Community Services Block Grant Information System Survey

## CSBG PERFORMANCE OUTCOMES FOR WASHINGTON

The WA CSBG Network addressed 1,484,829 conditions of poverty that create barriers to economic security.

### Barriers Addressed

These barriers were measured by:

**108,244**

#### **Employment or Work Supports**

Low-income participants in CSBG Network employment initiatives obtained supports which reduced or eliminated barriers to initial or continuous employment, acquired a job, obtained an increase in employment income, or achieved “living wage” employment and benefits.

**20,488**

#### **Economic Asset Enhancement and Utilization**

Low-income households achieved an increase in financial assets or financial skills as a result of CSBG Network assistance.

**76,624**

#### **Child and Family Development**

Infants, children, youth, parents, and other adults participated in developmental or enrichment programs facilitated by the CSBG Network and achieved program goals.

**84,250**

#### **Independent Living for Low-Income Vulnerable Populations**

Low-income vulnerable individuals received services from the CSBG Network and secured or maintained an independent living situation as a result.

**71,846**

#### **Family Stability**

Low-income participants obtained supports which reduced or eliminated barriers to family stability through assistance from the CSBG Network.

**1,047,613**

#### **Emergency Assistance**

Low-income individuals and families received emergency assistance from the CSBG Network.

**37,069**

#### **Community Opportunities and Resources**

Community opportunities or resources were improved or expanded for low-income people as a result of CSBG Network projects or initiatives, or advocacy with other public and private agencies.

**38,695**

#### **Community Empowerment**

Community members and low-income people mobilized to engage in activities that support and promote their own well-being and that of their community as a direct result of CSBG Network initiatives through maximum feasible participation.



# 2012 CSBG HIGHLIGHTS



From the WV FY 2011 Community Services Block Grant Information System Survey

## West Virginia

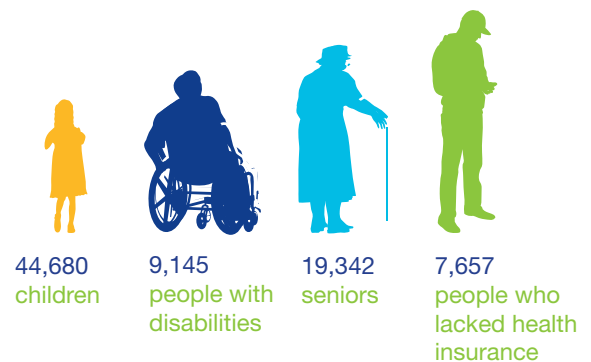
### CSBG NETWORK PARTICIPANTS

West Virginia administers CSBG to  
**16 agencies in**  
**100% of WV counties**

**71%** of WV families served were in  
poverty, and  
**43%** of WV families served were in  
severe poverty

WV CSBG agencies provided services to  
**121,587 low-income individuals in**  
**45,181 families**

Vulnerable populations served by  
WV CSBG agencies included:



Nationally, CSBG agencies provided services to 18.7 million low-income individuals in 7.6 million families.

Out of the 47 million Americans in poverty, the CSBG Network served 22% nationally.

### CSBG NETWORK RESOURCES

For every \$1 of CSBG, the WV Network leveraged  
**\$4.58** from state, local, and private sources,  
including the value of volunteer hours



**\$7,573,835** CSBG dollars  
supported the core activities of  
the WV CSBG Network

The WV CSBG Network's funding  
totaled **\$99,929,000**

Including all federal sources, the  
WV CSBG Network leveraged  
**\$14.76 per \$1** of CSBG

# 2012 CSBG HIGHLIGHTS



From the WV FY 2011 Community Services Block Grant Information System Survey

## CSBG PERFORMANCE OUTCOMES FOR WEST VIRGINIA

The WV CSBG Network addressed 179,083 conditions of poverty that create barriers to economic security.

### Barriers Addressed

These barriers were measured by:

**24,123**

#### **Employment or Work Supports**

Low-income participants in CSBG Network employment initiatives obtained supports which reduced or eliminated barriers to initial or continuous employment, acquired a job, obtained an increase in employment income, or achieved “living wage” employment and benefits.

**6,201**

#### **Economic Asset Enhancement and Utilization**

Low-income households achieved an increase in financial assets or financial skills as a result of CSBG Network assistance.

**22,006**

#### **Child and Family Development**

Infants, children, youth, parents, and other adults participated in developmental or enrichment programs facilitated by the CSBG Network and achieved program goals.

**3,537**

#### **Independent Living for Low-Income Vulnerable Populations**

Low-income vulnerable individuals received services from the CSBG Network and secured or maintained an independent living situation as a result.

**3,837**

#### **Family Stability**

Low-income participants obtained supports which reduced or eliminated barriers to family stability through assistance from the CSBG Network.

**12,222**

#### **Emergency Assistance**

Low-income individuals and families received emergency assistance from the CSBG Network.

**101,525**

#### **Community Opportunities and Resources**

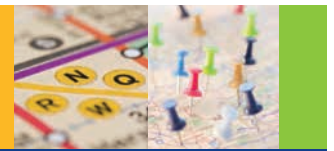
Community opportunities or resources were improved or expanded for low-income people as a result of CSBG Network projects or initiatives, or advocacy with other public and private agencies.

**5,632**

#### **Community Empowerment**

Community members and low-income people mobilized to engage in activities that support and promote their own well-being and that of their community as a direct result of CSBG Network initiatives through maximum feasible participation.

# 2012 CSBG HIGHLIGHTS



From the WI FY 2011 Community Services Block Grant Information System Survey

## Wisconsin

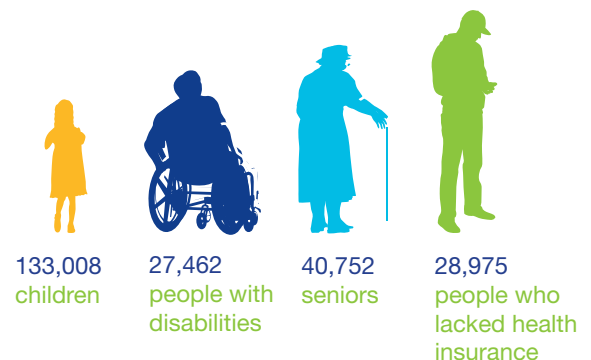
### CSBG NETWORK PARTICIPANTS

Wisconsin administers CSBG to  
**17 agencies in  
96% of WI counties**

**60%** of WI families served were in  
poverty, and  
**31%** of WI families served were in  
severe poverty

WI CSBG agencies provided services to  
**367,670 low-income individuals in  
211,241 families**

Vulnerable populations served by  
WI CSBG agencies included:



Nationally, CSBG agencies provided services to 18.7 million low-income individuals in 7.6 million families.

Out of the 47 million Americans in poverty, the CSBG Network served 22% nationally.

### CSBG NETWORK RESOURCES

For every \$1 of CSBG, the WI Network leveraged  
**\$9.53** from state, local, and private sources,  
including the value of volunteer hours



**\$8,231,869** CSBG dollars  
supported the core activities of  
the WI CSBG Network

The WI CSBG Network's funding  
totaled **\$224,201,968**

Including all federal sources, the  
WI CSBG Network leveraged  
**\$29.04 per \$1** of CSBG

# 2012 CSBG HIGHLIGHTS



From the WI FY 2011 Community Services Block Grant Information System Survey

## CSBG PERFORMANCE OUTCOMES FOR WISCONSIN

The WI CSBG Network addressed 768,474 conditions of poverty that create barriers to economic security.

### Barriers Addressed

These barriers were measured by:

**230,522**

#### **Employment or Work Supports**

Low-income participants in CSBG Network employment initiatives obtained supports which reduced or eliminated barriers to initial or continuous employment, acquired a job, obtained an increase in employment income, or achieved “living wage” employment and benefits.

**13,637**

#### **Economic Asset Enhancement and Utilization**

Low-income households achieved an increase in financial assets or financial skills as a result of CSBG Network assistance.

**70,531**

#### **Child and Family Development**

Infants, children, youth, parents, and other adults participated in developmental or enrichment programs facilitated by the CSBG Network and achieved program goals.

**46,872**

#### **Independent Living for Low-Income Vulnerable Populations**

Low-income vulnerable individuals received services from the CSBG Network and secured or maintained an independent living situation as a result.

**41,532**

#### **Family Stability**

Low-income participants obtained supports which reduced or eliminated barriers to family stability through assistance from the CSBG Network.

**331,028**

#### **Emergency Assistance**

Low-income individuals and families received emergency assistance from the CSBG Network.

**17,532**

#### **Community Opportunities and Resources**

Community opportunities or resources were improved or expanded for low-income people as a result of CSBG Network projects or initiatives, or advocacy with other public and private agencies.

**16,820**

#### **Community Empowerment**

Community members and low-income people mobilized to engage in activities that support and promote their own well-being and that of their community as a direct result of CSBG Network initiatives through maximum feasible participation.

# 2012 CSBG HIGHLIGHTS



From the WY FY 2011 Community Services Block Grant Information System Survey

## Wyoming

### CSBG NETWORK PARTICIPANTS

Wyoming administers CSBG to  
**18 agencies in**  
**100% of WY counties**

**80%** of WY families served were in  
poverty, and  
**34%** of WY families served were in  
severe poverty

WY CSBG agencies provided services to  
**56,565 low-income individuals in**  
**24,364 families**

Vulnerable populations served by  
WY CSBG agencies included:



Nationally, CSBG agencies provided services to 18.7 million low-income individuals in 7.6 million families.

Out of the 47 million Americans in poverty, the CSBG Network served 22% nationally.

### CSBG NETWORK RESOURCES

For every \$1 of CSBG, the WY Network leveraged  
**\$19.13** from state, local, and private sources,  
including the value of volunteer hours



**\$3,507,970** CSBG dollars  
supported the core activities of  
the WY CSBG Network

The WY CSBG Network's funding  
totaled **\$93,509,162**

Including all federal sources, the  
WY CSBG Network leveraged  
**\$31.26 per \$1** of CSBG



# 2012 CSBG HIGHLIGHTS



From the WY FY 2011 Community Services Block Grant Information System Survey

## CSBG PERFORMANCE OUTCOMES FOR WYOMING

The WY CSBG Network addressed 145,701 conditions of poverty that create barriers to economic security.

### Barriers Addressed

These barriers were measured by:

**21,881**

#### **Employment or Work Supports**

Low-income participants in CSBG Network employment initiatives obtained supports which reduced or eliminated barriers to initial or continuous employment, acquired a job, obtained an increase in employment income, or achieved "living wage" employment and benefits.

**554**

#### **Economic Asset Enhancement and Utilization**

Low-income households achieved an increase in financial assets or financial skills as a result of CSBG Network assistance.

**8,808**

#### **Child and Family Development**

Infants, children, youth, parents, and other adults participated in developmental or enrichment programs facilitated by the CSBG Network and achieved program goals.

**8,893**

#### **Independent Living for Low-Income Vulnerable Populations**

Low-income vulnerable individuals received services from the CSBG Network and secured or maintained an independent living situation as a result.

**17,614**

#### **Family Stability**

Low-income participants obtained supports which reduced or eliminated barriers to family stability through assistance from the CSBG Network.

**83,111**

#### **Emergency Assistance**

Low-income individuals and families received emergency assistance from the CSBG Network.

**2,672**

#### **Community Opportunities and Resources**

Community opportunities or resources were improved or expanded for low-income people as a result of CSBG Network projects or initiatives, or advocacy with other public and private agencies.

**2,168**

#### **Community Empowerment**

Community members and low-income people mobilized to engage in activities that support and promote their own well-being and that of their community as a direct result of CSBG Network initiatives through maximum feasible participation.