

2014 STATE CSBG FACTSHEETS



From the RI FFY 2013 Community Services Block Grant Information System Survey

Rhode Island

CSBG NETWORK PARTICIPANTS

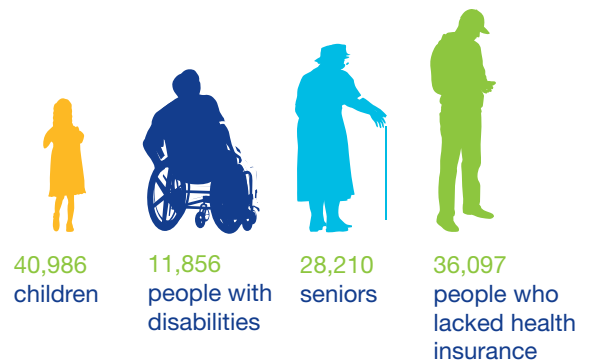
Rhode Island administers CSBG to
8 agencies in
100% of RI counties

57% of RI families served were in
poverty, below 100% of the Federal
Poverty Guidelines

35% of RI families served were in
severe poverty, below 50% of the
Federal Poverty Guidelines

The CSBG Network provided services to
**135,094 low-income individuals in
68,311 families in Rhode Island.**

Vulnerable populations served included:



Nationally, 1,040 agencies receiving CSBG funding provided services to 15.7 million low-income individuals in 6.7 million families.

Of the 6.7 million families nationwide, 70% of those families were living in poverty, below 100% of the Federal Poverty Guidelines.

CSBG NETWORK RESOURCES

For every \$1 of CSBG, the RI Network leveraged
\$10.17 from state, local, and private sources,
including the value of volunteer hours*



\$3,366,006 CSBG funds were
allocated in support of the RI
CSBG Network

The RI Network's non-CSBG
funding totaled **\$85,051,608**

Including all federal sources and
volunteer hours, the RI CSBG
Network leveraged
26.06 per \$1 of CSBG

*Value of Volunteer Hours calculated using federal minimum wage, except in those states with a higher minimum wage.

2014 STATE CSBG FACTSHEETS



From the RI FFY 2013 Community Services Block Grant Information System Survey

CSBG PERFORMANCE OUTCOMES FOR RHODE ISLAND

Below is a subset of the RI Network's 273,655 outcomes, including indicators of movement toward self-sufficiency and community revitalization.

Outcomes Include:

66,702 Employment or Work Supports

Low-income participants in CSBG Network employment initiatives obtained supports which reduced or eliminated barriers to initial or continuous employment, acquired a job, obtained an increase in employment income, or achieved "living wage" employment and benefits.

12,409 Economic Asset Enhancement and Utilization

Low-income households achieved an increase in financial assets or financial skills as a result of CSBG Network assistance.

34,251 Child and Family Development

Infants, children, youth, parents, and other adults participated in developmental or enrichment programs facilitated by the CSBG Network and achieved program goals.

26,569 Independent Living for Low-Income Vulnerable Populations

Low-income vulnerable individuals received services from the CSBG Network and secured or maintained an independent living situation as a result.

65,068 Family Stability

Low-income participants obtained supports which reduced or eliminated barriers to family stability through assistance from the CSBG Network.

58,647 Emergency Assistance

Low-income individuals and families received emergency assistance from the CSBG Network.

7,718 Community Opportunities and Resources

Community opportunities or resources were improved or expanded for low-income people as a result of CSBG Network projects or initiatives, or advocacy with other public and private agencies.

2,291 Community Empowerment

Community members and low-income people mobilized to engage in activities that support and promote their own well-being and that of their community as a direct result of CSBG Network initiatives through maximum feasible participation.