

2014 STATE CSBG FACTSHEETS



From the MD FFY 2013 Community Services Block Grant Information System Survey

Maryland

CSBG NETWORK PARTICIPANTS

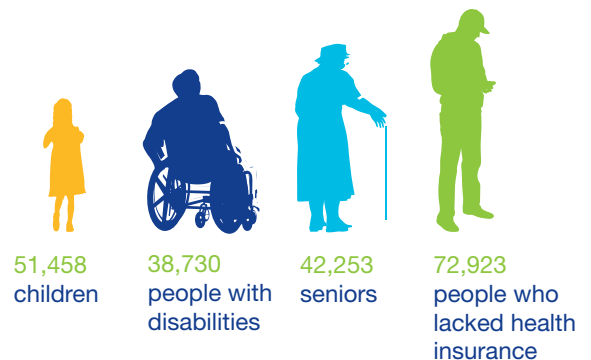
Maryland administers CSBG to
18 agencies in
100% of MD counties

69% of MD families served were in
poverty, below 100% of the Federal
Poverty Guidelines

37% of MD families served were in
severe poverty, below 50% of the
Federal Poverty Guidelines

The CSBG Network provided services to
**319,316 low-income individuals in
138,355 families in Maryland.**

Vulnerable populations served included:



Nationally, 1,040 agencies receiving CSBG funding provided services to 15.7 million low-income individuals in 6.7 million families.

Of the 6.7 million families nationwide, 70% of those families were living in poverty, below 100% of the Federal Poverty Guidelines.

CSBG NETWORK RESOURCES

For every \$1 of CSBG, the MD Network leveraged
\$8.53 from state, local, and private sources,
including the value of volunteer hours*



\$8,217,760 CSBG funds were
allocated in support of the MD
CSBG Network

The MD Network's non-CSBG
funding totaled **\$187,209,264**

Including all federal sources and
volunteer hours, the MD CSBG
Network leveraged
24.17 per \$1 of CSBG

*Value of Volunteer Hours calculated using federal minimum wage, except in those states with a higher minimum wage.

2014 STATE CSBG FACTSHEETS



From the MD FFY 2013 Community Services Block Grant Information System Survey

CSBG PERFORMANCE OUTCOMES FOR MARYLAND

Below is a subset of the MD Network's 881,702 outcomes, including indicators of movement toward self-sufficiency and community revitalization.

Outcomes Include:

180,194 **Employment or Work Supports**

Low-income participants in CSBG Network employment initiatives obtained supports which reduced or eliminated barriers to initial or continuous employment, acquired a job, obtained an increase in employment income, or achieved "living wage" employment and benefits.

31,809 **Economic Asset Enhancement and Utilization**

Low-income households achieved an increase in financial assets or financial skills as a result of CSBG Network assistance.

27,838 **Child and Family Development**

Infants, children, youth, parents, and other adults participated in developmental or enrichment programs facilitated by the CSBG Network and achieved program goals.

39,950 **Independent Living for Low-Income Vulnerable Populations**

Low-income vulnerable individuals received services from the CSBG Network and secured or maintained an independent living situation as a result.

339,151 **Family Stability**

Low-income participants obtained supports which reduced or eliminated barriers to family stability through assistance from the CSBG Network.

222,287 **Emergency Assistance**

Low-income individuals and families received emergency assistance from the CSBG Network.

27,586 **Community Opportunities and Resources**

Community opportunities or resources were improved or expanded for low-income people as a result of CSBG Network projects or initiatives, or advocacy with other public and private agencies.

12,887 **Community Empowerment**

Community members and low-income people mobilized to engage in activities that support and promote their own well-being and that of their community as a direct result of CSBG Network initiatives through maximum feasible participation.