

2014 STATE CSBG FACTSHEETS



From the DE FFY 2013 Community Services Block Grant Information System Survey

Delaware

CSBG NETWORK PARTICIPANTS

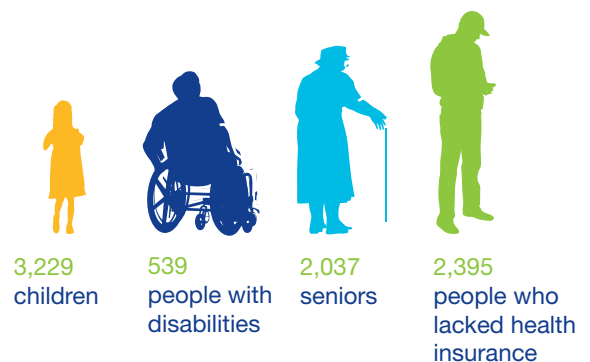
Delaware administers CSBG to
1 agencies in
100% of DE counties

58% of DE families served were in poverty, below 100% of the Federal Poverty Guidelines

36% of DE families served were in severe poverty, below 50% of the Federal Poverty Guidelines

The CSBG Network provided services to **12,629 low-income individuals** in **7,465 families** in Delaware.

Vulnerable populations served included:



Nationally, 1,040 agencies receiving CSBG funding provided services to 15.7 million low-income individuals in 6.7 million families.

Of the 6.7 million families nationwide, 70% of those families were living in poverty, below 100% of the Federal Poverty Guidelines.

CSBG NETWORK RESOURCES

For every \$1 of CSBG, the DE Network leveraged **\$0.26** from state and private sources, including the value of volunteer hours*



\$3,175,841 CSBG funds were allocated in support of the DE CSBG Network

The DE Network's non-CSBG funding totaled **\$4,362,261**

Including all federal sources and volunteer hours, the DE CSBG Network leveraged **1.39** per \$1 of CSBG

*Value of Volunteer Hours calculated using federal minimum wage, except in those states with a higher minimum wage.

2014 STATE CSBG FACTSHEETS



From the DE FFY 2013 Community Services Block Grant Information System Survey

CSBG PERFORMANCE OUTCOMES FOR DELAWARE

Below is a subset of the DE Network's 17,057 outcomes, including indicators of movement toward self-sufficiency and community revitalization.

Outcomes Include:

2,677 Employment or Work Supports

Low-income participants in CSBG Network employment initiatives obtained supports which reduced or eliminated barriers to initial or continuous employment, acquired a job, obtained an increase in employment income, or achieved "living wage" employment and benefits.

3,201 Economic Asset Enhancement and Utilization

Low-income households achieved an increase in financial assets or financial skills as a result of CSBG Network assistance.

2,743 Child and Family Development

Infants, children, youth, parents, and other adults participated in developmental or enrichment programs facilitated by the CSBG Network and achieved program goals.

984 Independent Living for Low-Income Vulnerable Populations

Low-income vulnerable individuals received services from the CSBG Network and secured or maintained an independent living situation as a result.

644 Family Stability

Low-income participants obtained supports which reduced or eliminated barriers to family stability through assistance from the CSBG Network.

4,869 Emergency Assistance

Low-income individuals and families received emergency assistance from the CSBG Network.

693 Community Opportunities and Resources

Community opportunities or resources were improved or expanded for low-income people as a result of CSBG Network projects or initiatives, or advocacy with other public and private agencies.

1,246 Community Empowerment

Community members and low-income people mobilized to engage in activities that support and promote their own well-being and that of their community as a direct result of CSBG Network initiatives through maximum feasible participation.